

# ATM Monoclonal Antibody (2C1)

Product Details	
Size	100 µl
Species Reactivity	Human, Mouse, Non-human primate, Rat
Published Species	Human
Host/Isotope	Mouse / IgG1
Class	Monoclonal
Type	Antibody
Clone	2C1
Conjugate	Unconjugated
Immunogen	Recombinant protein expressed in E. coli corresponding to amino acids 2577-3056.
Form	Liquid
Concentration	1 mg/mL
Purification	Affinity chromatography
Storage buffer	PBS, pH 7.4
Contains	no preservative
Storage Conditions	Store at 4°C short term. For long term storage, store at -20°C, avoiding freeze/thaw cycles.
RRID	AB_557657

Applications	Tested	Dilution	Published
Immunocytochemistry (ICC)	✓	Assay Dependent	1 Publication
Western Blot (WB)	✓	1:500-1:3000	1 Publication
ChIP assay (ChIP)	✓	Assay Dependent	
ELISA (ELISA)	✓	Assay Dependent	
Flow Cytometry (Flow)	✓	Assay Dependent	
Immunofluorescence (IF)	✓	Assay dependent	
Immunohistochemistry (Paraffin) (IHC (P))	✓	5 ug/ml	
Immunoprecipitation (IP)	✓	1-10 ug/ml	

## Product Specific Information

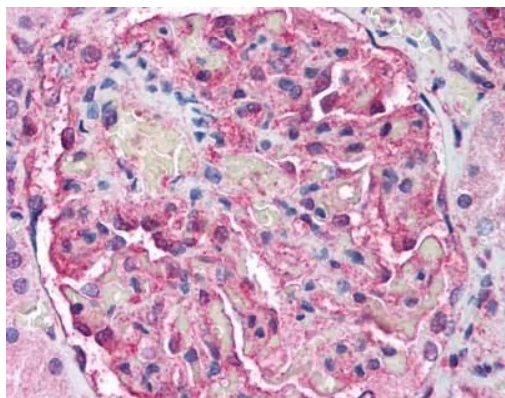
MA1-23152 detects ATM in human, rat, mouse and monkey samples.

MA1-23152 has been successfully used in ChIP Assay, ELISA, FACS, immunocytochemistry, immunofluorescence, immunohistochemistry (paraffin), immunoprecipitation and Western blot procedures. Predicted molecular weight of MA1-23152 is ~350kDa.

MA1-23152 immunogen corresponds to recombinant protein expressed in E. coli corresponding to amino acids 2577-3056.

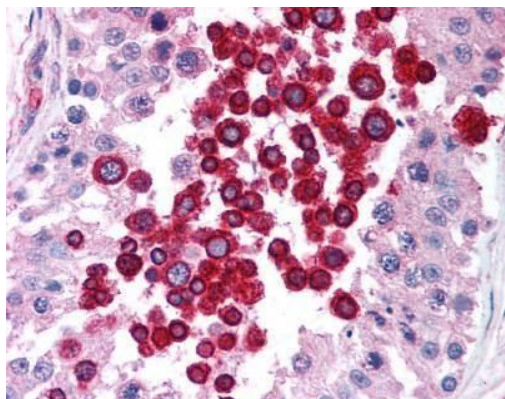
Store product as a concentrated solution. Centrifuge briefly prior to opening the vial. For short-term storage (1-2 weeks), product can be stored at 4°C. For long-term storage, aliquot and store product at -20° C or below, avoiding multiple freeze-thaw cycles.

## Product Images For ATM Monoclonal Antibody (2C1)



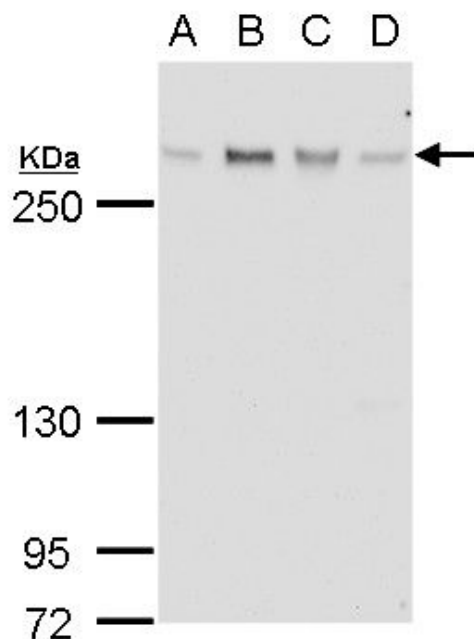
### ATM Antibody (MA1-23152) in IHC (P)

Immunohistochemical analysis of ATM in formalin-fixed, paraffin-embedded human kidney tissue using an ATM monoclonal antibody (Product # MA1-23152) at a dilution of 5 µg/mL followed by biotinylated anti-mouse IgG secondary antibody, alkaline phosphatase-streptavidin and chromogen.



### ATM Antibody (MA1-23152) in IHC (P)

Immunohistochemical analysis of ATM in formalin-fixed, paraffin-embedded human testis tissue using an ATM monoclonal antibody (Product # MA1-23152).



### ATM Antibody (MA1-23152) in WB

Western blot analysis of ATM using A) 30 µg U87-MG whole cell lysate (B) 30 µg SK-N-SH whole cell lysate (C) 30 µg IMR32 whole cell lysate and D) 30 µg SK-N-AS whole cell lysate. Samples were loaded onto a 5% SDS-PAGE gel and probed with an ATM monoclonal antibody (Product # MA1-23152) at a dilution of 1:1000.

## 2 References

### Immunocytochemistry (1)

Archives of oral biology

#### Repair genes expression profile of MLH1, MSH2 and ATM in the normal oral mucosa of chronic smokers.

"MA123152 was used in immunocytochemistry to determine the effect of chronic smoking on repair gene expression in the normal oral mucosa of chronic smokers and never smokers"

Authors: Alves MG, Carta CF, de Barros PP, Issa JS, Nunes FD, Almeida JD

**Species**  
Human

**Dilution**  
1:100

**Year**  
2017

### Western Blot (1)

Human molecular genetics

#### A novel porcine model of ataxia telangiectasia reproduces neurological features and motor deficits of human disease.

"Published figure using ATM monoclonal antibody (Product # MA1-23152) in Western Blot"

Authors: Beraldi R, Chan CH, Rogers CS, Kovács AD, Meyerholz DK, Trantzas C, Lambertz AM, Darbro BW, Weber KL, White KA, Rheedens RV, Kruer MC, Dacken BA, Wang XJ, Davis BT, Rohret JA, Struzynski JT, Rohret FA, Weimer JM, Pearce DA

**Species**  
Not Applicable

**Dilution**  
Not Cited

**Year**  
2015

For Research Use Only. Not for use in diagnostic procedures. Not for resale without express authorization. Products are warranted to operate or perform substantially in conformance with published Product specifications in effect at the time of sale, as set forth in the Production documentation, specifications and/or accompanying package inserts ("Documentation"). No claim of suitability for use in applications regulated by FDA is made. The warranty provided herein is valid only when used by properly trained individuals. Unless otherwise stated in the Documentation, this warranty is limited to one year from date of shipment when the Product is subjected to normal, proper and intended usage. This warranty does not extend to anyone other than the Buyer. Any model or sample furnished to Buyer is merely illustrative of the general type and quality of goods and does not represent that any Product will conform to such model or sample. NO OTHER WARRANTIES, EXPRESS OR IMPLIED, ARE GRANTED INCLUDING WITHOUT LIMITATION, IMPLIED WARRANTIES OF MERCHANTABILITY, FITNESS FOR ANY PARTICULAR PURPOSE, OR NON INFRINGEMENT. BUYER'S EXCLUSIVE REMEDY FOR NON-CONFORMING PRODUCTS DURING THE WARRANTY PERIOD IS LIMITED TO REPAIR, REPLACEMENT OF OR REFUND FOR THE NON-CONFORMING PRODUCT(S) AT SELLER'S SOLE OPTION. THERE IS NO OBLIGATION TO REPAIR, REPLACE OR REFUND FOR PRODUCTS AS THE RESULT OF (I) ACCIDENT, DISASTER OR EVENT OF FORCE MAJEURE, (II) MISUSE, FAULT OR NEGLIGENCE OF OR BY BUYER, (III) USE OF THE PRODUCTS IN A MANNER FOR WHICH THEY WERE NOT DESIGNED, OR (IV) IMPROPER STORAGE AND HANDLING OF THE PRODUCTS. Unless otherwise expressly stated on the Product or in the documentation accompanying the Product, the Product is intended for research only and is not to be used for any other purpose, including without limitation, unauthorized commercial uses, in vitro diagnostic uses, ex vivo or in vivo therapeutic uses, or any type of consumption by or application to human or animals.