

Estrogen Receptor beta Monoclonal Antibody (14C8)

Product Details	
Size	100 µg
Species Reactivity	Human, Mouse
Published Species	Non-human primate, Human
Host/Isotope	Mouse / IgG2b
Class	Monoclonal
Type	Antibody
Clone	14C8
Conjugate	Unconjugated
Immunogen	Recombinant protein corresponding to residues 1-153 of human ER beta, expressed in E. coli.
Form	Liquid
Concentration	1.23 mg/mL
Purification	Protein G
Storage buffer	PBS, pH 7.4
Contains	no preservative
Storage Conditions	Store at 4°C short term. For long term storage, store at -20°C, avoiding freeze/thaw cycles.
RRID	AB_558839

Applications	Tested	Dilution	Published
Immunohistochemistry (Paraffin) (IHC (P))	✓	1-5 µg/mL	1 Publication
Western Blot (WB)	✓	1-5 µg/mL	1 Publication
ChIP assay (ChIP)	✓	Assay dependent	
Flow Cytometry (Flow)	✓	Assay dependent	
Immunocytochemistry (ICC)	✓	Assay dependent	
Immunofluorescence (IF)	✓	Assay dependent	

Product Specific Information

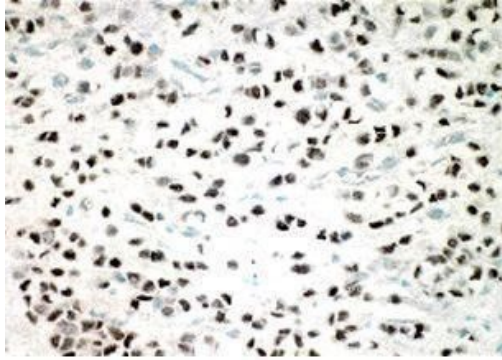
MA1-23217 detects estrogen receptor beta in human and mouse samples.

MA1-23217 has been successfully used in ChIP, FACS, immunofluorescence, immunocytochemistry, immunohistochemistry (paraffin) and Western blot procedures. For immunostaining, strong ER beta staining in epithelial cell nuclei is observed, with weak to moderate staining seen in surrounding stromal and endothelial cell nuclei, and sporadic light cytoplasmic staining. It has also been reported that this antibody has been used to detect ERβ in colon and ovarian tumors. Positive control of recombinant fusion protein.

The MA1-23217 immunogen is a recombinant protein corresponding to residues 1-153 of human ER beta, expressed in E. coli.

Store at 4°C short term. For long term storage, store at -20°C, avoiding freeze/thaw cycles.

Product Images For Estrogen Receptor beta Monoclonal Antibody (14C8)



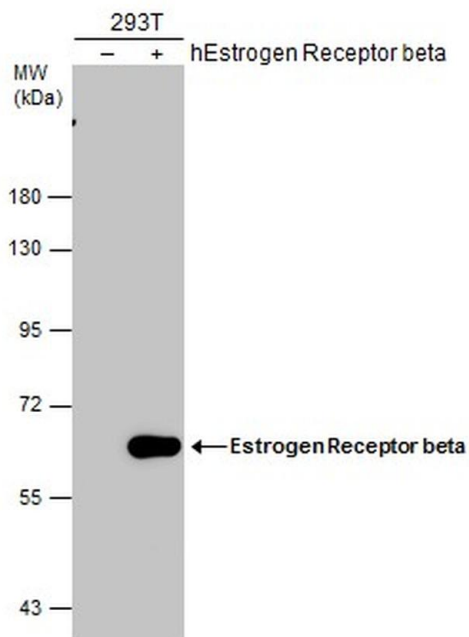
B. Infiltrating lobular carcinoma of the breast.

Estrogen Receptor beta Antibody (MA1-23217) in IHC

Immunohistochemical analysis of Estrogen Receptor beta in lobular carcinoma of the breast using an Estrogen Receptor beta monoclonal antibody (Product # MA1-23217).

Estrogen Receptor beta Antibody (MA1-23217) in WB

Western blot analysis of hEstrogen Receptor beta in Non-transfected (-) and transfected (+) 293T whole cell extracts (30 µg). Samples were separated by 7.5% SDS-PAGE and the membrane was probed with Estrogen Receptor beta Monoclonal antibody (Product # MA1-23217) at a dilution of 1:5000.



2 References

Immunohistochemistry (Paraffin) (1)

Cancer prevention research (Philadelphia, Pa.)

Effects of Pubertal Exposure to Dietary Soy on Estrogen Receptor Activity in the Breast of Cynomolgus Macaques.

"MA1-23217 was used in immunohistochemistry - paraffin section to assess mammary gland responses in pubertal female cynomolgus macaques fed diets containing either casein/lactalbumin or soy protein over time"

Authors: Dewi FN, Wood CE, Willson CJ, Register TC, Lees CJ, Howard TD, Huang Z, Murphy SK, Tooze JA, Chou JW, Miller LD, Cline JM

Species
Non-human primate

Dilution
1:40

Year
2016

Western Blot (1)

Molecular endocrinology (Baltimore, Md.)

Estradiol stimulates transcription of nuclear respiratory factor-1 and increases mitochondrial biogenesis.

"MA1-23217 was used in western blot to study the transcriptional regulation of nuclear respiratory factor-1 by estradiol."

Authors: Mattingly KA, Ivanova MM, Riggs KA, Wickramasinghe NS, Barch MJ, Klinge CM

Species
Human

Dilution
Not Cited

Year
2008

For Research Use Only. Not for use in diagnostic procedures. Not for resale without express authorization. Products are warranted to operate or perform substantially in conformance with published Product specifications in effect at the time of sale, as set forth in the Production documentation, specifications and/or accompanying package inserts ("Documentation"). No claim of suitability for use in applications regulated by FDA is made. The warranty provided herein is valid only when used by properly trained individuals. Unless otherwise stated in the Documentation, this warranty is limited to one year from date of shipment when the Product is subjected to normal, proper and intended usage. This warranty does not extend to anyone other than the Buyer. Any model or sample furnished to Buyer is merely illustrative of the general type and quality of goods and does not represent that any Product will conform to such model or sample. NO OTHER WARRANTIES, EXPRESS OR IMPLIED, ARE GRANTED INCLUDING WITHOUT LIMITATION, IMPLIED WARRANTIES OF MERCHANTABILITY, FITNESS FOR ANY PARTICULAR PURPOSE, OR NON-INFRINGEMENT. BUYER'S EXCLUSIVE REMEDY FOR NON-CONFORMING PRODUCTS DURING THE WARRANTY PERIOD IS LIMITED TO REPAIR, REPLACEMENT OF OR REFUND FOR THE NON-CONFORMING PRODUCT(S) AT SELLER'S SOLE OPTION. THERE IS NO OBLIGATION TO REPAIR, REPLACE OR REFUND FOR PRODUCTS AS THE RESULT OF (I) ACCIDENT, DISASTER OR EVENT OF FORCE MAJEURE, (II) MISUSE, FAULT OR NEGLIGENCE OF OR BY BUYER, (III) USE OF THE PRODUCTS IN A MANNER FOR WHICH THEY WERE NOT DESIGNED, OR (IV) IMPROPER STORAGE AND HANDLING OF THE PRODUCTS. Unless otherwise expressly stated on the Product or in the documentation accompanying the Product, the Product is intended for research only and is not to be used for any other purpose, including without limitation, unauthorized commercial uses, in vitro diagnostic uses, ex vivo or in vivo therapeutic uses, or any type of consumption by or application to human or animals.