

Tyrosine Hydroxylase Monoclonal Antibody (185)

Product Details	
Size	50 µL
Species Reactivity	Human, Mouse, Rat
Published Species	Rat, Human
Host/Isotope	Mouse / IgG2a
Class	Monoclonal
Type	Antibody
Clone	185
Conjugate	Unconjugated
Immunogen	Recombinant protein corresponding to the C-terminal portion of mouse Tyrosine Hydroxylase.
Form	Liquid
Storage buffer	tissue culture supernatant
Contains	15mM sodium azide
Storage Conditions	Store at 4°C short term. For long term storage, store at -20°C, avoiding freeze/thaw cycles.
RRID	AB_795666

Applications	Tested	Dilution	Published
Immunohistochemistry (IHC)	-	1:400	5 Publications
Immunocytochemistry (ICC)	✓	Assay Dependent	
Immunofluorescence (IF)	✓	Assay Dependent	
Immunohistochemistry (Frozen) (IHC (F))	✓	1:20-1:40	
Western Blot (WB)	✓	1:25-1:50	

Product Specific Information

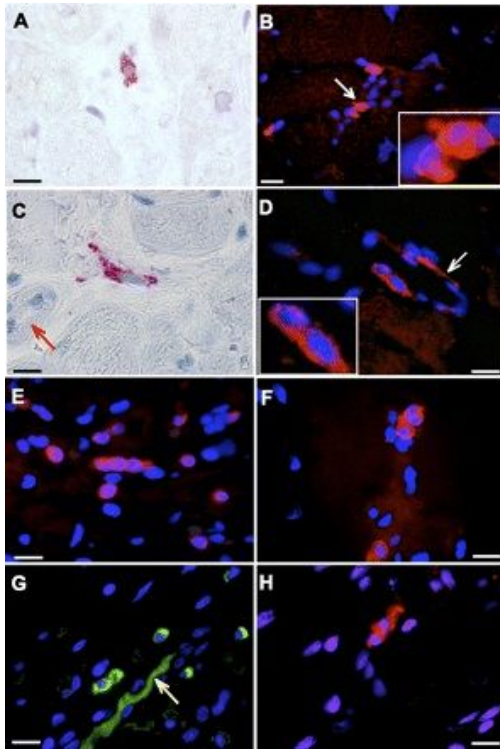
MA1-24654 detects Tyrosine Hydroxylase from human, mouse, and rat samples.

MA1-24654 has been successfully used in Western blot, ICC/IF, and immunohistochemistry (frozen sections) procedures.

The MA1-24654 immunogen is recombinant protein corresponding to the C-terminal portion of mouse Tyrosine Hydroxylase.

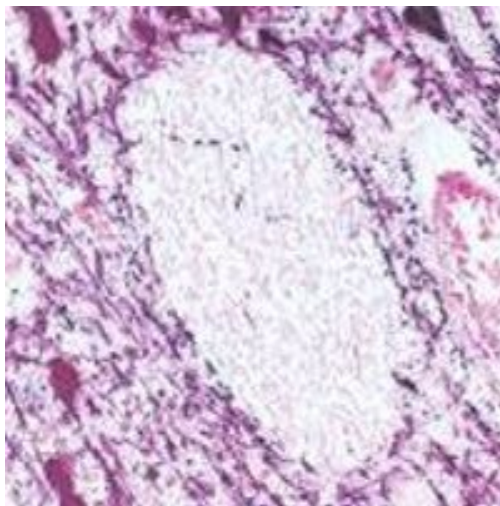
Store product as a concentrated solution. Centrifuge briefly prior to opening the vial. For short-term storage (1-2 weeks), product can be stored at 4°C. For long-term storage, aliquot and store product at -20° C or below, avoiding multiple freeze-thaw cycles.

Product Images For Tyrosine Hydroxylase Monoclonal Antibody (185)



Tyrosine Hydroxylase Antibody (MA1-24654) in IF

Immunofluorescent analysis of Tyrosine Hydroxylase using a Tyrosine Hydroxylase monoclonal antibody (Product # MA1-24654). Immunoperoxidase (A and C) and immunofluorescent (B, D-H) labeling of intrinsic cardiac adrenergic (ICA) cells in human hearts are shown. ICA cells expressing tyrosine hydroxylase (TH) immunoreactivity (red) are distributed diffusely throughout the left ventricular (LV) myocardium. Perivascular location is a frequent feature of ICA cells. C, arrow: terminal arteriole. E: abundant ICA cells in the smooth muscle layers of epicardial circumflex coronary artery. TH-expressing sympathetic nerve fibers (D and G, arrows) can occasionally be seen in the field. B and D, insets: magnified ICA cell images (arrows). TH immunoreactivity (green) was identified in ICA cells and sympathetic nerve fibers in the sinoatrial nodal tissue (G). ICA cells are seen in transplanted human LV tissue (H). Scale bars = 10 μ m, except in B (20 μ m).



Tyrosine Hydroxylase Antibody (MA1-24654) in IHC

Immunohistochemical analysis of Tyrosine Hydroxylase in human mid-brain using a Tyrosine Hydroxylase monoclonal antibody (Product # MA1-24654) showing cytoplasmic staining of catecholaminergic cells and their processes. Peroxidase substrate: nickel DAB, Counterstain: eosin.

5 References

Immunohistochemistry (5)

Brain and development

Melatonin alterations and brain acetylcholine lesions in sleep disorders in Cockayne syndrome.

"MA1-24654 was used in immunohistochemistry to study Cockayne syndrome sleep disorders and the roles played by altered melatonin metabolism and loss of acetylcholine neurons"

Authors: Okoshi Y, Tanuma N, Miyata R, Hayashi M

Species
Human

Dilution
1:400

Year
2014

Brain and development

An autopsy case of microencephaly, bizarre putaminal lesion, and cerebellar atrophy with heart and liver diseases.

"MA1-24654 was used in immunohistochemistry to report on an autopsy case displaying microencephaly, putaminal lesion, and cerebellar atrophy plus heart and liver disease"

Authors: Okoshi Y, Hayashi M, Kanda S, Yamamoto T

Species
Human

Dilution
1:400

Year
2014

[View more IHC references on thermofisher.com](#)

More applications with references on thermofisher.com

For Research Use Only. Not for use in diagnostic procedures. Not for resale without express authorization. Products are warranted to operate or perform substantially in conformance with published Product specifications in effect at the time of sale, as set forth in the Production documentation, specifications and/or accompanying package inserts ("Documentation"). No claim of suitability for use in applications regulated by FDA is made. The warranty provided herein is valid only when used by properly trained individuals. Unless otherwise stated in the Documentation, this warranty is limited to one year from date of shipment when the Product is subjected to normal, proper and intended usage. This warranty does not extend to anyone other than the Buyer. Any model or sample furnished to Buyer is merely illustrative of the general type and quality of goods and does not represent that any Product will conform to such model or sample. NO OTHER WARRANTIES, EXPRESS OR IMPLIED, ARE GRANTED INCLUDING WITHOUT LIMITATION, IMPLIED WARRANTIES OF MERCHANTABILITY, FITNESS FOR ANY PARTICULAR PURPOSE, OR NON INFRINGEMENT. BUYER'S EXCLUSIVE REMEDY FOR NON-CONFORMING PRODUCTS DURING THE WARRANTY PERIOD IS LIMITED TO REPAIR, REPLACEMENT OF OR REFUND FOR THE NON-CONFORMING PRODUCT(S) AT SELLER'S SOLE OPTION. THERE IS NO OBLIGATION TO REPAIR, REPLACE OR REFUND FOR PRODUCTS AS THE RESULT OF (I) ACCIDENT, DISASTER OR EVENT OF FORCE MAJEURE, (II) MISUSE, FAULT OR NEGLIGENCE OF OR BY BUYER, (III) USE OF THE PRODUCTS IN A MANNER FOR WHICH THEY WERE NOT DESIGNED, OR (IV) IMPROPER STORAGE AND HANDLING OF THE PRODUCTS. Unless otherwise expressly stated on the Product or in the documentation accompanying the Product, the Product is intended for research only and is not to be used for any other purpose, including without limitation, unauthorized commercial uses, in vitro diagnostic uses, ex vivo or in vivo therapeutic uses, or any type of consumption by or application to human or animals.