

beta Amyloid Monoclonal Antibody (2C8)

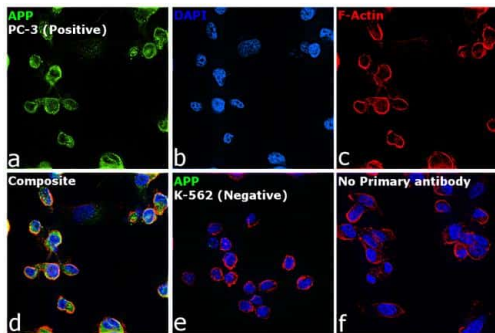
Product Details	
Size	50 µg
Species Reactivity	Human, Mouse
Published Species	Human
Host/Isotype	Mouse / IgG2b
Class	Monoclonal
Type	Antibody
Clone	2C8
Conjugate	Unconjugated
Immunogen	Synthetic peptide corresponding to residues 1-16 of beta Amyloid.
Form	Liquid
Concentration	1 mg/mL
Purification	Protein A
Storage buffer	PBS, pH 7.2, with 50% glycerol
Contains	no preservative
Storage conditions	Store at 4°C short term. For long term storage, store at -20°C, avoiding freeze/thaw cycles.
RRID	AB_779257

Applications	Tested Dilution	Publications
Western Blot (WB)	0.5-1 µg/mL	1 Publication
Immunohistochemistry (IHC)	10 µg/mL	-
Immunocytochemistry (ICC/IF)	1:200	-

Product Specific Information

This antibody reacts with synthetic beta amyloid (Abeta 40 and Abeta 42) in Western blots.

Product Images For beta Amyloid Monoclonal Antibody (2C8)

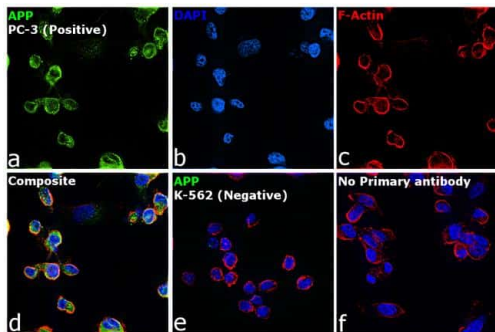


beta Amyloid Antibody (MA1-25493)

Antibody specificity was demonstrated by detection of differential basal expression of the target across cell models owing to their inherent genetic constitution. Immunofluorescence analysis using Anti-beta Amyloid Monoclonal Antibody (2C8) (Product # MA1-25493), shows positive Cytoplasmic, Nuclear and Plasma Membrane localization in PC-3 as compared to K-562 cells which is null for APP. {RE}

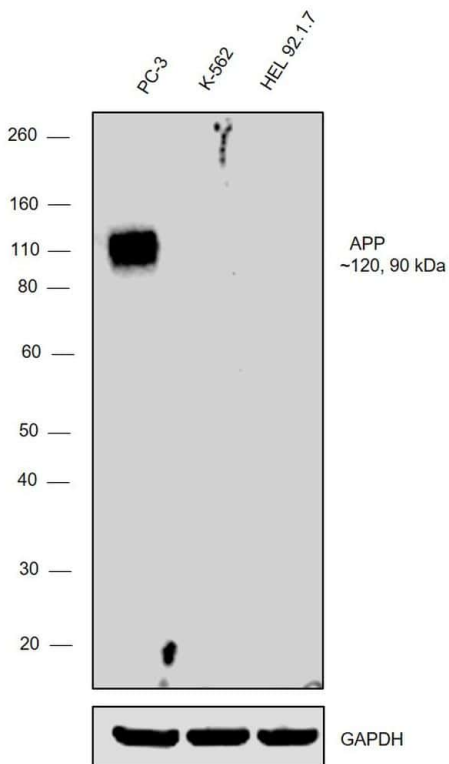
beta Amyloid Antibody (MA1-25493) in ICC/IF

Immunofluorescence analysis of beta Amyloid was performed using 70% confluent log phase PC-3 cells. The cells were fixed with 4% paraformaldehyde for 10 minutes, permeabilized with 0.1% Triton™ X-100 for 15 minutes, and blocked with 2% BSA for 45 minutes at room temperature. The cells were labeled with beta Amyloid Monoclonal Antibody (2C8) (Product # MA1-25493) at 1:200 dilution in 0.1% BSA, incubated at 4 degree celsius overnight and then labeled with Goat anti-Mouse IgG (H+L) Highly Cross-Adsorbed Secondary Antibody, Alexa Fluor Plus 488 (Product # A32723), (1:3000 dilution), for 45 minutes at room temperature (Panel a: Green). Nuclei (Panel b: Blue) were stained with ProLong™ Diamond Antifade Mountant with DAPI (Product # P36962). F-actin (Panel c: Red) was stained with Rhodamine Phalloidin (Product # R415, 1:300 dilution). Panel d represents the merged image showing Cytoplasm, Plasma membrane and Nuclear localization. Panel e represents merged image for K-562 cells showing no staining for APP. Panel f represents control cells with no primary antibody to assess background. The images were captured at 60X magnification.



beta Amyloid Antibody (MA1-25493) in WB

Western blot was performed using Anti-beta Amyloid Monoclonal Antibody (2C8) (Product # MA1-25493) and a 120, 90 kDa band corresponding to beta Amyloid was observed across in PC-3 and not in K-562 and HEL 92.1.7. Whole cell extracts (30 µg lysate) of PC-3 (Lane 1), K-562 (Lane 2) and HEL 92.1.7 (Lane 3), were electrophoresed using NuPAGE™ 4-12% Bis-Tris Protein Gel (Product # NP0321BOX). Resolved proteins were then transferred onto a Nitrocellulose membrane (Product # IB23001) by iBlot® 2 Dry Blotting System (Product # IB21001). The blot was probed with the primary antibody (1ug/ml) and detected by chemiluminescence with Goat anti-Mouse IgG (H+L) Superclonal™ Recombinant Secondary Antibody, HRP (Product # A28177, 1:4000 dilution) using the iBright FL 1000 (Product # A32752). Chemiluminescent detection was performed using Novex® ECL Chemiluminescent Substrate Reagent Kit (Product # WP20005).



View more figures on thermofisher.com

1 Reference

Western Blot (1)

The Journal of biological chemistry

SCF TrCP1 activates and ubiquitylates TAp63gamma.

"MA1-25493 was used in western blot to study the activation and ubiquitinylation of TAp63gamma by SCF TrCP1"

Authors: Gallegos JR, Litersky J, Lee H, Sun Y, Nakayama K, Nakayama K, Lu H

Year
2008

Species
Human

For Research Use Only. Not for use in diagnostic procedures. Not for resale without express authorization. Products are warranted to operate or perform substantially in conformance with published Product specifications in effect at the time of sale, as set forth in the Production documentation, specifications and/or accompanying package inserts ("Documentation"). No claim of suitability for use in applications regulated by FDA is made. The warranty provided herein is valid only when used by properly trained individuals. Unless otherwise stated in the Documentation, this warranty is limited to one year from date of shipment when the Product is subjected to normal, proper and intended usage. This warranty does not extend to anyone other than the Buyer. Any model or sample furnished to Buyer is merely illustrative of the general type and quality of goods and does not represent that any Product will conform to such model or sample. NO OTHER WARRANTIES, EXPRESS OR IMPLIED, ARE GRANTED INCLUDING WITHOUT LIMITATION, IMPLIED WARRANTIES OF MERCHANTABILITY, FITNESS FOR ANY PARTICULAR PURPOSE, OR NON INFRINGEMENT. BUYER'S EXCLUSIVE REMEDY FOR NON-CONFORMING PRODUCTS DURING THE WARRANTY PERIOD IS LIMITED TO REPAIR, REPLACEMENT OF OR REFUND FOR THE NON-CONFORMING PRODUCT(S) AT SELLER'S SOLE OPTION. THERE IS NO OBLIGATION TO REPAIR, REPLACE OR REFUND FOR PRODUCTS AS THE RESULT OF (I) ACCIDENT, DISASTER OR EVENT OF FORCE MAJEURE, (II) MISUSE, FAULT OR NEGLIGENCE OF OR BY BUYER, (III) USE OF THE PRODUCTS IN A MANNER FOR WHICH THEY WERE NOT DESIGNED, OR (IV) IMPROPER STORAGE AND HANDLING OF THE PRODUCTS. Unless otherwise expressly stated on the Product or in the documentation accompanying the Product, the Product is intended for research only and is not to be used for any other purpose, including without limitation, unauthorized commercial uses, in vitro diagnostic uses, ex vivo or in vivo therapeutic uses, or any type of consumption by or application to human or animals.