

Sarcomeric alpha Actin Monoclonal Antibody (5C5)

Product Details	
Size	500 µL
Species Reactivity	Bovine, Fish, Guinea pig, Human, Mouse, Sheep, Pig, Rabbit, Reptile, Rat, Xenopus
Published Species	Dog, Human
Host/Isotope	Mouse / IgM
Class	Monoclonal
Type	Antibody
Clone	5C5
Conjugate	Unconjugated
Immunogen	Purified rabbit striated muscle actin.
Form	Liquid
Storage buffer	PBS
Contains	0.1% sodium azide
Storage Conditions	4° C, do not freeze
RRID	AB_795757

Applications	Tested	Dilution	Published
Immunohistochemistry (IHC)	-		3 Publications
Immunocytochemistry (ICC)	✓	1:100-1:500	
Immunofluorescence (IF)	✓	Assay-Dependent	
Immunohistochemistry (Frozen) (IHC (F))	✓	1:25-1:50	
Immunohistochemistry (Paraffin) (IHC (P))	✓	1:25-1:50	

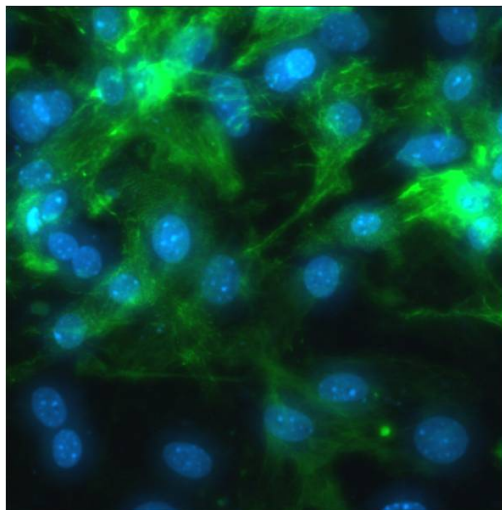
Product Specific Information

MA1-26928 detects alpha sarcomeric Actin from carp, bovine, mouse, guinea pig, human, rabbit, rat, ovine, snake, and *Xenopus laevis* samples.

MA1-26928 has been successfully used in immunohistochemistry (paraffin) and IF/ICC procedures.

The MA1-26928 immunogen is purified rabbit striated muscle actin.

Product Images For Sarcomeric alpha Actin Monoclonal Antibody (5C5)



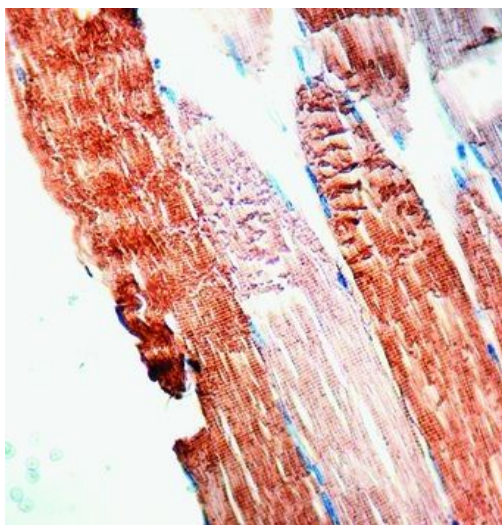
Sarcomeric alpha Actin Antibody (MA1-26928) in IF

Immunofluorescent analysis of Sarcomeric alpha actin (green) in cultured primary cardiomyocytes. Primary cardiomyocytes were isolated and cultured using the Primary Cardiomyocyte Isolation Kit (Product # 88281). Cells were grown in 24-well plates (seeded at 5×10^5 cells/well) or in 35mm glass bottom plates (at a density of 2.5×10^6 cells/well). At day 1 and day 7, cells were fixed with 4% paraformaldehyde, permeabilized with 0.1% Triton X-100 in HBSS for 10 minutes at room temperature, and blocked with 3% BSA in PBS (Product # 37525) for 30 minutes at room temperature. Cells were probed with a Sarcomeric alpha actin monoclonal antibody (Product # MA1-26928) at dilution of 1:300 for 2 hours at room temperature or overnight at 4 °C, washed with HBSS, and incubated with a DyLight 488-conjugated goat anti-mouse IgG secondary antibody (Product # 35502) at dilution of 1:500 for 1 hour at room temperature. Nuclei (blue) were visualized using Hoechst 33342 (Product # 62249). Images were taken at 20X magnification on a Carl Zeiss microscope (AxioVision Rel. 4.7).



Sarcomeric alpha Actin Antibody (MA1-26928) in IHC

Immunohistochemical analysis of Sarcomeric alpha Actin in human skeletal muscle using a Sarcomeric alpha Actin monoclonal antibody (Product # MA1-26928).



Sarcomeric alpha Actin Antibody (MA1-26928) in IHC

Immunohistochemical analysis of Sarcomeric alpha Actin in human skeletal muscle using a Sarcomeric alpha Actin monoclonal antibody (Product # MA1-26928).

[View more figures on thermofisher.com](https://www.thermofisher.com)

3 References

Immunohistochemistry (3)

Experimental and therapeutic medicine

NF-B inhibitor on Toll-like receptor 4 signal-induced expression of angiotensinogen and AT1a receptor in neonatal rat left ventricular myocytes.

"Published figure using Sarcomeric alpha Actin monoclonal antibody (Product # MA1-26928) in Immunohistochemistry"

Authors: Jiang H,Wang HY,Wang JW,Lou DY,Niu N,Li GH,Qu P

Species
Not Applicable

Dilution
Not Cited

Year
2018

Journal of veterinary medicine. A, Physiology, pathology, clinical medicine

Valvular cardiac myxoma in a dog.

"MA1-26928 was used in immunohistochemistry to report on a case of valvular cardiac myxoma in a dog"

Authors: Akkoc A,Ozyigit MO,Cangul IT

Species
Dog

Dilution
Not Cited

Year
2007

[View more IHC references on thermofisher.com](#)

For Research Use Only. Not for use in diagnostic procedures. Not for resale without express authorization. Products are warranted to operate or perform substantially in conformance with published Product specifications in effect at the time of sale, as set forth in the Production documentation, specifications and/or accompanying package inserts ("Documentation"). No claim of suitability for use in applications regulated by FDA is made. The warranty provided herein is valid only when used by properly trained individuals. Unless otherwise stated in the Documentation, this warranty is limited to one year from date of shipment when the Product is subjected to normal, proper and intended usage. This warranty does not extend to anyone other than the Buyer. Any model or sample furnished to Buyer is merely illustrative of the general type and quality of goods and does not represent that any Product will conform to such model or sample. NO OTHER WARRANTIES, EXPRESS OR IMPLIED, ARE GRANTED INCLUDING WITHOUT LIMITATION, IMPLIED WARRANTIES OF MERCHANTABILITY, FITNESS FOR ANY PARTICULAR PURPOSE, OR NON INFRINGEMENT. BUYER'S EXCLUSIVE REMEDY FOR NON-CONFORMING PRODUCTS DURING THE WARRANTY PERIOD IS LIMITED TO REPAIR, REPLACEMENT OF OR REFUND FOR THE NON-CONFORMING PRODUCT(S) AT SELLER'S SOLE OPTION. THERE IS NO OBLIGATION TO REPAIR, REPLACE OR REFUND FOR PRODUCTS AS THE RESULT OF (I) ACCIDENT, DISASTER OR EVENT OF FORCE MAJEURE, (II) MISUSE, FAULT OR NEGLIGENCE OF OR BY BUYER, (III) USE OF THE PRODUCTS IN A MANNER FOR WHICH THEY WERE NOT DESIGNED, OR (IV) IMPROPER STORAGE AND HANDLING OF THE PRODUCTS. Unless otherwise expressly stated on the Product or in the documentation accompanying the Product, the Product is intended for research only and is not to be used for any other purpose, including without limitation, unauthorized commercial uses, in vitro diagnostic uses, ex vivo or in vivo therapeutic uses, or any type of consumption by or application to human or animals.