

TLR4 Monoclonal Antibody (HTA125)

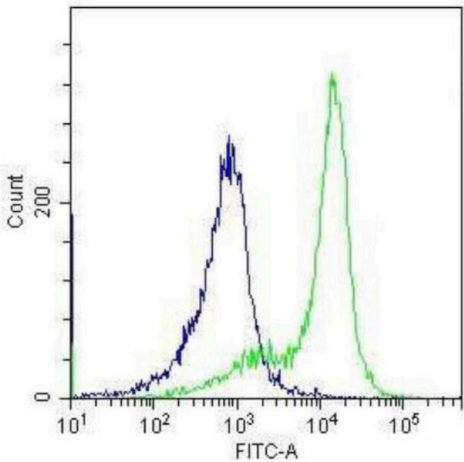
Product Details	
Size	100 µg
Species Reactivity	Dog, Cat, Guinea pig, Human, Mouse, Non-human primate, Pig, Rhesus monkey
Published Species	Human, Mouse
Host/Isotype	Mouse / IgG2a
Class	Monoclonal
Type	Antibody
Clone	HTA125
Conjugate	Unconjugated
Immunogen	Ba/F3 cell line expressing TLR4
Form	Liquid
Concentration	1 mg/mL
Purification	Protein G
Storage buffer	PBS
Contains	0.09% sodium azide
Storage conditions	Store at 4°C short term. For long term storage, store at -20°C, avoiding freeze/thaw cycles.
RRID	AB_1961056

Applications	Tested Dilution	Publications
Immunocytochemistry (ICC/IF)	Assay-dependent	-
Flow Cytometry (Flow)	1:10-1:25	3 Publications
Immunoprecipitation (IP)	Assay-dependent	-
Neutralization (Neu)	Assay-dependent	2 Publications

Product Specific Information

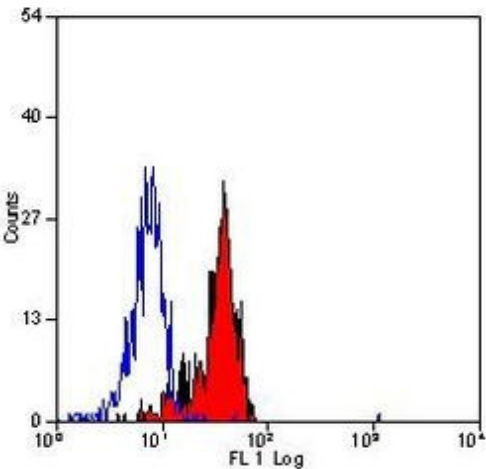
MA1-33380 detects TLR4 from guinea pig, non-human primate, human, pig and cat samples.

Product Images For TLR4 Monoclonal Antibody (HTA125)



TLR4 Antibody (MA1-33380) in Flow

Flow Cytometry analysis of TLR4 in formaldehyde-fixed THP-1 cells (green) compared to an isotype control (blue). Staining was performed using a TLR4 monoclonal antibody (Product # MA1-33380) at a dilution of 2µg x 10⁶ cells, followed by secondary detection using a Donkey anti-Mouse IgG (H+L) Cross Adsorbed Secondary Antibody, DyLight 488 conjugate (Product # A-21202) at a dilution of 1:200. Mouse IgG2a Isotype Control (Product # MA5-14441) was used as a negative control at the same dilution as the primary antibody. Data provided courtesy of Antibody Resource.



TLR4 Antibody (MA1-33380) in Flow

Flow Cytometry analysis of CD42a was performed in human peripheral blood monocytes using CD42a Monoclonal Antibody (GR-P) (Product # MA1-91023).

Flow Cytometry (3)

<p>Journal of leukocyte biology</p> <p>The protease inhibitor cystatin C down-regulates the release of IL- and TNF- in lipopolysaccharide activated monocytes.</p> <p>"MA133380 was used in flow cytometry to assess the ability of human cystatin C to alter pathogenic activated monocytes and modulate Crohn's disease"</p> <p>Authors: Gren ST,Janciauskiene S,Sandeep S,Jonigk D,Kvist PH,Gerwien JG,Håkansson K,Grip O</p>	<p>Year 2016</p> <p>Species Human</p>
<p>PloS one</p> <p>Elevated Toll-Like Receptor-Induced CXCL8 Secretion in Human Blood Basophils from Allergic Donors Is Independent of Toll-Like Receptor Expression Levels.</p> <p>"MA133380 was used in flow cytometry to assess expression levels of Toll-like receptor 1, 2, 4 and 6 on purified basophils from birch pollen-, house dust mite-, and non-allergic individuals"</p> <p>Authors: Steiner M,Hawranek T,Schneider M,Ferreira F,Horejs-Hoeck J,Harrer A,Himly M</p>	<p>Year 2016</p> <p>Species Human</p>

[View more Flow references on thermofisher.com](#)

Neutralization (2)

<p>Hepatology (Baltimore, Md.)</p> <p>Dysfunctional B-cell activation in cirrhosis resulting from hepatitis C infection associated with disappearance of CD27-positive B-cell population.</p> <p>"MA1-33380 was used in blocking or activating experiment to study the role of hepatitis C infection in the B-cell dysfunction in cirrhosis"</p> <p>Authors: Doi H,Iyer TK,Carpenter E,Li H,Chang KM,Vonderheide RH,Kaplan DE</p>	<p>Year 2012</p> <p>Species Mouse</p>
<p>Journal of immunology (Baltimore, Md. : 1950)</p> <p>IFN-gamma primes intact human coronary arteries and cultured coronary smooth muscle cells to double-stranded RNA- and self-RNA-induced inflammatory responses by upregulating TLR3 and melanoma differentiation-associated gene 5.</p> <p>"MA1-33380 was used in blocking or activating experiment to investigate the contribution of RNA to the inflammatory milieu of arteriosclerosis"</p> <p>Authors: Ahmad U,Ali R,Lebastchi AH,Qin L,Lo SF,Yakimov AO,Khan SF,Choy JC,Geirsson A,Pober JS,Tellides G</p>	<p>Year 2010</p> <p>Species Human</p>

More applications with references on thermofisher.com

For Research Use Only. Not for use in diagnostic procedures. Not for resale without express authorization. Products are warranted to operate or perform substantially in conformance with published Product specifications in effect at the time of sale, as set forth in the Production documentation, specifications and/or accompanying package inserts ("Documentation"). No claim of suitability for use in applications regulated by FDA is made. The warranty provided herein is valid only when used by properly trained individuals. Unless otherwise stated in the Documentation, this warranty is limited to one year from date of shipment when the Product is subjected to normal, proper and intended usage. This warranty does not extend to anyone other than the Buyer. Any model or sample furnished to Buyer is merely illustrative of the general type and quality of goods and does not represent that any Product will conform to such model or sample. NO OTHER WARRANTIES, EXPRESS OR IMPLIED, ARE GRANTED INCLUDING WITHOUT LIMITATION, IMPLIED WARRANTIES OF MERCHANTABILITY, FITNESS FOR ANY PARTICULAR PURPOSE, OR NON-INFRINGEMENT. BUYER'S EXCLUSIVE REMEDY FOR NON-CONFORMING PRODUCTS DURING THE WARRANTY PERIOD IS LIMITED TO REPAIR, REPLACEMENT OF OR REFUND FOR THE NON-CONFORMING PRODUCT(S) AT SELLER'S SOLE OPTION. THERE IS NO OBLIGATION TO REPAIR, REPLACE OR REFUND FOR PRODUCTS AS THE RESULT OF (i) ACCIDENT, DISASTER OR EVENT OF FORCE MAJEURE, (ii) MISUSE, FAULT OR NEGLIGENCE OF OR BY BUYER, (iii) USE OF THE PRODUCTS IN A MANNER FOR WHICH THEY WERE NOT DESIGNED, OR (iv) IMPROPER STORAGE AND HANDLING OF THE PRODUCTS. Unless otherwise expressly stated on the Product or in the documentation accompanying the Product, the Product is intended for research only and is not to be used for any other purpose, including without limitation, unauthorized commercial uses, in vitro diagnostic uses, ex vivo or in vivo therapeutic uses, or any type of consumption by or application to human or animals.