

p21 Monoclonal Antibody (WA-1)

Product Details	
Size	100 µg
Species Reactivity	Human, Non-human primate
Published Species	Human
Host/Isotope	Mouse / IgG1
Class	Monoclonal
Type	Antibody
Clone	WA-1
Conjugate	Unconjugated
Immunogen	Full length native protein (purified) (Human).
Form	Liquid
Concentration	1 mg/mL
Purification	IgG fraction
Storage buffer	PBS, pH 7.4
Contains	15mM sodium azide
Storage Conditions	Store at 4°C short term. For long term storage, store at -20°C, avoiding freeze/thaw cycles.
RRID	AB_1959169

Applications	Tested	Dilution	Published
Western Blot (WB)	✓	Assay dependent	1 Publication
ELISA (ELISA)	✓	Assay dependent	
Immunocytochemistry (ICC)	✓	Assay-dependent	
Immunofluorescence (IF)	✓	Assay-dependent	
Immunohistochemistry (Paraffin) (IHC (P))	✓	Assay-dependent	

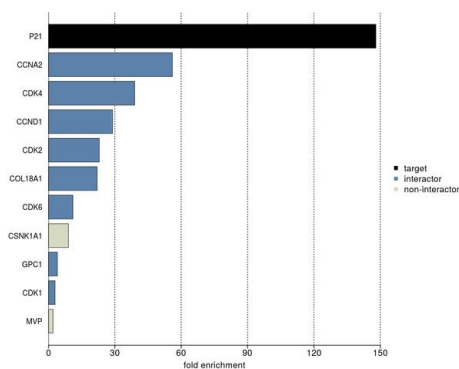
Product Specific Information

MA1-33926 detects p21 from monkey and human samples.

MA1-33926 has been successfully used in Western blot and ELISA applications.

The MA1-33926 immunogen is: Full length native protein (purified) (Human).

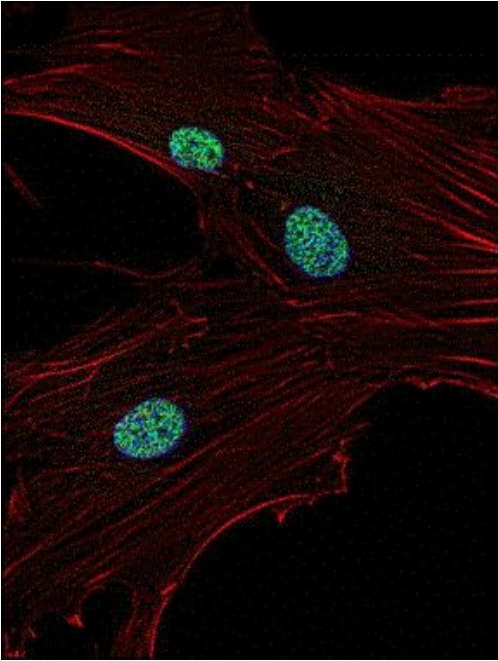
Store product as a concentrated solution. Centrifuge briefly prior to opening the vial. For short-term storage (1-2 weeks), product can be stored at 4°C. For long-term storage, aliquot and store product at -20° C or below, avoiding multiple freeze-thaw cycles.



p21 Antibody (MA1-33926)

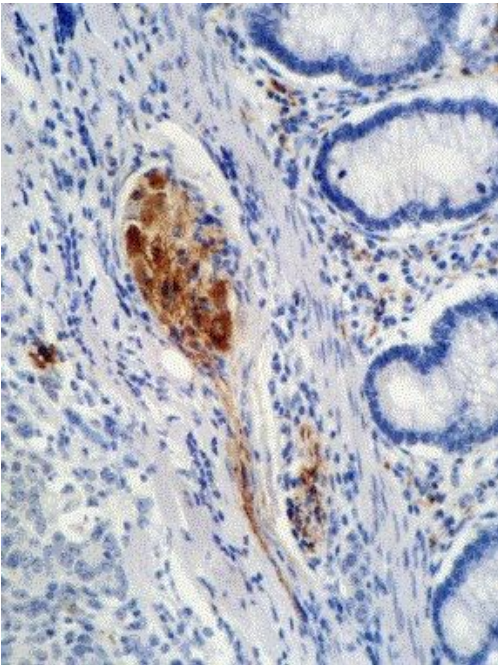
IP-MS enrichment of P21 (LFQ intensity): P21 was enriched 148-fold from HCT116 lysate compared to background proteins, using the optimized IP-MS workflow with Pierce MS-Compatible Magnetic IP Kit protein A/G (Product # 90409) and P21 antibody (Product # MA1-33926). The STRING database (www.string-db.org) was used to identify the protein interactor list. See more information on IP-MS verification of antibody selectivity. IP-MS validation info.

Product Images For p21 Monoclonal Antibody (WA-1)



p21 Antibody (MA1-33926) in IF

Immunofluorescent analysis of p21/Cip1 in human primary fibroblasts using a p21/Cip1 monoclonal antibody (Product # MA1-33926) (green). Actin was stained using a phalloidin (red) and nuclei were stained using DAPI (blue).



p21 Antibody (MA1-33926) in IHC (P)

Immunohistochemical analysis of p21/Cip1 in paraffin-embedded colon carcinoma using a p21/Cip1 monoclonal antibody (Product # MA1-33926).

Western Blot (1)

Cell proliferation

Cyclin-dependent kinase inhibitors and basement membrane interact to regulate breast epithelial cell differentiation and acinar morphogenesis.

"MA1-33926 was used in western blot to study the role of cyclin-dependent kinase inhibitors and the basement membrane in regulating breast epithelial cell differentiation"

Authors: Coppock HA, Gilham DE, Howell A, Clarke RB

Species
Human

Dilution
Not Cited

Year
2007

For Research Use Only. Not for use in diagnostic procedures. Not for resale without express authorization. Products are warranted to operate or perform substantially in conformance with published Product specifications in effect at the time of sale, as set forth in the Production documentation, specifications and/or accompanying package inserts ("Documentation"). No claim of suitability for use in applications regulated by FDA is made. The warranty provided herein is valid only when used by properly trained individuals. Unless otherwise stated in the Documentation, this warranty is limited to one year from date of shipment when the Product is subjected to normal, proper and intended usage. This warranty does not extend to anyone other than the Buyer. Any model or sample furnished to Buyer is merely illustrative of the general type and quality of goods and does not represent that any Product will conform to such model or sample. NO OTHER WARRANTIES, EXPRESS OR IMPLIED, ARE GRANTED INCLUDING WITHOUT LIMITATION, IMPLIED WARRANTIES OF MERCHANTABILITY, FITNESS FOR ANY PARTICULAR PURPOSE, OR NON INFRINGEMENT. BUYER'S EXCLUSIVE REMEDY FOR NON-CONFORMING PRODUCTS DURING THE WARRANTY PERIOD IS LIMITED TO REPAIR, REPLACEMENT OF OR REFUND FOR THE NON-CONFORMING PRODUCT(S) AT SELLER'S SOLE OPTION. THERE IS NO OBLIGATION TO REPAIR, REPLACE OR REFUND FOR PRODUCTS AS THE RESULT OF (I) ACCIDENT, DISASTER OR EVENT OF FORCE MAJEURE, (II) MISUSE, FAULT OR NEGLIGENCE OF OR BY BUYER, (III) USE OF THE PRODUCTS IN A MANNER FOR WHICH THEY WERE NOT DESIGNED, OR (IV) IMPROPER STORAGE AND HANDLING OF THE PRODUCTS. Unless otherwise expressly stated on the Product or in the documentation accompanying the Product, the Product is intended for research only and is not to be used for any other purpose, including without limitation, unauthorized commercial uses, in vitro diagnostic uses, ex vivo or in vivo therapeutic uses, or any type of consumption by or application to human or animals.