

# MAP2 Monoclonal Antibody (MT-01)

Product Details	
Size	100 µg
Species Reactivity	Bovine, Cat, Human, Mouse, Pig, Rat
Host/Isotype	Mouse / IgG1
Class	Monoclonal
Type	Antibody
Clone	MT-01
Conjugate	Unconjugated
Immunogen	Thermostable fraction of bovine brain microtubules.
Form	Liquid
Concentration	1 mg/mL
Purification	Protein A
Storage buffer	PBS
Contains	15mM sodium azide
Storage conditions	4° C, do not freeze
RRID	AB_1958354

Applications	Tested Dilution	Publications
Western Blot (WB)	Assay-dependent	-
Immunocytochemistry (ICC/IF)	Assay-dependent	-
Immunoprecipitation (IP)	Assay-dependent	-

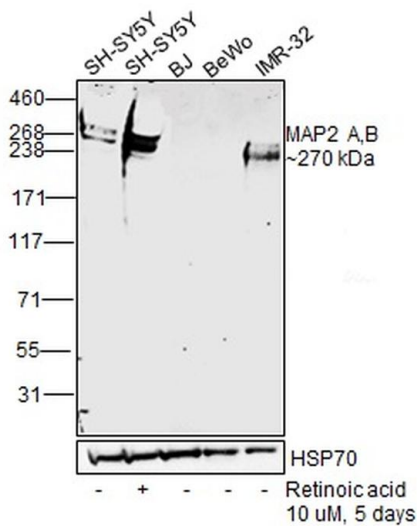
## Product Specific Information

MA1-34378 detects MAP2 from bovine, porcine, feline, mouse samples.

## Product Images For MAP2 Monoclonal Antibody (MT-01)

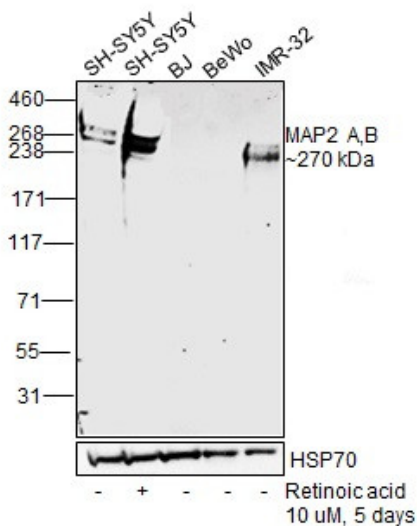
### MAP2 Antibody (MA1-34378) in WB

Western blot was performed using Anti-MAP2 Monoclonal Antibody (HM-2) (Product # MA1-34378) and a ~270 kDa band corresponding to MAP2 A, B was observed across positive cell lines SH-SY5Y, SH-SY5Y differentiated to neurons (10  $\mu$ M Retinoic acid for 5 days) and IMR-32 tested. Whole cell extracts (30  $\mu$ g lysate) of SH-SY5Y (Lane 1), SH-SY5Y treated with Retinoic acid (Lane 2), BJ (Lane 3), BeWo (Lane 4) and IMR-32 (Lane 5) were electrophoresed using NuPAGE™ 3-8% Tris-Acetate Protein Gel (Product # EA0378BOX). Resolved proteins were then transferred onto a Nitrocellulose membrane (Product # IB23001) by iBlot® 2 Dry Blotting System (Product # IB21001). The blot was probed with the primary antibody (1:1,000 dilution) and detected by chemiluminescence with Goat anti-Mouse IgG (H+L) Superclonal™ Recombinant Secondary Antibody, HRP (Product # A28177, 1:4,000 dilution) using the iBright FL 1000 (Product # A32752). Chemiluminescent detection was performed using SuperSignal™ West Dura Extended Duration Substrate (Product # 34076).



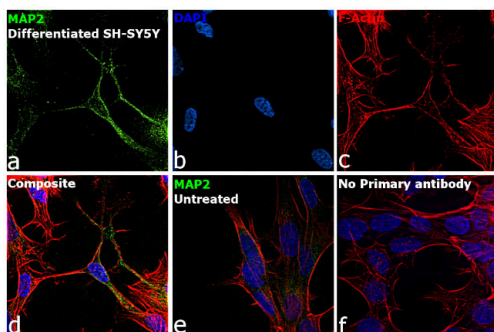
### MAP2 Antibody (MA1-34378)

Antibody specificity was demonstrated by detection of differential basal expression of the target across cell lines owing to their inherent genetic constitution. Increased expression of Microtubule-associated protein 2 was observed in SH-SY5Y following its differentiation into neurons, using Anti-MAP2 Monoclonal Antibody (MT-01) (Product # MA1-34378) in Western Blot. The same antibody was used to observe higher expression levels of MAP2 in IMR-32 against BJ and BeWo. {RE}



### MAP2 Antibody (MA1-34378) in ICC/IF

Immunofluorescence analysis of Microtubule-associated protein 2 was performed using 70% confluent log phase SH-SY5Y cells differentiated to neurons (Retinoic acid 10  $\mu$ M for 5 days). The cells were fixed with 4% paraformaldehyde for 10 minutes, permeabilized with 0.1% Triton™ X-100 for 15 minutes, and blocked with 2% BSA for 45 minutes at room temperature. The cells were labeled with MAP2 Monoclonal Antibody (MT-01) (Product # MA1-34378) at 1:100 dilution in 0.1% BSA, incubated at 4 degree celsius overnight and then labeled with Donkey anti-Mouse IgG (H+L) Highly Cross-Adsorbed Secondary Antibody, Alexa Fluor Plus 488 (Product # A32766), (1:2000 dilution), for 45 minutes at room temperature (Panel a: Green). Nuclei (Panel b: Blue) were stained with ProLong™ Diamond Antifade Mountant with DAPI (Product # P36962). F-actin (Panel c: Red) was stained with Rhodamine Phalloidin (Product # R415, 1:300 dilution). Panel d represents the merged image showing neuronal dendrites, cytoplasm, plasma membrane and cytoskeleton localization. Panel e represents undifferentiated SH-SY5Y cells. Panel f represents control cells with no primary antibody to assess background. The images were captured at 60X magnification.



---

## View more figures on [thermofisher.com](https://thermofisher.com)

For Research Use Only. Not for use in diagnostic procedures. Not for resale without express authorization. Products are warranted to operate or perform substantially in conformance with published Product specifications in effect at the time of sale, as set forth in the Production documentation, specifications and/or accompanying package inserts ("Documentation"). No claim of suitability for use in applications regulated by FDA is made. The warranty provided herein is valid only when used by properly trained individuals. Unless otherwise stated in the Documentation, this warranty is limited to one year from date of shipment when the Product is subjected to normal, proper and intended usage. This warranty does not extend to anyone other than the Buyer. Any model or sample furnished to Buyer is merely illustrative of the general type and quality of goods and does not represent that any Product will conform to such model or sample. NO OTHER WARRANTIES, EXPRESS OR IMPLIED, ARE GRANTED INCLUDING WITHOUT LIMITATION, IMPLIED WARRANTIES OF MERCHANTABILITY, FITNESS FOR ANY PARTICULAR PURPOSE, OR NON INFRINGEMENT. BUYER'S EXCLUSIVE REMEDY FOR NON-CONFORMING PRODUCTS DURING THE WARRANTY PERIOD IS LIMITED TO REPAIR, REPLACEMENT OF OR REFUND FOR THE NON-CONFORMING PRODUCT(S) AT SELLER'S SOLE OPTION. THERE IS NO OBLIGATION TO REPAIR, REPLACE OR REFUND FOR PRODUCTS AS THE RESULT OF (I) ACCIDENT, DISASTER OR EVENT OF FORCE MAJEURE, (II) MISUSE, FAULT OR NEGLIGENCE OF OR BY BUYER, (III) USE OF THE PRODUCTS IN A MANNER FOR WHICH THEY WERE NOT DESIGNED, OR (IV) IMPROPER STORAGE AND HANDLING OF THE PRODUCTS. Unless otherwise expressly stated on the Product or in the documentation accompanying the Product, the Product is intended for research only and is not to be used for any other purpose, including without limitation, unauthorized commercial uses, in vitro diagnostic uses, ex vivo or in vivo therapeutic uses, or any type of consumption by or application to human or animals.