

ErbB2 (HER-2) Monoclonal Antibody (CB11)

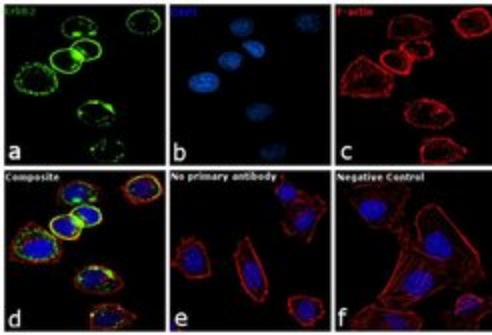
Product Details	
Size	1 mL
Species	Human, Mammal, Mouse, Rat
Published Species	Cat, Human, Mouse
Expression System	Mouse / IgG1
Class	Monoclonal
Type	Antibody
Clone	CB11
Conjugate	Unconjugated
Immunogen	Synthetic internal domain of the C-erbB-2 oncoprotein.
Form	Liquid
Concentration	Conc. Not Determined
Storage buffer	tissue culture supernatant
Contains	15mM sodium azide
Storage Conditions	4° C
RRID	AB_1073585

Applications	Tested Dilution	Publications
Immunocytochemistry (ICC)	1:100	3 Publications
Immunofluorescence (IF)	1:100	3 Publications
Immunohistochemistry (Paraffin) (IHC (P))	1:40	3 Publications
Western Blot (WB)	1:1000	6 Publications
Immunohistochemistry (IHC)	-	24 Publications
Miscellaneous PubMed (Misc)	-	6 Publications

Product Specific Information

Specific binding has been demonstrated by immunoprecipitation with c-erbB-2 oncoprotein from SKBr3 cells. A positive control of breast adenocarcinoma is recommended.

Advanced Verification Data

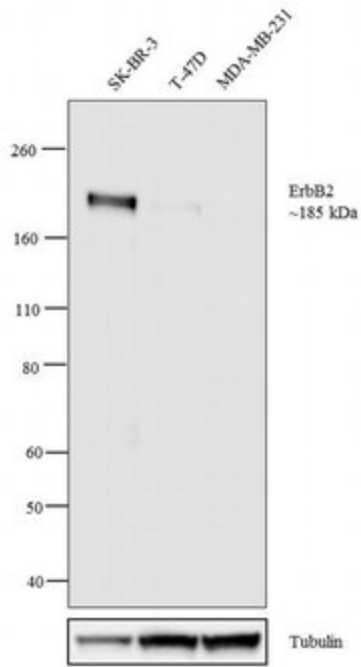


ErbB2 (HER-2) Antibody (MA1-35720)

Antibody specificity was demonstrated by detection of differential basal expression of the target across cell lines owing to their inherent genetic constitution. Expression of Her2 was observed in SK-BR-3 compared to MDAMB-231 using Her2 Monoclonal Antibody (Product # MA1-35720) in ICC. Relative expression validation info.

ErbB2 (HER-2) Antibody (MA1-35720)

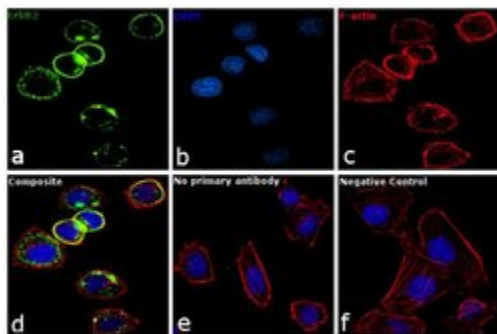
Antibody specificity was demonstrated by detection of differential basal expression of the target across cell models owing to their inherent genetic constitution. A higher level of expression of ErbB2 was observed in SK-BR-3 compared to T-47D and MDA-MB-231 using ErbB2 Monoclonal Antibody (Product # MA1-35720) in Western Blot. Relative expression validation info.



Product Images For ErbB2 (HER-2) Monoclonal Antibody (CB11)

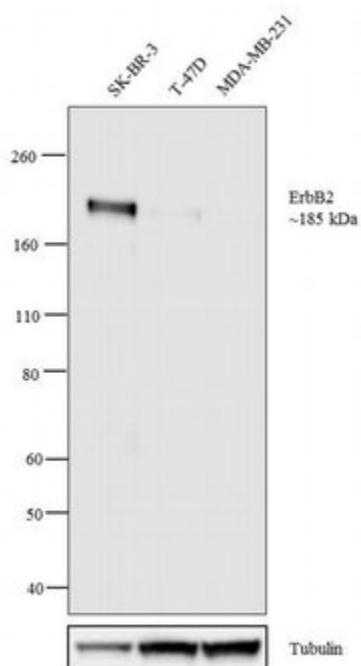
ErbB2 (HER-2) Antibody (MA1-35720) in IF

Immunofluorescence analysis of ErbB2 was performed using 70% confluent log phase SK-BR-3 cells. The cells were fixed with 4% paraformaldehyde for 10 minutes, permeabilized with 0.1% Triton™ X-100 for 10 minutes, and blocked with 1% BSA for 1 hour at room temperature. The cells were labeled with Her2 Mouse monoclonal Antibody (Product # MA1-35720) at a dilution of 1:100 in 0.1% BSA and incubated overnight at 4 degree Celsius and then labeled with Goat anti-Mouse IgG (H+L) Superclonal™ Secondary Antibody, Alexa Fluor® 488 conjugate (Product # A28175) at a dilution of 1:2000 for 45 minutes at room temperature (Panel a: green). Nuclei (Panel b: blue) were stained with SlowFade® Gold Antifade Mountant with DAPI (Product # S36938). F-actin (Panel c: red) was stained with Rhodamine Phalloidin (Product # R415, 1:300). Panel d represents the merged image showing membranous, cytoplasmic localization. Panel f represents MDA-MB-231 cells as negative controls, showing no Her2 staining. Panel e represents control cells with no primary antibody to assess background. The images were captured at 60X magnification.



ErbB2 (HER-2) Antibody (MA1-35720) in WB

Western blot analysis was performed on membrane enriched extracts (30 µg lysate) of SK-BR-3 (1), T-47D (2) and MDA-MB-231 (3). The blot was probed with Anti-ErbB2 Mouse Monoclonal Antibody (Product # MA1-35720, 1:1000 dilution) and detected by chemiluminescence using Goat anti-Mouse IgG (H+L) Superclonal™ Secondary Antibody, HRP conjugate (Product # A28177, 0.25 µg/mL, 1:4000 dilution). A 185 kDa band corresponding to ErbB2 was observed in SK-BR-3 and moderate in T-47D where as it was not observed in MDA-MB-231 which is an ErbB2 negative cell line. Known quantity of protein samples were electrophoresed using Novex® NuPAGE® 4-12 % Bis-Tris gel (Product # NP0321BOX), XCell SureLock™ Electrophoresis System (Product # EI0002) and Novex® Sharp Pre-Stained Protein Standard (Product # LC5800). Resolved proteins were then transferred onto a nitrocellulose membrane using the overnight wet transfer system. The membrane was probed with the relevant primary and secondary Antibody following blocking with 5 % skimmed milk. Chemiluminescent detection was performed using Pierce™ ECL Western Blotting Substrate (Product # 32106).



[View more figures on thermofisher.com](https://www.thermofisher.com)

Immunocytochemistry (3)

The Journal of biological chemistry

Inhibition of ezrin causes PKC-mediated internalization of erbb2/HER2 tyrosine kinase in breast cancer cells.

"Published figure using ErbB2 (HER-2) monoclonal antibody (Product # MA1-35720) in Immunofluorescence"

Authors: Jeong J,Choi J,Kim W,Dann P,Takyar F,Gefter JV,Friedman PA,Wysolmerski JJ

Species
Not Applicable

Dilution
Not Cited

Year
2019

PloS one

HER2 signaling regulates HER2 localization and membrane retention.

"MA135720 was used in immunocytochemistry and western blot to explore how HER2 signaling contributes to the formation and maintenance of membrane protrusions"

Authors: Jeong J,Kim W,Kim LK,VanHouten J,Wysolmerski JJ

Species
Human
Not Applicable

Dilution
Not Cited
Not Cited

Year
2017

[View more ICC references on thermofisher.com](#)

Immunofluorescence (3)

The Journal of biological chemistry

Inhibition of ezrin causes PKC-mediated internalization of erbb2/HER2 tyrosine kinase in breast cancer cells.

"Published figure using ErbB2 (HER-2) monoclonal antibody (Product # MA1-35720) in Immunofluorescence"

Authors: Jeong J,Choi J,Kim W,Dann P,Takyar F,Gefter JV,Friedman PA,Wysolmerski JJ

Species
Not Applicable

Dilution
Not Cited

Year
2019

PloS one

HER2 signaling regulates HER2 localization and membrane retention.

"MA135720 was used in immunocytochemistry and western blot to explore how HER2 signaling contributes to the formation and maintenance of membrane protrusions"

Authors: Jeong J,Kim W,Kim LK,VanHouten J,Wysolmerski JJ

Species
Human
Not Applicable

Dilution
Not Cited
Not Cited

Year
2017

[View more IF references on thermofisher.com](#)

More applications with references on thermofisher.com

WB (6) **IHC (24)** **Misc (6)** **IHC (P) (3)**

For Research Use Only. Not for use in diagnostic procedures. Not for resale without express authorization. Products are warranted to operate or perform substantially in conformance with published Product specifications in effect at the time of sale, as set forth in the Production documentation, specifications and/or accompanying package inserts ("Documentation"). No claim of suitability for use in applications regulated by FDA is made. The warranty provided herein is valid only when used by properly trained individuals. Unless otherwise stated in the Documentation, this warranty is limited to one year from date of shipment when the Product is subjected to normal, proper and intended usage. This warranty does not extend to anyone other than the Buyer. Any model or sample furnished to Buyer is merely illustrative of the general type and quality of goods and does not represent that any Product will conform to such model or sample. NO OTHER WARRANTIES, EXPRESS OR IMPLIED, ARE GRANTED INCLUDING WITHOUT LIMITATION, IMPLIED WARRANTIES OF MERCHANTABILITY, FITNESS FOR ANY PARTICULAR PURPOSE, OR NON INFRINGEMENT. BUYER'S EXCLUSIVE REMEDY FOR NON-CONFORMING PRODUCTS DURING THE WARRANTY PERIOD IS LIMITED TO REPAIR, REPLACEMENT OF OR REFUND FOR THE NON-CONFORMING PRODUCT(S) AT SELLER'S SOLE OPTION. THERE IS NO OBLIGATION TO REPAIR, REPLACE OR REFUND FOR PRODUCTS AS THE RESULT OF (I) ACCIDENT, DISASTER OR EVENT OF FORCE MAJEURE, (II) MISUSE, FAULT OR NEGLIGENCE OF OR BY BUYER, (III) USE OF THE PRODUCTS IN A MANNER FOR WHICH THEY WERE NOT DESIGNED, OR (IV) IMPROPER STORAGE AND HANDLING OF THE PRODUCTS. Unless otherwise expressly stated on the Product or in the documentation accompanying the Product, the Product is intended for research only and is not to be used for any other purpose, including without limitation, unauthorized commercial uses, in vitro diagnostic uses, ex vivo or in vivo therapeutic uses, or any type of consumption by or application to human or animals.