

TLR2 Monoclonal Antibody (6C2)

Product Details

Size	100 µg
Species Reactivity	Mouse
Published Species	Mouse
Host/Isotype	Rat / IgG2b
Class	Monoclonal
Type	Antibody
Clone	6C2
Conjugate	Unconjugated
Immunogen	Murine TLR2/CD282.
Form	Liquid
Concentration	0.1 mg/mL
Purification	Protein G
Storage buffer	PBS with 0.1% BSA
Contains	0.02% sodium azide
Storage conditions	4° C
RRID	AB_1087902

Applications	Tested Dilution	Publications
Immunohistochemistry (Frozen) (IHC (F))	1:50	-
Immunocytochemistry (ICC/IF)	1:50-1:100	-
Flow Cytometry (Flow)	1:50	2 Publications
Immunoprecipitation (IP)	1:50	-

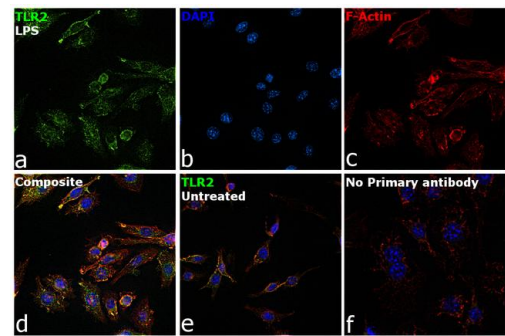
Product Specific Information

MA1-40048 detects TLR2 from mouse samples.

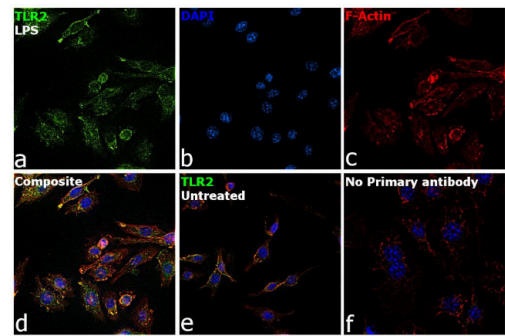
MA1-40048 has been successfully used in flow cytometry, immunoprecipitation, immunohistochemistry-frozen and immunofluorescence applications.

The MA1-40048 immunogen is mouse TLR2/CD282.

Product Images For TLR2 Monoclonal Antibody (6C2)



TLR2 Antibody (MA1-40048)
Altered expression of target protein upon cell treatment demonstrates antibody specificity. Immunofluorescence analysis of TLR2 using TLR2 Monoclonal Antibody (Product # MA1-40048) shows increased expression of TLR2 protein in Raw 264.7 cell line upon treatment with LPS in membrane lipid rafts. {TM}



TLR2 Antibody (MA1-40048) in ICC/IF
Immunofluorescence analysis of TLR2 was performed using Raw 264.7 cells and Raw 264.7 treated with LPS (500 ng/mL, 6 hours). The cells were fixed with 4% paraformaldehyde for 10 minutes, permeabilized with 0.1% Triton™ X-100 for 15 minutes, and blocked with 2% BSA for 1 hour at room temperature. The cells were labeled with TLR2 Rat Monoclonal Antibody (Product # MA1-40048) at 1:100 dilution in 0.1% BSA and incubated overnight at 4 degree and then labeled with Goat anti-Rat IgG (H+L) Cross-Adsorbed Secondary Antibody, Alexa Fluor 488 (Product # A-11006) at a dilution of 1:2000 for 45 minutes at room temperature (Panel a: green) in Raw 264.7 treated cells. Nuclei (Panel b: blue) were stained with ProLong™ Diamond Antifade Mountant with DAPI (Product # P36962). F-actin (Panel c: red) was stained with Rhodamine Phalloidin (Product # R415, 1:300). Panel d represents the merged image of Raw 264.7 treated cells, which shows higher expression for TLR2 protein showing localization in lipid rafts in membrane. Panel e represents the merged image of Raw 264.7 cells, that shows lower expression for TLR2 protein. Panel f represents control cells with no primary antibody to assess background. The images were captured at 60X magnification.

2 References

Flow Cytometry (2)

<p>PloS one</p> <p>Exploring the Functional Complementation between Grp94 and Hsp90.</p> <p>"MA140048 was used in flow cytometry to discover structural elements that distinguish Grp94 from Hsp90"</p> <p>Authors: Maharaj KA,Que NL,Hong F,Huck JD,Gill SK,Wu S,Li Z,Gewirth DT</p>	<p>Year</p> <p>2017</p> <p>Species</p> <p>Mouse</p>
<p>Proceedings of the National Academy of Sciences of the United States of America</p> <p>C-type lectin receptor DCIR modulates immunity to tuberculosis by sustaining type I interferon signaling in dendritic cells.</p> <p>"MA140048 was used in flow cytometry to find that C-type lectin dendritic cell immunoreceptor is required to modulate lung inflammation and bacterial burden in tuberculosis"</p> <p>Authors: Troegeler A,Mercier I,Cougoule C,Pietretti D,Colom A,Duval C,Vu Manh TP,Capilla F,Poincloux R,Pingris K,Nigou J,Rademann J,Dalod M,Verreck FA,Al Saati T,Lugo-Villarino G,Lepeniev B,Hudrisier D,Neyrolles O</p>	<p>Year</p> <p>2017</p> <p>Species</p> <p>Mouse</p> <p>Dilution</p> <p>1:100</p>

For Research Use Only. Not for use in diagnostic procedures. Not for resale without express authorization. Products are warranted to operate or perform substantially in conformance with published Product specifications in effect at the time of sale, as set forth in the Production documentation, specifications and/or accompanying package inserts ("Documentation"). No claim of suitability for use in applications regulated by FDA is made. The warranty provided herein is valid only when used by properly trained individuals. Unless otherwise stated in the Documentation, this warranty is limited to one year from date of shipment when the Product is subjected to normal, proper and intended usage. This warranty does not extend to anyone other than the Buyer. Any model or sample furnished to Buyer is merely illustrative of the general type and quality of goods and does not represent that any Product will conform to such model or sample. NO OTHER WARRANTIES, EXPRESS OR IMPLIED, ARE GRANTED INCLUDING WITHOUT LIMITATION, IMPLIED WARRANTIES OF MERCHANTABILITY, FITNESS FOR ANY PARTICULAR PURPOSE, OR NON-INFRINGEMENT. BUYER'S EXCLUSIVE REMEDY FOR NON-CONFORMING PRODUCTS DURING THE WARRANTY PERIOD IS LIMITED TO REPAIR, REPLACEMENT OF OR REFUND FOR THE NON-CONFORMING PRODUCT(S) AT SELLER'S SOLE OPTION. THERE IS NO OBLIGATION TO REPAIR, REPLACE OR REFUND FOR PRODUCTS AS THE RESULT OF (i) ACCIDENT, DISASTER OR EVENT OF FORCE MAJEURE, (ii) MISUSE, FAULT OR NEGLIGENCE OF OR BY BUYER, (iii) USE OF THE PRODUCTS IN A MANNER FOR WHICH THEY WERE NOT DESIGNED, OR (iv) IMPROPER STORAGE AND HANDLING OF THE PRODUCTS. Unless otherwise expressly stated on the Product or in the documentation accompanying the Product, the Product is intended for research only and is not to be used for any other purpose, including without limitation, unauthorized commercial uses, in vitro diagnostic uses, ex vivo or in vivo therapeutic uses, or any type of consumption by or application to human or animals.