

APE1 Monoclonal Antibody (13B 8E5C2)

Product Details

Size	100 µL
Species Reactivity	Dog, Human, Mouse, Non-human primate, Rat
Published Species	Human
Host/Isotype	Mouse / IgG2a
Class	Monoclonal
Type	Antibody
Clone	13B 8E5C2
Conjugate	Unconjugated
Immunogen	Full-length recombinant human APE protein.
Form	Liquid
Concentration	1 mg/mL
Purification	purified
Storage buffer	PBS
Contains	0.05% sodium azide
Storage conditions	-20° C, Avoid Freeze/Thaw Cycles
RRID	AB_325426

Applications	Tested Dilution	Publications
Western Blot (WB)	1:1,000	2 Publications
Immunohistochemistry (IHC)	-	1 Publication
Immunohistochemistry (Paraffin) (IHC (P))	1:50-1:1,000	-
Immunohistochemistry (Frozen) (IHC (F))	1/5000	-
Immunocytochemistry (ICC/IF)	1:50-1:500	-
Flow Cytometry (Flow)	2-5 µg/mL	-
Immunoprecipitation (IP)	5 µg	-
ChIP assay (ChIP)	1.5 µg/10 ⁶ cells	-
RNA Immunoprecipitation (RIP)	Assay-dependent	-

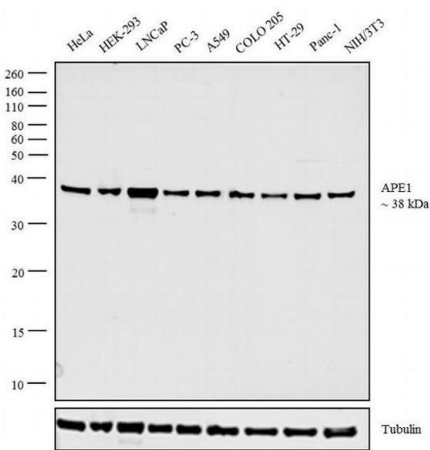
Product Specific Information

MA1-440 detects apurinic/apyrimidinic endonuclease (APE/ref-1) from human, non human primate, canine, mouse and rat samples.

MA1-440 has been successfully used in Western blot, immunohistochemical, flow cytometry and immunoprecipitation procedures. By Western blot, this antibody detects a 36 kDa protein representing APE/ref-1 in HeLa cell lysate. Immunohistochemical staining of APE/ref-1 in a variety of normal and cancerous human tissues, including ovaries, cervix, prostate, germ cell tumors, osteosarcomas, and rhabdosarcomas, with MA1-440 yields a staining pattern consistent with nuclear staining.

The MA1-440 immunogen is full-length, recombinant human APE protein.

Product Images For APE1 Monoclonal Antibody (13B 8E5C2)

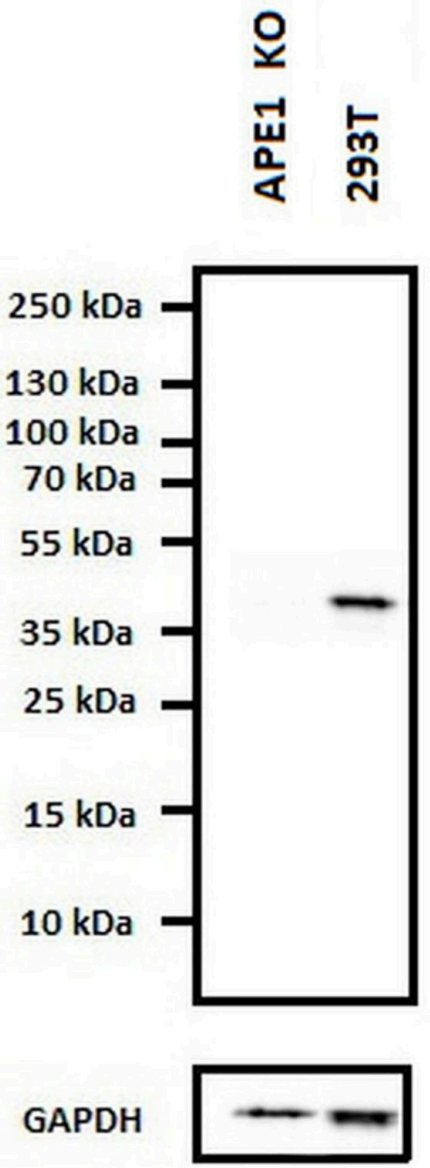


APE1 Antibody (MA1-440) in WB

Western blot analysis was performed on modified whole cell extracts (1% SDS) (30 µg lysate) of HeLa (Lane 1), HEK-293 (Lane 2), LNCaP (Lane 3), PC-3 (Lane 4), A549 (Lane 5), COLO 205 (Lane 6), HT-29 (Lane 7), Panc-1 (Lane 8) and NIH /3T3 (Lane 9). The blot was probed with Anti-APE1 Monoclonal Antibody (Product # MA1-440, 1:1000 dilution) and detected by chemiluminescence using Goat anti-Mouse IgG (H+L) Superclonal™ Secondary Antibody, HRP conjugate (Product # A28177, 0.25 µg/mL, 1:4000 dilution). A 38 kDa band corresponding to APE1 was observed across the cell lines tested.

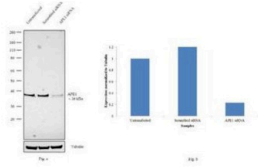
APE1 Antibody (MA1-440)

The specificity of anti-APE1 mouse monoclonal antibody (Product # MA1-440) was demonstrated by CRISPR targeted APE1 knockout in 293T cells. Western blot analysis of whole cell lysates using this antibody showed no detection of APE1 protein expression in knockout cells compared to the APE1 protein detected at ~36kDa in wild-type 293T cells. {KO}



APE1 Antibody (MA1-440)

Antibody specificity was demonstrated by siRNA mediated knockdown of target protein. HeLa cells were transfected with APE1 siRNA and reduction of signal was observed in Western Blot using APE1 Monoclonal Antibody (13B 8E5C2) (Product # MA1-440). {KD}



[View more figures on thermofisher.com](#)

3 References

Western Blot (2)

Journal of experimental & clinical cancer research : CR

APE1 redox function is required for activation of Yes-associated protein 1 under reflux conditions in Barrett's-associated esophageal adenocarcinomas.

"Published figure using APE1 monoclonal antibody (Product # MA1-440) in Western Blot"

Authors: Ballout F, Lu H, Chen L, Sriramajayam K, Que J, Meng Z, Wang TC, Giordano S, Zaika A, McDonald O, Peng D, El-Rifai W

Year
2022

Molecular cell

Endogenous DNA 3' Blocks Are Vulnerabilities for BRCA1 and BRCA2 Deficiency and Are Reversed by the APE2 Nuclease.

"MA1-440 was used in Western Blot to conclude that the main role of APE2 is to reverse blocked 3' DNA ends, problematic lesions that preclude DNA synthesis."

Authors: Álvarez-Quilón A, Wojtaszek JL, Mathieu MC, Patel T, Appel CD, Hustedt N, Rossi SE, Wallace BD, Setiawati D, Adam S, Ohashi Y, Melo H, Cho T, Gervais C, Muñoz IM, Grazzini E, Young JTF, Rouse J, Zinda M, Williams RS, Durocher D

Year
2020

Species
Human

Dilution
1:1000

Immunohistochemistry (1)

Clinical cancer research : an official journal of the American Association for Cancer Research

Studies of apurinic/apyrimidinic endonuclease/ref-1 expression in epithelial ovarian cancer: correlations with tumor progression and platinum resistance.

"MA1-440 was used in immunohistochemistry to investigate the correlations of apurinic/apyrimidinic endonuclease/ref-1 expression with tumor progression and platinum resistance in epithelial ovarian cancer"

Authors: Freitas S, Moore DH, Michael H, Kelley MR

Year
2003

Species
Human

Dilution
1:200

For Research Use Only. Not for use in diagnostic procedures. Not for resale without express authorization. Products are warranted to operate or perform substantially in conformance with published Product specifications in effect at the time of sale, as set forth in the Production documentation, specifications and/or accompanying package inserts ("Documentation"). No claim of suitability for use in applications regulated by FDA is made. The warranty provided herein is valid only when used by properly trained individuals. Unless otherwise stated in the Documentation, this warranty is limited to one year from date of shipment when the Product is subjected to normal, proper and intended usage. This warranty does not extend to anyone other than the Buyer. Any model or sample furnished to Buyer is merely illustrative of the general type and quality of goods and does not represent that any Product will conform to such model or sample. NO OTHER WARRANTIES, EXPRESS OR IMPLIED, ARE GRANTED INCLUDING WITHOUT LIMITATION, IMPLIED WARRANTIES OF MERCHANTABILITY, FITNESS FOR ANY PARTICULAR PURPOSE, OR NON-INFRINGEMENT. BUYER'S EXCLUSIVE REMEDY FOR NON-CONFORMING PRODUCTS DURING THE WARRANTY PERIOD IS LIMITED TO REPAIR, REPLACEMENT OF OR REFUND FOR THE NON-CONFORMING PRODUCT(S) AT SELLER'S SOLE OPTION. THERE IS NO OBLIGATION TO REPAIR, REPLACE OR REFUND FOR PRODUCTS AS THE RESULT OF (I) ACCIDENT, DISASTER OR EVENT OF FORCE MAJEURE, (II) MISUSE, FAULT OR NEGLIGENCE OF OR BY BUYER, (III) USE OF THE PRODUCTS IN A MANNER FOR WHICH THEY WERE NOT DESIGNED, OR (IV) IMPROPER STORAGE AND HANDLING OF THE PRODUCTS. Unless otherwise expressly stated on the Product or in the documentation accompanying the Product, the Product is intended for research only and is not to be used for any other purpose, including without limitation, unauthorized commercial uses, in vitro diagnostic uses, ex vivo or in vivo therapeutic uses, or any type of consumption by or application to human or animals.