

DRD1 Monoclonal Antibody (SG2-D1a)

Product Details

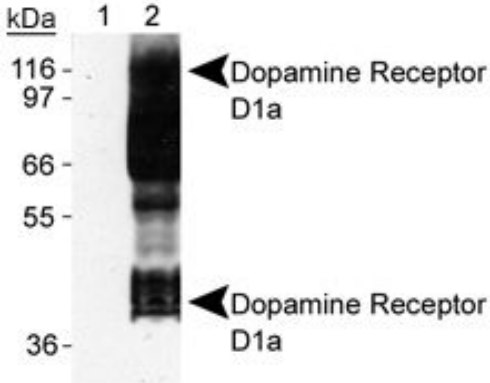
Size	100 µL
Species Reactivity	Mouse, Rat
Published Species	Marsupial
Host/Isotope	Mouse / IgG2b, kappa
Class	Monoclonal
Type	Antibody
Clone	SG2-D1a
Conjugate	Unconjugated
Immunogen	Recombinant rat D1a dopamine receptor (123 residues with 23 residues near the C-terminus).[Swiss-Prot# P18901]
Form	Liquid
Concentration	1 mg/mL
Purification	Protein A
Storage buffer	tris glycine with 0.15M NaCl
Contains	0.05% sodium azide
Storage Conditions	-20° C, Avoid Freeze/Thaw Cycles
RRID	AB_2261891

Applications	Tested	Dilution	Published
Miscellaneous PubMed (MISC)	-		2 Publications
Immunoprecipitation (IP)	-		1 Publication
Western Blot (WB)	✓	1:200-1:500	1 Publication
Immunocytochemistry (ICC)	✓	1:200-1:1000	
Immunofluorescence (IF)	✓	1:200-1:1000	
Immunohistochemistry (Frozen) (IHC (F))	✓	1:1000	

Product Specific Information

This antibody does not react with human, canine, porcine, sheep, rabbit, or bovine.

Product Images For DRD1 Monoclonal Antibody (SG2-D1a)



DRD1 Antibody (MA1-46024) in WB

Detection of Dopamine Receptor D1b of Sf9 cells transfected with rat D1a using Product # MA1-46024. Lane 1: Sf9-D1a lysate. Lane 2: Sf9-D1b lysate (Please note that these results are similar to those shown in J. Neuroimmunol. 101:170-187 publication.)

4 References

Miscellaneous PubMed (2)

American journal of physiology. Cell physiology

Dopamine regulation of Na⁺-K⁺-ATPase requires the PDZ-2 domain of sodium hydrogen regulatory factor-1 (NHERF-1) in opossum kidney cells.

"MA1-46024 was used in immunoprecipitation and western blot to investigate the effect of NHERF-1 on the modulation of sodium/potassium-ATPase in renal cells"

Authors: Salyer S, Lesousky N, Weinman EJ, Clark BJ, Lederer ED, Khundmiri SJ

Species
Marsupial
Not Applicable

Dilution
Not Cited
Not Cited

Year
2011

Movement disorders : official journal of the Movement Disorder Society

Decreased striatal dopamine receptor binding in primary focal dystonia: a D2 or D3 defect?

"MA1-46024 was used in immunocytochemistry and immunocytochemistry to investigate the relationship between the decrease of D3 receptor expression and primary focal dystonia"

Authors: Karimi M, Moerlein SM, Videen TO, Luedtke RR, Taylor M, Mach RH, Perlmutter JS

Species
Not Applicable

Dilution
Not Cited

Year
2011

Immunoprecipitation (1)

American journal of physiology. Cell physiology

Dopamine regulation of Na⁺-K⁺-ATPase requires the PDZ-2 domain of sodium hydrogen regulatory factor-1 (NHERF-1) in opossum kidney cells.

"MA1-46024 was used in immunoprecipitation and western blot to investigate the effect of NHERF-1 on the modulation of sodium/potassium-ATPase in renal cells"

Authors: Salyer S, Lesousky N, Weinman EJ, Clark BJ, Lederer ED, Khundmiri SJ

Species
Marsupial
Not Applicable

Dilution
Not Cited
Not Cited

Year
2011

Western Blot (1)

American journal of physiology. Cell physiology

Dopamine regulation of Na⁺-K⁺-ATPase requires the PDZ-2 domain of sodium hydrogen regulatory factor-1 (NHERF-1) in opossum kidney cells.

"MA1-46024 was used in immunoprecipitation and western blot to investigate the effect of NHERF-1 on the modulation of sodium/potassium-ATPase in renal cells"

Authors: Salyer S, Lesousky N, Weinman EJ, Clark BJ, Lederer ED, Khundmiri SJ

Species
Marsupial
Not Applicable

Dilution
Not Cited
Not Cited

Year
2011

For Research Use Only. Not for use in diagnostic procedures. Not for resale without express authorization. Products are warranted to operate or perform substantially in conformance with published Product specifications in effect at the time of sale, as set forth in the Production documentation, specifications and/or accompanying package inserts ("Documentation"). No claim of suitability for use in applications regulated by FDA is made. The warranty provided herein is valid only when used by properly trained individuals. Unless otherwise stated in the Documentation, this warranty is limited to one year from date of shipment when the Product is subjected to normal, proper and intended usage. This warranty does not extend to anyone other than the Buyer. Any model or sample furnished to Buyer is merely illustrative of the general type and quality of goods and does not represent that any Product will conform to such model or sample. NO OTHER WARRANTIES, EXPRESS OR IMPLIED, ARE GRANTED INCLUDING WITHOUT LIMITATION, IMPLIED WARRANTIES OF MERCHANTABILITY, FITNESS FOR ANY PARTICULAR PURPOSE, OR NON-INFRINGEMENT. BUYER'S EXCLUSIVE REMEDY FOR NON-CONFORMING PRODUCTS DURING THE WARRANTY PERIOD IS LIMITED TO REPAIR, REPLACEMENT OF OR REFUND FOR THE NON-CONFORMING PRODUCT(S) AT SELLER'S SOLE OPTION. THERE IS NO OBLIGATION TO REPAIR, REPLACE OR REFUND FOR PRODUCTS AS THE RESULT OF (I) ACCIDENT, DISASTER OR EVENT OF FORCE MAJEURE, (II) MISUSE, FAULT OR NEGLIGENCE OF OR BY BUYER, (III) USE OF THE PRODUCTS IN A MANNER FOR WHICH THEY WERE NOT DESIGNED, OR (IV) IMPROPER STORAGE AND HANDLING OF THE PRODUCTS. Unless otherwise expressly stated on the Product or in the documentation accompanying the Product, the Product is intended for research only and is not to be used for any other purpose, including without limitation, unauthorized commercial uses, in vitro diagnostic uses, ex vivo or in vivo therapeutic uses, or any type of consumption by or application to human or animals.