

Prolactin Receptor Monoclonal Antibody (T6)

Product Details	
Size	100 µg
Species Reactivity	Human, Rat
Published Species	Rat, Human
Host/Isotope	Mouse / IgG2a
Class	Monoclonal
Type	Antibody
Clone	T6
Conjugate	Unconjugated
Immunogen	Purified rat liver PRL receptor.
Form	Lyophilized
Concentration	1 mg/mL
Purification	Protein A
Contains	no preservative
Storage Conditions	-20° C, Avoid Freeze/Thaw Cycles
RRID	AB_2171289

Applications	Tested	Dilution	Published
Immunohistochemistry (IHC)	✓	1:25-1:200	1 Publication
Immunocytochemistry (ICC)	✓	5 µg/mL	1 Publication
Western Blot (WB)	✓	1 µg/mL	2 Publications
Immunofluorescence (IF)	✓	1:200	

Product Specific Information

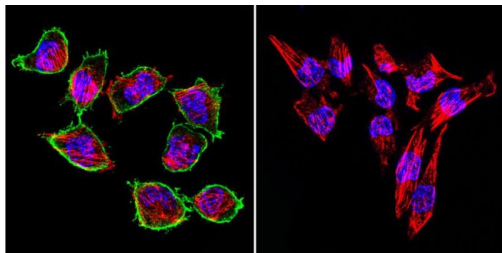
MA1-611 detects prolactin (PRL) receptor in rat and human tissues. This antibody does not cross-react with PRL receptors from other species nor with growth hormone (GH) receptor.

MA1-611 has been successfully used in Western blot, IF, immunohistochemistry (4% PFA fixed tissue), and immunocytochemistry procedures. By Western blot, this antibody detects an ~42 kDa protein representing PRL receptor in NB2 cell lysate. Immunohistochemical staining of PRL receptor in NB2 cells with MA1-611 yields a staining pattern consistent with cytoplasmic vesicular staining. MA1-611 has also been used to inhibit the binding of prolactin to prolactin receptor in vitro.

The MA1-611 immunogen is purified rat liver PRL receptor.

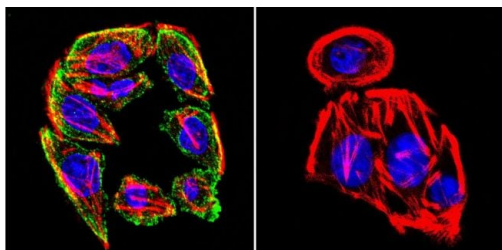
Reconstitute with 100 µL PBS.

Product Images For Prolactin Receptor Monoclonal Antibody (T6)



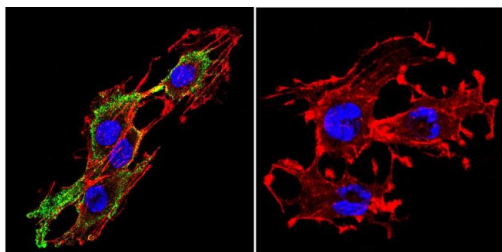
Prolactin Receptor Antibody (MA1-611) in IF

Immunofluorescent analysis of Prolactin Receptor in H-4-II-E Cells. Cells were grown on chamber slides and fixed with formaldehyde prior to staining. Cells were probed without (control) or with a Prolactin Receptor monoclonal antibody (Product # MA1-611) at a dilution of 1:200 overnight at 4 C, washed with PBS and incubated with a DyLight-488 conjugated secondary antibody (Product # 35503). Prolactin Receptor staining (green), F-Actin staining with Phalloidin (red) and nuclei with DAPI (blue) is shown. Images were taken at 60X magnification.



Prolactin Receptor Antibody (MA1-611) in IF

Immunofluorescent analysis of Prolactin Receptor in SW480 Cells. Cells were grown on chamber slides and fixed with formaldehyde prior to staining. Cells were probed without (control) or with a Prolactin Receptor monoclonal antibody (Product # MA1-611) at a dilution of 1:200 overnight at 4 C, washed with PBS and incubated with a DyLight-488 conjugated secondary antibody (Product # 35503). Prolactin Receptor staining (green), F-Actin staining with Phalloidin (red) and nuclei with DAPI (blue) is shown. Images were taken at 60X magnification.



Prolactin Receptor Antibody (MA1-611) in IF

Immunofluorescent analysis of Prolactin Receptor in C6 Cells. Cells were grown on chamber slides and fixed with formaldehyde prior to staining. Cells were probed without (control) or with a Prolactin Receptor monoclonal antibody (Product # MA1-611) at a dilution of 1:200 overnight at 4 C, washed with PBS and incubated with a DyLight-488 conjugated secondary antibody (Product # 35503). Prolactin Receptor staining (green), F-Actin staining with Phalloidin (red) and nuclei with DAPI (blue) is shown. Images were taken at 60X magnification.

[View more figures on thermofisher.com](https://www.thermofisher.com)

4 References

Immunohistochemistry (1)

American journal of physiology. Endocrinology and metabolism

Prolactin secretory rhythm of mated rats induced by a single injection of oxytocin.

"MA1-611 was used in immunohistochemistry to study the effect of oxytocin on prolactin secretory rhythm in rats."

Authors: Egli M,Bertram R,Toporikova N,Sellix MT,Blanco W,Freeman ME

Species

Rat
Not Applicable

Dilution

1:1,000
Not Cited

Year

2006

Immunocytochemistry (1)

American journal of physiology. Endocrinology and metabolism

Prolactin secretory rhythm of mated rats induced by a single injection of oxytocin.

"MA1-611 was used in immunohistochemistry to study the effect of oxytocin on prolactin secretory rhythm in rats."

Authors: Egli M,Bertram R,Toporikova N,Sellix MT,Blanco W,Freeman ME

Species

Rat
Not Applicable

Dilution

1:1,000
Not Cited

Year

2006

Western Blot (2)

Neuropeptides

Hypothesis paper Brain talks with fat--evidence for a hypothalamic-pituitary-adipose axis?

"MA1-611 was used in western blot to investigate the involvement of adipose tissue in hypothalamic-pituitary-adipose axis"

Authors: Schäffler A,Binart N,Schölmerich J,Büchler C

Species

Human

Dilution

Not Cited

Year

2005

The Journal of biological chemistry

Mutational analysis of the ligand-binding domain of the prolactin receptor.

"MA1-611 was used in western blot to perform mutational analysis of prolactin receptor in order to investigate the contributions of different domains to hormone binding"

Authors: Rozakis-Adcock M,Kelly PA

Species

Rat

Dilution

10⁷ cpm:50 ml

Year

1991

For Research Use Only. Not for use in diagnostic procedures. Not for resale without express authorization. Products are warranted to operate or perform substantially in conformance with published Product specifications in effect at the time of sale, as set forth in the Production documentation, specifications and/or accompanying package inserts ("Documentation"). No claim of suitability for use in applications regulated by FDA is made. The warranty provided herein is valid only when used by properly trained individuals. Unless otherwise stated in the Documentation, this warranty is limited to one year from date of shipment when the Product is subjected to normal, proper and intended usage. This warranty does not extend to anyone other than the Buyer. Any model or sample furnished to Buyer is merely illustrative of the general type and quality of goods and does not represent that any Product will conform to such model or sample. NO OTHER WARRANTIES, EXPRESS OR IMPLIED, ARE GRANTED INCLUDING WITHOUT LIMITATION, IMPLIED WARRANTIES OF MERCHANTABILITY, FITNESS FOR ANY PARTICULAR PURPOSE, OR NON-INFRINGEMENT. BUYER'S EXCLUSIVE REMEDY FOR NON-CONFORMING PRODUCTS DURING THE WARRANTY PERIOD IS LIMITED TO REPAIR, REPLACEMENT OF OR REFUND FOR THE NON-CONFORMING PRODUCT(S) AT SELLER'S SOLE OPTION. THERE IS NO OBLIGATION TO REPAIR, REPLACE OR REFUND FOR PRODUCTS AS THE RESULT OF (I) ACCIDENT, DISASTER OR EVENT OF FORCE MAJEURE, (II) MISUSE, FAULT OR NEGLIGENCE OF OR BY BUYER, (III) USE OF THE PRODUCTS IN A MANNER FOR WHICH THEY WERE NOT DESIGNED, OR (IV) IMPROPER STORAGE AND HANDLING OF THE PRODUCTS. Unless otherwise expressly stated on the Product or in the documentation accompanying the Product, the Product is intended for research only and is not to be used for any other purpose, including without limitation, unauthorized commercial uses, in vitro diagnostic uses, ex vivo or in vivo therapeutic uses, or any type of consumption by or application to human or animals.