

CD59 Monoclonal Antibody (1F5)

Product Details	
Size	250 µg
Species Reactivity	Human
Host/Isotope	Mouse / IgG1
Class	Monoclonal
Type	Antibody
Clone	1F5
Conjugate	Unconjugated
Immunogen	Mouse pre-B tumor cells
Form	Liquid
Concentration	1 mg/mL
Purification	Protein G
Storage buffer	PBS
Contains	0.02% sodium azide
Storage Conditions	4° C
RRID	AB_1073175

Applications	Tested Dilution	Publications
Flow Cytometry (Flow)	1 µg/1 million cells	-

Product Specific Information

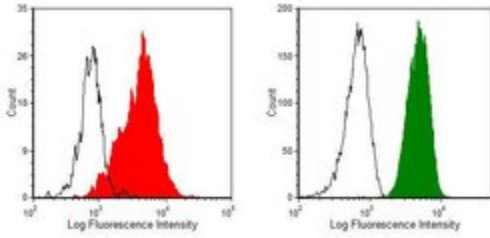
MA1-70058 detects CD59 in human samples.

MA1-70058 has been successfully used in flow cytometry procedures.

The MA1-70058 immunogen is mouse pre-B tumor cells.

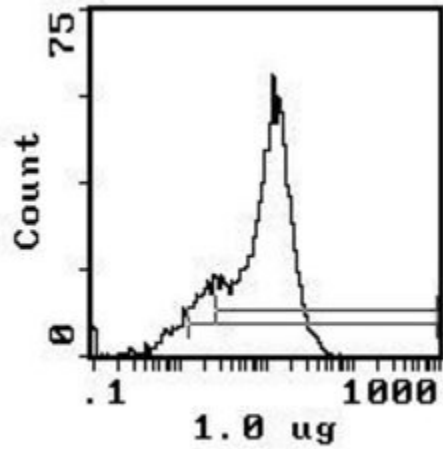
Store at 4°C. For long term storage, aliquot and freeze unused portion at -20°C in single use volumes. Avoid freeze/thaw cycles.

Product Images For CD59 Monoclonal Antibody (1F5)



CD59 Antibody (MA1-70058) in Flow

Flow cytometric analysis of human peripheral blood lymphocytes (left) or red blood cells (right) were stained using a CD59/Protectin monoclonal antibody (Product # MA1-70058) (filled histogram) or mouse IgG1 isotype control (open histogram).



CD59 Antibody (MA1-70058) in Flow

Flow cytometric analysis of red blood cells staining using a CD59/Protectin monoclonal antibody (Product # MA1-70058) at a 1.0 $\mu\text{g}/10^6$ cells dilution.

For Research Use Only. Not for use in diagnostic procedures. Not for resale without express authorization. Products are warranted to operate or perform substantially in conformance with published Product specifications in effect at the time of sale, as set forth in the Production documentation, specifications and/or accompanying package inserts ("Documentation"). No claim of suitability for use in applications regulated by FDA is made. The warranty provided herein is valid only when used by properly trained individuals. Unless otherwise stated in the Documentation, this warranty is limited to one year from date of shipment when the Product is subjected to normal, proper and intended usage. This warranty does not extend to anyone other than the Buyer. Any model or sample furnished to Buyer is merely illustrative of the general type and quality of goods and does not represent that any Product will conform to such model or sample. NO OTHER WARRANTIES, EXPRESS OR IMPLIED, ARE GRANTED INCLUDING WITHOUT LIMITATION, IMPLIED WARRANTIES OF MERCHANTABILITY, FITNESS FOR ANY PARTICULAR PURPOSE, OR NON INFRINGEMENT. BUYER'S EXCLUSIVE REMEDY FOR NON-CONFORMING PRODUCTS DURING THE WARRANTY PERIOD IS LIMITED TO REPAIR, REPLACEMENT OF OR REFUND FOR THE NON-CONFORMING PRODUCT(S) AT SELLER'S SOLE OPTION. THERE IS NO OBLIGATION TO REPAIR, REPLACE OR REFUND FOR PRODUCTS AS THE RESULT OF (I) ACCIDENT, DISASTER OR EVENT OF FORCE MAJEURE, (II) MISUSE, FAULT OR NEGLIGENCE OF OR BY BUYER, (III) USE OF THE PRODUCTS IN A MANNER FOR WHICH THEY WERE NOT DESIGNED, OR (IV) IMPROPER STORAGE AND HANDLING OF THE PRODUCTS. Unless otherwise expressly stated on the Product or in the documentation accompanying the Product, the Product is intended for research only and is not to be used for any other purpose, including without limitation, unauthorized commercial uses, in vitro diagnostic uses, ex vivo or in vivo therapeutic uses, or any type of consumption by or application to human or animals.