

# HIV1 Tat Monoclonal Antibody (N1)

## Product Details

Size	100 µg
Species Reactivity	Virus
Host/Isotype	Mouse / IgG3
Class	Monoclonal
Type	Antibody
Clone	N1
Conjugate	Unconjugated
Immunogen	Recombinant Tat protein of HIV-1 BH10 purified from E. coli
Form	Liquid
Concentration	1 mg/mL
Purification	Protein G
Storage buffer	PBS, pH 7.4
Contains	0.1% sodium azide
Storage conditions	-20° C, Avoid Freeze/Thaw Cycles
RRID	AB_962127

Applications	Tested Dilution	Publications
Western Blot (WB)	2 µg/mL	-
ELISA (ELISA)	0.08-0.4 µg/mL	-
ChIP assay (ChIP)	1-3 µL	-

## Product Specific Information

This antibody reacts with HIV-1 Tat HXB2, BH10, IIB and HAN strains. It has been mapped to amino acids 71-81 (KQPASQPRGDP - B subtype a.a. consensus).

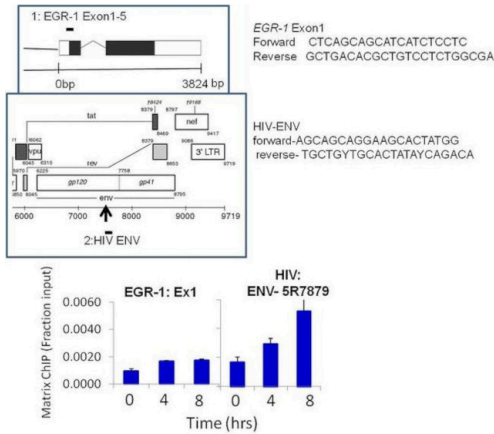
MA1-71512 can be used for chromatin immunoprecipitation (ChIP) analysis of HIV1 Tat.

This clone may also be referred to as N1 (Tat N1).

## Product Images For HIV1 Tat Monoclonal Antibody (N1)

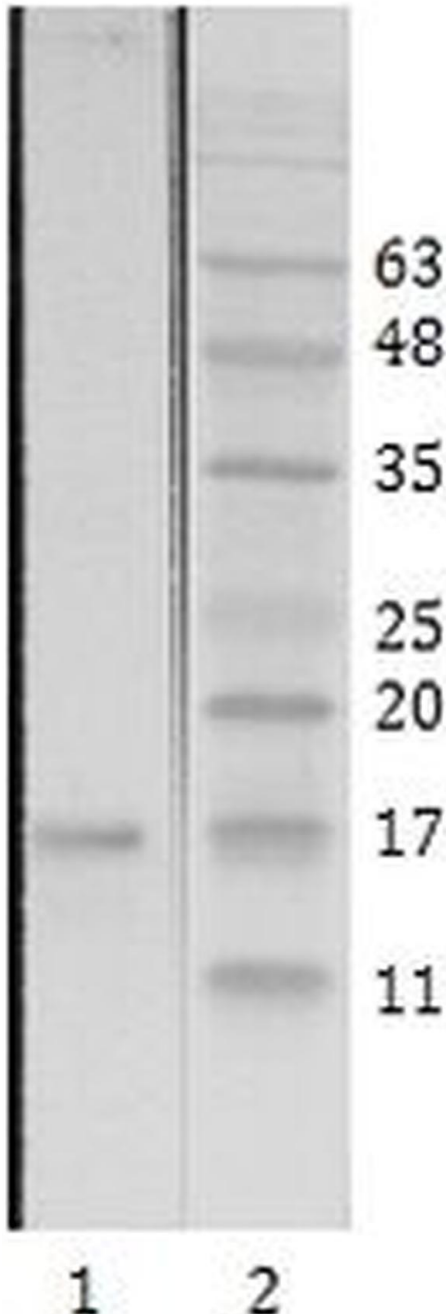
### HIV1 Tat Antibody (MA1-71512) in ChIP

Chromatin immunoprecipitation analysis of HIV1 Tat was performed using cross-linked chromatin from Human 5A8 J-lat T lymphocytes culture latently infected with HIV1 and treated with 10 µg/mL PHA (phytohemagglutinin) for 0, 4, and 8 hours. Immunoprecipitation was performed using a multiplex microplate Matrix ChIP assay (see reference for Matrix ChIP protocol: <http://www.ncbi.nlm.nih.gov/pubmed/22098709>) with 1.0 µL/100 µL well volume of a Tat monoclonal antibody (Product # MA1-71512). Chromatin aliquots from ~1 x 10<sup>5</sup> cells were used per ChIP pull-down. Quantitative PCR data were done in quadruplicate using 1 µL of eluted DNA in 2 µL SYBR real-time PCR reactions containing primers shown to amplify exon-1 of the EGR1 gene or HIV ENV gene. PCR calibration curves were generated for each primer pair from a dilution series of sheared total genomic DNA. Quantitation of immunoprecipitated chromatin is presented as signal relative to the total amount of input chromatin. Results represent the mean +/- SEM for three experiments. Schematic representations of the EGR-1 and HIV1 ENV locus are shown above the data where boxes represent exons (black boxes = translated regions, white boxes = untranslated regions), the zigzag line represents an intron, and the straight line represents upstream sequence. Regions amplified by the primers are represented by black bars. Data courtesy of the Innovators Program.



### HIV1 Tat Antibody (MA1-71512) in WB

Western blot analysis of 100 ng of recombinant HIV-1 Tat (B subtype) (Lane 1) and a protein ladder (Lane 2) using a HIV1 Tat monoclonal antibody (Product # MA1-71512) at a dilution of 2 µg/mL.



For Research Use Only. Not for use in diagnostic procedures. Not for resale without express authorization. Products are warranted to operate or perform substantially in conformance with published Product specifications in effect at the time of sale, as set forth in the Production documentation, specifications and/or accompanying package inserts ("Documentation"). No claim of suitability for use in applications regulated by FDA is made. The warranty provided herein is valid only when used by properly trained individuals. Unless otherwise stated in the Documentation, this warranty is limited to one year from date of shipment when the Product is subjected to normal, proper and intended usage. This warranty does not extend to anyone other than the Buyer. Any model or sample furnished to Buyer is merely illustrative of the general type and quality of goods and does not represent that any Product will conform to such model or sample. NO OTHER WARRANTIES, EXPRESS OR IMPLIED, ARE GRANTED INCLUDING WITHOUT LIMITATION, IMPLIED WARRANTIES OF MERCHANTABILITY, FITNESS FOR ANY PARTICULAR PURPOSE, OR NON INFRINGEMENT. BUYER'S EXCLUSIVE REMEDY FOR NON-CONFORMING PRODUCTS DURING THE WARRANTY PERIOD IS LIMITED TO REPAIR, REPLACEMENT OF OR REFUND FOR THE NON-CONFORMING PRODUCT(S) AT SELLER'S SOLE OPTION. THERE IS NO OBLIGATION TO REPAIR, REPLACE OR REFUND FOR PRODUCTS AS THE RESULT OF (I) ACCIDENT, DISASTER OR EVENT OF FORCE MAJEURE, (II) MISUSE, FAULT OR NEGLIGENCE OF OR BY BUYER, (III) USE OF THE PRODUCTS IN A MANNER FOR WHICH THEY WERE NOT DESIGNED, OR (IV) IMPROPER STORAGE AND HANDLING OF THE PRODUCTS. Unless otherwise expressly stated on the Product or in the documentation accompanying the Product, the Product is intended for research only and is not to be used for any other purpose, including without limitation, unauthorized commercial uses, in vitro diagnostic uses, ex vivo or in vivo therapeutic uses, or any type of consumption by or application to human or animals.