

# GCAP1 Monoclonal Antibody (G2)

Product Details	
Size	100 µg
Species Reactivity	Bovine, Human, Non-human primate
Published Species	Bovine, Mouse
Host/Isotype	Mouse / IgG2a
Class	Monoclonal
Type	Antibody
Clone	G2
Conjugate	Unconjugated
Immunogen	Bacterial expressed full length GCAP-1.
Form	Liquid
Concentration	1 mg/mL
Purification	Protein A
Storage buffer	PBS with 1mg/mL BSA
Contains	0.05% sodium azide
Storage conditions	-20° C, Avoid Freeze/Thaw Cycles
RRID	AB_2115533

Applications	Tested Dilution	Publications
Western Blot (WB)	1 µg/mL	3 Publications
Immunoprecipitation (IP)	-	2 Publications
Neutralization (Neu)	-	1 Publication

## Product Specific Information

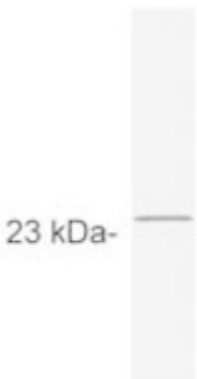
MA1-724 detects GCAP-1 from human, non-human primate and bovine samples. This antibody is specific for GCAP-1 and does not react with other isotypes.

MA1-724 has been successfully used in Western blot procedures. By Western blot, this antibody detects a ~23 kDa protein representing GCAP-1 protein on bovine rod outer segment membranes.

The MA1-724 immunogen is bacterial expressed full length GCAP-1.

Product Images For GCAP1 Monoclonal Antibody (G2)

Fig. 1



**GCAP1 Antibody (MA1-724) in WB**

Western blot detection of GCAP-1 on bovine rod outer segment lysate using Product # MA1-724

## 6 References

### Western Blot (3)

The Journal of physiology

#### Prolonged illumination up-regulates arrestin and two guanylate cyclase activating proteins: a novel mechanism for light adaptation.

"MA1-724 was used in Western Blotting to study gene expression changes associated with light adaptation in vertebrate photoreceptors."

Authors: Codega P, Della Santina L, Gargini C, Bedolla DE, Subkhankulova T, Livesey FJ, Cervetto L, Torre V

**Species**  
Mouse

**Dilution**  
Not Cited

**Year**  
2009

Proceedings of the National Academy of Sciences of the United States of America

#### Phosphorylation of photolyzed rhodopsin is calcium-insensitive in retina permeabilized by alpha-toxin.

"MA1-724 was used in western blot to investigate the influence of calcium on rhodopsin phosphorylation in retina"

Authors: Otto-Bruc AE, Fariss RN, Van Hooser JP, Palczewski K

**Species**  
Bovine

**Dilution**  
1:5,000, 1:10,000

**Year**  
1998

[View more WB references on thermofisher.com](#)

### Immunoprecipitation (2)

The Journal of biological chemistry

#### Conformational changes in guanylyl cyclase-activating protein 1 (GCAP1) and its tryptophan mutants as a function of calcium concentration.

"MA1-724 was used in immunoprecipitation to investigate the important roles of Trp residues in the function of GCAP1 and its conformational changes mediated by calcium binding"

Authors: Sokal I, Otto-Bruc AE, Surgucheva I, Verlinde CL, Wang CK, Baehr W, Palczewski K

**Species**  
Bovine

**Dilution**  
Not Cited

**Year**  
1999

Biochemistry

#### Functional reconstitution of photoreceptor guanylate cyclase with native and mutant forms of guanylate cyclase-activating protein 1.

"MA1-724 was used in immunoprecipitation to investigate the mechanism for the restoration of the functions of retGC1 by GCAP1"

Authors: Otto-Bruc A, Buczylo J, Surgucheva I, Subbaraya I, Rudnicka-Nawrot M, Crabb JW, Arendt A, Hargrave PA, Baehr W, Palczewski K

**Species**  
Bovine

**Dilution**  
Not Cited

**Year**  
1997

### More applications with references on thermofisher.com

### Neu (1)

For Research Use Only. Not for use in diagnostic procedures. Not for resale without express authorization. Products are warranted to operate or perform substantially in conformance with published Product specifications in effect at the time of sale, as set forth in the Production documentation, specifications and/or accompanying package inserts ("Documentation"). No claim of suitability for use in applications regulated by FDA is made. The warranty provided herein is valid only when used by properly trained individuals. Unless otherwise stated in the Documentation, this warranty is limited to one year from date of shipment when the Product is subjected to normal, proper and intended usage. This warranty does not extend to anyone other than the Buyer. Any model or sample furnished to Buyer is merely illustrative of the general type and quality of goods and does not represent that any Product will conform to such model or sample. NO OTHER WARRANTIES, EXPRESS OR IMPLIED, ARE GRANTED INCLUDING WITHOUT LIMITATION, IMPLIED WARRANTIES OF MERCHANTABILITY, FITNESS FOR ANY PARTICULAR PURPOSE, OR NON INFRINGEMENT. BUYER'S EXCLUSIVE REMEDY FOR NON-CONFORMING PRODUCTS DURING THE WARRANTY PERIOD IS LIMITED TO REPAIR, REPLACEMENT OF OR REFUND FOR THE NON-CONFORMING PRODUCT(S) AT SELLER'S SOLE OPTION. THERE IS NO OBLIGATION TO REPAIR, REPLACE OR REFUND FOR PRODUCTS AS THE RESULT OF (I) ACCIDENT, DISASTER OR EVENT OF FORCE MAJEURE, (II) MISUSE, FAULT OR NEGLIGENCE OF OR BY BUYER, (III) USE OF THE PRODUCTS IN A MANNER FOR WHICH THEY WERE NOT DESIGNED, OR (IV) IMPROPER STORAGE AND HANDLING OF THE PRODUCTS. Unless otherwise expressly stated on the Product or in the documentation accompanying the Product, the Product is intended for research only and is not to be used for any other purpose, including without limitation, unauthorized commercial uses, in vitro diagnostic uses, ex vivo or in vivo therapeutic uses, or any type of consumption by or application to human or animals.