

Estrogen Receptor alpha Monoclonal Antibody (6F11)

Product Details

Size	100 µL
Species Reactivity	Human, Mouse, Rat
Published Species	Rabbit, Rat, Cat, Human, Mouse
Host/Isotype	Mouse / IgG1
Class	Monoclonal
Type	Antibody
Clone	6F11
Conjugate	Unconjugated
Immunogen	Recombinant estrogen receptor protein (alpha form)
Form	Liquid
Concentration	Conc. Not Determined
Storage buffer	tissue culture supernatant
Contains	0.09% sodium azide
Storage conditions	Store at 4°C short term. For long term storage, store at -20°C, avoiding freeze/thaw cycles.
RRID	AB_930763

Applications	Tested Dilution	Publications
Western Blot (WB)	1:50-1:1,000	2 Publications
Immunohistochemistry (IHC)	-	27 Publications
Immunohistochemistry (Paraffin) (IHC (P))	1:40-1:80	7 Publications
Immunohistochemistry (Frozen) (IHC (F))	1:40-1:60	-
Immunocytochemistry (ICC/IF)	1:100	1 Publication
Gel Shift (GS)	-	1 Publication

Product Specific Information

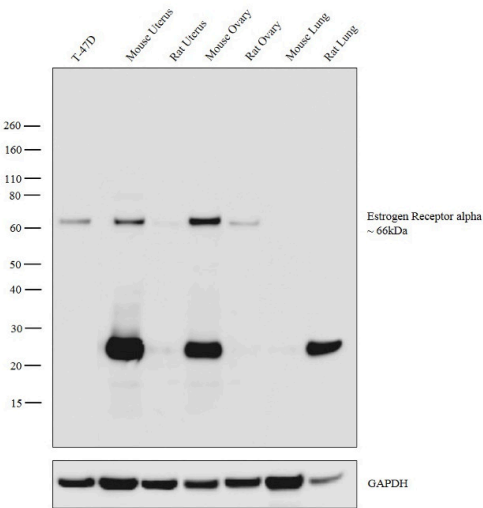
Heat-mediated antigen retrieval using a sodium citrate buffer (pH 6.0) is recommended for the staining of paraffin sections. A suggested positive control for this product is breast carcinoma.

Mouse anti Human estrogen alpha antibody, clone 6F11 recognizes the human estrogen receptor alpha chain (ERalpha), also known as the estradiol receptor or nuclear receptor subfamily 3 group A member 1.

Product Images For Estrogen Receptor alpha Monoclonal Antibody (6F11)

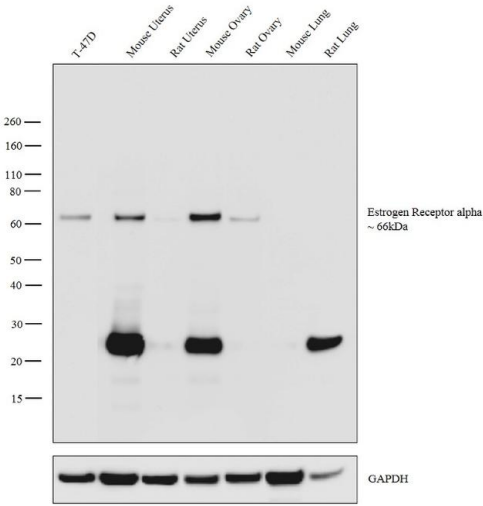
Estrogen Receptor alpha Antibody (MA1-80216)

Antibody specificity was demonstrated by detection of differential basal expression of the target across cell lines owing to their inherent genetic constitution. Relative expression of Estrogen Receptor alpha was observed in all cell lines and tissues tested in comparison to Mouse Brain and Mouse Lung using product (Product # MA1-80216) in western blot. {RE}



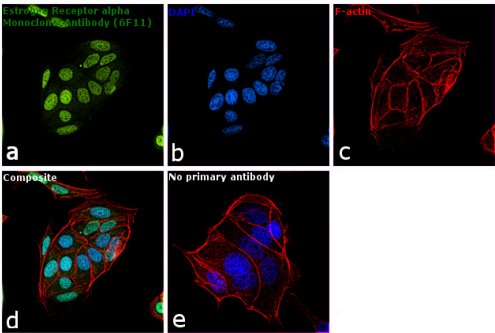
Estrogen Receptor alpha Antibody (MA1-80216) in WB

Western blot analysis was performed on modified whole cell extracts (1% SDS) (30 µg lysate) of T-47D (Lane 1), tissue extracts of Mouse Uterus (Lane 2), Rat Uterus (Lane 3), Mouse Ovary (Lane 4), Rat Ovary (Lane 5), Mouse Lung (Lane 6) and Rat Lung (Lane 7). The blot was probed with Anti-Estrogen Receptor alpha Monoclonal Antibody (Product # MA1-80216, 1:1000 dilution) and detected by chemiluminescence using Goat anti-Mouse IgG (H+L) Superclonal™ Secondary Antibody, HRP conjugate (Product # A28177, 1:4000 dilution). A 66kDa band corresponding to HSP60 was observed across all cell lines and tissues tested except for Mouse Lung and Rat Lung. A band at 25kDa was also observed in certain tissue extracts.



Estrogen Receptor alpha Antibody (MA1-80216) in ICC/IF

Immunofluorescence analysis of Estrogen Receptor alpha was performed using 70% confluent log phase MCF7 cells. The cells were fixed with 4% paraformaldehyde for 10 minutes, permeabilized with 0.1% Triton™ X-100 for 15 minutes, and blocked with 1% BSA for 1 hour at room temperature. The cells were labeled with Estrogen Receptor alpha Monoclonal Antibody (6F11) (Product # MA1-80216) at 1:100 in 0.1% BSA, incubated at 4 degree Celsius overnight and then labeled with Goat anti-Mouse IgG (H+L) Superclonal™ Secondary Antibody, Alexa Fluor® 488 conjugate (Product # A28175) at a dilution of 1:2000 for 45 minutes at room temperature (Panel a: green). Nuclei (Panel b: blue) were stained with ProLong™ Diamond Antifade Mountant with DAPI (Product # P36962). F-actin (Panel c: red) was stained with Rhodamine Phalloidin (Product # R415). Panel d represents the merged image showing nucleus localization. Panel e represents control cells with no primary antibody to assess background. The images were captured at 60X magnification.



View more figures on thermofisher.com

Western Blot (2)

<p>Nucleic acids research</p> <p>Unraveling the regulatory connections between two controllers of breast cancer cell fate.</p> <p>"MA1-80216 was used in western blot to study the roles of ER-alpha and GATA3 in regulating the fate of breast cancer cells"</p> <p>Authors: Lee J,Tiwari A,Shum V,Mills GB,Mancini MA,Igoshin OA,Balázsi G</p>	<p>Year 2014</p> <p>Species Human</p>
<p>Molecular and cellular endocrinology</p> <p>Characterization of mammary tumor cell lines from wild type and vitamin D3 receptor knockout mice.</p> <p>"MA1-80216 was used in western blot to characterize mammary tumor cell lines from wild type and vitamin D3 receptor knockout mice"</p> <p>Authors: Zinser GM,McEleney K,Welsh J</p>	<p>Year 2003</p> <p>Species Mouse</p>

Immunohistochemistry (27)

<p>Journal of Cancer</p> <p>Comparative Efficacy of AZD9496 and Fulvestrant on the Growth of Pituitary Adenoma via Blocking JAK2/STAT5B Pathway.</p> <p>"Published figure using Estrogen Receptor alpha monoclonal antibody (Product # MA1-80216) in Immunohistochemistry"</p> <p>Authors: Liu Q,Shen Y,Xiong Y,Bai J,Zhang Y,Li C</p>	<p>Year 2023</p>
<p>Frontiers in endocrinology</p> <p>Enhanced anti-cancer effects of oestrogen and progesterone co-therapy against colorectal cancer in males.</p> <p>"Published figure using Estrogen Receptor alpha monoclonal antibody (Product # MA1-80216) in Immunohistochemistry"</p> <p>Authors: Mahbub AA,Aslam A,Elzubier ME,El-Boshy M,Abdelghany AH,Ahmad J,Idris S,Almaimani R,Alsaegh A,El-Readi MZ,Baghdadi MA,Refaat B</p>	<p>Year 2022</p>

[View more IHC references on thermofisher.com](#)

More applications with references on thermofisher.com

- IHC (P) (7)
- ICC/IF (1)
- GS (1)

For Research Use Only. Not for use in diagnostic procedures. Not for resale without express authorization. Products are warranted to operate or perform substantially in conformance with published Product specifications in effect at the time of sale, as set forth in the Production documentation, specifications and/or accompanying package inserts ("Documentation"). No claim of suitability for use in applications regulated by FDA is made. The warranty provided herein is valid only when used by properly trained individuals. Unless otherwise stated in the Documentation, this warranty is limited to one year from date of shipment when the Product is subjected to normal, proper and intended usage. This warranty does not extend to anyone other than the Buyer. Any model or sample furnished to Buyer is merely illustrative of the general type and quality of goods and does not represent that any Product will conform to such model or sample. NO OTHER WARRANTIES, EXPRESS OR IMPLIED, ARE GRANTED INCLUDING WITHOUT LIMITATION, IMPLIED WARRANTIES OF MERCHANTABILITY, FITNESS FOR ANY PARTICULAR PURPOSE, OR NON INFRINGEMENT. BUYER'S EXCLUSIVE REMEDY FOR NON-CONFORMING PRODUCTS DURING THE WARRANTY PERIOD IS LIMITED TO REPAIR, REPLACEMENT OF OR REFUND FOR THE NON-CONFORMING PRODUCT(S) AT SELLER'S SOLE OPTION. THERE IS NO OBLIGATION TO REPAIR, REPLACE OR REFUND FOR PRODUCTS AS THE RESULT OF (I) ACCIDENT, DISASTER OR EVENT OF FORCE MAJEURE, (II) MISUSE, FAULT OR NEGLIGENCE OF OR BY BUYER, (III) USE OF THE PRODUCTS IN A MANNER FOR WHICH THEY WERE NOT DESIGNED, OR (IV) IMPROPER STORAGE AND HANDLING OF THE PRODUCTS. Unless otherwise expressly stated on the Product or in the documentation accompanying the Product, the Product is intended for research only and is not to be used for any other purpose, including without limitation, unauthorized commercial uses, in vitro diagnostic uses, ex vivo or in vivo therapeutic uses, or any type of consumption by or application to human or animals.