

# CRALBP Monoclonal Antibody (B2)

Product Details	
Size	100 µg
Species Reactivity	Bovine, Human, Mouse, Non-human primate, Rat
Published Species	Rat, Mouse, Human
Host/Isotope	Mouse / IgG1
Class	Monoclonal
Type	Antibody
Clone	B2
Conjugate	Unconjugated
Immunogen	Human recombinant CRALBP.
Form	Liquid
Concentration	1 mg/mL
Purification	Protein A
Storage buffer	PBS with 1mg/mL BSA
Contains	0.05% sodium azide
Storage Conditions	-20° C, Avoid Freeze/Thaw Cycles
RRID	AB_2178528

Applications	Tested Dilution	Publications
Flow Cytometry (Flow)	Assay Dependent	1 Publication
Immunofluorescence (IF)	1 µg/mL	4 Publications
Immunohistochemistry (Frozen) (IHC (F))	1 µg/mL	-
Immunoprecipitation (IP)	Assay dependent	-
Western Blot (WB)	0.02 µg/mL	3 Publications
Immunocytochemistry (ICC)	-	8 Publications
Immunohistochemistry (IHC)	-	7 Publications
Immunohistochemistry (Paraffin) (IHC (P))	-	1 Publication
Miscellaneous PubMed (Misc)	-	3 Publications

## Product Specific Information

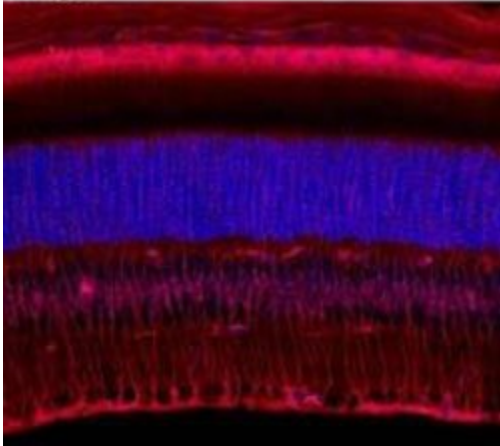
MA1-813 detects CRALBP protein in bovine, human, mouse, non-human primate and rat samples.

MA1-813 has successfully been used in Western blot, immunohistochemistry, immunoprecipitation, and immunofluorescence procedures. By Western blot, this antibody detects a 37 kDa protein representing human recombinant CRALBP.

The MA1-813 immunogen is purified human recombinant CRALBP.

## Product Images For CRALBP Monoclonal Antibody (B2)

Fig. 1



### CRALBP Antibody (MA1-813) in IF

Immunostaining of CRALBP in frozen mouse retina sections using Product # MA1-813.

[View more figures on thermofisher.com](#)

## 27 References

### Immunohistochemistry (Paraffin) (1)

Molecular therapy : the journal of the American Society of Gene Therapy

#### Systemic Injection of RPE65-Programmed Bone Marrow-Derived Cells Prevents Progression of Chronic Retinal Degeneration.

"MA1813 was used in immunohistochemistry - paraffin section to evaluate the efficacy of systemically administered RPE65-programmed bone marrow-derived cells to prevent visual loss in a mouse model of age-related macular degeneration"

Authors: Qi X,Pay SL,Yan Y,Thomas J,Lewin AS,Chang LJ,Grant MB,Boulton ME

**Species**  
Mouse

**Dilution**  
Not Cited

**Year**  
2017

### Immunocytochemistry (8)

Scientific reports

#### Rescue of the MERTK phagocytic defect in a human iPSC disease model using translational read-through inducing drugs.

"MA1-813 was used in Immunocytochemistry to confirm the usefulness of induced pluripotent stem cell derived disease specific models in investigating the pathogenesis, and screening potential treatments for these rare blinding disorders."

Authors: Ramsden CM,Nommiste B,R Lane A,Carr AF,Powner MB,J K Smart M,Chen LL,Muthiah MN,Webster AR, Moore AT,Cheetham ME,da Cruz L,Coffey PJ

**Species**  
Human

**Dilution**  
1:200

**Year**  
2017

Stem cells translational medicine

#### Directing Differentiation of Pluripotent Stem Cells Toward Retinal Pigment Epithelium Lineage.

"MA1813 was used in immunocytochemistry to propose a method for deriving homogeneous retinal pigment epithelium populations using an adherent, monolayer system and defined xeno-free media and matrices"

Authors: Choudhary P,Booth H,Gutteridge A,Surmacz B,Louca I,Steer J,Kerby J,Whiting PJ

**Species**  
Human

**Dilution**  
Not Cited

**Year**  
2017

[View more ICC references on thermofisher.com](#)

## Immunofluorescence (4)

Oncotarget

### Features specific to retinal pigment epithelium cells derived from three-dimensional human embryonic stem cell cultures - a new donor for cell therapy.

"MA1-813 was used in immunocytochemistry and immunohistochemistry to characterize retinal pigment epithelium cells derived from three-dimensional human embryonic stem cell cultures"

Authors: Wu W,Zeng Y,Li Z,Li Q,Xu H,Yin ZQ

**Species**  
Human  
Not Applicable

**Dilution**  
1:400  
Not Cited

**Year**  
2016

[View more IF references on thermofisher.com](#)

## More applications with references on thermofisher.com

Misc (3)

WB (3)

IHC (7)

Flow (1)

For Research Use Only. Not for use in diagnostic procedures. Not for resale without express authorization. Products are warranted to operate or perform substantially in conformance with published Product specifications in effect at the time of sale, as set forth in the Production documentation, specifications and/or accompanying package inserts ("Documentation"). No claim of suitability for use in applications regulated by FDA is made. The warranty provided herein is valid only when used by properly trained individuals. Unless otherwise stated in the Documentation, this warranty is limited to one year from date of shipment when the Product is subjected to normal, proper and intended usage. This warranty does not extend to anyone other than the Buyer. Any model or sample furnished to Buyer is merely illustrative of the general type and quality of goods and does not represent that any Product will conform to such model or sample. NO OTHER WARRANTIES, EXPRESS OR IMPLIED, ARE GRANTED INCLUDING WITHOUT LIMITATION, IMPLIED WARRANTIES OF MERCHANTABILITY, FITNESS FOR ANY PARTICULAR PURPOSE, OR NON INFRINGEMENT. BUYER'S EXCLUSIVE REMEDY FOR NON-CONFORMING PRODUCTS DURING THE WARRANTY PERIOD IS LIMITED TO REPAIR, REPLACEMENT OF OR REFUND FOR THE NON-CONFORMING PRODUCT(S) AT SELLER'S SOLE OPTION. THERE IS NO OBLIGATION TO REPAIR, REPLACE OR REFUND FOR PRODUCTS AS THE RESULT OF (I) ACCIDENT, DISASTER OR EVENT OF FORCE MAJEURE, (II) MISUSE, FAULT OR NEGLIGENCE OF OR BY BUYER, (III) USE OF THE PRODUCTS IN A MANNER FOR WHICH THEY WERE NOT DESIGNED, OR (IV) IMPROPER STORAGE AND HANDLING OF THE PRODUCTS. Unless otherwise expressly stated on the Product or in the documentation accompanying the Product, the Product is intended for research only and is not to be used for any other purpose, including without limitation, unauthorized commercial uses, in vitro diagnostic uses, ex vivo or in vivo therapeutic uses, or any type of consumption by or application to human or animals.