

# C5AR1 Monoclonal Antibody (10/92)

Product Details	
Size	250 µg
Species Reactivity	Mouse
Host/Isotope	Rat / IgG2a
Class	Monoclonal
Type	Antibody
Clone	10/92
Conjugate	Unconjugated
Immunogen	RBL-2H3 transfected cells expressing murine C5aR.
Form	Liquid
Concentration	1 mg/mL
Purification	Protein G
Storage buffer	PBS, pH 7.4
Contains	0.09% sodium azide
Storage Conditions	4°C or -20°C if preferred
RRID	AB_2067293

Applications	Tested Dilution	Publications
Flow Cytometry (Flow)	1:50-1:100	-
Immunohistochemistry (Frozen) (IHC (F))	Assay Dependent	-

## Product Specific Information

For FACS analysis, use 10 µL of the suggested working dilution to label 1x10<sup>6</sup> cells in 100 µL.

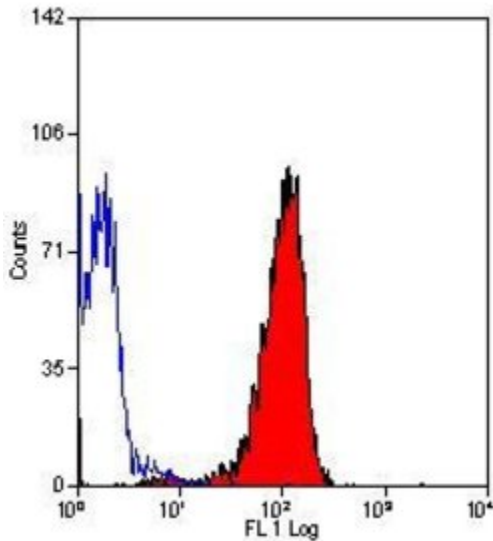
Rat anti Mouse CD88 antibody, clone 10/92 recognizes murine CD88, a 45 kDa G-protein coupled cell surface receptor, otherwise known as C5aR.

Rat anti Mouse CD88 antibody, clone 10/92 recognizes murine CD88, a 45 kDa G-protein coupled cell surface receptor, otherwise known as C5aR.

## Product Images For C5AR1 Monoclonal Antibody (10/92)

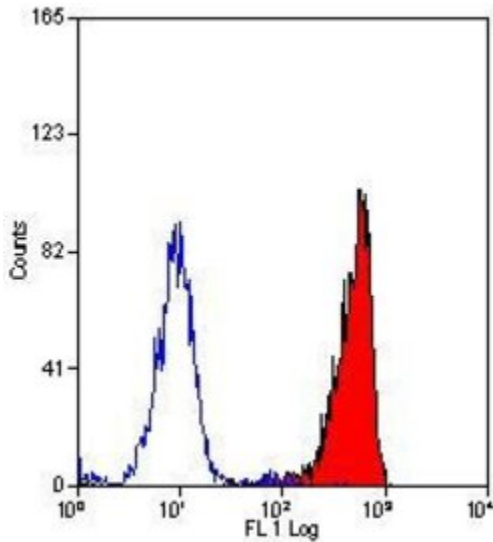
### C5AR1 Antibody (MA1-81763) in Flow

Flow cytometric analysis of mouse peripheral blood granulocytes using a CD88 /C5R1 monoclonal antibody (Product # MA1-81763)



### C5AR1 Antibody (MA1-81763) in Flow

Flow cytometric analysis of mouse peripheral blood granulocytes using a CD88 /C5R1 monoclonal antibody (Product # MA1-81763)



For Research Use Only. Not for use in diagnostic procedures. Not for resale without express authorization. Products are warranted to operate or perform substantially in conformance with published Product specifications in effect at the time of sale, as set forth in the Production documentation, specifications and/or accompanying package inserts ("Documentation"). No claim of suitability for use in applications regulated by FDA is made. The warranty provided herein is valid only when used by properly trained individuals. Unless otherwise stated in the Documentation, this warranty is limited to one year from date of shipment when the Product is subjected to normal, proper and intended usage. This warranty does not extend to anyone other than the Buyer. Any model or sample furnished to Buyer is merely illustrative of the general type and quality of goods and does not represent that any Product will conform to such model or sample. NO OTHER WARRANTIES, EXPRESS OR IMPLIED, ARE GRANTED INCLUDING WITHOUT LIMITATION, IMPLIED WARRANTIES OF MERCHANTABILITY, FITNESS FOR ANY PARTICULAR PURPOSE, OR NON INFRINGEMENT. BUYER'S EXCLUSIVE REMEDY FOR NON-CONFORMING PRODUCTS DURING THE WARRANTY PERIOD IS LIMITED TO REPAIR, REPLACEMENT OF OR REFUND FOR THE NON-CONFORMING PRODUCT(S) AT SELLER'S SOLE OPTION. THERE IS NO OBLIGATION TO REPAIR, REPLACE OR REFUND FOR PRODUCTS AS THE RESULT OF (I) ACCIDENT, DISASTER OR EVENT OF FORCE MAJEURE, (II) MISUSE, FAULT OR NEGLIGENCE OF OR BY BUYER, (III) USE OF THE PRODUCTS IN A MANNER FOR WHICH THEY WERE NOT DESIGNED, OR (IV) IMPROPER STORAGE AND HANDLING OF THE PRODUCTS. Unless otherwise expressly stated on the Product or in the documentation accompanying the Product, the Product is intended for research only and is not to be used for any other purpose, including without limitation, unauthorized commercial uses, in vitro diagnostic uses, ex vivo or in vivo therapeutic uses, or any type of consumption by or application to human or animals.