

CYP1A1/CYP1A2 Monoclonal Antibody (MC1)

Product Details	
Size	100 µL
Species	Human, Mouse, Non-human primate, Rat
Expression System	Mouse / IgG1
Class	Monoclonal
Type	Antibody
Clone	MC1
Conjugate	Unconjugated
Immunogen	3-methylcholanthrene induced rat cytochrome P450 protein.
Form	Liquid
Concentration	Conc. Not Determined
Storage buffer	ascites
Contains	0.05% sodium azide
Storage Conditions	-20° C, Avoid Freeze/Thaw Cycles
RRID	AB_1073970

Applications	Tested Dilution	Publications
Immunocytochemistry (ICC)	1:20-1:200	-
Immunofluorescence (IF)	1:20-1:200	-
Immunohistochemistry (Paraffin) (IHC (P))	1:50-1:200	-
Western Blot (WB)	1:500	-

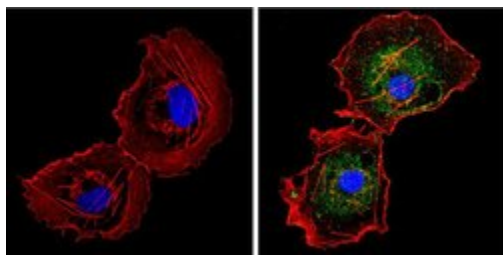
Product Specific Information

MA3-036 detects Cytochrome P450 1A1/1A2 from human, primate, rat and mouse samples.

MA3-036 has been successfully used in Western blot, immunocytochemistry, immunofluorescence and immunohistochemistry (paraffin) applications. By Western blot, this antibody detects a ~58 kDa band representing Cytochrome P450 1A1/1A2.

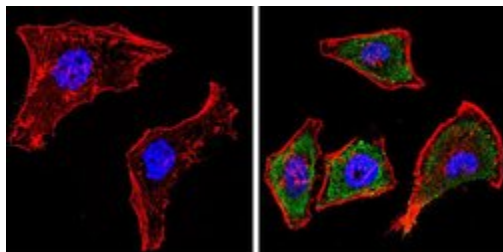
The MA3-036 immunogen is 3-methylcholanthrene induced rat cytochrome P450 protein.

Product Images For CYP1A1/CYP1A2 Monoclonal Antibody (MC1)



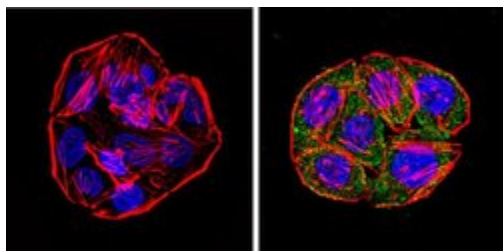
CYP1A1/CYP1A2 Antibody (MA3-036) in IF

Immunofluorescent analysis of Cytochrome P450 1A1/1A2 (green) showing staining in the cytoplasm and membrane of COS-7 cells. Formalin-fixed cells were permeabilized with 0.1% Triton X-100 in TBS for 5-10 minutes and blocked with 3% BSA-PBS for 30 minutes at room temperature. Cells were probed with a Cytochrome P450 1A1/1A2 monoclonal antibody (Product # MA3-036) in 3% BSA-PBS at a dilution of 1:100 and incubated overnight at 4 °C in a humidified chamber. Cells were washed with PBST and incubated with a DyLight-conjugated secondary antibody in PBS at room temperature in the dark. F-actin (red) was stained with a fluorescent red phalloidin and nuclei (blue) were stained with Hoechst or DAPI. Images were taken at a magnification of 60x.



CYP1A1/CYP1A2 Antibody (MA3-036) in IF

Immunofluorescent analysis of Cytochrome P450 1A1/1A2 (green) showing staining in the cytoplasm and membrane of HeLa cells. Formalin-fixed cells were permeabilized with 0.1% Triton X-100 in TBS for 5-10 minutes and blocked with 3% BSA-PBS for 30 minutes at room temperature. Cells were probed with a Cytochrome P450 1A1/1A2 monoclonal antibody (Product # MA3-036) in 3% BSA-PBS at a dilution of 1:100 and incubated overnight at 4 °C in a humidified chamber. Cells were washed with PBST and incubated with a DyLight-conjugated secondary antibody in PBS at room temperature in the dark. F-actin (red) was stained with a fluorescent red phalloidin and nuclei (blue) were stained with Hoechst or DAPI. Images were taken at a magnification of 60x.



CYP1A1/CYP1A2 Antibody (MA3-036) in IF

Immunofluorescent analysis of Cytochrome P450 1A1/1A2 (green) showing staining in the cytoplasm and membrane of HT29 cells. Formalin-fixed cells were permeabilized with 0.1% Triton X-100 in TBS for 5-10 minutes and blocked with 3% BSA-PBS for 30 minutes at room temperature. Cells were probed with a Cytochrome P450 1A1/1A2 monoclonal antibody (Product # MA3-036) in 3% BSA-PBS at a dilution of 1:100 and incubated overnight at 4 °C in a humidified chamber. Cells were washed with PBST and incubated with a DyLight-conjugated secondary antibody in PBS at room temperature in the dark. F-actin (red) was stained with a fluorescent red phalloidin and nuclei (blue) were stained with Hoechst or DAPI. Images were taken at a magnification of 60x.

[View more figures on thermofisher.com](http://thermofisher.com)

For Research Use Only. Not for use in diagnostic procedures. Not for resale without express authorization. Products are warranted to operate or perform substantially in conformance with published Product specifications in effect at the time of sale, as set forth in the Production documentation, specifications and/or accompanying package inserts ("Documentation"). No claim of suitability for use in applications regulated by FDA is made. The warranty provided herein is valid only when used by properly trained individuals. Unless otherwise stated in the Documentation, this warranty is limited to one year from date of shipment when the Product is subjected to normal, proper and intended usage. This warranty does not extend to anyone other than the Buyer. Any model or sample furnished to Buyer is merely illustrative of the general type and quality of goods and does not represent that any Product will conform to such model or sample. NO OTHER WARRANTIES, EXPRESS OR IMPLIED, ARE GRANTED INCLUDING WITHOUT LIMITATION, IMPLIED WARRANTIES OF MERCHANTABILITY, FITNESS FOR ANY PARTICULAR PURPOSE, OR NON INFRINGEMENT. BUYER'S EXCLUSIVE REMEDY FOR NON-CONFORMING PRODUCTS DURING THE WARRANTY PERIOD IS LIMITED TO REPAIR, REPLACEMENT OF OR REFUND FOR THE NON-CONFORMING PRODUCT(S) AT SELLER'S SOLE OPTION. THERE IS NO OBLIGATION TO REPAIR, REPLACE OR REFUND FOR PRODUCTS AS THE RESULT OF (I) ACCIDENT, DISASTER OR EVENT OF FORCE MAJEURE, (II) MISUSE, FAULT OR NEGLIGENCE OF OR BY BUYER, (III) USE OF THE PRODUCTS IN A MANNER FOR WHICH THEY WERE NOT DESIGNED, OR (IV) IMPROPER STORAGE AND HANDLING OF THE PRODUCTS. Unless otherwise expressly stated on the Product or in the documentation accompanying the Product, the Product is intended for research only and is not to be used for any other purpose, including without limitation, unauthorized commercial uses, in vitro diagnostic uses, ex vivo or in vivo therapeutic uses, or any type of consumption by or application to human or animals.