

MUC1 Monoclonal Antibody (MH1 (CT2))

Product Details

| | |
|--------------------|---|
| Size | 500 µL |
| Species Reactivity | Human, Mouse |
| Published Species | Rat, Mouse, Human |
| Host/Isotype | Armenian hamster / IgG |
| Class | Monoclonal |
| Type | Antibody |
| Clone | MH1 (CT2) |
| Conjugate | Unconjugated |
| Immunogen | A synthetic peptide corresponding to aa 239-255 (SSLSYTNPAVAATSANL) from the cytoplasmic tail of MUC1 |
| Form | Liquid |
| Concentration | 0.1 mg/mL |
| Purification | Protein G |
| Storage buffer | PBS, pH 7.4, with 0.2% BSA |
| Contains | 0.09% sodium azide |
| Storage conditions | 4° C |
| RRID | AB_11000874 |

| Applications | Tested Dilution | Publications |
|---|-----------------|-----------------|
| Western Blot (WB) | 1:50 | 15 Publications |
| Immunohistochemistry (IHC) | - | 12 Publications |
| Immunohistochemistry (Paraffin) (IHC (P)) | 1:100-1:200 | 4 Publications |
| Immunohistochemistry (Frozen) (IHC (F)) | - | 1 Publication |
| Immunocytochemistry (ICC/IF) | 1:10-1:100 | 7 Publications |
| Flow Cytometry (Flow) | 1-2 µg/test | - |
| Immunoprecipitation (IP) | - | 4 Publications |
| ChIP assay (ChIP) | - | 5 Publications |
| Miscellaneous PubMed (Misc) | - | 4 Publications |

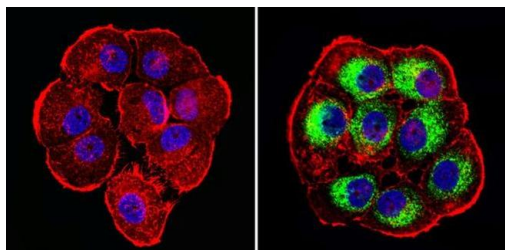
Product Specific Information

MA5-11202 detects smaller subunits (14-28kDa) of MUC-1.

Muc-1 is overexpressed in Breast cancer cells.

T47D cell lysate could be used as a positive control.

Product Images For MUC1 Monoclonal Antibody (MH1 (CT2))

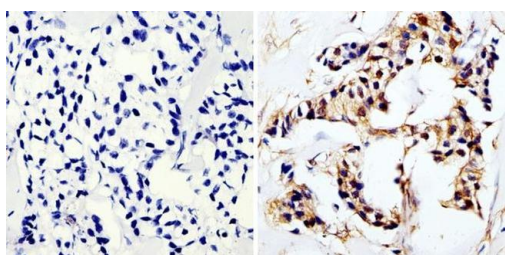
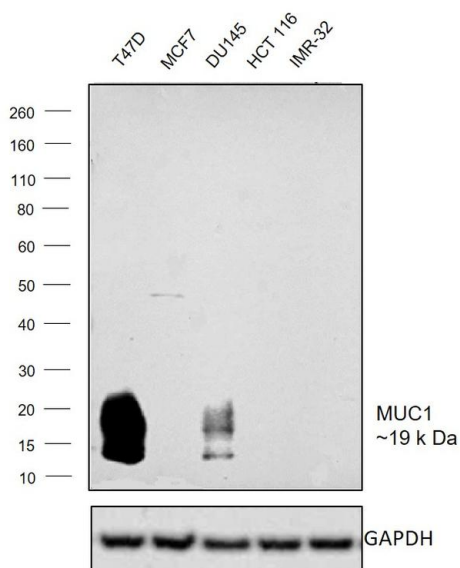


MUC1 Antibody (MA5-11202) in ICC/IF

Immunofluorescent analysis of CD227/MUC1/Mucin 1 (green) showing staining in the cytoplasm of T47D cells (right) compared to a negative control without primary antibody (left). Formalin-fixed cells were permeabilized with 0.1% Triton X-100 in TBS for 5-10 minutes and blocked with 3% BSA-PBS for 30 minutes at room temperature. Cells were probed with a CD227/MUC1/Mucin 1 monoclonal antibody (Product # MA5-11202) in 3% BSA-PBS at a dilution of 1:50 and incubated overnight at 4°C in a humidified chamber. Cells were washed with PBST and incubated with a DyLight-conjugated secondary antibody in PBS at room temperature in the dark. F-actin (red) was stained with a fluorescent red phalloidin and nuclei (blue) were stained with Hoechst or DAPI. Images were taken at a magnification of 60x.

MUC1 Antibody (MA5-11202)

Antibody specificity was demonstrated by detection of differential basal expression of the target across cell models owing to their inherent genetic constitution. Relative expression of MUC1 using Anti-MUC1 Monoclonal Antibody (MH1 (CT2)), (Product # MA5-11202) was observed in T47D and DU145 when compared to MCF7, HCT116 and IMR-32. {RE}



MUC1 Antibody (MA5-11202) in IHC (P)

Immunohistochemistry analysis of Mucin 1 showing staining in the cytoplasm of paraffin-embedded human breast carcinoma (right) compared to a negative control without primary antibody (left). To expose target proteins, antigen retrieval was performed using 10mM sodium citrate (pH 6.0), microwaved for 8-15 min. Following antigen retrieval, tissues were blocked in 3% H₂O₂-methanol for 15 min at room temperature, washed with ddH₂O and PBS, and then probed with a Mucin 1 monoclonal antibody (Product # MA5-11202) diluted in 3% BSA-PBS at a dilution of 1:20 overnight at 4°C in a humidified chamber. Tissues were washed extensively in PBST and detection was performed using an HRP-conjugated secondary antibody followed by colorimetric detection using a DAB kit. Tissues were counterstained with hematoxylin and dehydrated with ethanol and xylene to prep for mounting.

[View more figures on thermofisher.com](#)

52 References

Western Blot (15)

JCI insight

Nrf2 activation protects against lithium-induced nephrogenic diabetes insipidus.

"Published figure using MUC1 monoclonal antibody (Product # MA5-11202) in Immunohistochemistry"

Authors: Jobbagy S, Vitturi DA, Salvatore SR, Pires MF, Rowart P, Emler DR, Ross M, Hahn S, St Croix C, Wendell SG, Subramanya AR, Straub AC, Tan RJ, Schopfer FJ

Species

Not Applicable

Dilution

Not Cited

Year

2020

Oncogene

A Sox2-Sox9 signalling axis maintains human breast luminal progenitor and breast cancer stem cells.

"MA5-11202 was used in Western Blotting to reveal that Sox2 increases and estrogen reduces the expression of the transcription factor Sox9 which highlights the relevance of the SOX family transcription factors as therapeutic targets in breast cancer."

Authors: Domenici G, Aurrekoetxea-Rodríguez I, Simões BM, Rábano M, Lee SY, Millán JS, Comaills V, Oliemuller E, López-Ruiz JA, Zabalza I, Howard BA, Kypta RM, Vivanco MD

Species

Human

Dilution

Not Cited

Year

2019

[View more WB references on thermofisher.com](#)

Immunohistochemistry (12)

Cell reports

Apical Restriction of the Planar Cell Polarity Component VANGL in Pancreatic Ducts Is Required to Maintain Epithelial Integrity.

"MA5-11202 was used in Immunohistochemistry to show that apical restriction of planar cell polarity (PCP) components is necessary for the maintenance of epithelial integrity."

Authors: Flasse L, Yennek S, Cortijo C, Barandiaran IS, Kraus MR, Grapin-Botton A

Species

Mouse

Dilution

1:1000

Year

2020

JCI insight

Nrf2 activation protects against lithium-induced nephrogenic diabetes insipidus.

"Published figure using MUC1 monoclonal antibody (Product # MA5-11202) in Immunohistochemistry"

Authors: Jobbagy S, Vitturi DA, Salvatore SR, Pires MF, Rowart P, Emler DR, Ross M, Hahn S, St Croix C, Wendell SG, Subramanya AR, Straub AC, Tan RJ, Schopfer FJ

Species

Not Applicable

Dilution

Not Cited

Year

2020

[View more IHC references on thermofisher.com](#)

More applications with references on thermofisher.com

IHC (P) (4)

IHC (F) (1)

ICC/IF (7)

IP (4)

ChIP (5)

Misc (4)

For Research Use Only. Not for use in diagnostic procedures. Not for resale without express authorization. Products are warranted to operate or perform substantially in conformance with published Product specifications in effect at the time of sale, as set forth in the Production documentation, specifications and/or accompanying package inserts ("Documentation"). No claim of suitability for use in applications regulated by FDA is made. The warranty provided herein is valid only when used by properly trained individuals. Unless otherwise stated in the Documentation, this warranty is limited to one year from date of shipment when the Product is subjected to normal, proper and intended usage. This warranty does not extend to anyone other than the Buyer. Any model or sample furnished to Buyer is merely illustrative of the general type and quality of goods and does not represent that any Product will conform to such model or sample. NO OTHER WARRANTIES, EXPRESS OR IMPLIED, ARE GRANTED INCLUDING WITHOUT LIMITATION, IMPLIED WARRANTIES OF MERCHANTABILITY, FITNESS FOR ANY PARTICULAR PURPOSE, OR NON INFRINGEMENT. BUYER'S EXCLUSIVE REMEDY FOR NON-CONFORMING PRODUCTS DURING THE WARRANTY PERIOD IS LIMITED TO REPAIR, REPLACEMENT OF OR REFUND FOR THE NON-CONFORMING PRODUCT(S) AT SELLER'S SOLE OPTION. THERE IS NO OBLIGATION TO REPAIR, REPLACE OR REFUND FOR PRODUCTS AS THE RESULT OF (I) ACCIDENT, DISASTER OR EVENT OF FORCE MAJEURE, (II) MISUSE, FAULT OR NEGLIGENCE OF OR BY BUYER, (III) USE OF THE PRODUCTS IN A MANNER FOR WHICH THEY WERE NOT DESIGNED, OR (IV) IMPROPER STORAGE AND HANDLING OF THE PRODUCTS. Unless otherwise expressly stated on the Product or in the documentation accompanying the Product, the Product is intended for research only and is not to be used for any other purpose, including without limitation, unauthorized commercial uses, in vitro diagnostic uses, ex vivo or in vivo therapeutic uses, or any type of consumption by or application to human or animals.