

# MMP11 Monoclonal Antibody (SL3.05), Biotin

Product Details	
Size	500 µL
Species Reactivity	Human
Published Species	Dog, Human, Mouse
Host/Isotope	Mouse / IgG1, kappa
Class	Monoclonal
Type	Antibody
Clone	SL3.05
Conjugate	Biotin
Immunogen	Recombinant protein corresponding to active form of human MMP-11
Form	Liquid
Concentration	0.2 mg/mL
Purification	Protein G
Storage buffer	PBS, pH 7.4, with 0.2% BSA
Contains	0.09% sodium azide
Storage Conditions	4° C
RRID	AB_10978939

Applications	Tested	Dilution	Published
Immunohistochemistry (IHC)	-	0.3:250	5 Publications
Western Blot (WB)	✓	0.5-1.0 µg/mL	1 Publication
Immunohistochemistry (Paraffin) (IHC (P))	✓	1:200 - 400	
Immunoprecipitation (IP)	✓	2 µg/mL	

## Product Specific Information

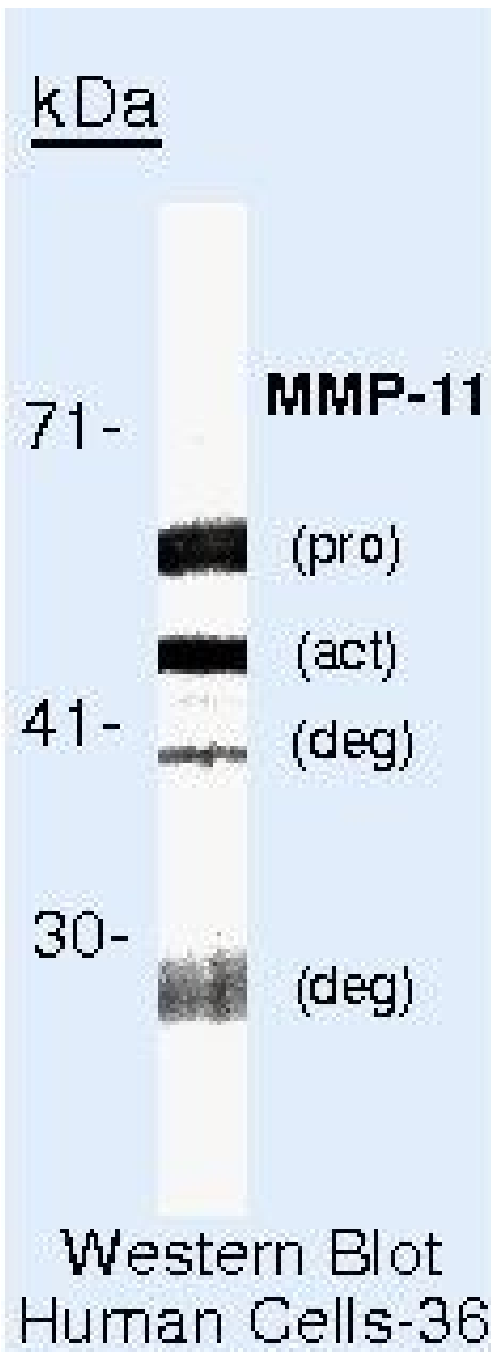
MA5-11231 targets MMP-11 (Stromelysin-3) in IHC (P), IP, and WB applications and shows reactivity with Human samples.

The MA5-11231 immunogen is recombinant protein corresponding to active form of human MMP-11.

## Product Images For MMP11 Monoclonal Antibody (SL3.05), Biotin

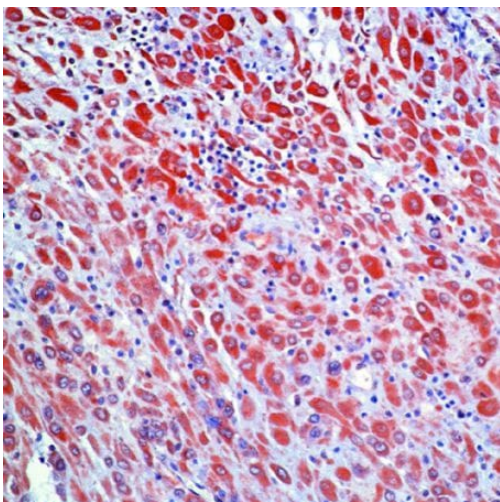
### MMP11 Antibody (MA5-11231) in WB

Western blot of MMP-11 (Stromelysin-3) using MMP-11 (Stromelysin-3) Monoclonal Antibody (Product # MA5-11231) on MMP-11 Cells.



### MMP11 Antibody (MA5-11231) in IHC

Formalin-fixed, paraffin-embedded human placenta stained with MMP-11 antibody using peroxidase-conjugate and AEC chromogen. Note cytoplasmic staining of trophoblasts.

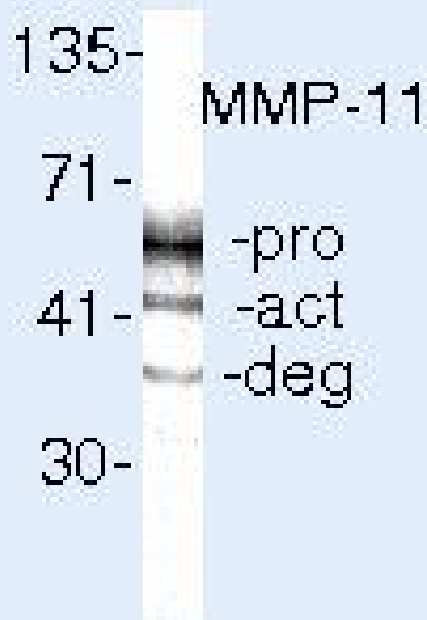


### MMP11 Antibody (MA5-11231) in IP

Immunoprecipitation of MMP-11 (Stromelysin-3) using MMP-11 (Stromelysin-3) Monoclonal Antibody (Product # MA5-11231) on Native Human MMP-11 Cells.

## Native IP

kDa



IP/Western Blot  
Human Cells-36

## 6 References

### Immunohistochemistry (5)

Romanian journal of morphology and embryology = Revue roumaine de morphologie et embryologie

#### Axillary basal cell carcinoma--a rare form of a frequent kind of carcinoma.

"MA5-11231 was used in immunohistochemistry to study axillary basal cell carcinoma"

Authors: Costescu M,Coman OA,Tampa M,Tudose I,Coman L,Georgescu SR

**Species**  
Human

**Dilution**  
0.3:250

**Year**  
2014

International journal of clinical oncology

#### Low microvascular density at the tumor center is related to the expression of metalloproteases and their inhibitors and with the occurrence of distant metastasis in breast carcinomas.

"MA5-11231 was used in immunohistochemistry to study the relationship between tumor microvascular density and the expression of MMPs and TIMPs in breast carcinoma and the significance for distant metastasis"

Authors: Fernández-Guinea O,Álvarez-Cofiño A,Eiró N,González LO,del Casar JM,Fernandez-Garcia B,Lamelas ML, Andicoechea A,Vizoso FJ

**Species**  
Human

**Dilution**  
1:200

**Year**  
2013

[View more IHC references on thermofisher.com](#)

### Western Blot (1)

Stem cells (Dayton, Ohio)

#### Matrix metalloprotease activity is an essential link between mechanical stimulus and mesenchymal stem cell behavior.

"MA5-11231 was used in western blot to investigate the expression levels of matrix metalloproteases in mesenchymal stem cell and their roles in mesenchymal stem cell behavior"

Authors: Kasper G,Glaeser JD,Geissler S,Ode A,Tuischer J,Matziolis G,Perka C,Duda GN

**Species**  
Human

**Dilution**  
1:250

**Year**  
2007

### More applications with references on thermofisher.com

For Research Use Only. Not for use in diagnostic procedures. Not for resale without express authorization. Products are warranted to operate or perform substantially in conformance with published Product specifications in effect at the time of sale, as set forth in the Production documentation, specifications and/or accompanying package inserts ("Documentation"). No claim of suitability for use in applications regulated by FDA is made. The warranty provided herein is valid only when used by properly trained individuals. Unless otherwise stated in the Documentation, this warranty is limited to one year from date of shipment when the Product is subjected to normal, proper and intended usage. This warranty does not extend to anyone other than the Buyer. Any model or sample furnished to Buyer is merely illustrative of the general type and quality of goods and does not represent that any Product will conform to such model or sample. NO OTHER WARRANTIES, EXPRESS OR IMPLIED, ARE GRANTED INCLUDING WITHOUT LIMITATION, IMPLIED WARRANTIES OF MERCHANTABILITY, FITNESS FOR ANY PARTICULAR PURPOSE, OR NON INFRINGEMENT. BUYER'S EXCLUSIVE REMEDY FOR NON-CONFORMING PRODUCTS DURING THE WARRANTY PERIOD IS LIMITED TO REPAIR, REPLACEMENT OF OR REFUND FOR THE NON-CONFORMING PRODUCT(S) AT SELLER'S SOLE OPTION. THERE IS NO OBLIGATION TO REPAIR, REPLACE OR REFUND FOR PRODUCTS AS THE RESULT OF (I) ACCIDENT, DISASTER OR EVENT OF FORCE MAJEURE, (II) MISUSE, FAULT OR NEGLIGENCE OF OR BY BUYER, (III) USE OF THE PRODUCTS IN A MANNER FOR WHICH THEY WERE NOT DESIGNED, OR (IV) IMPROPER STORAGE AND HANDLING OF THE PRODUCTS. Unless otherwise expressly stated on the Product or in the documentation accompanying the Product, the Product is intended for research only and is not to be used for any other purpose, including without limitation, unauthorized commercial uses, in vitro diagnostic uses, ex vivo or in vivo therapeutic uses, or any type of consumption by or application to human or animals.