

p57 Kip2 Monoclonal Antibody (57P06 (KP10))

Product Details	
Size	500 µL
Species Reactivity	Human, Mouse
Published Species	Human, Mouse
Host/Isotype	Mouse / IgG2b, kappa
Class	Monoclonal
Type	Antibody
Clone	57P06 (KP10)
Conjugate	Unconjugated
Immunogen	Recombinant human p57Kip2 protein
Form	Liquid
Concentration	0.2 mg/mL
Purification	Protein A
Storage buffer	PBS, pH 7.4, with 0.2% BSA
Contains	0.09% sodium azide
Storage Conditions	4° C
RRID	AB_10981309

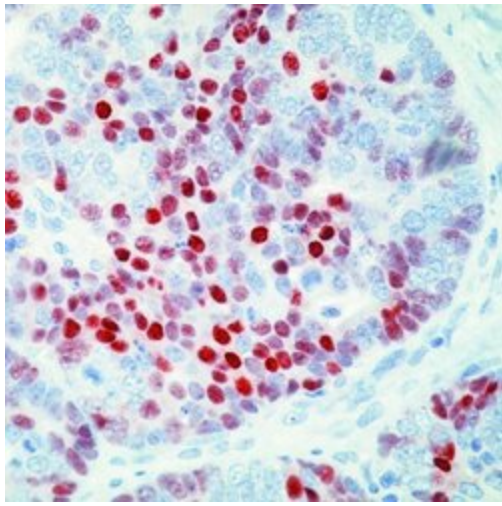
Applications	Tested Dilution	Publications
Immunohistochemistry (Paraffin) (IHC (P))	2-4 µg/mL	-
Immunoprecipitation (IP)	2 µg/mL	-
Western Blot (WB)	1:50-1:500	1 Publication
Immunohistochemistry (IHC)	-	22 Publications

Product Specific Information

MA5-11309 targets p57Kip2 in WB, IHC (P) and IP applications and shows reactivity with Human and mouse samples.

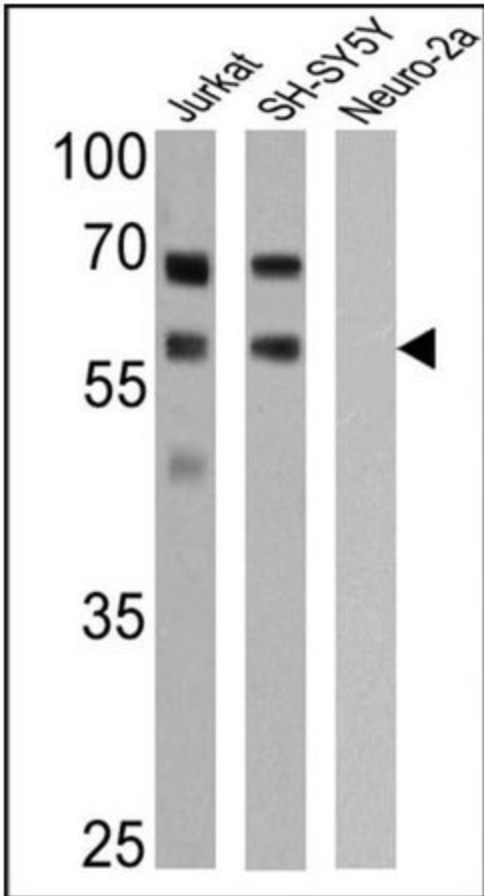
The MA5-11309 immunogen is recombinant human p57Kip2 protein.

Product Images For p57 Kip2 Monoclonal Antibody (57P06 (KP10))



p57 Kip2 Antibody (MA5-11309) in IHC

Formalin-fixed, paraffin-embedded human colon carcinoma stained with p57 antibody using peroxidase-conjugate and AEC chromogen. Note nuclear staining of tumor cells.



p57 Kip2 Antibody (MA5-11309) in WB

Western blot analysis of p57Kip2 was performed by loading 25 μ g of Jurkat (lane 1), SH-SY5Y (lane 2) and Neuro-2a (lane 3) cell lysates onto an SDS polyacrylamide gel. Proteins were transferred to a PVDF membrane and blocked at 4°C overnight. The membrane was probed with a p57Kip2 monoclonal antibody (Product # MA5-11309) at a dilution of 1:50 (Jurkat) and 1:100 (SH-SY5Y and Neuro-2a) overnight at 4°C, washed in TBST, and probed with an HRP-conjugated secondary antibody for 1 hr at room temperature in the dark. Chemiluminescent detection was performed using Pierce ECL Plus Western Blotting Substrate (Product # 32132). Results show a band at ~57 kDa.

Native IP

kDa

133-

86-

-p57^{Kip2}

41-

30-

IP / Western
Human Cells-17

p57 Kip2 Antibody (MA5-11309) in IP

Immunoprecipitation of p57Kip2 using p57Kip2 Monoclonal Antibody (Product # MA5-11309) on Native Human LS174T Cells.

23 References

Western Blot (1)

Cerebral cortex (New York, N.Y. : 1991)

The cyclin-dependent kinase inhibitor p57Kip2 regulates cell cycle exit, differentiation, and migration of embryonic cerebral cortical precursors.

"MA5-11309 was used in western blot to study the role of the CDK inhibitor p57Kip2 in regulating cell cycle exit."

Authors: Tury A, Mairet-Coello G, DiCicco-Bloom E

Species
Mouse

Dilution
Not Cited

Year
2011

Immunohistochemistry (22)

Genes, chromosomes and cancer

MiR-221 and MiR-222 alterations in sporadic ovarian carcinoma: Relationship to CDKN1B, CDKN1C and overall survival.

"MA5-11309 was used in immunohistochemistry to study alterations in MiR-221 and MiR-222 expression in sporadic ovarian carcinoma"

Authors: Wurz K, Garcia RL, Goff BA, Mitchell PS, Lee JH, Tewari M, Swisher EM

Species
Human

Dilution
1:400

Year
2010

Annals of surgical oncology

Cell cycle regulators show diagnostic and prognostic utility for differentiated thyroid cancer.

"MA5-11309 was used in immunohistochemistry to study the diagnostic and prognostic value of cell cycle regulators in differentiated thyroid cancer"

Authors: Melck A, Masoudi H, Griffith OL, Rajput A, Wilkins G, Bugis S, Jones SJ, Wiseman SM

Species
Human

Dilution
1:50

Year
2007

[View more IHC references on thermofisher.com](#)

More applications with references on thermofisher.com

For Research Use Only. Not for use in diagnostic procedures. Not for resale without express authorization. Products are warranted to operate or perform substantially in conformance with published Product specifications in effect at the time of sale, as set forth in the Production documentation, specifications and/or accompanying package inserts ("Documentation"). No claim of suitability for use in applications regulated by FDA is made. The warranty provided herein is valid only when used by properly trained individuals. Unless otherwise stated in the Documentation, this warranty is limited to one year from date of shipment when the Product is subjected to normal, proper and intended usage. This warranty does not extend to anyone other than the Buyer. Any model or sample furnished to Buyer is merely illustrative of the general type and quality of goods and does not represent that any Product will conform to such model or sample. NO OTHER WARRANTIES, EXPRESS OR IMPLIED, ARE GRANTED INCLUDING WITHOUT LIMITATION, IMPLIED WARRANTIES OF MERCHANTABILITY, FITNESS FOR ANY PARTICULAR PURPOSE, OR NON-INFRINGEMENT. BUYER'S EXCLUSIVE REMEDY FOR NON-CONFORMING PRODUCTS DURING THE WARRANTY PERIOD IS LIMITED TO REPAIR, REPLACEMENT OF OR REFUND FOR THE NON-CONFORMING PRODUCT(S) AT SELLER'S SOLE OPTION. THERE IS NO OBLIGATION TO REPAIR, REPLACE OR REFUND FOR PRODUCTS AS THE RESULT OF (I) ACCIDENT, DISASTER OR EVENT OF FORCE MAJEURE, (II) MISUSE, FAULT OR NEGLIGENCE OF OR BY BUYER, (III) USE OF THE PRODUCTS IN A MANNER FOR WHICH THEY WERE NOT DESIGNED, OR (IV) IMPROPER STORAGE AND HANDLING OF THE PRODUCTS. Unless otherwise expressly stated on the Product or in the documentation accompanying the Product, the Product is intended for research only and is not to be used for any other purpose, including without limitation, unauthorized commercial uses, in vitro diagnostic uses, ex vivo or in vivo therapeutic uses, or any type of consumption by or application to human or animals.