

BCL6 Monoclonal Antibody (BL6.02 (PG-B6p))

| Product Details | |
|--------------------|---|
| Size | 500 µL |
| Species Reactivity | Bovine, Human, Mouse, Sheep, Pig, Rabbit, Rat |
| Published Species | Human |
| Host/Isotype | Mouse / IgG1, kappa |
| Class | Monoclonal |
| Type | Antibody |
| Clone | BL6.02 (PG-B6p) |
| Conjugate | Unconjugated |
| Immunogen | Recombinant protein corresponding to amino acids 3-484 of the human Bcl-6 protein |
| Form | Liquid |
| Concentration | Conc. Not Determined |
| Storage buffer | tissue culture supernatant |
| Contains | 0.09% sodium azide |
| Storage conditions | 4° C |
| RRID | AB_10982856 |

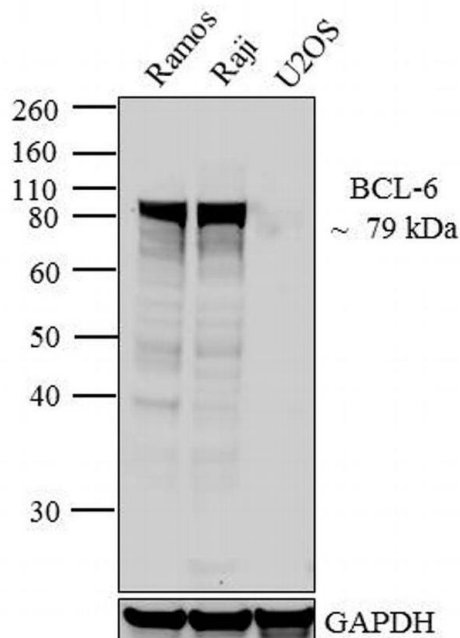
| Applications | Tested Dilution | Publications |
|---|-----------------|----------------|
| Western Blot (WB) | 1:10-1:100 | - |
| Immunohistochemistry (IHC) | - | 7 Publications |
| Immunohistochemistry (Paraffin) (IHC (P)) | 1:20 | - |
| Immunocytochemistry (ICC/IF) | - | 2 Publications |

Product Specific Information

MA5-11493 targets BCL-6 in IHC (P) and Western blot applications and shows reactivity with Bovine, Human, Ovine, Porcine, Rabbit, Mouse and Rat samples.

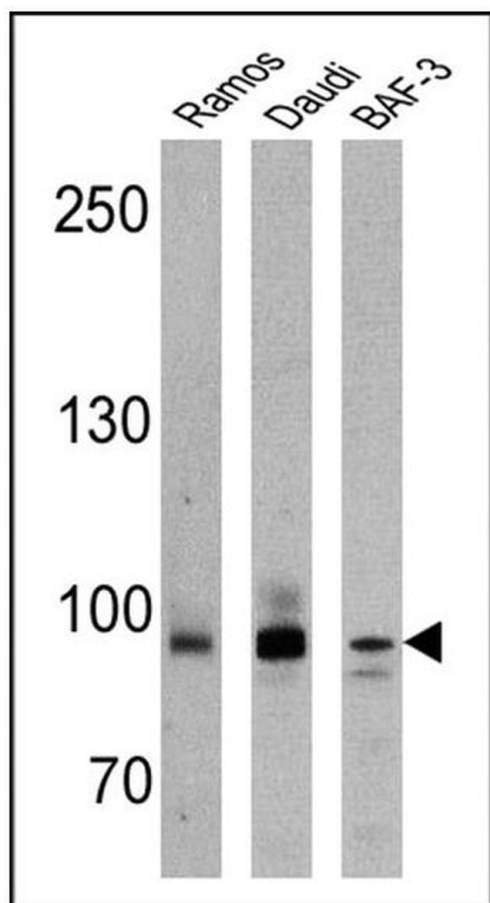
The MA5-11493 immunogen is recombinant protein corresponding to amino acids 3-484 of the human Bcl-6 protein.

Product Images For BCL6 Monoclonal Antibody (BL6.02 (PG-B6p))



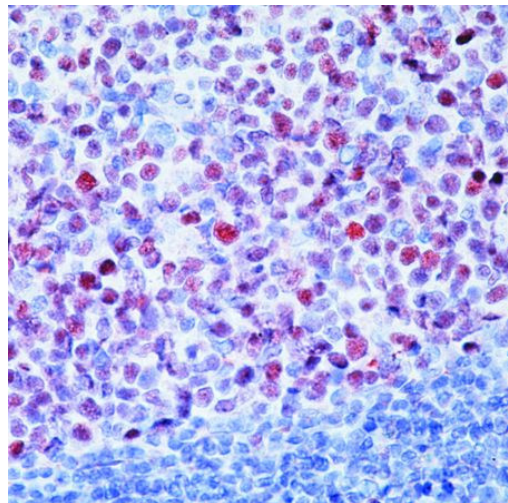
BCL6 Antibody (MA5-11493) in WB

Western blot analysis was performed on whole cell extracts (20 µg lysate) of Ramos (Lane 1), Raji (Lane 2) and U2OS (lane 3). The blots were probed with Anti-BCL-6 Mouse Monoclonal Antibody (Product # MA5-11493, 1:10-1:100 dilution) and detected by chemiluminescence using Goat anti-Mouse IgG (H+L) Secondary Antibody, HRP conjugate (Product # 62-6520, 1:4000 dilution). A 79 kDa band corresponding to BCL-6 was observed across cell lines tested expect U2OS. Known quantity of protein samples were electrophoresed using Novex® NuPAGE® 10 % Bis-Tris gel (Product # NP0301BOX), XCell SureLock™ Electrophoresis System (Product # EI0002) and Novex® Sharp Pre-Stained Protein Standard (Product # LC5800). Resolved proteins were then transferred onto a nitrocellulose membrane with Pierce™ Power Blotter System (Product # 22834). The membrane was probed with the relevant primary and secondary Antibody using iBind™ Flex Western Starter Kit (Product # SLF2000S). Chemiluminescent detection was performed using Pierce™ ECL Western Blotting Substrate (Product # 32106).



BCL6 Antibody (MA5-11493) in WB

Western blot analysis of BCL-6 was performed by loading 25 µg of Ramos (Lane 1), Daudi (Lane 2) and BAF-3 (Lane 3) cell lysates onto an SDS polyacrylamide gel. Proteins were transferred to a PVDF membrane and blocked at 4°C overnight. The membrane was probed with a BCL-6 monoclonal antibody (Product # MA5-11493) at a dilution of 1:20 (Ramos) and 1:10 (Daudi and BAF-3) overnight at 4°C, washed in TBST, and probed with an HRP-conjugated secondary antibody for 1 hr at room temperature in the dark. Chemiluminescent detection was performed using Pierce ECL Plus Western Blotting Substrate (Product # 32132). Results show a band at approx. 87-98 kDa.



BCL6 Antibody (MA5-11493) in IHC (P)

Formalin-fixed, paraffin-embedded human tonsil stained with Bcl-6 antibody using peroxidase-conjugate and AEC chromogen. Note nuclear staining of lymphocytes in the germinal center.

Immunohistochemistry (7)

Leukemia research

The expression of IgM is helpful in the differentiation of primary cutaneous diffuse large B cell lymphoma and follicle center lymphoma.

"MA5-11493 was used in immunohistochemistry to investigate the effect of IgM expressoin on the differentiation of primary cutaneous diffuse large B cell lymphoma and follicle center lymphoma"

Authors: Demirkesen C,Tüzüner N,Esen T,Lebe B,Ozkal S

Year
2011

Species
Human

Dilution
1:100

Modern pathology : an official journal of the United States and Canadian Academy of Pathology, Inc

E2A-positive gastric MALT lymphoma has weaker plasmacytoid infiltrates and stronger expression of the memory B-cell-associated miR-223: possible correlation with stage and treatment response.

"MA5-11493 was used in immunohistochemistry to investigate the correlation between miR-223 expression and gastric MALT lymphoma"

Authors: Liu TY,Chen SU,Kuo SH,Cheng AL,Lin CW

Year
2010

Species
Human

Dilution
1:20

[View more IHC references on thermofisher.com](#)

Immunocytochemistry (2)

Cancer research

v6 Integrin Promotes Castrate-Resistant Prostate Cancer through JNK1-Mediated Activation of Androgen Receptor.

"MA511493 was used in immunocytochemistry to describe the crosstalk of alphavbeta6-integrin and androgen receptor in prostate cancer."

Authors: Lu H,Wang T,Li J,Fedele C,Liu Q,Zhang J,Jiang Z,Jain D,Iozzo RV,Violette SM,Weinreb PH,Davis RJ,Gioeli D,FitzGerald TJ,Altieri DC,Languino LR

Year
2016

Species
Human

The Journal of experimental medicine

Enhancement of clonogenicity of human multiple myeloma by dendritic cells.

"MA5-11493 was used in immunocytochemistry to investigate the interaction between tumors and dendritic cells"

Authors: Kukreja A,Hutchinson A,Dhodapkar K,Mazumder A,Vesole D,Angitapalli R,Jagannath S,Dhodapkar MV

Year
2006

Species
Human

More applications with references on thermofisher.com

For Research Use Only. Not for use in diagnostic procedures. Not for resale without express authorization. Products are warranted to operate or perform substantially in conformance with published Product specifications in effect at the time of sale, as set forth in the Production documentation, specifications and/or accompanying package inserts ("Documentation"). No claim of suitability for use in applications regulated by FDA is made. The warranty provided herein is valid only when used by properly trained individuals. Unless otherwise stated in the Documentation, this warranty is limited to one year from date of shipment when the Product is subjected to normal, proper and intended usage. This warranty does not extend to anyone other than the Buyer. Any model or sample furnished to Buyer is merely illustrative of the general type and quality of goods and does not represent that any Product will conform to such model or sample. NO OTHER WARRANTIES, EXPRESS OR IMPLIED, ARE GRANTED INCLUDING WITHOUT LIMITATION, IMPLIED WARRANTIES OF MERCHANTABILITY, FITNESS FOR ANY PARTICULAR PURPOSE, OR NON INFRINGEMENT. BUYER'S EXCLUSIVE REMEDY FOR NON-CONFORMING PRODUCTS DURING THE WARRANTY PERIOD IS LIMITED TO REPAIR, REPLACEMENT OF OR REFUND FOR THE NON-CONFORMING PRODUCT(S) AT SELLER'S SOLE OPTION. THERE IS NO OBLIGATION TO REPAIR, REPLACE OR REFUND FOR PRODUCTS AS THE RESULT OF (I) ACCIDENT, DISASTER OR EVENT OF FORCE MAJEURE, (II) MISUSE, FAULT OR NEGLIGENCE OF OR BY BUYER, (III) USE OF THE PRODUCTS IN A MANNER FOR WHICH THEY WERE NOT DESIGNED, OR (IV) IMPROPER STORAGE AND HANDLING OF THE PRODUCTS. Unless otherwise expressly stated on the Product or in the documentation accompanying the Product, the Product is intended for research only and is not to be used for any other purpose, including without limitation, unauthorized commercial uses, in vitro diagnostic uses, ex vivo or in vivo therapeutic uses, or any type of consumption by or application to human or animals.