

Cytokeratin 14 Monoclonal Antibody (LL002)

Product Details

Size	500 µL
Species Reactivity	Human, Mouse, Rat
Published Species	Dog, Rat, Sheep, Cat, Mouse, Human, Horse, Rhesus monkey
Host/Isotype	Mouse / IgG3
Class	Monoclonal
Type	Antibody
Clone	LL002
Conjugate	Unconjugated
Immunogen	A synthetic peptide of 15 amino acid residues from the C-terminus of human keratin 14
Form	Liquid
Concentration	0.2 mg/mL
Purification	Protein G
Storage buffer	PBS, pH 7.4, with 0.2% BSA
Contains	0.09% sodium azide
Storage conditions	4° C
RRID	AB_10982092

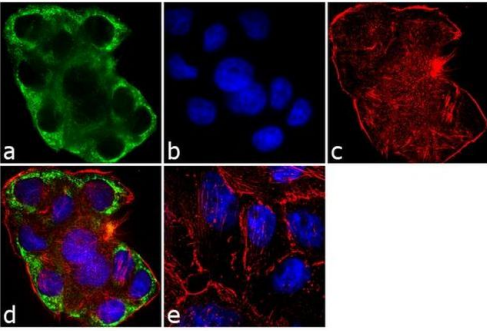
Applications	Tested Dilution	Publications
Western Blot (WB)	1-2 µg/mL	8 Publications
Immunohistochemistry (IHC)	-	75 Publications
Immunohistochemistry (Paraffin) (IHC (P))	1:800 - 1600	12 Publications
Immunohistochemistry (Frozen) (IHC (F))	-	4 Publications
Immunocytochemistry (ICC/IF)	2 µg/mL	12 Publications
Flow Cytometry (Flow)	-	2 Publications
Miscellaneous PubMed (Misc)	-	1 Publication

Product Specific Information

MA5-11599 targets Cytokeratin 14 in IHC (P) and WB applications and shows reactivity with Human and Rat samples.

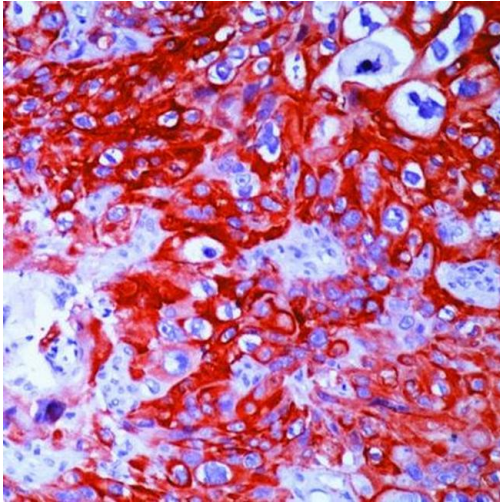
The MA5-11599 immunogen is a synthetic peptide of 15 amino acid residues from the C-terminus of human keratin 14.

Product Images For Cytokeratin 14 Monoclonal Antibody (LL002)



Cytokeratin 14 Antibody (MA5-11599) in ICC/IF

Immunofluorescent analysis of Cytokeratin 14 was performed using 70% confluent log phase A-431 cells. The cells were fixed with 4% paraformaldehyde for 10 minutes, permeabilized with 0.1% Triton™ X-100 for 10 minutes, and blocked with 1% BSA for 1 hour at room temperature. The cells were labeled with Cytokeratin 14 (LL002) Mouse Monoclonal Antibody (Product # MA5-11599) at 2 µg/mL in 0.1% BSA and incubated for 3 hours at room temperature and then labeled with Goat anti-Mouse IgG (H+L) Superclonal™ Secondary Antibody, Alexa Fluor® 488 conjugate (Product # A28175) a dilution of 1:2000 for 45 minutes at room temperature (Panel a: green). Nuclei (Panel b: blue) were stained with SlowFade® Gold Antifade Mountant with DAPI (Product # S36938). F-actin (Panel c: red) was stained with Alexa Fluor® 555 Rhodamine Phalloidin (Product # R415, 1:300). Panel d represents the merged image showing cytoplasmic localization. Panel e shows the no primary antibody control. The images were captured at 60X magnification.

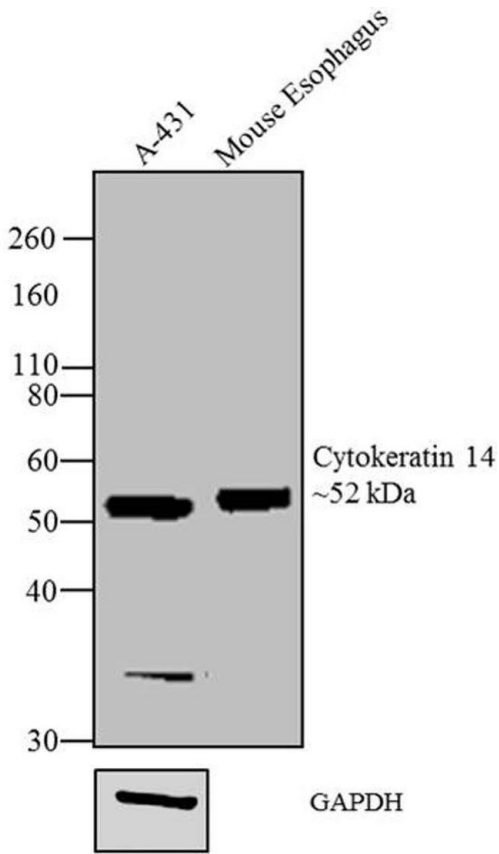


Cytokeratin 14 Antibody (MA5-11599) in IHC

Formalin-fixed, paraffin-embedded human squamous cell carcinoma of lung stained with Keratin 14 antibody using peroxidase-conjugate and DAB chromogen. Note cytoplasmic staining of tumor cells.

Cytokeratin 14 Antibody (MA5-11599) in WB

Western blot analysis was performed on whole cell extract and tissue extract of A431 (Lane 1) and Mouse esophagus tissue (Lane 2). The blots were probed with Anti-Cytokeratin 14 Mouse Monoclonal Antibody (Product # MA5-11599, 2 µg/mL) and detected by chemiluminescence using Goat anti-Mouse IgG (H+L) Superclonal™ Secondary Antibody, HRP conjugate (Product # A28177, 0.4 µg/mL, 1:2500 dilution). A ~ 52 kDa band corresponding to Cytokeratin 14 was observed across cell line and tissue extract tested. Known quantity of protein samples were electrophoresed using Novex® NuPAGE® 4-12 % Bis-Tris gel (Product # NP0321BOX), XCell SureLock™ Electrophoresis System (Product # E10002) and Novex® Sharp Pre-Stained Protein Standard (Product # LC5800). Resolved proteins were then transferred onto a nitrocellulose membrane with iBlot® 2 Dry Blotting System (Product # IB21001). The membrane was probed with the relevant primary and secondary Antibody following blocking with 5 % skimmed milk. Chemiluminescent detection was performed using Pierce™ ECL Western Blotting Substrate (Product # 32106).



[View more figures on thermofisher.com](https://www.thermofisher.com)

Western Blot (8)

Cancers

Role of the CXCR4-LASP1 Axis in the Stabilization of Snail1 in Triple-Negative Breast Cancer.

"MA5-11599 was used in Western Blotting to report that the nuclear accumulation and retention of Snail1 is dependent on an increase in nuclear LASP1 levels driven by active CXCR4."

Authors: Subramaniyan B,Sridharan S,M Howard C,M C Tilley A,Basuroy T,de la Serna I,Butt E,Raman D

Species
Human

Dilution
Not Cited

Year
2020

Journal of periodontal research

Down-regulation of epidermal growth factor receptor-dependent signaling by Porphyromonas gingivalis lipopolysaccharide in life-expanded human gingival fibroblasts.

"MA5-11599 was used in western blot to study the down-regulation of EGF receptor-dependent signaling by Porphyromonas gingivalis lipopolysaccharide"

Authors: Quinchia-Rios BH,Guerrero M,Abozeid S,Bainbridge B,Darveau R,Compton T,Bertics PJ

Species
Human

Dilution
Not Cited

Year
2008

[View more WB references on thermofisher.com](#)

Immunohistochemistry (75)

The Journal of investigative dermatology

FUT8 Remodeling of EGFR Regulates Epidermal Keratinocyte Proliferation during Psoriasis Development.

"MA5-11599 was used in Immunohistochemistry to imply that elevated FUT8 expression in the lesional epidermis is implicated in the development of psoriasis phenotypes, being required for EGFR overactivation and leading to keratinocyte hyperproliferation."

Authors: Kelel M,Yang RB,Tsai TF,Liang PH,Wu FY,Huang YT,Yang MF,Hsiao YP,Wang LF,Tu CF,Liu FT,Lee YL

Species
Mouse

Dilution
1:200

Year
2021

Scientific reports

Olfactomedin 4 mediation of prostate stem/progenitor-like cell proliferation and differentiation via MYC.

"MA5-11599 was used in Immunohistochemistry-immunofluorescence to indicate that OLFM4 is co-expressed with multiple stem/progenitor cell marker genes in prostate epithelial cells and acts as a novel mediator in prostate stem /progenitor cell proliferation and differentiation."

Authors: Li H,Chaitankar V,Zhu J,Chin K,Liu W,Pirooznia M,Rodgers GP

Species
Human

Dilution
Not Cited

Year
2020

[View more IHC references on thermofisher.com](#)

More applications with references on thermofisher.com

IHC (P) (12)

IHC (F) (4)

ICC/IF (12)

Flow (2)

Misc (1)

For Research Use Only. Not for use in diagnostic procedures. Not for resale without express authorization. Products are warranted to operate or perform substantially in conformance with published Product specifications in effect at the time of sale, as set forth in the Production documentation, specifications and/or accompanying package inserts ("Documentation"). No claim of suitability for use in applications regulated by FDA is made. The warranty provided herein is valid only when used by properly trained individuals. Unless otherwise stated in the Documentation, this warranty is limited to one year from date of shipment when the Product is subjected to normal, proper and intended usage. This warranty does not extend to anyone other than the Buyer. Any model or sample furnished to Buyer is merely illustrative of the general type and quality of goods and does not represent that any Product will conform to such model or sample. NO OTHER WARRANTIES, EXPRESS OR IMPLIED, ARE GRANTED INCLUDING WITHOUT LIMITATION, IMPLIED WARRANTIES OF MERCHANTABILITY, FITNESS FOR ANY PARTICULAR PURPOSE, OR NON INFRINGEMENT. BUYER'S EXCLUSIVE REMEDY FOR NON-CONFORMING PRODUCTS DURING THE WARRANTY PERIOD IS LIMITED TO REPAIR, REPLACEMENT OF OR REFUND FOR THE NON-CONFORMING PRODUCT(S) AT SELLER'S SOLE OPTION. THERE IS NO OBLIGATION TO REPAIR, REPLACE OR REFUND FOR PRODUCTS AS THE RESULT OF (I) ACCIDENT, DISASTER OR EVENT OF FORCE MAJEURE, (II) MISUSE, FAULT OR NEGLIGENCE OF OR BY BUYER, (III) USE OF THE PRODUCTS IN A MANNER FOR WHICH THEY WERE NOT DESIGNED, OR (IV) IMPROPER STORAGE AND HANDLING OF THE PRODUCTS. Unless otherwise expressly stated on the Product or in the documentation accompanying the Product, the Product is intended for research only and is not to be used for any other purpose, including without limitation, unauthorized commercial uses, in vitro diagnostic uses, ex vivo or in vivo therapeutic uses, or any type of consumption by or application to human or animals.