

Rhodopsin Monoclonal Antibody (RET-P1)

Product Details	
Size	500 µL
Species Reactivity	Human, Mouse, Rat
Published Species	Dog, Rat, Human, Mouse
Host/Isotope	Mouse / IgG1
Class	Monoclonal
Type	Antibody
Clone	RET-P1
Conjugate	Unconjugated
Immunogen	Membrane preparation from adult rat retina
Form	Liquid
Concentration	0.2 mg/mL
Purification	Protein G
Storage buffer	PBS, pH 7.4, with 0.2% BSA
Contains	0.09% sodium azide
Storage Conditions	4° C
RRID	AB_10980983

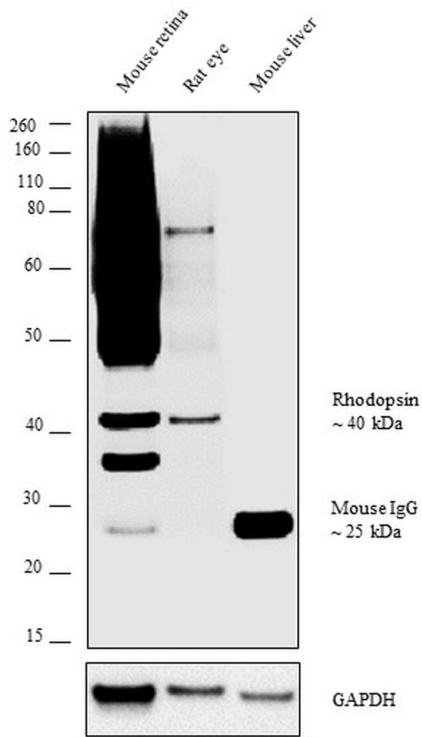
Applications	Tested	Dilution	Published
Immunofluorescence (IF)	✓	Assay Dependent	1 Publication
Flow Cytometry (Flow)	-		1 Publication
Immunohistochemistry (Paraffin) (IHC (P))	✓	1:50 - 1:200	1 Publication
Immunohistochemistry (IHC)	-	1-2 ug/mL	7 Publications
Western Blot (WB)	✓	1:1000	1 Publication

Product Specific Information

MA5-11741 targets Rhodopsin in immunofluorescence, immunohistochemistry (paraffin) and Western blot applications and shows reactivity with human, mouse, and rat samples.

The MA5-11741 immunogen is membrane preparation from adult rat retina.

Advanced Verification Data

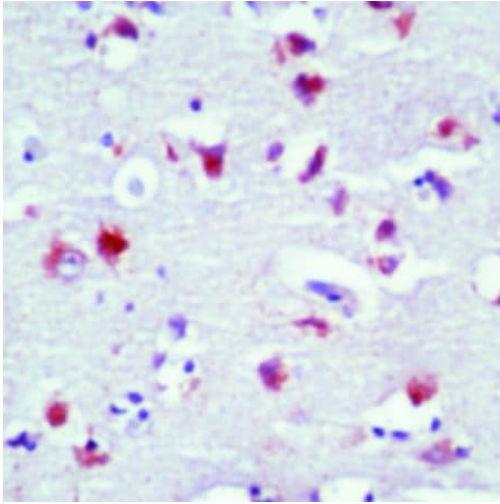


Rhodopsin Antibody (MA5-11741)

Antibody specificity was demonstrated by detection of differential basal expression of the target across tissue models owing to their inherent genetic constitution.

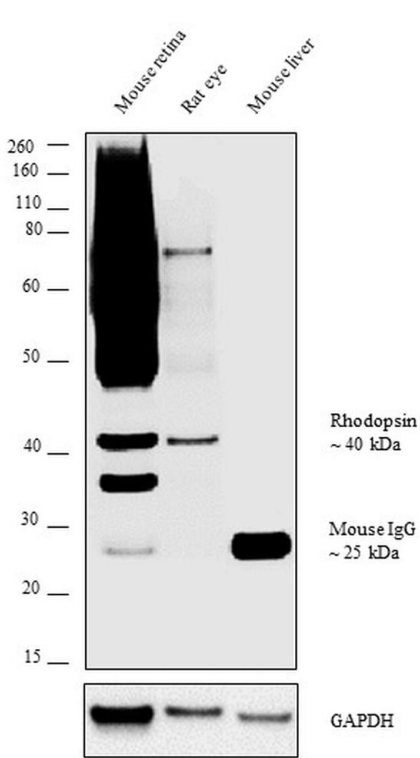
Expression of Rhodopsin was observed specifically in Mouse retina and Rat eye using Rhodopsin Monoclonal Antibody (RET-P1) (Product # MA5-11741) in western blot. Relative expression validation info.

Product Images For Rhodopsin Monoclonal Antibody (RET-P1)



Rhodopsin Antibody (MA5-11741) in IHC

Formalin-fixed, paraffin-embedded human brain stained with Rhodopsin antibody using peroxidase-conjugate and AEC chromogen. Note cytoplasmic staining of neurons.



Rhodopsin Antibody (MA5-11741) in WB

Western blot analysis was performed on tissue extract (30 μ g lysate) of Mouse retina (Lane 1), Rat eye (Lane 2) and Mouse liver (Lane 3). The blot was probed with Anti-Rhodopsin Monoclonal Antibody (RET-P1) (Product # MA5-11741, 1:1000 dilution) and detected by chemiluminescence using Goat anti-Mouse IgG (H+L) Superclonal™ Secondary Antibody, HRP conjugate (Product # A28177, 0.25 μ g/ml, 1:4000 dilution). A 40 kDa band corresponding to Rhodopsin was detected in relevant tissue samples (retina and eye) with no detection in liver tissue sample.

[View more figures on thermofisher.com](https://www.thermofisher.com)

11 References

Immunofluorescence (1)

eLife

***Rai1* frees mice from the repression of active wake behaviors by light.**

"Published figure using Rhodopsin monoclonal antibody (Product # MA5-11741) in Immunofluorescence"

Authors: Diessler S, Kostic C, Arsenijevic Y, Kawasaki A, Franken P

Species
Not Applicable

Dilution
Not Cited

Year
2017

Flow Cytometry (1)

PloS one

Effect of purified murine NGF on isolated photoreceptors of a rodent developing retinitis pigmentosa.

"MA5-11741 was used in flow cytometry and immunocytochemistry to analyze developing retinitis pigmentosa in a rodent after purified murine NGF on isolated photoreceptors"

Authors: Rocco ML, Balzamino BO, Petrocchi Passeri P, Micera A, Aloe L

Species
Not Applicable

Dilution
Not Cited

Year
2016

Immunohistochemistry (Paraffin) (1)

Investigative ophthalmology and visual science

Retinal Pigment Epithelium Atrophy 1 (rpea1): A New Mouse Model With Retinal Detachment Caused by a Disruption of Protein Kinase C, .

"MA5-11741 was used in immunohistochemistry - paraffin section to utilize a novel mouse model with retinal detachment caused by a disruption of protein kinase C, theta, to study retinal pigment epithelium atrophy 1 (rpea1)"

Authors: Ji X, Liu Y, Hurd R, Wang J, Fitzmaurice B, Nishina PM, Chang B

Species
Not Applicable

Dilution
Not Cited

Year
2016

Immunohistochemistry (7)

Graefe's archive for clinical and experimental ophthalmology =
Albrecht von Graefes Archiv fur klinische und experimentelle
Ophthalmologie

Proliferation of the ciliary epithelium with retinal neuronal and photoreceptor cell differentiation in human eyes with retinal detachment and proliferative vitreoretinopathy.

"MA5-11741 was used in immunohistochemistry to investigate the trans-differentiating capacity of ciliary epithelial cells in human eyes"

Authors: Ducournau Y, Boscher C, Adelman RA, Guillaubey C, Schmidt-Morand D, Mosnier JF, Ducournau D

Species
Human

Dilution
1-2 ug/mL

Year
2012

[View more IHC references on thermofisher.com](#)

More applications with references on thermofisher.com

WB (1)

For Research Use Only. Not for use in diagnostic procedures. Not for resale without express authorization. Products are warranted to operate or perform substantially in conformance with published Product specifications in effect at the time of sale, as set forth in the Production documentation, specifications and/or accompanying package inserts ("Documentation"). No claim of suitability for use in applications regulated by FDA is made. The warranty provided herein is valid only when used by properly trained individuals. Unless otherwise stated in the Documentation, this warranty is limited to one year from date of shipment when the Product is subjected to normal, proper and intended usage. This warranty does not extend to anyone other than the Buyer. Any model or sample furnished to Buyer is merely illustrative of the general type and quality of goods and does not represent that any Product will conform to such model or sample. NO OTHER WARRANTIES, EXPRESS OR IMPLIED, ARE GRANTED INCLUDING WITHOUT LIMITATION, IMPLIED WARRANTIES OF MERCHANTABILITY, FITNESS FOR ANY PARTICULAR PURPOSE, OR NON INFRINGEMENT. BUYER'S EXCLUSIVE REMEDY FOR NON-CONFORMING PRODUCTS DURING THE WARRANTY PERIOD IS LIMITED TO REPAIR, REPLACEMENT OF OR REFUND FOR THE NON-CONFORMING PRODUCT(S) AT SELLER'S SOLE OPTION. THERE IS NO OBLIGATION TO REPAIR, REPLACE OR REFUND FOR PRODUCTS AS THE RESULT OF (I) ACCIDENT, DISASTER OR EVENT OF FORCE MAJEURE, (II) MISUSE, FAULT OR NEGLIGENCE OF OR BY BUYER, (III) USE OF THE PRODUCTS IN A MANNER FOR WHICH THEY WERE NOT DESIGNED, OR (IV) IMPROPER STORAGE AND HANDLING OF THE PRODUCTS. Unless otherwise expressly stated on the Product or in the documentation accompanying the Product, the Product is intended for research only and is not to be used for any other purpose, including without limitation, unauthorized commercial uses, in vitro diagnostic uses, ex vivo or in vivo therapeutic uses, or any type of consumption by or application to human or animals.