

ErbB2 (HER-2) Antibody Cocktail

Product Details	
Size	500 µL
Species Reactivity	Human
Published Species	Non-human primate, Human, Mouse
Host/Isotope	Mouse / IgG1
Class	Cocktail
Type	Antibody
Clone	L87 + 2ERB19
Conjugate	Unconjugated
Immunogen	Extracellular domain of recombinant human c-erbB-2 oncoprotein
Form	Liquid
Concentration	0.2 mg/mL
Purification	Protein G
Storage buffer	PBS, pH 7.4, with 0.2% BSA
Contains	0.09% sodium azide
Storage Conditions	4° C
RRID	AB_10981681

Applications	Tested Dilution	Publications
Immunocytochemistry (ICC)	2 µg/mL	-
Immunofluorescence (IF)	2 µg/mL	-
Western Blot (WB)	0.5-1.0 µg/mL	14 Publications
Immunohistochemistry (IHC)	-	2 Publications
Immunoprecipitation (IP)	-	1 Publication

Product Specific Information

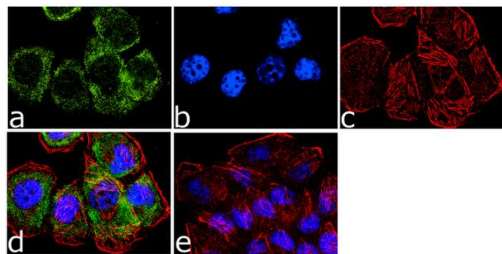
MA5-11976 targets HER-2 in WB applications and shows reactivity with Human samples.

The MA5-11976 immunogen is extracellular domain of recombinant human c-erbB-2 oncoprotein.

Product Images For ErbB2 (HER-2) Antibody Cocktail

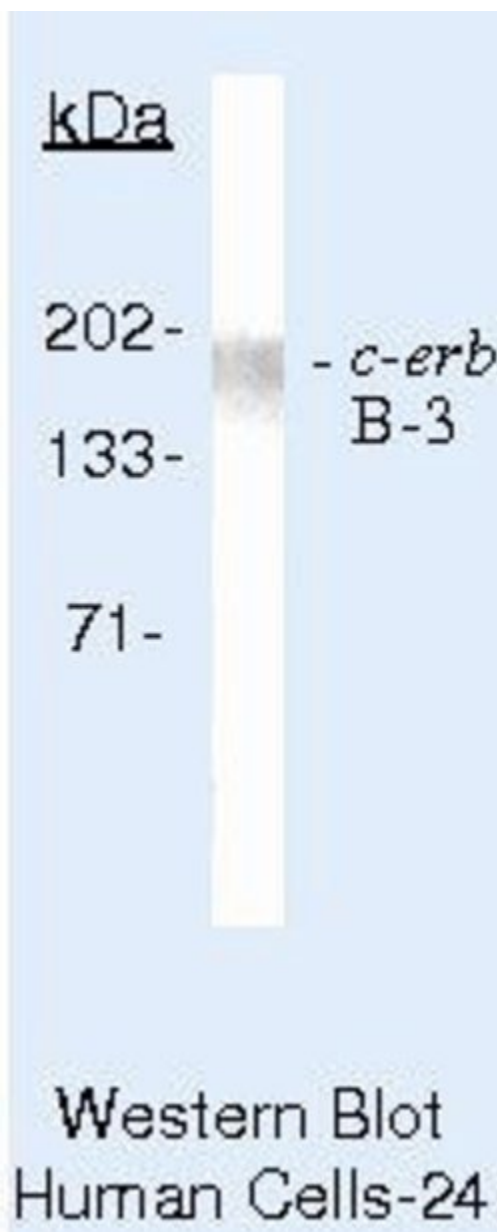
ErbB2 (HER-2) Antibody (MA5-11976) in IF

Immunofluorescence analysis of HER-2/ErbB2 was done on 70% confluent log phase T47D cells. The cells were fixed with 4% paraformaldehyde for 10 minutes, permeabilized with 0.1% Triton™ X-100 for 10 minutes, and blocked with 1% BSA for 1 hour at room temperature. The cells were labeled with HER-2/ErbB2 (L87 + 2ERB19) Mouse Monoclonal Antibody (Product # MA5-11976) at 2 µg/mL in 0.1% BSA and incubated for 3 hours at room temperature and then labeled with Goat anti-Mouse IgG (H+L) Superclonal™ Secondary Antibody, Alexa Fluor® 488 conjugate (Product # A28175) at a dilution of 1:2000 for 45 minutes at room temperature (Panel a: green). Nuclei (Panel b: blue) were stained with SlowFade® Gold Antifade Mountant with DAPI (Product # S36938). F-actin (Panel c: red) was stained with Alexa Fluor® 555 Rhodamine Phalloidin (Product # R415, 1:300). Panel d is a merged image showing cytoplasmic and membranous localization. Panel e is a no primary antibody control. The images were captured at 60X magnification.



ErbB2 (HER-2) Antibody (MA5-11976) in WB

Western blot of HER-2 using HER-2 Monoclonal Antibody (Product # MA5-11976) on SKBR3 Cells.



17 References

Immunohistochemistry (2)

Evidence-based complementary and alternative medicine : eCAM

Ganoderma tsugae Extract Inhibits Growth of HER2-Overexpressing Cancer Cells via Modulation of HER2/PI3K/Akt Signaling Pathway.

"MA5-11976 was used in immunohistochemistry, immunoprecipitation, and western blot to study the role of the HER2-PI3 kinase-Akt pathway in the inhibitory effects of a *Ganoderma tsugae* extract on the growth of cancer cells overexpressing HER2"

Authors: Kuo HP,Hsu SC,Ou CC,Li JW,Tseng HH,Chuang TC,Liu JY,Chen SJ,Su MH,Cheng YC,Chou WY,Kao MC

Species
Human

Dilution
Not Cited

Year
2013

The journal of gene medicine

Delivery of noncarrier naked DNA vaccine into the skin by supersonic flow induces a polarized T helper type 1 immune response to cancer.

"MA5-11976 was used in immunohistochemistry to investigate the immune response elicited by the skin delivery of naked DNA vaccine"

Authors: Lin CC,Yen MC,Lin CM,Huang SS,Yang HJ,Chow NH,Lai MD

Species
Human

Dilution
2 ug/ml

Year
2008

Western Blot (14)

British journal of cancer

Defining the molecular response to trastuzumab, pertuzumab and combination therapy in ovarian cancer.

"MA5-11976 was used in western blot to study the molecular mechanisms underlying the therapeutic actions of trastuzumab and pertuzumab against ovarian cancer"

Authors: Sims AH,Zweemer AJ,Nagumo Y,Faratian D,Muir M,Dodds M,Um I,Kay C,Hasmann M,Harrison DJ,Langdon SP

Species
Mouse

Dilution
Not Cited

Year
2012

Journal of cellular physiology

Shed HER2 extracellular domain in HER2-mediated tumor growth and in trastuzumab susceptibility.

"MA5-11976 was used in western blot to study the role of the shed HER2 extracellular domain in HER2-mediated tumor growth and in trastuzumab susceptibility"

Authors: Ghedini GC,Ciravolo V,Tortoreto M,Giuffrè S,Bianchi F,Campiglio M,Mortarino M,Figini M,Coliva A,Carcangiu ML,Zambetti M,Piazza T,Ferrini S,Ménard S,Tagliabue E,Pupa SM

Species
Human

Dilution
0.5 ug/ml

Year
2010

[View more WB references on thermofisher.com](#)

More applications with references on thermofisher.com

IP (1)

For Research Use Only. Not for use in diagnostic procedures. Not for resale without express authorization. Products are warranted to operate or perform substantially in conformance with published Product specifications in effect at the time of sale, as set forth in the Production documentation, specifications and/or accompanying package inserts ("Documentation"). No claim of suitability for use in applications regulated by FDA is made. The warranty provided herein is valid only when used by properly trained individuals. Unless otherwise stated in the Documentation, this warranty is limited to one year from date of shipment when the Product is subjected to normal, proper and intended usage. This warranty does not extend to anyone other than the Buyer. Any model or sample furnished to Buyer is merely illustrative of the general type and quality of goods and does not represent that any Product will conform to such model or sample. NO OTHER WARRANTIES, EXPRESS OR IMPLIED, ARE GRANTED INCLUDING WITHOUT LIMITATION, IMPLIED WARRANTIES OF MERCHANTABILITY, FITNESS FOR ANY PARTICULAR PURPOSE, OR NON INFRINGEMENT. BUYER'S EXCLUSIVE REMEDY FOR NON-CONFORMING PRODUCTS DURING THE WARRANTY PERIOD IS LIMITED TO REPAIR, REPLACEMENT OF OR REFUND FOR THE NON-CONFORMING PRODUCT(S) AT SELLER'S SOLE OPTION. THERE IS NO OBLIGATION TO REPAIR, REPLACE OR REFUND FOR PRODUCTS AS THE RESULT OF (I) ACCIDENT, DISASTER OR EVENT OF FORCE MAJEURE, (II) MISUSE, FAULT OR NEGLIGENCE OF OR BY BUYER, (III) USE OF THE PRODUCTS IN A MANNER FOR WHICH THEY WERE NOT DESIGNED, OR (IV) IMPROPER STORAGE AND HANDLING OF THE PRODUCTS. Unless otherwise expressly stated on the Product or in the documentation accompanying the Product, the Product is intended for research only and is not to be used for any other purpose, including without limitation, unauthorized commercial uses, in vitro diagnostic uses, ex vivo or in vivo therapeutic uses, or any type of consumption by or application to human or animals.