

# 14-3-3 Pan Monoclonal Antibody (CG15)

Product Details	
Size	500 µL
Species	Human, Mouse
Published Species	Mouse, Human
Expression System	Mouse / IgG1, kappa
Class	Monoclonal
Type	Antibody
Clone	CG15
Conjugate	Unconjugated
Immunogen	14-3-3 gamma recombinant human protein
Form	Liquid
Concentration	0.2 mg/mL
Purification	Protein G
Storage buffer	PBS, pH 7.4, with 0.2% BSA
Contains	0.09% sodium azide
Storage Conditions	4° C
RRID	AB_10986852

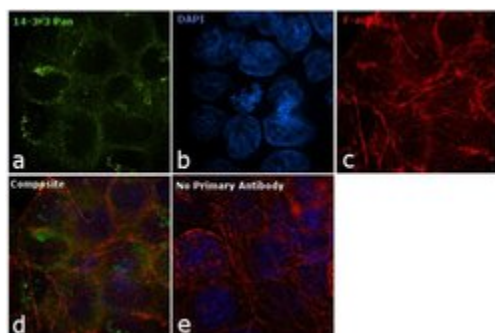
Applications	Tested Dilution	Publications
Immunocytochemistry (ICC)	5 µg/mL	1 Publication
Immunofluorescence (IF)	5 µg/mL	-
Immunohistochemistry (Paraffin) (IHC (P))	1:10-1:100	-
Immunoprecipitation (IP)	2 µg/mL	3 Publications
Western Blot (WB)	1-2 µg/mL	3 Publications

## Product Specific Information

MA5-12242 targets 14.3.3 pan in IP, ICC/IF, IHC (P) and WB applications and shows reactivity with Human and Mouse samples.

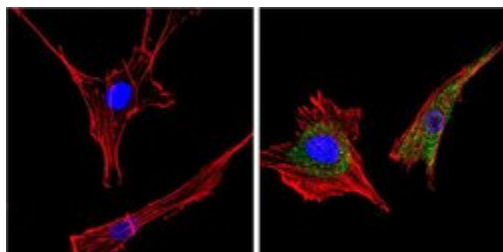
The MA5-12242 immunogen is 14-3-3 gamma recombinant human protein.

## Product Images For 14-3-3 Pan Monoclonal Antibody (CG15)



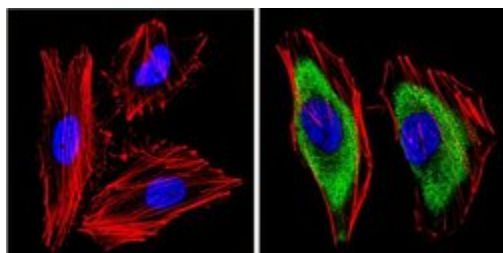
### 14-3-3 Pan Antibody (MA5-12242) in IF

Immunofluorescence analysis of 14-3-3 Pan was performed using 70% confluent log phase A-431 cells. The cells were fixed with 4% paraformaldehyde for 10 minutes, permeabilized with 0.1% Triton™ X-100 for 10 minutes, and blocked with 1% BSA for 1 hour at room temperature. The cells were labeled with 14-3-3 Mouse Monoclonal Antibody (Product # MA5-12242) at 5 µg/mL in 0.1% BSA and incubated overnight at 4 degree and then labeled with Goat anti-Mouse IgG (H+L) Superclonal™ Secondary Antibody, Alexa Fluor® 488 conjugate (Product # A28175) at a dilution of 1:2000 for 45 minutes at room temperature (Panel a: green). Nuclei (Panel b: blue) were stained with SlowFade® Gold Antifade Mountant with DAPI (Product # S36938). F-actin (Panel c: red) was stained with Rhodamine Phalloidin (Product # R415, 1:300). Panel d represents the merged image showing cytoplasmic localization. Panel e represents control cells with no primary antibody to assess background. The images were captured at 60X magnification.



### 14-3-3 Pan Antibody (MA5-12242) in IF

Immunofluorescent analysis of 14.3.3 pan (green) showing staining in the cytoplasm of NIH-3T3 cells. Formalin-fixed cells were permeabilized with 0.1% Triton X-100 in TBS for 5-10 minutes and blocked with 3% BSA-PBS for 30 minutes at room temperature. Cells were probed with a 14.3.3 pan monoclonal antibody (Product # MA5-12242) in 3% BSA-PBS at a dilution of 1:100 and incubated overnight at 4 °C in a humidified chamber. Cells were washed with PBST and incubated with a DyLight-conjugated secondary antibody in PBS at room temperature in the dark. F-actin (red) was stained with a fluorescent red phalloidin and nuclei (blue) were stained with Hoechst or DAPI. Images were taken at a magnification of 60x.



### 14-3-3 Pan Antibody (MA5-12242) in IF

Immunofluorescent analysis of 14.3.3 pan (green) showing staining in the cytoplasm of HeLa cells. Formalin-fixed cells were permeabilized with 0.1% Triton X-100 in TBS for 5-10 minutes and blocked with 3% BSA-PBS for 30 minutes at room temperature. Cells were probed with a 14.3.3 pan monoclonal antibody (Product # MA5-12242) in 3% BSA-PBS at a dilution of 1:100 and incubated overnight at 4 °C in a humidified chamber. Cells were washed with PBST and incubated with a DyLight-conjugated secondary antibody in PBS at room temperature in the dark. F-actin (red) was stained with a fluorescent red phalloidin and nuclei (blue) were stained with Hoechst or DAPI. Images were taken at a magnification of 60x.

[View more figures on thermofisher.com](https://www.thermofisher.com)

## Immunocytochemistry (1)

American journal of physiology. Endocrinology and metabolism

### REDD1 deletion prevents dexamethasone-induced skeletal muscle atrophy.

"MA5-12242 was used in Immunoprecipitation to demonstrate in vivo that REDD1 is required for glucocorticoids-induced inhibition of protein synthesis via MTORC1 down-regulation."

Authors: Britto FA, Begue G, Rossano B, Docquier A, Vernus B, Sar C, Ferry A, Bonnieu A, Ollendorff V, Favier FB

**Species**  
Mouse

**Dilution**  
Not Cited

**Year**  
2014

## Western Blot (3)

The Journal of biological chemistry

### p53/TAp63 and AKT regulate mammalian target of rapamycin complex 1 (mTORC1) signaling through two independent parallel pathways in the presence of DNA damage.

"MA5-12242 was used in western blot to study the regulation of mTORC1 signaling in response to DNA damage and the role of p53/TAp63 and AKT pathways"

Authors: Cam M, Bid HK, Xiao L, Zambetti GP, Houghton PJ, Cam H

**Species**  
Mouse

**Dilution**  
Not Cited

**Year**  
2014

Journal of cell science

### Rescue of atypical protein kinase C in epithelia by the cytoskeleton and Hsp70 family chaperones.

"MA5-12242 was used in western blot to examine the role of atypical protein kinase C in epithelial cell asymmetry"

Authors: Mashukova A, Oriolo AS, Wald FA, Casanova ML, Kröger C, Magin TM, Omary MB, Salas PJ

**Species**  
Human

**Dilution**  
Not Cited

**Year**  
2009

[View more WB references on thermofisher.com](#)

## Immunoprecipitation (3)

Methods in molecular biology (Clifton, N.J.)

### mTOR activity under hypoxia.

"MA5-12242 was used in immunoprecipitation and western blot to study the effects of hypoxia on the activity of mTOR"

Authors: Vadysirisack DD, Ellisen LW

**Species**  
Mouse

**Dilution**  
1 ug/mg protein

**Year**  
2012

[View more IP references on thermofisher.com](#)

## More applications with references on thermofisher.com

For Research Use Only. Not for use in diagnostic procedures. Not for resale without express authorization. Products are warranted to operate or perform substantially in conformance with published Product specifications in effect at the time of sale, as set forth in the Production documentation, specifications and/or accompanying package inserts ("Documentation"). No claim of suitability for use in applications regulated by FDA is made. The warranty provided herein is valid only when used by properly trained individuals. Unless otherwise stated in the Documentation, this warranty is limited to one year from date of shipment when the Product is subjected to normal, proper and intended usage. This warranty does not extend to anyone other than the Buyer. Any model or sample furnished to Buyer is merely illustrative of the general type and quality of goods and does not represent that any Product will conform to such model or sample. NO OTHER WARRANTIES, EXPRESS OR IMPLIED, ARE GRANTED INCLUDING WITHOUT LIMITATION, IMPLIED WARRANTIES OF MERCHANTABILITY, FITNESS FOR ANY PARTICULAR PURPOSE, OR NON INFRINGEMENT. BUYER'S EXCLUSIVE REMEDY FOR NON-CONFORMING PRODUCTS DURING THE WARRANTY PERIOD IS LIMITED TO REPAIR, REPLACEMENT OF OR REFUND FOR THE NON-CONFORMING PRODUCT(S) AT SELLER'S SOLE OPTION. THERE IS NO OBLIGATION TO REPAIR, REPLACE OR REFUND FOR PRODUCTS AS THE RESULT OF (I) ACCIDENT, DISASTER OR EVENT OF FORCE MAJEURE, (II) MISUSE, FAULT OR NEGLIGENCE OF OR BY BUYER, (III) USE OF THE PRODUCTS IN A MANNER FOR WHICH THEY WERE NOT DESIGNED, OR (IV) IMPROPER STORAGE AND HANDLING OF THE PRODUCTS. Unless otherwise expressly stated on the Product or in the documentation accompanying the Product, the Product is intended for research only and is not to be used for any other purpose, including without limitation, unauthorized commercial uses, in vitro diagnostic uses, ex vivo or in vivo therapeutic uses, or any type of consumption by or application to human or animals.