

alpha Synuclein Monoclonal Antibody (Syn 211)

Product Details	
Size	500 µL
Species Reactivity	Human, Rat
Published Species	Human, Mouse
Host/Isotype	Mouse / IgG1
Class	Monoclonal
Type	Antibody
Clone	Syn 211
Conjugate	Unconjugated
Immunogen	Human recombinant alpha-synuclein
Form	Liquid
Concentration	0.2 mg/mL
Purification	Protein G
Storage buffer	PBS, pH 7.4, with 0.2% BSA
Contains	0.09% sodium azide
Storage conditions	4° C
RRID	AB_10978319

Applications	Tested Dilution	Publications
Western Blot (WB)	1 µg/mL	7 Publications
Immunohistochemistry (IHC)	-	5 Publications
Immunohistochemistry (Paraffin) (IHC (P))	1:200-1:400	-
Immunocytochemistry (ICC/IF)	1:20-1:200	6 Publications
Immunoprecipitation (IP)	Assay-dependent	-
in situ PLA (PLA)	-	1 Publication
Miscellaneous PubMed (Misc)	-	1 Publication

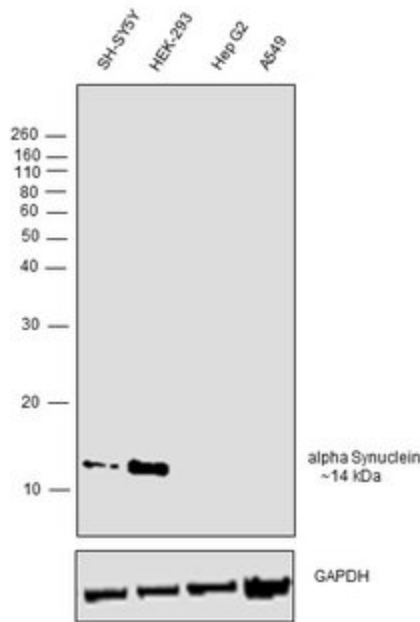
Product Specific Information

MA5-12272 targets Synuclein in IHC (P), ICC/IF, IP, and WB applications and shows reactivity with Human and Rat samples.

The MA5-12272 immunogen is human recombinant alpha-synuclein.

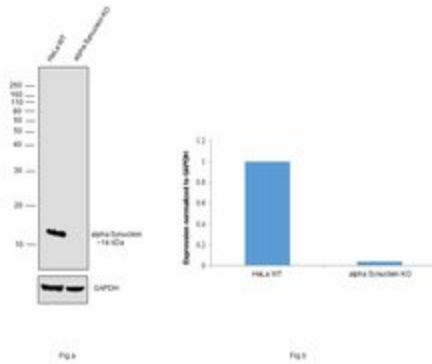
alpha Synuclein Antibody (MA5-12272)

Antibody specificity was demonstrated by detection of differential basal expression of the target across cells owing to their inherent genetic constitution. Relative expression of alpha Synuclein was observed in SH-SY5Y and HEK-293 cells but not in Hep G2 and A549 cells using alpha Synuclein Monoclonal Antibody (Product # MA5-12272) in western blot.. Relative expression validation info.

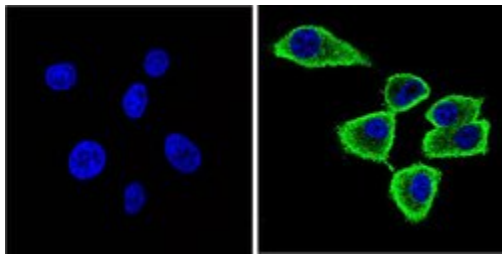


alpha Synuclein Antibody (MA5-12272)

Antibody specificity was demonstrated by CRISPR-Cas9 mediated knockout of alpha Synuclein. A loss of signal was observed for alpha Synuclein in the KO cell line compared to control cell line using Anti- alpha Synuclein Monoclonal Antibody (Product # MA5-12272).. Knockout validation info.



Product Images For alpha Synuclein Monoclonal Antibody (Syn 211)



alpha Synuclein Antibody (MA5-12272) in ICC/IF

Immunofluorescent analysis of Synuclein (green) showing staining in the cytoplasm and membrane of U87-MG cells. Formalin-fixed cells were permeabilized with 0.1% Triton X-100 in TBS for 5-10 minutes and blocked with 3% BSA-PBS for 30 minutes at room temperature. Cells were probed with a Synuclein monoclonal antibody (Product # MA5-12272) in 3% BSA-PBS at a dilution of 1:100 and incubated overnight at 4 °C in a humidified chamber. Cells were washed with PBST and incubated with a DyLight-conjugated secondary antibody in PBS at room temperature in the dark. F-actin (red) was stained with a fluorescent red phalloidin and nuclei (blue) were stained with Hoechst or DAPI. Images were taken at a magnification of 60x.

[View more figures on thermofisher.com](https://www.thermofisher.com)

Western Blot (7)

Cell death & disease

Alpha-synuclein is involved in manganese-induced spatial memory and synaptic plasticity impairments via TrkB/Akt/Fyn-mediated phosphorylation of NMDA receptors.

"MA5-12272 was used in Western Blotting to whether Mn-dependent enhanced alpha-synuclein expression accounts for interference with BDNF/TrkB signaling."

Authors: Ma Z,Liu K,Li XR,Wang C,Liu C,Yan DY,Deng Y,Liu W,Xu B

Species
Mouse
Not Applicable

Dilution
1:500
Not Cited

Year
2020

Movement disorders : official journal of the Movement Disorder Society

Cortical phosphorylated -Synuclein levels correlate with brain wave spectra in Parkinson's disease.

"MA5-12272 was used in western blot to analyze the correlation between brain wave spectra in Parkinson's disease and cortical phosphorylated alpha-synuclein levels"

Authors: Caviness JN,Lue LF,Hentz JG,Schmitz CT,Adler CH,Shill HA,Sabbagh MN,Beach TG,Walker DG

Species
Not Applicable

Dilution
Not Cited

Year
2016

[View more WB references on thermofisher.com](#)

Immunohistochemistry (5)

Frontiers in immunology

Alpha-Synuclein in the Regulation of Brain Endothelial and Perivascular Cells: Gaps and Future Perspectives.

"MA5-12272 was used in Immunocytochemistry to summarize the main findings supporting how -synuclein can affect ECs and/or BAMs function as well as their interplay and effect on other cells in the brain perivascular environment in physiological and pathological conditions."

Authors: Bogale TA,Faustini G,Longhena F,Mitola S,Pizzi M,Bellucci A

Species
Human
Not Applicable

Dilution
1:500
Not Cited

Year
2021

International journal of molecular sciences

Dopamine Transporter/-Synuclein Complexes Are Altered in the Post Mortem Caudate Putamen of Parkinson's Disease: An In Situ Proximity Ligation Assay Study.

"Published figure using alpha Synuclein monoclonal antibody (Product # MA5-12272) in Proximity Ligation Assay (PLA)"

Authors: Longhena F,Faustini G,Missale C,Pizzi M,Bellucci A

Species
Human

Dilution
1:100

Year
2018

[View more IHC references on thermofisher.com](#)

More applications with references on thermofisher.com

ICC/IF (6)

PLA (1)

Misc (1)

For Research Use Only. Not for use in diagnostic procedures. Not for resale without express authorization. Products are warranted to operate or perform substantially in conformance with published Product specifications in effect at the time of sale, as set forth in the Production documentation, specifications and/or accompanying package inserts ("Documentation"). No claim of suitability for use in applications regulated by FDA is made. The warranty provided herein is valid only when used by properly trained individuals. Unless otherwise stated in the Documentation, this warranty is limited to one year from date of shipment when the Product is subjected to normal, proper and intended usage. This warranty does not extend to anyone other than the Buyer. Any model or sample furnished to Buyer is merely illustrative of the general type and quality of goods and does not represent that any Product will conform to such model or sample. NO OTHER WARRANTIES, EXPRESS OR IMPLIED, ARE GRANTED INCLUDING WITHOUT LIMITATION, IMPLIED WARRANTIES OF MERCHANTABILITY, FITNESS FOR ANY PARTICULAR PURPOSE, OR NON INFRINGEMENT. BUYER'S EXCLUSIVE REMEDY FOR NON-CONFORMING PRODUCTS DURING THE WARRANTY PERIOD IS LIMITED TO REPAIR, REPLACEMENT OF OR REFUND FOR THE NON-CONFORMING PRODUCT(S) AT SELLER'S SOLE OPTION. THERE IS NO OBLIGATION TO REPAIR, REPLACE OR REFUND FOR PRODUCTS AS THE RESULT OF (I) ACCIDENT, DISASTER OR EVENT OF FORCE MAJEURE, (II) MISUSE, FAULT OR NEGLIGENCE OF OR BY BUYER, (III) USE OF THE PRODUCTS IN A MANNER FOR WHICH THEY WERE NOT DESIGNED, OR (IV) IMPROPER STORAGE AND HANDLING OF THE PRODUCTS. Unless otherwise expressly stated on the Product or in the documentation accompanying the Product, the Product is intended for research only and is not to be used for any other purpose, including without limitation, unauthorized commercial uses, in vitro diagnostic uses, ex vivo or in vivo therapeutic uses, or any type of consumption by or application to human or animals.