

SLC5A5 Monoclonal Antibody (FP5A)

Product Details	
Size	500 µL
Species Reactivity	Human
Published Species	Rat, Human
Host/Isotope	Mouse / IgG1, kappa
Class	Monoclonal
Type	Antibody
Clone	FP5A
Conjugate	Unconjugated
Immunogen	A synthetic peptide corresponding to aa625-643 of hNIS protein
Form	Liquid
Concentration	0.2 mg/mL
Purification	Protein G
Storage buffer	PBS, pH 7.4, with 0.2% BSA
Contains	15mM sodium azide
Storage Conditions	4° C
RRID	AB_10977040

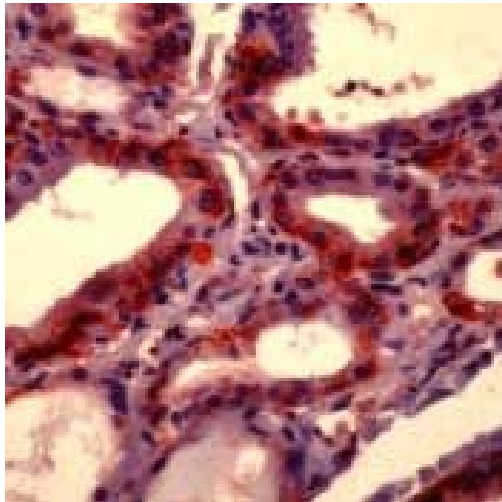
Applications	Tested	Dilution	Published
Immunocytochemistry (ICC)	-	1:150	3 Publications
Miscellaneous PubMed (MISC)	-	1:450	1 Publication
Immunohistochemistry (Paraffin) (IHC (P))	✓	1:400-800	1 Publication
Western Blot (WB)	✓	Assay Dependent	5 Publications
Immunohistochemistry (IHC)	-	1:200	2 Publications

Product Specific Information

MA5-12308 targets Sodium Iodide Symporter in IHC (P) and WB applications and shows reactivity with Human samples.

The MA5-12308 immunogen is a synthetic peptide corresponding to aa625-643 of hNIS protein.

Product Images For SLC5A5 Monoclonal Antibody (FP5A)



SLC5A5 Antibody (MA5-12308) in IHC

Formalin-fixed, paraffin-embedded human thyroid gland stained with Sodium Iodide Symporter antibody using peroxidase-conjugate and AEC chromogen. Note cytoplasmic staining of follicular epithelium.

12 References

Immunocytochemistry (3)

Experimental oncology

Correlation of iodine symporter expression in highly and low malignant cell lines of human breast cancer differed in their sensitivity to doxorubicin.

"MA512308 was used in immunocytochemistry to study the relationship between sodium/iodide symporter expression and human breast cancer cell lines with different sensitivity to doxorubicin"

Authors: Lukianova NY,Andriiv AV,Chekhun VF

Species
Human

Dilution
1:150

Year
2016

Breast cancer research and treatment

The pan-DAC inhibitor LBH589 is a multi-functional agent in breast cancer cells: cytotoxic drug and inducer of sodium-iodide symporter (NIS).

"MA5-12308 was used in immunocytochemistry to investigate the effect of LBH589 on breast cancer cells and its mechanism"

Authors: Fortunati N,Catalano MG,Marano F,Mugoni V,Pugliese M,Bosco O,Mainini F,Bocuzzi G

Species
Human

Dilution
1:1000

Year
2010

[View more ICC references on thermofisher.com](#)

Miscellaneous PubMed (1)

Experimental eye research

Upregulation of sodium iodide symporter (NIS) protein expression by an innate immunity component: Promising potential for targeting radiosensitive retinoblastoma.

"MA5-12308 was used in western blot to discuss methods to treat retinoblastoma"

Authors: Samuel J,Singh N,Kanwar JR,Krishnakumar S,Kanwar RK

Species
Human

Dilution
1:450

Year
2015

Immunohistochemistry (Paraffin) (1)

Annals of nuclear medicine

Detailed assessment of gene activation levels by multiple hypoxia-responsive elements under various hypoxic conditions.

"MA5-12308 was used in immunohistochemistry - paraffin section to assess gene activation under various hypoxic conditions in vivo."

Authors: Takeuchi Y,Inubushi M,Jin YN,Murai C,Tsuji AB,Hata H,Kitagawa Y,Saga T

Species
Not Applicable

Dilution
Not Cited

Year
2014

More applications with references on thermofisher.com

WB (5)

IHC (2)

For Research Use Only. Not for use in diagnostic procedures. Not for resale without express authorization. Products are warranted to operate or perform substantially in conformance with published Product specifications in effect at the time of sale, as set forth in the Production documentation, specifications and/or accompanying package inserts ("Documentation"). No claim of suitability for use in applications regulated by FDA is made. The warranty provided herein is valid only when used by properly trained individuals. Unless otherwise stated in the Documentation, this warranty is limited to one year from date of shipment when the Product is subjected to normal, proper and intended usage. This warranty does not extend to anyone other than the Buyer. Any model or sample furnished to Buyer is merely illustrative of the general type and quality of goods and does not represent that any Product will conform to such model or sample. NO OTHER WARRANTIES, EXPRESS OR IMPLIED, ARE GRANTED INCLUDING WITHOUT LIMITATION, IMPLIED WARRANTIES OF MERCHANTABILITY, FITNESS FOR ANY PARTICULAR PURPOSE, OR NON INFRINGEMENT. BUYER'S EXCLUSIVE REMEDY FOR NON-CONFORMING PRODUCTS DURING THE WARRANTY PERIOD IS LIMITED TO REPAIR, REPLACEMENT OF OR REFUND FOR THE NON-CONFORMING PRODUCT(S) AT SELLER'S SOLE OPTION. THERE IS NO OBLIGATION TO REPAIR, REPLACE OR REFUND FOR PRODUCTS AS THE RESULT OF (I) ACCIDENT, DISASTER OR EVENT OF FORCE MAJEURE, (II) MISUSE, FAULT OR NEGLIGENCE OF OR BY BUYER, (III) USE OF THE PRODUCTS IN A MANNER FOR WHICH THEY WERE NOT DESIGNED, OR (IV) IMPROPER STORAGE AND HANDLING OF THE PRODUCTS. Unless otherwise expressly stated on the Product or in the documentation accompanying the Product, the Product is intended for research only and is not to be used for any other purpose, including without limitation, unauthorized commercial uses, in vitro diagnostic uses, ex vivo or in vivo therapeutic uses, or any type of consumption by or application to human or animals.