

EpCAM Monoclonal Antibody (323/A3)

Product Details	
Size	500 µL
Species Reactivity	Human, Mouse
Published Species	Rat, Human, Mouse
Host/Isotype	Mouse / IgG1, kappa
Class	Monoclonal
Type	Antibody
Clone	323/A3
Conjugate	Unconjugated
Immunogen	MCF-7 human breast cancer cells
Form	Liquid
Concentration	0.2 mg/mL
Purification	Protein A/G
Storage buffer	PBS, pH 7.4, with 0.05% BSA
Contains	0.05% sodium azide
Storage conditions	4° C
RRID	AB_10981962

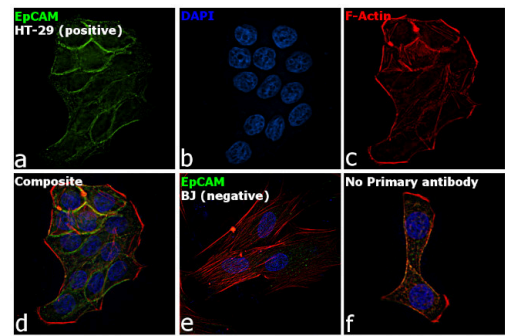
Applications	Tested Dilution	Publications
Western Blot (WB)	-	1 Publication
Immunohistochemistry (IHC)	-	4 Publications
Immunohistochemistry (Paraffin) (IHC (P))	1-2 µg/mL	2 Publications
Immunocytochemistry (ICC/IF)	1:10-1:200	6 Publications
Flow Cytometry (Flow)	0.5-1 µg/test	2 Publications
Radioimmune Assays (RIA)	Assay-dependent	-
Miscellaneous PubMed (Misc)	-	1 Publication

Product Specific Information

MA5-12436 targets Epithelial Specific Antigen in FACS, ICC/IF, IHC (P), and RIA applications and shows reactivity with Human and Mouse samples.

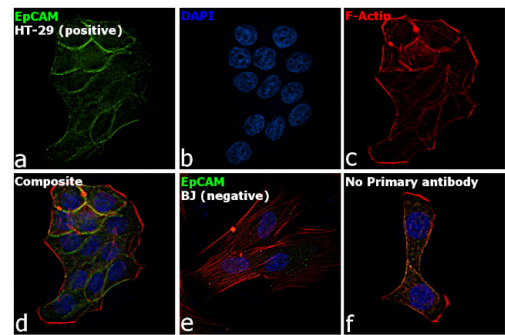
The MA5-12436 immunogen is mCF-7 human breast cancer cells.

Product Images For EpCAM Monoclonal Antibody (323/A3)



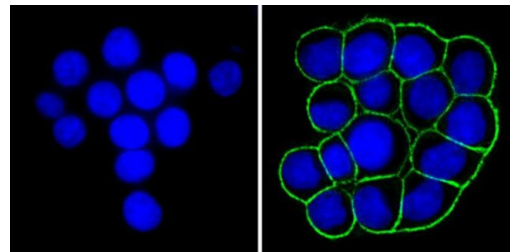
EpCAM Antibody (MA5-12436)

Antibody specificity was demonstrated by detection of differential basal expression of the target across cell lines tested owing to their inherent genetic constitution. Relative expression of EpCAM was observed in HT-29 cells in plasma membrane, which is a positive model for EpCAM expression, in comparison to BJ (null for EpCAM expression) using Anti-EpCAM Mouse Monoclonal Antibody (Product # MA5-12436) in immunofluorescence. {RE}



EpCAM Antibody (MA5-12436) in ICC/IF

Immunofluorescence analysis of EpCAM was performed using HT-29 and BJ cells. The cells were fixed with 4% paraformaldehyde for 10 minutes, permeabilized with 0.1% Triton™ X-100 for 15 minutes, and blocked with 2% BSA for 1 hour at room temperature. The cells were labeled with EpCAM Mouse Monoclonal Antibody (Product # MA5-12436) at 1:100 dilution in 0.1% BSA and incubated overnight at 4 degree and then labeled with Goat anti-Mouse IgG (H+L) Superclonal™ Recombinant Secondary Antibody, Alexa Fluor® 488 (Product # A28175) at a dilution of 1:2000 for 45 minutes at room temperature (Panel a: green) in HT-29 cells. Nuclei (Panel b: blue) were stained with ProLong™ Diamond Antifade Mountant with DAPI (Product # P36962). F-actin (Panel c: red) was stained with Rhodamine Phalloidin (Product # R415, 1:300). Panel d represents the merged image of HT-29 cells, which is a positive model for EpCAM expression showing a plasma membrane localization. Panel e represents the merged image of BJ cells, that are null for EpCAM protein expression. Panel f represents control cells with no primary antibody to assess background. The images were captured at 60X magnification.



EpCAM Antibody (MA5-12436) in ICC/IF

Immunofluorescent analysis of Epithelial Specific Antigen (green) showing staining in the membrane of HT29 cells (right) compared to a negative control without primary antibody (left). Formalin-fixed cells were permeabilized with 0.1% Triton X-100 in TBS for 5-10 minutes and blocked with 3% BSA-PBS for 30 minutes at room temperature. Cells were probed with an Epithelial Specific Antigen monoclonal antibody (Product # MA5-12436) in 3% BSA-PBS at a dilution of 1:100 and incubated overnight at 4 °C in a humidified chamber. Cells were washed with PBST and incubated with a DyLight-conjugated secondary antibody in PBS at room temperature in the dark. F-actin (red) was stained with a fluorescent red phalloidin and nuclei (blue) were stained with Hoechst or DAPI. Images were taken at a magnification of 100x.

[View more figures on thermofisher.com](#)

Western Blot (1)

<p>Journal of immunotherapy (Hagerstown, Md. : 1997)</p> <p>EpCAM-specific vaccine response by modified antigen and chimeric costimulatory molecule in cynomolgus monkeys.</p> <p>"MA5-12436 was used in western blot to examine a novel costimulatory adjuvant for tumor immuno therapy"</p> <p>Authors: Neighbors M,Apt D,Chang JC,Brinkman A,Sipos-Solman I,Ong R,Leong S,Punnonen J</p>	<p>Year 2008</p> <p>Species Human</p>
--	---

Immunohistochemistry (4)

<p>Molecular pain</p> <p>Contribution of TRESK two-pore domain potassium channel to bone cancer-induced spontaneous pain and evoked cutaneous pain in rats.</p> <p>"MA5-12436 was used in Immunohistochemistry-immunofluorescence to suggest that the differential distribution and decreased expression of TRESK in the periosteum and skin, which is attributed to the lack of IB4+ fibers innervation within the periosteum of the tibia, probably contribute to the behavioral divergence of cancer-induced spontaneous pain and evoked pain in bone cancer rats."</p> <p>Authors: Liu JP,Jing HB,Xi K,Zhang ZX,Jin ZR,Cai SQ,Tian Y,Cai J,Xing GG</p>	<p>Year 2022</p> <p>Species Rat</p> <p>Dilution 1:500</p>
<p>International journal of molecular sciences</p> <p>KRAS and EGFR Mutations Differentially Alter ABC Drug Transporter Expression in Cisplatin-Resistant Non-Small Cell Lung Cancer.</p> <p>"MA5-12436 was used in Immunohistochemistry to confirm that, in lung AC-s, KRAS and EGFR driver mutations differentially affect both drug transporter expression and the cisplatin-induced WNT signalling microenvironment."</p> <p>Authors: Jaromi L,Csongei V,Vesel M,Abdelwahab EMM,Soltani A,Torok Z,Smuk G,Sarosi V,Pongracz JE</p>	<p>Year 2021</p> <p>Species Human</p> <p>Dilution 1:50</p>

[View more IHC references on thermofisher.com](#)

Immunohistochemistry (Paraffin) (2)

<p>Cellular and molecular gastroenterology and hepatology</p> <p>Human Fetal-Derived Enterospheres Provide Insights on Intestinal Development and a Novel Model to Study Necrotizing Enterocolitis (NEC).</p> <p>"MA5-12436 was used in Immunohistochemistry on paraffin embedded tissues-immunofluorescence to study how to use human fetal organoids to gain insights into necrotising enterocolitis pathogenesis."</p> <p>Authors: Senger S,Ingano L,Freire R,Anselmo A,Zhu W,Sadreyev R,Walker WA,Fasano A</p>	<p>Year 2022</p> <p>Species Human</p> <p>Dilution 1:100</p>
---	---

More applications with references on thermofisher.com

- ICC/IF (6)
- Flow (2)
- Misc (1)

For Research Use Only. Not for use in diagnostic procedures. Not for resale without express authorization. Products are warranted to operate or perform substantially in conformance with published Product specifications in effect at the time of sale, as set forth in the Production documentation, specifications and/or accompanying package inserts ("Documentation"). No claim of suitability for use in applications regulated by FDA is made. The warranty provided herein is valid only when used by properly trained individuals. Unless otherwise stated in the Documentation, this warranty is limited to one year from date of shipment when the Product is subjected to normal, proper and intended usage. This warranty does not extend to anyone other than the Buyer. Any model or sample furnished to Buyer is merely illustrative of the general type and quality of goods and does not represent that any Product will conform to such model or sample. NO OTHER WARRANTIES, EXPRESS OR IMPLIED, ARE GRANTED INCLUDING WITHOUT LIMITATION, IMPLIED WARRANTIES OF MERCHANTABILITY, FITNESS FOR ANY PARTICULAR PURPOSE, OR NON INFRINGEMENT. BUYER'S EXCLUSIVE REMEDY FOR NON-CONFORMING PRODUCTS DURING THE WARRANTY PERIOD IS LIMITED TO REPAIR, REPLACEMENT OF OR REFUND FOR THE NON-CONFORMING PRODUCT(S) AT SELLER'S SOLE OPTION. THERE IS NO OBLIGATION TO REPAIR, REPLACE OR REFUND FOR PRODUCTS AS THE RESULT OF (I) ACCIDENT, DISASTER OR EVENT OF FORCE MAJEURE, (II) MISUSE, FAULT OR NEGLIGENCE OF OR BY BUYER, (III) USE OF THE PRODUCTS IN A MANNER FOR WHICH THEY WERE NOT DESIGNED, OR (IV) IMPROPER STORAGE AND HANDLING OF THE PRODUCTS. Unless otherwise expressly stated on the Product or in the documentation accompanying the Product, the Product is intended for research only and is not to be used for any other purpose, including without limitation, unauthorized commercial uses, in vitro diagnostic uses, ex vivo or in vivo therapeutic uses, or any type of consumption by or application to human or animals.