

# Progesterone Receptor Monoclonal Antibody (hPRa 7)

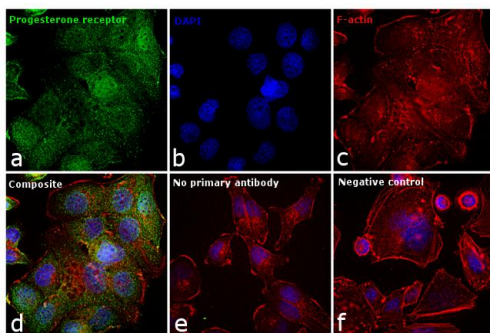
Product Details	
Size	500 µL
Species Reactivity	Human, Mouse, Non-human primate, Rat
Published Species	Rat, Human, Mouse
Host/Isotope	Mouse / IgG1, kappa
Class	Monoclonal
Type	Antibody
Clone	hPRa 7
Conjugate	Unconjugated
Immunogen	PgR from a human endometrial carcinoma (EnCa 101) grown in athymic mice
Form	Liquid
Concentration	0.2 mg/mL
Purification	Protein G
Storage buffer	PBS, pH 7.4, with 0.2% BSA
Contains	0.09% sodium azide
Storage Conditions	4° C
RRID	AB_11000632

Applications	Tested	Dilution	Published
Immunohistochemistry (IHC)	-		17 Publications
Immunohistochemistry (Paraffin) (IHC (P))	-		2 Publications
Western Blot (WB)	✓	1-2 µg/mL	6 Publications
ChIP assay (ChIP)	-		1 Publication
Immunocytochemistry (ICC)	✓	1:50	2 Publications
Flow Cytometry (Flow)	-		1 Publication
ELISA (ELISA)	-	1.5 ug/ml	1 Publication
Immunofluorescence (IF)	✓	1:50	
Immunoprecipitation (IP)	✓	2 µg/mL	

## Product Specific Information

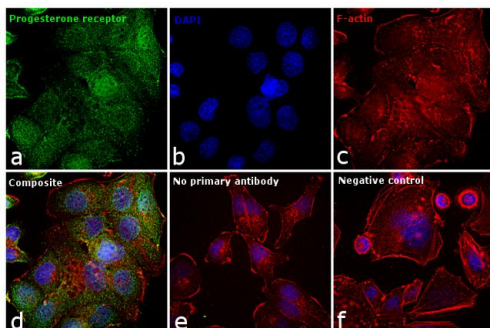
MA5-12658 targets Progesterone Receptor in IF, IP, and WB applications and shows reactivity with Human, mouse, Non-human primate, and Rat samples.

The MA5-12658 immunogen is pgR from a human endometrial carcinoma (EnCa 101) grown in athymic mice.



### Progesterone Receptor Antibody (MA5-12658)

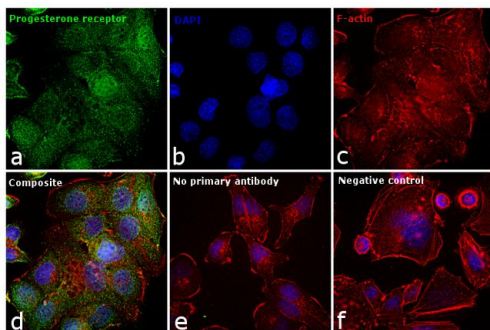
Antibody specificity was demonstrated by detection of differential basal expression of the target across cell lines owing to their inherent genetic constitution. Expression of Progesterone receptor was observed in T-47D as opposed to SK-BR-3 cell line using Progesterone Receptor Monoclonal Antibody (hPRa 7) (Product # MA5-12658) in ICC. Relative expression validation info.



### Progesterone Receptor Antibody (MA5-12658)

Antibody specificity was demonstrated by detection of differential basal expression of the target across cell lines owing to their inherent genetic constitution. Expression of Progesterone receptor was observed in T-47D as opposed to SK-BR-3 cell line using Progesterone Receptor Monoclonal Antibody (hPRa 7) (Product # MA5-12658) in ICC. Relative expression validation info.

## Product Images For Progesterone Receptor Monoclonal Antibody (hPRa 7)



### Progesterone Receptor Antibody (MA5-12658) in IF

Immunofluorescence analysis of Progesterone receptor was performed using 70% confluent log phase T-47D cells. The cells were fixed with 4% paraformaldehyde for 10 minutes, permeabilized with 0.1% Triton™ X-100 for 15 minutes, and blocked with 1% BSA for 1 hour at room temperature. The cells were labeled with Progesterone Receptor Monoclonal Antibody (hPRa 7) (Product # MA5-12658) at 1:50 dilution in 0.1% BSA, incubated at 4 degree celsius overnight and then labeled with Goat anti-Mouse IgG (H+L) Superclonal™ Secondary Antibody, Alexa Fluor® 488 conjugate (Product # A28175) at a dilution of 1:2000 for 45 minutes at room temperature (Panel a: green). Nuclei (Panel b: blue) were stained with SlowFade® Gold Antifade Mountant with DAPI (Product # S36938). F-actin (Panel c: red) was stained with Rhodamine Phalloidin (Product # R415, 1:300). Panel d represents the merged image showing cytoplasmic and nuclear localization. Panel e represents control cells with no primary antibody to assess background. Panel f shows the negative model, SK-BR-3, that does not express Progesterone receptor. The images were captured at 60X magnification.

View more figures on [thermofisher.com](https://thermofisher.com)

## 30 References

### Immunohistochemistry (17)

#### Scientific reports

#### Progesterone Receptors in Prostate Cancer: Progesterone receptor B is the isoform associated with disease progression.

Authors: Grindstad T, Richardsen E, Andersen S, Skjefstad K, Rakae Khanekhenari M, Donnem T, Ness N, Nordby Y, Bremnes RM, Al-Saad S, Busund LT

**Species**  
Human

**Dilution**  
Not Cited

**Year**  
2018

#### Breast cancer research : BCR

#### Amphiregulin mediates progesterone-induced mammary ductal development during puberty.

"MA5-12658 was used in immunohistochemistry to study the modulation of pubertal progesterone-induced development of the mammary ducts by amphiregulin"

Authors: Aupperlee MD, Leipprandt JR, Bennett JM, Schwartz RC, Haslam SZ

**Species**  
Mouse

**Dilution**  
1:50

**Year**  
2013

[View more IHC references on thermofisher.com](#)

### Immunohistochemistry (Paraffin) (2)

#### Stem cell reports

#### RANK Signaling Amplifies WNT-Responsive Mammary Progenitors through R-SPONDIN1.

"MA5-12658 was used in immunohistochemistry - paraffin section to propose that RANK dictates WNT responsiveness to hormone-induced changes in adult mammary cells"

Authors: Joshi PA, Waterhouse PD, Kannan N, Narala S, Fang H, Di Grappa MA, Jackson HW, Penninger JM, Eaves C, Khokha R

**Species**  
Mouse

**Dilution**  
Not Cited

**Year**  
2015

#### Cell death and disease

#### Tip30 controls differentiation of murine mammary luminal progenitor to estrogen receptor-positive luminal cell through regulating FoxA1 expression.

"MA5-12658 was used in immunohistochemistry - paraffin section to study how Tip30 regulates FoxA1 expression and the differentiation of murine mammary luminal progenitor to estrogen receptor-positive luminal cell"

Authors: Chen F, Li A, Gao S, Hollern D, Williams M, Liu F, VanSickle EA, Andrechek E, Zhang C, Yang C, Luo R, Xiao H

**Species**  
Not Applicable

**Dilution**  
1:50

**Year**  
2014

### More applications with references on thermofisher.com

WB (6)

ChIP (1)

ICC (2)

Flow (1)

ELISA (1)

For Research Use Only. Not for use in diagnostic procedures. Not for resale without express authorization. Products are warranted to operate or perform substantially in conformance with published Product specifications in effect at the time of sale, as set forth in the Production documentation, specifications and/or accompanying package inserts ("Documentation"). No claim of suitability for use in applications regulated by FDA is made. The warranty provided herein is valid only when used by properly trained individuals. Unless otherwise stated in the Documentation, this warranty is limited to one year from date of shipment when the Product is subjected to normal, proper and intended usage. This warranty does not extend to anyone other than the Buyer. Any model or sample furnished to Buyer is merely illustrative of the general type and quality of goods and does not represent that any Product will conform to such model or sample. NO OTHER WARRANTIES, EXPRESS OR IMPLIED, ARE GRANTED INCLUDING WITHOUT LIMITATION, IMPLIED WARRANTIES OF MERCHANTABILITY, FITNESS FOR ANY PARTICULAR PURPOSE, OR NON INFRINGEMENT. BUYER'S EXCLUSIVE REMEDY FOR NON-CONFORMING PRODUCTS DURING THE WARRANTY PERIOD IS LIMITED TO REPAIR, REPLACEMENT OF OR REFUND FOR THE NON-CONFORMING PRODUCT(S) AT SELLER'S SOLE OPTION. THERE IS NO OBLIGATION TO REPAIR, REPLACE OR REFUND FOR PRODUCTS AS THE RESULT OF (I) ACCIDENT, DISASTER OR EVENT OF FORCE MAJEURE, (II) MISUSE, FAULT OR NEGLIGENCE OF OR BY BUYER, (III) USE OF THE PRODUCTS IN A MANNER FOR WHICH THEY WERE NOT DESIGNED, OR (IV) IMPROPER STORAGE AND HANDLING OF THE PRODUCTS. Unless otherwise expressly stated on the Product or in the documentation accompanying the Product, the Product is intended for research only and is not to be used for any other purpose, including without limitation, unauthorized commercial uses, in vitro diagnostic uses, ex vivo or in vivo therapeutic uses, or any type of consumption by or application to human or animals.