

EGFR Monoclonal Antibody (528), Biotin

Product Details

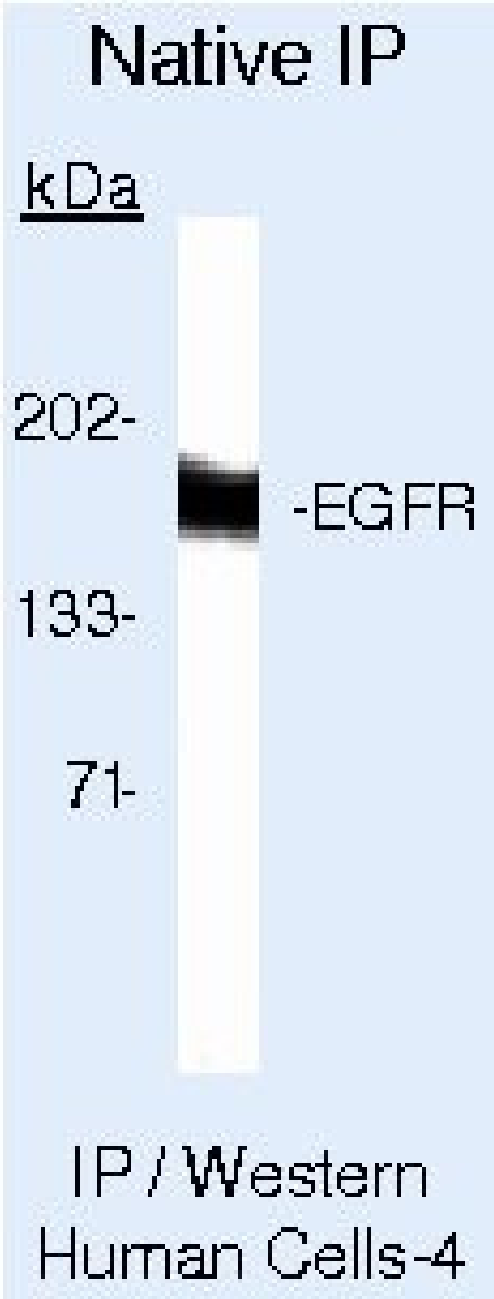
Size	500 µL
Species Reactivity	Dog, Human
Published Species	Rat, Non-human primate, Mouse, Human
Host/Isotype	Mouse / IgG2a
Class	Monoclonal
Type	Antibody
Clone	528
Conjugate	Biotin
Immunogen	Purified EGFR from A431 cells
Form	Liquid
Concentration	0.2 mg/mL
Purification	Protein A
Storage buffer	PBS, pH 7.4, with 0.2% BSA
Contains	0.09% sodium azide
Storage conditions	4° C
RRID	AB_10980304

Applications	Tested Dilution	Publications
Western Blot (WB)	-	5 Publications
Immunohistochemistry (IHC)	-	1 Publication
Immunocytochemistry (ICC/IF)	-	4 Publications
Flow Cytometry (Flow)	Assay-dependent	7 Publications
ELISA (ELISA)	-	1 Publication
Immunoprecipitation (IP)	Assay-dependent	17 Publications
ChIP assay (ChIP)	-	1 Publication
Neutralization (Neu)	-	2 Publications

Product Specific Information

MA5-12872 targets Epidermal Growth Factor Receptor in FACS and IP applications and shows reactivity with Canine and Human samples.

The MA5-12872 immunogen is purified EGFR from A431 cells.



EGFR Antibody (MA5-12872) in IP
Immunoprecipitation of Epidermal Growth Factor Receptor using Epidermal Growth Factor Receptor Monoclonal Antibody (Product # MA5-12872) on Native Human A431 Cells.

Western Blot (5)

<p>Oncogene</p> <p>Surfactant protein D suppresses lung cancer progression by downregulation of epidermal growth factor signaling.</p> <p>"MA5-12872 was used in immunoprecipitation and western blot to study the role of impaired EGF binding to EGFR in the mechanism by which surfactant protein D inhibits the progression of lung cancer"</p> <p>Authors: Hasegawa Y,Takahashi M,Ariki S,Asakawa D,Tajiri M,Wada Y,Yamaguchi Y,Nishitani C,Takamiya R,Saito A,Uehara Y,Hashimoto J,Kurimura Y,Takahashi H,Kuroki Y</p>	<p>Year 2015</p> <p>Species Human</p>
<p>Lab on a chip</p> <p>High speed digital protein interaction analysis using microfluidic single molecule detection system.</p> <p>"MA5-12872 was used in western blot to study the use of a microfluidic single molecule detection system for the rapid analysis of protein interactions"</p> <p>Authors: Chou CK,Jing N,Yamaguchi H,Tsou PH,Lee HH,Chen CT,Wang YN,Hong S,Su C,Kameoka J,Hung MC</p>	<p>Year 2010</p> <p>Species Human</p>

View more WB references on thermofisher.com

Immunohistochemistry (1)

<p>Journal of cellular physiology</p> <p>Potential localization of putative stem/progenitor cells in human bulbar conjunctival epithelium.</p> <p>"MA5-12872 was used in immunohistochemistry to study the expression pattern of stem cells in the bulbar conjunctival epithelium"</p> <p>Authors: Qi H,Zheng X,Yuan X,Pflugfelder SC,Li DQ</p>	<p>Year 2010</p> <p>Species Human</p>
---	---

Immunocytochemistry (4)

<p>PLoS biology</p> <p>Direct visualization of single-molecule membrane protein interactions in living cells.</p> <p>"MA5-12872 was used in Flow cytometry/Cell sorting to develop a co-immunoimmobilisation assay enabling the direct observation of membrane protein interactions in single living cells that overcomes the limitations of currently prevalent proximity-based indirect methods."</p> <p>Authors: Kim DH,Park S,Kim DK,Jeong MG,Noh J,Kwon Y,Zhou K,Lee NK,Ryu SH</p>	<p>Year 2018</p> <p>Species Mouse</p>
---	---

View more ICC/IF references on thermofisher.com

More applications with references on thermofisher.com

- Flow (7)
- ELISA (1)
- IP (17)
- ChIP (1)
- Neu (2)

For Research Use Only. Not for use in diagnostic procedures. Not for resale without express authorization. Products are warranted to operate or perform substantially in conformance with published Product specifications in effect at the time of sale, as set forth in the Production documentation, specifications and/or accompanying package inserts ("Documentation"). No claim of suitability for use in applications regulated by FDA is made. The warranty provided herein is valid only when used by properly trained individuals. Unless otherwise stated in the Documentation, this warranty is limited to one year from date of shipment when the Product is subjected to normal, proper and intended usage. This warranty does not extend to anyone other than the Buyer. Any model or sample furnished to Buyer is merely illustrative of the general type and quality of goods and does not represent that any Product will conform to such model or sample. NO OTHER WARRANTIES, EXPRESS OR IMPLIED, ARE GRANTED INCLUDING WITHOUT LIMITATION, IMPLIED WARRANTIES OF MERCHANTABILITY, FITNESS FOR ANY PARTICULAR PURPOSE, OR NON-INFRINGEMENT. BUYER'S EXCLUSIVE REMEDY FOR NON-CONFORMING PRODUCTS DURING THE WARRANTY PERIOD IS LIMITED TO REPAIR, REPLACEMENT OF OR REFUND FOR THE NON-CONFORMING PRODUCT(S) AT SELLER'S SOLE OPTION. THERE IS NO OBLIGATION TO REPAIR, REPLACE OR REFUND FOR PRODUCTS AS THE RESULT OF (i) ACCIDENT, DISASTER OR EVENT OF FORCE MAJEURE, (ii) MISUSE, FAULT OR NEGLIGENCE OF OR BY BUYER, (iii) USE OF THE PRODUCTS IN A MANNER FOR WHICH THEY WERE NOT DESIGNED, OR (iv) IMPROPER STORAGE AND HANDLING OF THE PRODUCTS. Unless otherwise expressly stated on the Product or in the documentation accompanying the Product, the Product is intended for research only and is not to be used for any other purpose, including without limitation, unauthorized commercial uses, in vitro diagnostic uses, ex vivo or in vivo therapeutic uses, or any type of consumption by or application to human or animals.