

# Collagen II Monoclonal Antibody (6B3)

Product Details	
Size	500 µL
Species Reactivity	Amphibian, Chicken, Human, Mouse
Published Species	Rabbit, Bovine, Human, Mouse
Host/Isotope	Mouse / IgG1
Class	Monoclonal
Type	Antibody
Clone	6B3
Conjugate	Unconjugated
Immunogen	Purified type II collagen; obtained from the adult chicken sternum by limited pepsinization
Form	Liquid
Concentration	0.2 mg/mL
Purification	Protein G
Storage buffer	PBS, pH 7.4, with 0.2% BSA
Contains	0.09% sodium azide
Storage Conditions	4° C
RRID	AB_10979392

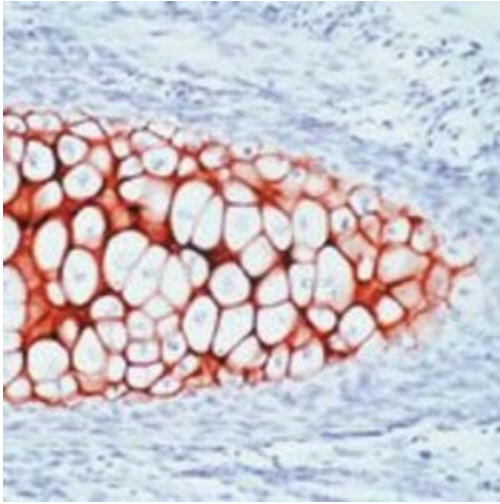
Applications	Tested Dilution	Publications
Immunofluorescence (IF)	Assay Dependent	-
Immunohistochemistry (Paraffin) (IHC (P))	1-2 µg/mL	1 Publication
Immunocytochemistry (ICC)	-	5 Publications
Immunohistochemistry (IHC)	-	18 Publications
Western Blot (WB)	-	2 Publications

## Product Specific Information

MA5-13026 targets Collagen II in IF and IHC (P) applications and shows reactivity with Amphibian, Chicken, Human, and mouse samples.

The MA5-13026 immunogen is purified type II collagen; obtained from the adult chicken sternum by limited pepsinization.

## Product Images For Collagen II Monoclonal Antibody (6B3)



### Collagen II Antibody (MA5-13026) in IHC

Formalin-fixed, paraffin-embedded human fetus stained with Collagen II antibody using peroxidase-conjugate and AEC chromogen. Note staining of matrix in the cartilaginous plates.

## Immunocytochemistry (5)

### JCI insight

#### Site-1 protease deficiency causes human skeletal dysplasia due to defective inter-organelle protein trafficking.

"MA5-13026 was used in Immunohistochemistry-immunofluorescence to define a new congenital human skeletal disorder and reveal that site-1 protease is particularly required for skeletal development in humans."

Authors: Kondo Y, Fu J, Wang H, Hoover C, McDaniel JM, Steet R, Patra D, Song J, Pollard L, Cathey S, Yago T, Wiley G, Macwana S, Guthridge J, McGee S, Li S, Griffin C, Furukawa K, James JA, Ruan C, McEver RP, Wierenga KJ, Gaffney PM, Xia L

**Species**  
Human

**Dilution**  
Not Cited

**Year**  
2018

### PLoS one

#### Origins and properties of dental, thymic, and bone marrow mesenchymal cells and their stem cells.

"MA5-13026 was used in immunocytochemistry to study the origins and characteristics of dental, thymic, and bone marrow mesenchymal cells and the corresponding stem cells"

Authors: Komada Y, Yamane T, Kadota D, Isono K, Takakura N, Hayashi S, Yamazaki H

**Species**  
Mouse

**Dilution**  
Not Cited

**Year**  
2013

[View more ICC references on thermofisher.com](#)

## Immunohistochemistry (Paraffin) (1)

### Stem cell research and therapy

#### Chondrogenic induction of mesenchymal stromal/stem cells from Wharton's jelly embedded in alginate hydrogel and without added growth factor: an alternative stem cell source for cartilage tissue engineering.

"MA5-13026 was used in immunohistochemistry - paraffin section to study the use of mesenchymal stromal/stem cells from Wharton's jelly for cartilage tissue engineering"

Authors: Reppel L, Schiavi J, Charif N, Leger L, Yu H, Pinzano A, Henrionnet C, Stoltz JF, Bensoussan D, Huselstein C

**Species**  
Human

**Dilution**  
1:100

**Year**  
2015

## Immunohistochemistry (18)

### Arthroscopy : the journal of arthroscopic and related surgery : official publication of the Arthroscopy Association of North America and the International Arthroscopy Association

#### Supplementation with platelet-rich plasma improves the in vitro formation of tissue-engineered cartilage with enhanced mechanical properties.

"MA5-13026 was used in immunohistochemistry to study the beneficial effects of platelet-rich plasma supplementation in the generation of tissue-engineered cartilage"

Authors: Petrera M, De Croos JN, lu J, Hurtig M, Kandel RA, Theodoropoulos JS

**Species**  
Bovine

**Dilution**  
1:100

**Year**  
2013

[View more IHC references on thermofisher.com](#)

## More applications with references on thermofisher.com

## WB (2)

For Research Use Only. Not for use in diagnostic procedures. Not for resale without express authorization. Products are warranted to operate or perform substantially in conformance with published Product specifications in effect at the time of sale, as set forth in the Production documentation, specifications and/or accompanying package inserts ("Documentation"). No claim of suitability for use in applications regulated by FDA is made. The warranty provided herein is valid only when used by properly trained individuals. Unless otherwise stated in the Documentation, this warranty is limited to one year from date of shipment when the Product is subjected to normal, proper and intended usage. This warranty does not extend to anyone other than the Buyer. Any model or sample furnished to Buyer is merely illustrative of the general type and quality of goods and does not represent that any Product will conform to such model or sample. NO OTHER WARRANTIES, EXPRESS OR IMPLIED, ARE GRANTED INCLUDING WITHOUT LIMITATION, IMPLIED WARRANTIES OF MERCHANTABILITY, FITNESS FOR ANY PARTICULAR PURPOSE, OR NON INFRINGEMENT. BUYER'S EXCLUSIVE REMEDY FOR NON-CONFORMING PRODUCTS DURING THE WARRANTY PERIOD IS LIMITED TO REPAIR, REPLACEMENT OF OR REFUND FOR THE NON-CONFORMING PRODUCT(S) AT SELLER'S SOLE OPTION. THERE IS NO OBLIGATION TO REPAIR, REPLACE OR REFUND FOR PRODUCTS AS THE RESULT OF (I) ACCIDENT, DISASTER OR EVENT OF FORCE MAJEURE, (II) MISUSE, FAULT OR NEGLIGENCE OF OR BY BUYER, (III) USE OF THE PRODUCTS IN A MANNER FOR WHICH THEY WERE NOT DESIGNED, OR (IV) IMPROPER STORAGE AND HANDLING OF THE PRODUCTS. Unless otherwise expressly stated on the Product or in the documentation accompanying the Product, the Product is intended for research only and is not to be used for any other purpose, including without limitation, unauthorized commercial uses, in vitro diagnostic uses, ex vivo or in vivo therapeutic uses, or any type of consumption by or application to human or animals.

