

# EGFR Monoclonal Antibody (EGFR.1), Biotin

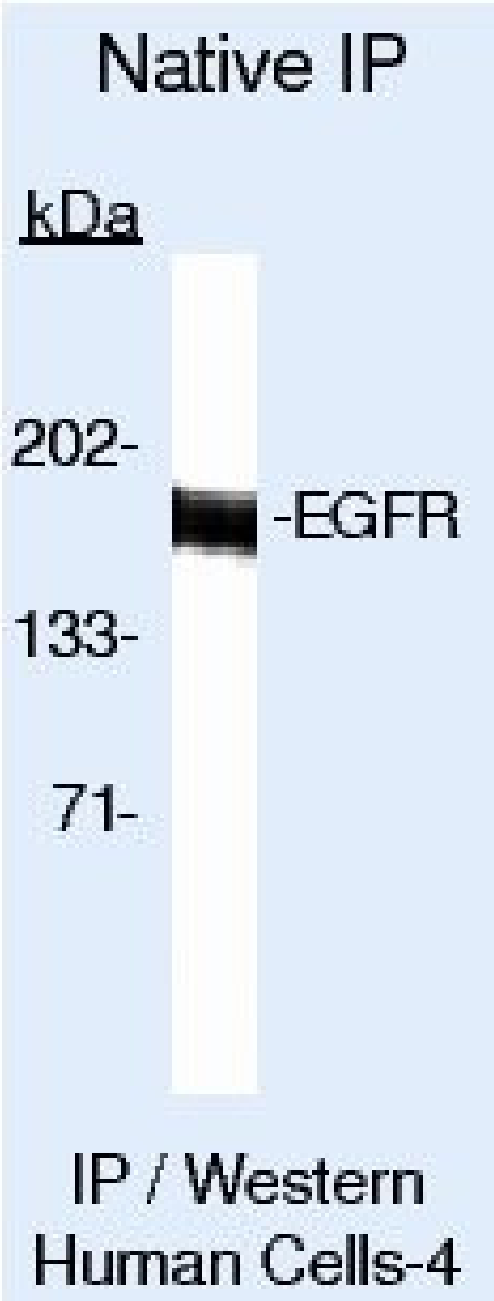
Product Details	
Size	500 µL
Species Reactivity	Horse, Human
Published Species	Human
Host/Isotype	Mouse / IgG2b, kappa
Class	Monoclonal
Type	Antibody
Clone	EGFR.1
Conjugate	Biotin
Immunogen	A431 human epidermoid cells
Form	Liquid
Concentration	0.2 mg/mL
Purification	Protein A
Storage buffer	PBS, pH 7.4, with 0.2% BSA
Contains	0.09% sodium azide
Storage conditions	4° C
RRID	AB_10979102

Applications	Tested Dilution	Publications
Immunohistochemistry (IHC)	-	5 Publications
Immunohistochemistry (Frozen) (IHC (F))	Assay-dependent	-
Immunocytochemistry (ICC/IF)	-	8 Publications
Flow Cytometry (Flow)	Assay-dependent	4 Publications
Immunoprecipitation (IP)	2 µg/mL	1 Publication
Neutralization (Neu)	-	2 Publications

## Product Specific Information

MA5-13045 targets Epidermal Growth Factor Receptor in FACS, IF, IHC (F), and IP applications and shows reactivity with Equine and Human samples.

The MA5-13045 immunogen is a431 human epidermoid cells.



**EGFR Antibody (MA5-13045) in IP**  
Immunoprecipitation of Epidermal Growth Factor Receptor using Epidermal Growth Factor Receptor Monoclonal Antibody (Product # MA5-13045) on Native Human A431 Cells.

Immunohistochemistry (5)

<b>Cancer</b> <b>Molecular classification system identifies invasive breast carcinoma patients who are most likely and those who are least likely to achieve a complete pathologic response after neoadjuvant chemotherapy.</b> "MA5-13045 was used in immunohistochemistry to investigate the sub-classification invasive breast carcinoma patients and its prognostic significance" Authors: Goldstein NS,Decker D,Severson D,Schell S,Vicini F,Margolis J,Dekhne NS	<b>Year</b> 2007  <b>Species</b> Human  <b>Dilution</b> 1:25
<b>Human pathology</b> <b>Abnormal beta-catenin expression in oral cancer with no gene mutation: correlation with expression of cyclin D1 and epidermal growth factor receptor, Ki-67 labeling index, and clinicopathological features.</b> "MA5-13045 was used in immunohistochemistry to study beta-catenin expression in oral cancer" Authors: Odajima T,Sasaki Y,Tanaka N,Kato-Mori Y,Asanuma H,Ikeda T,Satoh M,Hiratsuka H,Tokino T,Sawada N	<b>Year</b> 2005  <b>Species</b> Human  <b>Dilution</b> 1:100

[View more IHC references on thermofisher.com](#)

Immunocytochemistry (8)

<b>Traffic (Copenhagen, Denmark)</b> <b>A chimeric pre-ubiquitinated EGF receptor is constitutively endocytosed in a clathrin-dependent, but kinase-independent manner.</b> "MA5-13045 was used in immunocytochemistry and immunohistochemistry to study the roles of EGFR kinase activity and ubiquitination in EGFR endocytosis" Authors: Bertelsen V,Sak MM,Breen K,Rødland MS,Johannessen LE,Traub LM,Stang E,Madshus IH	<b>Year</b> 2011  <b>Species</b> Human
<b>The journal of histochemistry and cytochemistry : official journal of the Histochemistry Society</b> <b>The constitutive activity of epidermal growth factor receptor vIII leads to activation and differential trafficking of wild-type epidermal growth factor receptor and erbB2.</b> "MA5-13045 was used in immunocytochemistry to investigate the effect of the constitutive activity of EGFRvIII on wild-type EGFR and erbB2 in OVCA 433 cells" Authors: Zeineldin R,Ning Y,Hudson LG	<b>Year</b> 2010  <b>Species</b> Human  <b>Dilution</b> 1:100

[View more ICC/IF references on thermofisher.com](#)

More applications with references on thermofisher.com

- Flow (4)
- IP (1)
- Neu (2)

For Research Use Only. Not for use in diagnostic procedures. Not for resale without express authorization. Products are warranted to operate or perform substantially in conformance with published Product specifications in effect at the time of sale, as set forth in the Production documentation, specifications and/or accompanying package inserts ("Documentation"). No claim of suitability for use in applications regulated by FDA is made. The warranty provided herein is valid only when used by properly trained individuals. Unless otherwise stated in the Documentation, this warranty is limited to one year from date of shipment when the Product is subjected to normal, proper and intended usage. This warranty does not extend to anyone other than the Buyer. Any model or sample furnished to Buyer is merely illustrative of the general type and quality of goods and does not represent that any Product will conform to such model or sample. NO OTHER WARRANTIES, EXPRESS OR IMPLIED, ARE GRANTED INCLUDING WITHOUT LIMITATION, IMPLIED WARRANTIES OF MERCHANTABILITY, FITNESS FOR ANY PARTICULAR PURPOSE, OR NON INFRINGEMENT. BUYER'S EXCLUSIVE REMEDY FOR NON-CONFORMING PRODUCTS DURING THE WARRANTY PERIOD IS LIMITED TO REPAIR, REPLACEMENT OF OR REFUND FOR THE NON-CONFORMING PRODUCT(S) AT SELLER'S SOLE OPTION. THERE IS NO OBLIGATION TO REPAIR, REPLACE OR REFUND FOR PRODUCTS AS THE RESULT OF (i) ACCIDENT, DISASTER OR EVENT OF FORCE MAJEURE, (ii) MISUSE, FAULT OR NEGLIGENCE OF OR BY BUYER, (iii) USE OF THE PRODUCTS IN A MANNER FOR WHICH THEY WERE NOT DESIGNED, OR (iv) IMPROPER STORAGE AND HANDLING OF THE PRODUCTS. Unless otherwise expressly stated on the Product or in the documentation accompanying the Product, the Product is intended for research only and is not to be used for any other purpose, including without limitation, unauthorized commercial uses, in vitro diagnostic uses, ex vivo or in vivo therapeutic uses, or any type of consumption by or application to human or animals.