

CD20 Monoclonal Antibody (L26)

Product Details

Size	500 µL
Species Reactivity	Human
Published Species	Human, Mouse
Host/Isotype	Mouse / IgG2a, kappa
Class	Monoclonal
Type	Antibody
Clone	L26
Conjugate	Unconjugated
Immunogen	Human tonsil B cells
Form	Liquid
Concentration	0.2 mg/mL
Purification	Protein A/G
Storage buffer	10mM PBS with 0.05% BSA
Contains	0.05% sodium azide
Storage conditions	4° C
RRID	AB_10983209

Applications	Tested Dilution	Publications
Western Blot (WB)	1:1,000-1:5,000	-
Immunohistochemistry (IHC)	-	47 Publications
Immunohistochemistry (Paraffin) (IHC (P))	1:250	7 Publications
Immunohistochemistry (Frozen) (IHC (F))	-	1 Publication
Immunocytochemistry (ICC/IF)	1:100	4 Publications
Flow Cytometry (Flow)	1:2	1 Publication
Miscellaneous PubMed (Misc)	-	2 Publications

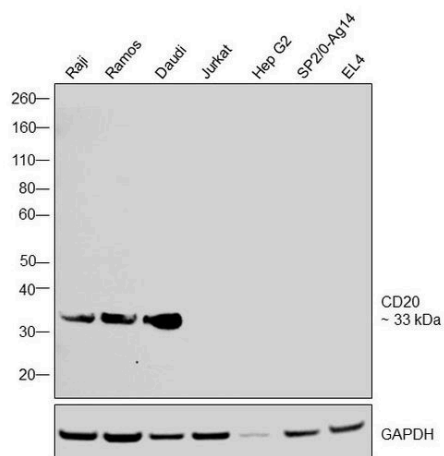
Product Specific Information

This product is recommended for qualitative immunohistochemistry with normal and neoplastic formalin-fixed, paraffin-embedded tissues, to be viewed by light microscopy. Staining requires boiling tissue in 10mM citrate buffer, pH 6.0, for 10-20 min followed by cooling at room temperature for 20 min. This antibody will not cross-react with cow, dog, pig or rat.

Product Images For CD20 Monoclonal Antibody (L26)

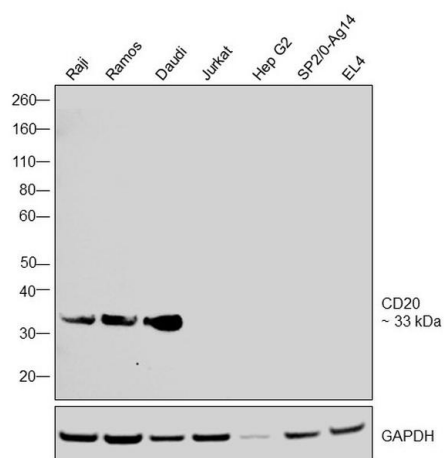
CD20 Antibody (MA5-13141)

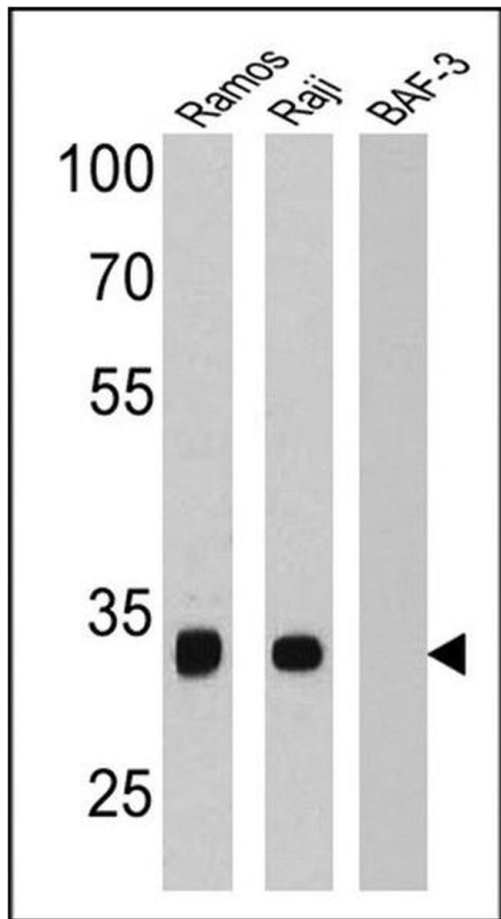
Antibody specificity was demonstrated by detection of differential basal expression of the target across cell models owing to their inherent genetic constitution. Relative expression of CD20 was observed in Raji, Ramos, Daudi compared to Jurkat and Hep G2 using Anti-CD20 Monoclonal Antibody (L26) (Product # MA5-13141) in Western Blot. {RE}



CD20 Antibody (MA5-13141) in WB

Western blot was performed using Anti-CD20 Monoclonal Antibody (L26) (Product # MA5-13141) and a 33 kDa band corresponding to CD20 was observed across relevant cell lines tested. Membrane enriched extracts (40 µg lysate) of Raji (Lane 1), Ramos (Lane 2), Daudi (Lane 3), Jurkat (Lane 4), Hep G2 (Lane 5), Sp2/0-Ag14 (Lane 6), EL4 (Lane 7) were electrophoresed using NuPAGE™ 4-12% Bis-Tris Protein Gel (Product # NP0321BOX). Resolved proteins were then transferred onto a Nitrocellulose membrane (Product # IB23001) by iBlot® 2 Dry Blotting System (Product # IB21001). The blot was probed with the primary antibody (1:1000 dilution) and detected by chemiluminescence with Goat anti-Mouse IgG (H+L) Superclonal™ Recombinant Secondary Antibody, HRP (Product # A28177, 1:4000 dilution) using the iBright FL 1000 (Product # A32752). Chemiluminescent detection was performed using SuperSignal™ West Dura Extended Duration Substrate (Product # 34076).





CD20 Antibody (MA5-13141) in WB

Western blot analysis of CD20 was performed by loading 25 µg of Ramos (Lane 1), Raji (Lane 2), and BAF-3 (Lane 3) cell lysates and a molecular weight protein ladder onto an SDS polyacrylamide gel. Proteins were transferred to a PVDF membrane and blocked with a blocking buffer at 4°C overnight. The membrane was probed with a CD20 monoclonal antibody (Product # MA5-13141) at a dilution of 1:1000 overnight at 4°C, washed in TBST, and probed with an HRP-conjugated secondary antibody for 1 hr at room temperature in the dark. Results show a band at 33 kDa in Raji and Ramos cell lysates.

[View more figures on thermofisher.com](https://www.thermofisher.com)

Immunohistochemistry (47)

Cancer immunology research	Year 2022
Checkpoint Blockade-Induced Dermatitis and Colitis Are Dominated by Tissue-Resident Memory T Cells and Th1/Tc1 Cytokines.	Species Human
"MA5-13141 was used in Immunohistochemistry to show that the Th1-skewed phenotype was confirmed in irAE colitis cases compared to healthy colon."	
Authors: Reschke R,Shapiro JW,Yu J,Rouhani SJ,Olson DJ,Zha Y,Gajewski TF	
Genes	Year 2022
Single-Cell Transcriptomic Analysis of the Mouse Pancreas: Characteristic Features of Pancreatic Ductal Cells in Chronic Pancreatitis.	Species Mouse
"MA5-13141 was used in Immunohistochemistry to provide a preliminary description of the single-cell transcriptome profiles of mouse pancreata and accurately demonstrates the characteristics of pancreatic ductal cells in CP."	
Authors: Mao X,Mao S,Wang L,Jiang H,Deng S,Wang Y,Ye J,Li Z,Zou W,Liao Z	

View more IHC references on thermofisher.com

Immunohistochemistry (Paraffin) (7)

Translational vision science & technology	Year 2020
Characterization of a Murine Model of Oxazolone-Induced Orbital Inflammation.	Species Mouse
"MA5-13141 was used in Immunocytochemistry to develop a murine model of orbital inflammation by injecting oxazolone into the mouse orbit."	
Authors: Amarnani D,Sanchez AV,Wong LL,Duffy BV,Ramos L,Freitag SK,Bielenberg DR,Kim LA,Lee NG	
	Dilution 1:100
Journal of hematopathology	Year 2016
A subset of low-grade B cell lymphomas with a follicular growth pattern but without a BCL2 translocation shows features suggestive of nodal marginal zone lymphoma.	Species Human
"MA513141 was used in immunohistochemistry - paraffin section to define features that distinguish follicular lymphoma without a BCL2 translocation from nodal marginal zone lymphoma"	
Authors: van den Brand M,Balagué O,van Cleef PH,Groenen PJ,Hebeda KM,de Jong D,van Krieken JH	
	Dilution 1:300

View more IHC (P) references on thermofisher.com

More applications with references on thermofisher.com

- IHC (F) (1)
- ICC/IF (4)
- Flow (1)
- Misc (2)

For Research Use Only. Not for use in diagnostic procedures. Not for resale without express authorization. Products are warranted to operate or perform substantially in conformance with published Product specifications in effect at the time of sale, as set forth in the Production documentation, specifications and/or accompanying package inserts ("Documentation"). No claim of suitability for use in applications regulated by FDA is made. The warranty provided herein is valid only when used by properly trained individuals. Unless otherwise stated in the Documentation, this warranty is limited to one year from date of shipment when the Product is subjected to normal, proper and intended usage. This warranty does not extend to anyone other than the Buyer. Any model or sample furnished to Buyer is merely illustrative of the general type and quality of goods and does not represent that any Product will conform to such model or sample. NO OTHER WARRANTIES, EXPRESS OR IMPLIED, ARE GRANTED INCLUDING WITHOUT LIMITATION, IMPLIED WARRANTIES OF MERCHANTABILITY, FITNESS FOR ANY PARTICULAR PURPOSE, OR NON-INFRINGEMENT. BUYER'S EXCLUSIVE REMEDY FOR NON-CONFORMING PRODUCTS DURING THE WARRANTY PERIOD IS LIMITED TO REPAIR, REPLACEMENT OF OR REFUND FOR THE NON-CONFORMING PRODUCT(S) AT SELLER'S SOLE OPTION. THERE IS NO OBLIGATION TO REPAIR, REPLACE OR REFUND FOR PRODUCTS AS THE RESULT OF (I) ACCIDENT, DISASTER OR EVENT OF FORCE MAJEURE, (II) MISUSE, FAULT OR NEGLIGENCE OF OR BY BUYER, (III) USE OF THE PRODUCTS IN A MANNER FOR WHICH THEY WERE NOT DESIGNED, OR (IV) IMPROPER STORAGE AND HANDLING OF THE PRODUCTS. Unless otherwise expressly stated on the Product or in the documentation accompanying the Product, the Product is intended for research only and is not to be used for any other purpose, including without limitation, unauthorized commercial uses, in vitro diagnostic uses, ex vivo or in vivo therapeutic uses, or any type of consumption by or application to human or animals.