

Cytokeratin Pan Type I/II Antibody Cocktail

Product Details	
Size	500 µL
Species Reactivity	Human, Mouse
Published Species	Dog, Rat, Non-human primate, Sheep, Fish, Zebrafish, Mouse, Human, Chicken
Host/Isotype	Mouse / IgG1
Class	Cocktail
Type	Antibody
Clone	AE1/AE3
Conjugate	Unconjugated
Immunogen	Human epidermal keratin
Form	Liquid
Concentration	0.2 mg/mL
Purification	Protein G
Storage buffer	PBS, pH 7.4, with 0.2% BSA
Contains	0.09% sodium azide
Storage conditions	4° C
RRID	AB_10983023

Applications	Tested Dilution	Publications
Western Blot (WB)	1:1,000-1:5,000	2 Publications
Immunohistochemistry (IHC)	-	76 Publications
Immunohistochemistry (Paraffin) (IHC (P))	1:50	11 Publications
Immunohistochemistry (PFA fixed) (IHC (PFA))	-	1 Publication
Immunocytochemistry (ICC/IF)	5 µg/mL	14 Publications
Miscellaneous PubMed (Misc)	-	2 Publications

Product Specific Information

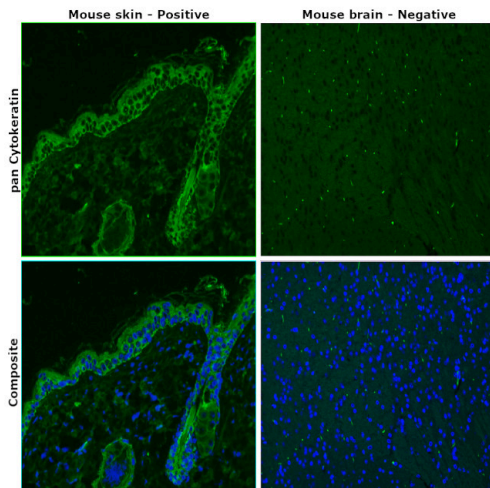
MA5-13156 targets Cytokeratin Pan in WB, IF and IHC (P) applications and shows reactivity with Bovine, Chicken, Human, mouse, Non-human primate, Rabbit, and Rat samples. This antibody is not suitable for PC12 cells in IF or WB applications.

The MA5-13156 immunogen is human epidermal keratin.

This antibody detects the acidic and basic (Type I and II) cytokeratins: Cytokeratin 1, Cytokeratin 2, Cytokeratin 3, Cytokeratin 4, Cytokeratin 5, Cytokeratin 6, Cytokeratin 7, Cytokeratin 8, Cytokeratin 10, Cytokeratin 14, Cytokeratin 15, Cytokeratin 16 and Cytokeratin 19.

Product Images For Cytokeratin Pan Type I/II Antibody Cocktail

HIER : pH 6, temp 110°C, time 20min

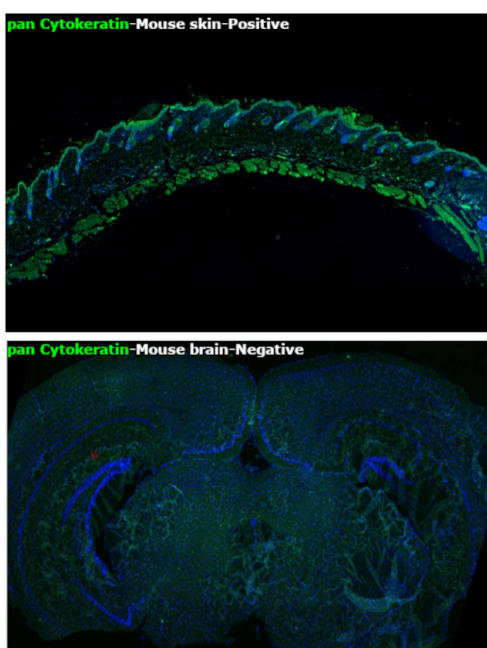
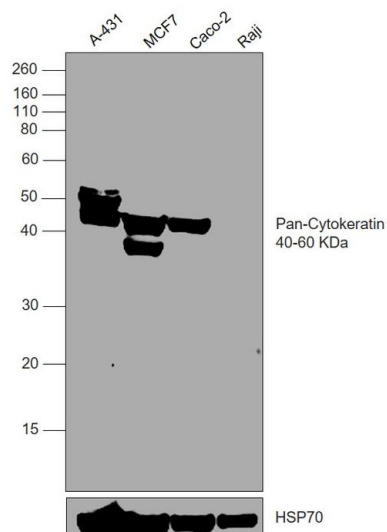


Cytokeratin Pan Type I/II Antibody (MA5-13156)

Antibody specificity was demonstrated by the relative expression of target protein in different tissues by IHC. Differential expression of pan Cytokeratin in mouse skin and mouse brain tissues using Cytokeratin Pan Type I/II Antibody Cocktail (Product # MA5-13156) shows strong staining in mouse skin tissue and no staining in mouse brain tissue. {RE}

Cytokeratin Pan Type I/II Antibody (MA5-13156) in WB

Western blot was performed using Anti-Cytokeratin Pan Type I/II Antibody Cocktail (Product # MA5-13156) and a 40-60 kDa band corresponding to Cytokeratin Pan Type I/II was observed across all tested cell lines, except Raji. Whole cell extracts (30 µg lysate) of A-431 (Lane 1), MCF7 (Lane 2), Caco-2 (Lane 3), Raji (Lane 4) were electrophoresed using NuPAGE™ 10% Bis-Tris Protein Gel (Product # NP0301BOX). Resolved proteins were then transferred onto a nitrocellulose membrane (Product # IB23002) by iBlot® 2 Dry Blotting System (Product # IB21001). The blot was probed with the primary antibody (1:1000 dilution) and detected by chemiluminescence with Goat anti-Mouse IgG (H+L) Superclonal™ Recombinant Secondary Antibody, HRP (Product # A28177, 1:10000 dilution) using the iBright™ FL1500 Imaging System (Product # A44115). Chemiluminescent detection was performed using SuperSignal™ West Pico PLUS Chemiluminescent Substrate (Product # 34580).



Cytokeratin Pan Type I/II Antibody (MA5-13156)

Antibody specificity was demonstrated by the relative expression of target protein in different tissues by IHC. Differential expression of pan Cytokeratin in mouse skin and mouse brain tissues using Cytokeratin Pan Type I/II Antibody Cocktail (Product # MA5-13156) shows strong staining in mouse skin tissue and no staining in mouse brain tissue. {RE}

106 References

Western Blot (2)

International journal of cancer

Cyclooxygenase-2 overexpression in MCF-10F human breast epithelial cells inhibits proliferation, apoptosis and differentiation, and causes partial transformation.

"MA5-13156 was used in western blot to investigate the effect of COX-2 overexpression on inhibiting proliferation, apoptosis and differentiation."

Authors: Lu S,Yu G,Zhu Y,Archer MC

Year

2005

Species

Human

Gynecologic oncology

Invasion of interstitial matrix by a novel cell line from primary peritoneal carcinosarcoma, and by established ovarian carcinoma cell lines: role of cell-matrix adhesion molecules, proteinases, and E-cadherin expression.

"MA5-13156 was used in western blot to study how cell-matrix interactions influence the invasive behavior of a novel, primary peritoneal carcinosarcoma cell line"

Authors: Kokenyesi R,Murray KP,Benshushan A,Huntley ED,Kao MS

Year

2003

Dilution

1:1000

Immunohistochemistry (76)

Case reports in pathology

A Previously Undescribed Presentation of Mixed Adenoneuroendocrine Carcinoma.

"MA513156 was used in immunohistochemistry to discuss a case of mixed adenoneuroendocrine carcinoma of stomach with tubular adenoma and well-differentiated neuroendocrine tumor in the primary tumor in the stomach"

Authors: De Luca-Johnson J,Zenali M

Year

2022

Species

Human

Cancer research communications

Stromal FAP Expression is Associated with MRI Visibility and Patient Survival in Prostate Cancer.

"MA5-13156 was used in Immunohistochemistry to compare stromal variables between MRI-visible lesions, invisible lesions, and benign tissue and assessed the predictive significance for biochemical recurrence (BCR) and disease-specific survival (DSS) using Cox regression and log-rank analysis."

Authors: Pellinen T,Sandeman K,Blom S,Turkki R,Hemmes A,Välimäki K,Eineluoto J,Kenttämies A,Nordling S,Kallioniemi O,Rannikko A,Mirtti T

Year

2022

Species

Human

Dilution

1:100

View more IHC references on thermofisher.com

More applications with references on thermofisher.com

- IHC (P) (11)
- IHC (PFA) (1)
- ICC/IF (14)
- Misc (2)

For Research Use Only. Not for use in diagnostic procedures. Not for resale without express authorization. Products are warranted to operate or perform substantially in conformance with published Product specifications in effect at the time of sale, as set forth in the Production documentation, specifications and/or accompanying package inserts ("Documentation"). No claim of suitability for use in applications regulated by FDA is made. The warranty provided herein is valid only when used by properly trained individuals. Unless otherwise stated in the Documentation, this warranty is limited to one year from date of shipment when the Product is subjected to normal, proper and intended usage. This warranty does not extend to anyone other than the Buyer. Any model or sample furnished to Buyer is merely illustrative of the general type and quality of goods and does not represent that any Product will conform to such model or sample. NO OTHER WARRANTIES, EXPRESS OR IMPLIED, ARE GRANTED INCLUDING WITHOUT LIMITATION, IMPLIED WARRANTIES OF MERCHANTABILITY, FITNESS FOR ANY PARTICULAR PURPOSE, OR NON INFRINGEMENT. BUYER'S EXCLUSIVE REMEDY FOR NON-CONFORMING PRODUCTS DURING THE WARRANTY PERIOD IS LIMITED TO REPAIR, REPLACEMENT OF OR REFUND FOR THE NON-CONFORMING PRODUCT(S) AT SELLER'S SOLE OPTION. THERE IS NO OBLIGATION TO REPAIR, REPLACE OR REFUND FOR PRODUCTS AS THE RESULT OF (I) ACCIDENT, DISASTER OR EVENT OF FORCE MAJEURE, (II) MISUSE, FAULT OR NEGLIGENCE OF OR BY BUYER, (III) USE OF THE PRODUCTS IN A MANNER FOR WHICH THEY WERE NOT DESIGNED, OR (IV) IMPROPER STORAGE AND HANDLING OF THE PRODUCTS. Unless otherwise expressly stated on the Product or in the documentation accompanying the Product, the Product is intended for research only and is not to be used for any other purpose, including without limitation, unauthorized commercial uses, in vitro diagnostic uses, ex vivo or in vivo therapeutic uses, or any type of consumption by or application to human or animals.