

# Cytokeratin Pan Antibody Cocktail

## Product Details

Size	500 µL
Species Reactivity	Human, Mouse
Published Species	Fish, Human, Mouse, Guinea pig
Host/Isotope	Mouse / IgG
Class	Cocktail
Type	Antibody
Clone	PAN-CK
Conjugate	Unconjugated
Form	Liquid
Concentration	0.2 mg/mL
Purification	Protein A/G
Storage buffer	PBS, pH 7.4, with 0.2% BSA
Contains	0.09% sodium azide
Storage Conditions	4° C
RRID	AB_10942225

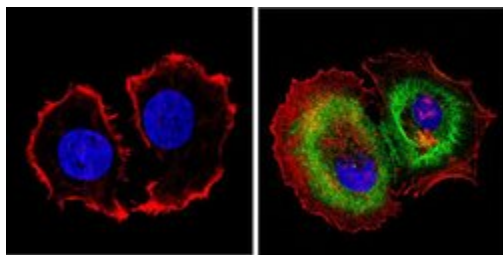
Applications	Tested Dilution	Publications
Immunocytochemistry (ICC)	1:20-1:200	6 Publications
Immunofluorescence (IF)	1:20-1:200	2 Publications
Immunohistochemistry (Paraffin) (IHC (P))	1-2 µg/mL	-
Western Blot (WB)	1:1000-1:5000	2 Publications
Immunohistochemistry (IHC)	-	5 Publications
Miscellaneous PubMed (Misc)	-	1 Publication

## Product Specific Information

This antibody is a broad-spectrum pan-keratin monoclonal antibody cocktail which recognizes keratin 4, 5, 6, 7, 8, 10, 13, 14, 18 and 19. This product can differentiate between epithelial and non-epithelial tumors.

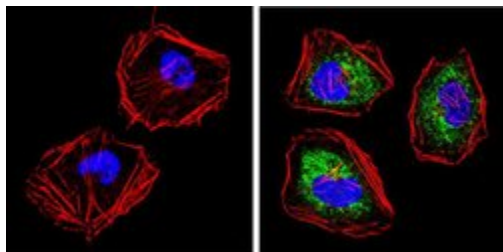
For staining of formalin-fixed tissue, digest sections with trypsin at 1 mg/mL in PBS, 10 min at 37°C, or Protease XXV at 1 mg/mL in PBS for 5 min at 37°C.

## Product Images For Cytokeratin Pan Antibody Cocktail



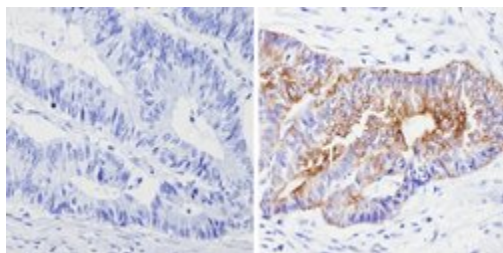
### Cytokeratin Pan Antibody (MA5-13203) in IF

Immunofluorescent analysis of Cytokeratin Pan (green) showing staining in the cytoplasm of MCF-7 cells. Formalin-fixed cells were permeabilized with 0.1% Triton X-100 in TBS for 5-10 minutes and blocked with 3% BSA-PBS for 30 minutes at room temperature. Cells were probed with a Cytokeratin Pan monoclonal antibody (Product # MA5-13203) in 3% BSA-PBS at a dilution of 1:100 and incubated overnight at 4 °C in a humidified chamber. Cells were washed with PBST and incubated with a DyLight-conjugated secondary antibody in PBS at room temperature in the dark. F-actin (red) was stained with a fluorescent red phalloidin and nuclei (blue) were stained with Hoechst or DAPI. Images were taken at a magnification of 60x.



### Cytokeratin Pan Antibody (MA5-13203) in IF

Immunofluorescent analysis of Cytokeratin Pan (green) showing staining in the cytoplasm of HeLa cells. Formalin-fixed cells were permeabilized with 0.1% Triton X-100 in TBS for 5-10 minutes and blocked with 3% BSA-PBS for 30 minutes at room temperature. Cells were probed with a Cytokeratin Pan monoclonal antibody (Product # MA5-13203) in 3% BSA-PBS at a dilution of 1:100 and incubated overnight at 4 °C in a humidified chamber. Cells were washed with PBST and incubated with a DyLight-conjugated secondary antibody in PBS at room temperature in the dark. F-actin (red) was stained with a fluorescent red phalloidin and nuclei (blue) were stained with Hoechst or DAPI. Images were taken at a magnification of 60x.



### Cytokeratin Pan Antibody (MA5-13203) in IHC (P)

Immunohistochemistry analysis of Cytokeratin Pan showing positive staining in the cytoplasm of paraffin-treated Human colon carcinoma (right) compared with a negative control in the absence of primary antibody (left). To expose target proteins, antigen retrieval method was performed using 10mM sodium citrate (pH 6.0) microwaved for 8-15 min. Following antigen retrieval, tissues were blocked in 3% H<sub>2</sub>O<sub>2</sub>-methanol for 15 min at room temperature, washed with ddH<sub>2</sub>O and PBS, and then probed with a Cytokeratin Pan monoclonal antibody (Product # MA5-13203) diluted by 3% BSA-PBS at a dilution of 1:100 overnight at 4°C in a humidified chamber. Tissues were washed extensively PBST and detection was performed using an HRP-conjugated secondary antibody followed by colorimetric detection using a DAB kit. Tissues were counterstained with hematoxylin and dehydrated with ethanol and xylene to prep for mounting.

[View more figures on thermofisher.com](https://www.thermofisher.com)

## 16 References

### Immunofluorescence (2)

International journal of oncology

#### Characterisation of mesenchymal colon tumour-derived cells in tumourspheres as a model for colorectal cancer progression.

"Published figure using Cytokeratin Pan cocktail antibody (Product # MA5-13203) in Immunofluorescence"

Authors: Turano M, Costabile V, Cerasuolo A, Duraturo F, Liccardo R, Delrio P, Pace U, Rega D, Dodaro CA, Milone M, Izzo P, De Rosa M

**Species**  
Not Applicable

**Dilution**  
Not Cited

**Year**  
2018

Oncogene

#### Keratin-associated protein 5-5 controls cytoskeletal function and cancer cell vascular invasion.

"MA513203 was used in immunocytochemistry and western blot to identify keratin-associated protein 5-5 as a driver of endothelial monolayer invasion"

Authors: Berens EB, Sharif GM, Schmidt MO, Yan G, Shuptrine CW, Weiner LM, Glasgow E, Riegel AT, Wellstein A

**Species**  
Mouse

**Dilution**  
Not Cited

**Year**  
2017

### Immunocytochemistry (6)

Journal of virology

#### A DNA Vaccine Expressing Consensus Hemagglutinin-Esterase Fusion Protein Protected Guinea Pigs from Infection by Two Lineages of Influenza D Virus.

"MA5-13203 was used in Immunohistochemistry to design a DNA vaccine expressing consensus hemagglutinin-esterase fusion protein, and test its protective efficacy against two lineages of influenza D virus in guinea pigs."

Authors: Wan Y, Kang G, Sreenivasan C, Daharsh L, Zhang J, Fan W, Wang D, Moriyama H, Li F, Li Q

**Species**  
Guinea pig

**Dilution**  
1:150

**Year**  
2018

Scientific reports

#### The molecular chaperones DNAJB6 and Hsp70 cooperate to suppress -synuclein aggregation.

"MA5-13203 was used in Western Blotting to demonstrate that a CRISPR/Cas9-mediated knockout of DNAJB6, in HEK293T cells expressing -syn, causes a massive increase in -syn aggregation."

Authors: Aprile FA, Källstig E, Limorenko G, Vendruscolo M, Ron D, Hansen C

**Species**  
Human

**Dilution**  
Not Cited

**Year**  
2017

[View more ICC references on thermofisher.com](#)

### More applications with references on thermofisher.com

WB (2)

Misc (1)

IHC (5)

For Research Use Only. Not for use in diagnostic procedures. Not for resale without express authorization. Products are warranted to operate or perform substantially in conformance with published Product specifications in effect at the time of sale, as set forth in the Production documentation, specifications and/or accompanying package inserts ("Documentation"). No claim of suitability for use in applications regulated by FDA is made. The warranty provided herein is valid only when used by properly trained individuals. Unless otherwise stated in the Documentation, this warranty is limited to one year from date of shipment when the Product is subjected to normal, proper and intended usage. This warranty does not extend to anyone other than the Buyer. Any model or sample furnished to Buyer is merely illustrative of the general type and quality of goods and does not represent that any Product will conform to such model or sample. NO OTHER WARRANTIES, EXPRESS OR IMPLIED, ARE GRANTED INCLUDING WITHOUT LIMITATION, IMPLIED WARRANTIES OF MERCHANTABILITY, FITNESS FOR ANY PARTICULAR PURPOSE, OR NON INFRINGEMENT. BUYER'S EXCLUSIVE REMEDY FOR NON-CONFORMING PRODUCTS DURING THE WARRANTY PERIOD IS LIMITED TO REPAIR, REPLACEMENT OF OR REFUND FOR THE NON-CONFORMING PRODUCT(S) AT SELLER'S SOLE OPTION. THERE IS NO OBLIGATION TO REPAIR, REPLACE OR REFUND FOR PRODUCTS AS THE RESULT OF (I) ACCIDENT, DISASTER OR EVENT OF FORCE MAJEURE, (II) MISUSE, FAULT OR NEGLIGENCE OF OR BY BUYER, (III) USE OF THE PRODUCTS IN A MANNER FOR WHICH THEY WERE NOT DESIGNED, OR (IV) IMPROPER STORAGE AND HANDLING OF THE PRODUCTS. Unless otherwise expressly stated on the Product or in the documentation accompanying the Product, the Product is intended for research only and is not to be used for any other purpose, including without limitation, unauthorized commercial uses, in vitro diagnostic uses, ex vivo or in vivo therapeutic uses, or any type of consumption by or application to human or animals.