

Cytokeratin Pan Antibody Cocktail

Product Details

| | |
|--------------------|-------------------------------------|
| Size | 500 µL |
| Species Reactivity | Human, Mouse |
| Published Species | Pig, Fish, Human, Mouse, Guinea pig |
| Host/Isotype | Mouse / IgG, kappa |
| Class | Cocktail |
| Type | Antibody |
| Clone | PAN-CK |
| Conjugate | Unconjugated |
| Immunogen | Human epidermal keratins |
| Form | Liquid |
| Concentration | 0.2 mg/mL |
| Purification | Protein A/G |
| Storage buffer | 10mM PBS, pH 7.4, with 0.05% BSA |
| Contains | 0.05% sodium azide |
| Storage conditions | 4° C |
| RRID | AB_10942225 |

| Applications | Tested Dilution | Publications |
|---|-----------------|-----------------|
| Western Blot (WB) | 1:1,000-1:5,000 | 4 Publications |
| Immunohistochemistry (IHC) | - | 14 Publications |
| Immunohistochemistry (Paraffin) (IHC (P)) | 1-2 µg/mL | - |
| Immunohistochemistry (Frozen) (IHC (F)) | - | 1 Publication |
| Immunocytochemistry (ICC/IF) | 1:20-1:200 | 12 Publications |
| Flow Cytometry (Flow) | - | 1 Publication |
| Miscellaneous PubMed (Misc) | - | 1 Publication |

Product Specific Information

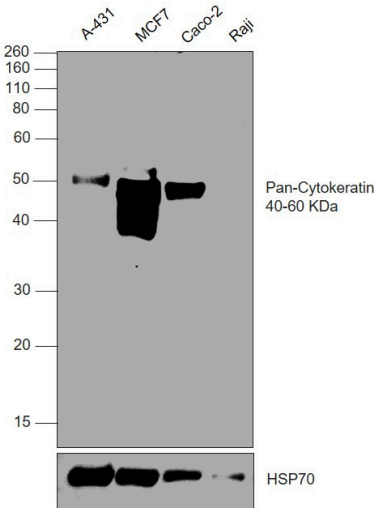
This antibody is a broad-spectrum pan-keratin monoclonal antibody cocktail which recognizes keratin 4, 5, 6, 7, 8, 10, 13, 14, 18 and 19. This product can differentiate between epithelial and non-epithelial tumors.

For staining of formalin-fixed tissue, digest sections with trypsin at 1 mg/mL in PBS, 10 min at 37°C, or Protease XXV at 1 mg/mL in PBS for 5 min at 37°C.

Product Images For Cytokeratin Pan Antibody Cocktail

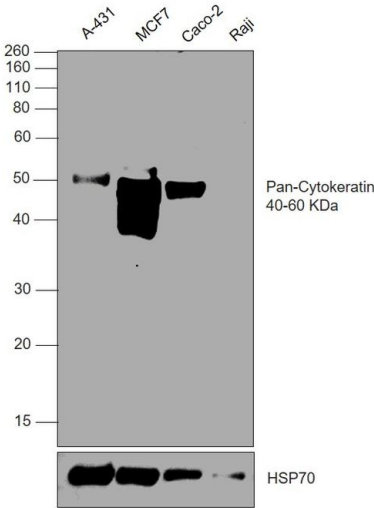
Cytokeratin Pan Antibody (MA5-13203)

Antibody specificity was demonstrated by detection of differential basal expression of the target across the tested cell lines owing to their inherent genetic constitution. Relative expression of Cytokeratin Pan was observed in all the tested cell lines, except Raji using Anti-Cytokeratin Pan Antibody Cocktail (Product # MA5-13203) in Western Blot. {RE}



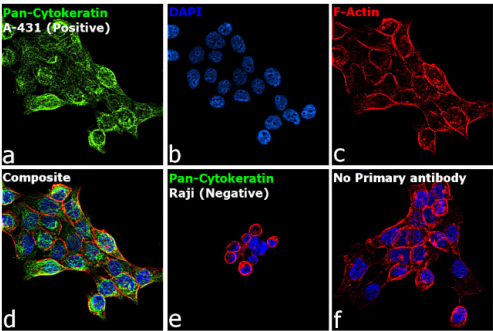
Cytokeratin Pan Antibody (MA5-13203) in WB

Western blot was performed using Anti-Cytokeratin Pan Antibody Cocktail (Product # MA5-13203) and a 40-60 kDa band corresponding to Cytokeratin Pan was observed across in all tested cell lines, except Raji. Whole cell extracts (30 µg lysate) of A-431 (Lane 1), MCF7 (Lane 2), Caco-2 (Lane 3), Raji (Lane 4) were electrophoresed using NuPAGE™ 10% Bis-Tris Protein Gel (Product # NP0301BOX). Resolved proteins were then transferred onto a nitrocellulose membrane (Product # IB23002) by iBlot® 2 Dry Blotting System (Product # IB21001). The blot was probed with the primary antibody (1:1000 dilution) and detected by chemiluminescence with Goat anti-Mouse IgG (H+L) Superclonal™ Recombinant Secondary Antibody, HRP (Product # A28177, 1:10000 dilution) using the iBright™ FL1500 Imaging System (Product # A44115). Chemiluminescent detection was performed using SuperSignal™ West Pico PLUS Chemiluminescent Substrate (Product # 34580).



Cytokeratin Pan Antibody (MA5-13203)

Antibody specificity was demonstrated by detection of differential basal expression of the target across cell models owing to their inherent genetic constitution. Immunofluorescence analysis using Anti-Cytokeratin Pan Antibody Cocktail (Product # MA5-13203), shows cytoskeletal localization of cytokeratins in A-431, with no expression seen in Raji. {RE}



View more figures on thermofisher.com

Western Blot (4)

Journal of cancer research and clinical oncology

Modelling reoxygenation effects in non-small cell lung cancer cell lines and showing epithelial-mesenchymal transition.

"MA5-13203 was used in Western Blotting to suggest that when investigating CTCs as a prognostic biomarker in NSCLC, it is also essential to take into consideration EMT status to obtain a comprehensive overview of CTCs in circulation."

Authors: Kapeleris J,Müller Bark J,Ranjit S,Richard D,Vela I,O'Byrne K,Punyadeera C

Year
2022

Species
Human

Cancer control : journal of the Moffitt Cancer Center

Establishment and Characterization of a Novel Dedifferentiated Chondrosarcoma Cell Line DDCS2.

"Published figure using Cytokeratin Pan cocktail antibody (Product # MA5-13203) in Western Blot"

Authors: Li X,Dean DC,Ferreira A,Nelson SD,Hornicek FJ,Yu S,Duan Z

Year
2022

[View more WB references on thermofisher.com](#)

Immunohistochemistry (14)

Biomedicines

Resveratrol and Its Analogue 4,4'-Dihydroxy-trans-stilbene Inhibit Lewis Lung Carcinoma Growth In Vivo through Apoptosis, Autophagy and Modulation of the Tumour Microenvironment in a Murine Model.

"MA5-13203 was used in Immunohistochemistry to conclude that Resveratrol, and its analogue 4,4'-dihydroxystilbene, could be employed to synergise with conventional oncotherapies to limit the contribution of stromal cells in tumour growth."

Authors: Savio M,Ferraresi A,Corpina C,Vandenberghe S,Scarlata C,Sottile V,Morini L,Garavaglia B,Isidoro C,Stivala LA

Year
2022

Species
Mouse

Dilution
1:100

Frontiers in immunology

Use of Single Cell Transcriptomic Techniques to Study the Role of High-Risk Human Papillomavirus Infection in Cervical Cancer.

"MA5-13203 was used in Immunohistochemistry-immunofluorescence to provide a basis for the development of a rational post-operative follow-up programme and the development of an appropriate treatment plan for patients with cervical cancer."

Authors: Meng L,Chen S,Shi G,He S,Wang Z,Shen J,Wang J,Sooranna SR,Zhao J,Song J

Year
2022

Species
Human

[View more IHC references on thermofisher.com](#)

More applications with references on thermofisher.com

IHC (F) (1)

ICC/IF (12)

Flow (1)

Misc (1)

For Research Use Only. Not for use in diagnostic procedures. Not for resale without express authorization. Products are warranted to operate or perform substantially in conformance with published Product specifications in effect at the time of sale, as set forth in the Production documentation, specifications and/or accompanying package inserts ("Documentation"). No claim of suitability for use in applications regulated by FDA is made. The warranty provided herein is valid only when used by properly trained individuals. Unless otherwise stated in the Documentation, this warranty is limited to one year from date of shipment when the Product is subjected to normal, proper and intended usage. This warranty does not extend to anyone other than the Buyer. Any model or sample furnished to Buyer is merely illustrative of the general type and quality of goods and does not represent that any Product will conform to such model or sample. NO OTHER WARRANTIES, EXPRESS OR IMPLIED, ARE GRANTED INCLUDING WITHOUT LIMITATION, IMPLIED WARRANTIES OF MERCHANTABILITY, FITNESS FOR ANY PARTICULAR PURPOSE, OR NON-INFRINGEMENT. BUYER'S EXCLUSIVE REMEDY FOR NON-CONFORMING PRODUCTS DURING THE WARRANTY PERIOD IS LIMITED TO REPAIR, REPLACEMENT OF OR REFUND FOR THE NON-CONFORMING PRODUCT(S) AT SELLER'S SOLE OPTION. THERE IS NO OBLIGATION TO REPAIR, REPLACE OR REFUND FOR PRODUCTS AS THE RESULT OF (i) ACCIDENT, DISASTER OR EVENT OF FORCE MAJEURE, (ii) MISUSE, FAULT OR NEGLIGENCE OF OR BY BUYER, (iii) USE OF THE PRODUCTS IN A MANNER FOR WHICH THEY WERE NOT DESIGNED, OR (iv) IMPROPER STORAGE AND HANDLING OF THE PRODUCTS. Unless otherwise expressly stated on the Product or in the documentation accompanying the Product, the Product is intended for research only and is not to be used for any other purpose, including without limitation, unauthorized commercial uses, in vitro diagnostic uses, ex vivo or in vivo therapeutic uses, or any type of consumption by or application to human or animals.