

PMEL Monoclonal Antibody (HMB45)

Product Details

Size	500 µL
Species Reactivity	Human
Published Species	Bovine, Human, Mouse
Host/Isotope	Mouse / IgG1, kappa
Class	Monoclonal
Type	Antibody
Clone	HMB45
Conjugate	Unconjugated
Immunogen	Extract of pigmented melanoma metastases from lymph nodes
Form	Liquid
Storage buffer	tissue culture supernatant
Contains	0.09% sodium azide
Storage Conditions	4° C
RRID	AB_10984369

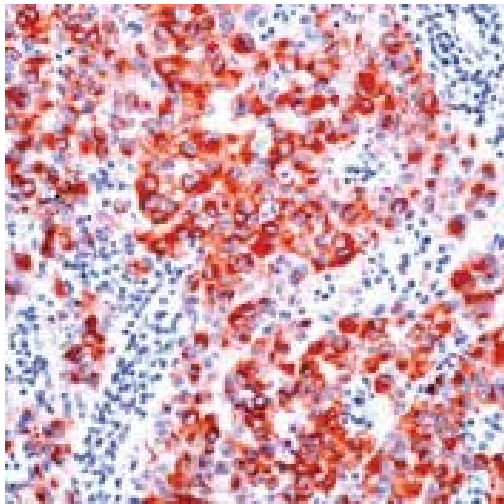
Applications	Tested	Dilution	Published
Immunocytochemistry (ICC)	-	1:40	10 Publications
Immunofluorescence (IF)	-		1 Publication
Immunohistochemistry (Frozen) (IHC (F))	-	1:150	1 Publication
Miscellaneous PubMed (MISC)	-	1:80	1 Publication
Flow Cytometry (Flow)	-		2 Publications
Western Blot (WB)	✓	1:50	5 Publications
Immunohistochemistry (IHC)	-		16 Publications
Immunohistochemistry (Paraffin) (IHC (P))	✓	1:40-1:80	1 Publication
Neutralization (Neu)	-		1 Publication

Product Specific Information

MA5-13232 targets Melanoma (gp100) in IHC (P) and WB applications and shows reactivity with Human samples.

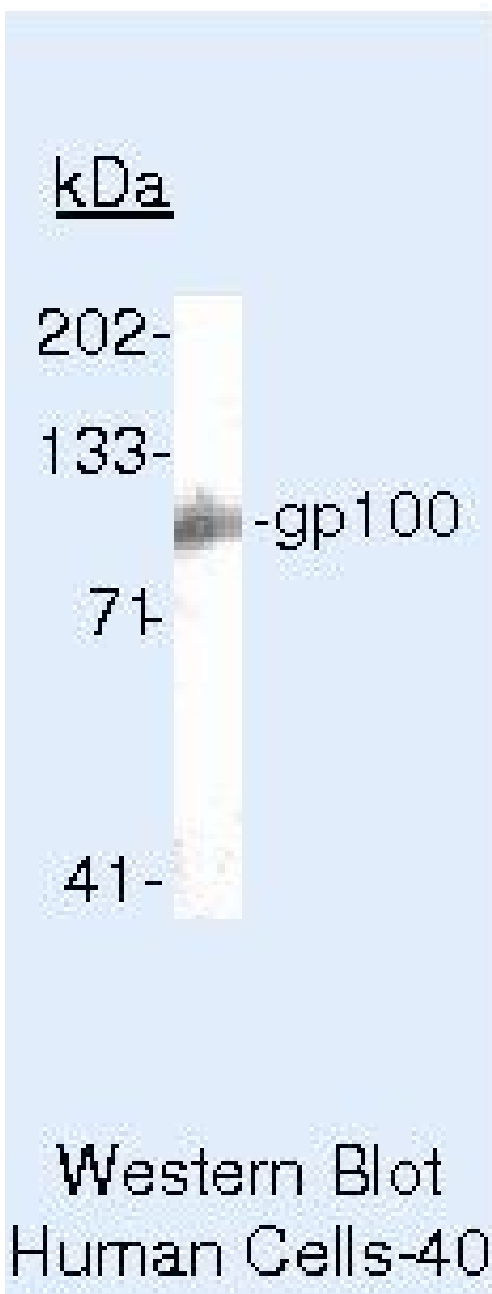
The MA5-13232 immunogen is extract of pigmented melanoma metastases from lymph nodes.

Product Images For PMEL Monoclonal Antibody (HMB45)



PMEL Antibody (MA5-13232) in IHC

Formalin-fixed, paraffin-embedded human melanoma stained with Melanoma antibody using peroxidase-conjugate and AEC chromogen. Note cytoplasmic staining of tumor cells.



PMEL Antibody (MA5-13232) in WB

Western blot of Melanoma (gp100) using Melanoma (gp100) Monoclonal Antibody (Product # MA5-13232) on 501mel Cells.

38 References

Immunocytochemistry (10)

Molecular vision

Appropriately differentiated ARPE-19 cells regain phenotype and gene expression profiles similar to those of native RPE cells.

"MA513232 was used in immunocytochemistry to identify conditions in which low-passage ARPE-19 cells express genes specific to native human RPE cells"

Authors: Samuel W, Jaworski C, Postnikova OA, Kutty RK, Duncan T, Tan LX, Poliakov E, Lakkaraju A, Redmond TM

Species
Human

Dilution
Not Cited

Year
2018

The Journal of cell biology

BLOC-1 and BLOC-3 regulate VAMP7 cycling to and from melanosomes via distinct tubular transport carriers.

"MA5-13232 was used in immunocytochemistry to propose that VAMP7 mediates fusion of BLOC-1-dependent transport carriers with melanosomes"

Authors: Dennis MK, Delevoye C, Acosta-Ruiz A, Hurbain I, Romao M, Hesketh GG, Goff PS, Sviderskaya EV, Bennett DC, Luzio JP, Galli T, Owen DJ, Raposo G, Marks MS

Species
Mouse

Dilution
Not Cited

Year
2016

[View more ICC references on thermofisher.com](#)

Immunofluorescence (1)

Molecular vision

Appropriately differentiated ARPE-19 cells regain phenotype and gene expression profiles similar to those of native RPE cells.

"MA513232 was used in immunocytochemistry to identify conditions in which low-passage ARPE-19 cells express genes specific to native human RPE cells"

Authors: Samuel W, Jaworski C, Postnikova OA, Kutty RK, Duncan T, Tan LX, Poliakov E, Lakkaraju A, Redmond TM

Species
Human

Dilution
Not Cited

Year
2018

Immunohistochemistry (Frozen) (1)

JCI insight

NK cell activating receptor ligand expression in lymphangioliomyomatosis is associated with lung function decline.

"MA513232 was used in immunohistochemistry - frozen section to investigate the role of natural killer cells to lymphangioliomyomatosis pathogenesis"

Authors: Osterburg AR, Nelson RL, Yaniv BZ, Foot R, Donica WR, Nashu MA, Liu H, Wikenheiser-Brokamp KA, Moss J, Gupta N, McCormack FX, Borchers MT

Species
Human

Dilution
1:150

Year
2016

More applications with references on thermofisher.com

MISC (1) **Flow (2)** **WB (5)** **IHC (16)** **IHC (P) (1)** **Neu (1)**

For Research Use Only. Not for use in diagnostic procedures. Not for resale without express authorization. Products are warranted to operate or perform substantially in conformance with published Product specifications in effect at the time of sale, as set forth in the Production documentation, specifications and/or accompanying package inserts ("Documentation"). No claim of suitability for use in applications regulated by FDA is made. The warranty provided herein is valid only when used by properly trained individuals. Unless otherwise stated in the Documentation, this warranty is limited to one year from date of shipment when the Product is subjected to normal, proper and intended usage. This warranty does not extend to anyone other than the Buyer. Any model or sample furnished to Buyer is merely illustrative of the general type and quality of goods and does not represent that any Product will conform to such model or sample. NO OTHER WARRANTIES, EXPRESS OR IMPLIED, ARE GRANTED INCLUDING WITHOUT LIMITATION, IMPLIED WARRANTIES OF MERCHANTABILITY, FITNESS FOR ANY PARTICULAR PURPOSE, OR NON INFRINGEMENT. BUYER'S EXCLUSIVE REMEDY FOR NON-CONFORMING PRODUCTS DURING THE WARRANTY PERIOD IS LIMITED TO REPAIR, REPLACEMENT OF OR REFUND FOR THE NON-CONFORMING PRODUCT(S) AT SELLER'S SOLE OPTION. THERE IS NO OBLIGATION TO REPAIR, REPLACE OR REFUND FOR PRODUCTS AS THE RESULT OF (I) ACCIDENT, DISASTER OR EVENT OF FORCE MAJEURE, (II) MISUSE, FAULT OR NEGLIGENCE OF OR BY BUYER, (III) USE OF THE PRODUCTS IN A MANNER FOR WHICH THEY WERE NOT DESIGNED, OR (IV) IMPROPER STORAGE AND HANDLING OF THE PRODUCTS. Unless otherwise expressly stated on the Product or in the documentation accompanying the Product, the Product is intended for research only and is not to be used for any other purpose, including without limitation, unauthorized commercial uses, in vitro diagnostic uses, ex vivo or in vivo therapeutic uses, or any type of consumption by or application to human or animals.