

EGFR Monoclonal Antibody (111.6), Biotin

Product Details	
Size	500 µL
Species	Human
Published Species	Dog, Non-human primate, Sheep, Human, Mouse
Expression System	Mouse / IgG1
Class	Monoclonal
Type	Antibody
Clone	111.6
Conjugate	Biotin
Immunogen	Extracellular domain of human recombinant EGFR protein
Form	Liquid
Concentration	0.2 mg/mL
Purification	Protein G
Storage buffer	PBS, pH 7.4, with 0.2% BSA
Contains	0.09% sodium azide
Storage Conditions	4° C
RRID	AB_10985900

Applications	Tested Dilution	Publications
Immunohistochemistry (Paraffin) (IHC (P))	2-4 µg/mL	-
Immunoprecipitation (IP)	2 µg/mL	2 Publications
Western Blot (WB)	2-4 µg/mL	2 Publications
Flow Cytometry (Flow)	-	3 Publications
Gel Shift (GS)	-	1 Publication
Immunocytochemistry (ICC)	-	7 Publications
Immunohistochemistry (IHC)	-	29 Publications
Neutralization (Neu)	-	1 Publication

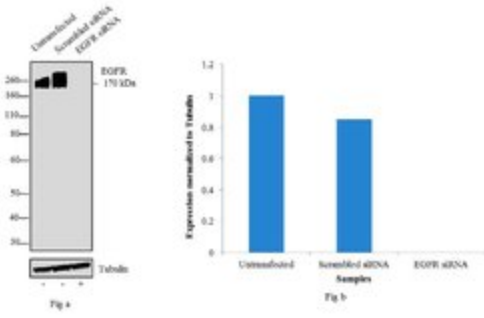
Product Specific Information

MA5-13266 targets Epidermal Growth Factor Receptor in IHC (P), IP, and WB applications and shows reactivity with Human samples.

The MA5-13266 immunogen is extracellular domain of human recombinant EGFR protein.

EGFR Antibody (MA5-13266)

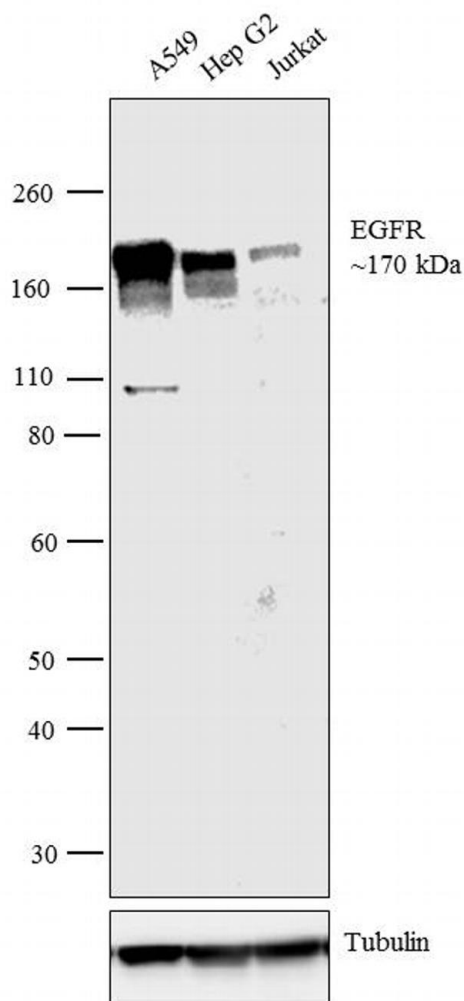
Antibody specificity was demonstrated by siRNA mediated knockdown of target protein. A431 cells were transfected with EGFR siRNA and decrease in signal intensity was observed in western blot application using Anti-EGFR Monoclonal Antibody (111.6), Biotin (Product # MA5-13266). Knockdown validation info.



Product Images For EGFR Monoclonal Antibody (111.6), Biotin

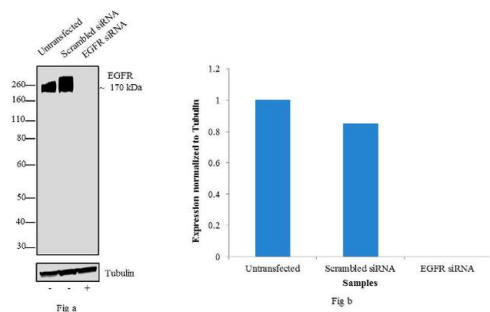
EGFR Antibody (MA5-13266) in WB

Western blot analysis was performed on membrane enriched extracts (30 µg lysate) of A549 (Lane 1), Hep G2 (Lane 2) and Jurkat (Lane 3). The blot was probed with Anti-EGFR Monoclonal Antibody, Biotin (Product # MA5-13266, 1 µg/mL) and detected by chemiluminescence using Poly-HRP Streptavidin (Product# N200, 1:10,000 dilution). A 170 kDa band corresponding to EGFR was observed across the cell lines tested. Known quantity of protein samples were electrophoresed using Novex® NuPAGE® 4-12 % Bis-Tris gel (Product # NP0321BOX), XCell SureLock™ Electrophoresis System (Product # EI0002) and Novex® Sharp Pre-Stained Protein Standard (Product # LC5800). Resolved proteins were then transferred onto a nitrocellulose membrane with overnight wet transfer system. The membrane was probed with the relevant primary following blocking with 5 % skimmed milk. Chemiluminescent detection was performed using Pierce™ ECL Western Blotting Substrate (Product # 32106).



EGFR Antibody (MA5-13266) in WB

Knockdown of EGFR was achieved by transfecting A431 cells with EGFR specific validated siRNA (Silencer® select Cat # s563, s564 and s565). Western blot analysis (Fig a) was performed using membrane enriched extracts from the EGFR knock down cells (lane 3), non-specific scrambled siRNA transfected cells (lane 2) and untransfected cells (lane 1). The blots were probed with Anti-EGFR Monoclonal Antibody (111.6), Biotin (Product# MA5-13266, 1-3 µg/mL) and Poly-HRP Streptavidin (Product# N200, 1:10,000 dilution). Densitometric analysis of this western blot is shown in histogram (Fig b). Loss of signal upon siRNA mediated knock down confirms that antibody is specific to EGFR.



View more figures on thermofisher.com

Immunohistochemistry (29)

PloS one

Multiplexed Molecular Imaging of Biomarker-Targeted SERS Nanoparticles on Fresh Tissue Specimens with Channel-Compressed Spectrometry.

"MA513266 was used in immunohistochemistry to perform Raman-encoded molecular imaging with five nanoparticle flavors"

Authors: Kang S,Wang Y,Reeder NP,Liu JT

Species
Human

Dilution
Not Cited

Year
2019

PloS one

EGFR, HER-2 and KRAS in canine gastric epithelial tumors: a potential human model?

"MA5-13266 was used in immunohistochemistry to examine canine gastric epithelial tumors for the expression of EGFR, HER-2 and KRAS in order to determine whether dog is a suitable model of the corresponding human cancer"

Authors: Terragni R,Casadei Gardini A,Sabattini S,Bettini G,Amadori D,Talamonti C,Vignoli M,Capelli L,Saunders JH, Ricci M,Ricci M,Ulivi P,Ulivi P

Species
Human

Dilution
Not Cited

Year
2014

[View more IHC references on thermofisher.com](#)

Immunocytochemistry (7)

International journal of cancer

EGFR, HER2 and HER3 dimerization patterns guide targeted inhibition in two histotypes of esophageal cancer.

"MA5-13266 was used in immunocytochemistry and immunohistochemistry to study the value of the expression and dimerization patterns of EGFR, HER2 and HER3 in esophageal cancer histotypes for guiding targeted anti-EGFR and -HER2 therapy"

Authors: Fichter CD, Timme S, Braun JA, Gudernatsch V, Schöpflin A, Bogatyreva L, Geddert H, Faller G, Klimstra D, Tang L, Hauschke D, Werner M, Lassmann S

Species
Human

Dilution
Not Cited

Year
2014

The spine journal : official journal of the North American Spine Society

Prostaglandin E1 and misoprostol increase epidermal growth factor production in 3D-cultured human annulus cells.

"MA5-13266 was used in immunocytochemistry to investigate the influence of PGE1 and misoprostol on epidermal growth factor expression in 3D-cultured human annulus cells"

Authors: Gruber HE, Hoelscher G, Loeffler B, Chow Y, Ingram JA, Halligan W, Hanley EN

Species
Human

Dilution
4 ug/ml

Year
2009

[View more ICC references on thermofisher.com](#)

More applications with references on thermofisher.com

Neu (1) Flow (3) IP (2) WB (2) GS (1)

For Research Use Only. Not for use in diagnostic procedures. Not for resale without express authorization. Products are warranted to operate or perform substantially in conformance with published Product specifications in effect at the time of sale, as set forth in the Production documentation, specifications and/or accompanying package inserts ("Documentation"). No claim of suitability for use in applications regulated by FDA is made. The warranty provided herein is valid only when used by properly trained individuals. Unless otherwise stated in the Documentation, this warranty is limited to one year from date of shipment when the Product is subjected to normal, proper and intended usage. This warranty does not extend to anyone other than the Buyer. Any model or sample furnished to Buyer is merely illustrative of the general type and quality of goods and does not represent that any Product will conform to such model or sample. NO OTHER WARRANTIES, EXPRESS OR IMPLIED, ARE GRANTED INCLUDING WITHOUT LIMITATION, IMPLIED WARRANTIES OF MERCHANTABILITY, FITNESS FOR ANY PARTICULAR PURPOSE, OR NON INFRINGEMENT. BUYER'S EXCLUSIVE REMEDY FOR NON-CONFORMING PRODUCTS DURING THE WARRANTY PERIOD IS LIMITED TO REPAIR, REPLACEMENT OF OR REFUND FOR THE NON-CONFORMING PRODUCT(S) AT SELLER'S SOLE OPTION. THERE IS NO OBLIGATION TO REPAIR, REPLACE OR REFUND FOR PRODUCTS AS THE RESULT OF (I) ACCIDENT, DISASTER OR EVENT OF FORCE MAJEURE, (II) MISUSE, FAULT OR NEGLIGENCE OF OR BY BUYER, (III) USE OF THE PRODUCTS IN A MANNER FOR WHICH THEY WERE NOT DESIGNED, OR (IV) IMPROPER STORAGE AND HANDLING OF THE PRODUCTS. Unless otherwise expressly stated on the Product or in the documentation accompanying the Product, the Product is intended for research only and is not to be used for any other purpose, including without limitation, unauthorized commercial uses, in vitro diagnostic uses, ex vivo or in vivo therapeutic uses, or any type of consumption by or application to human or animals.