

CD26 Monoclonal Antibody (202-36)

Product Details	
Size	500 µL
Species Reactivity	Human, Rat
Published Species	Human
Host/Isotype	Mouse / IgG2b, kappa
Class	Monoclonal
Type	Antibody
Clone	202-36
Conjugate	Unconjugated
Immunogen	Human T cell clone
Form	Liquid
Concentration	0.2 mg/mL
Purification	Protein A
Storage buffer	PBS, pH 7.4, with 0.2% BSA
Contains	0.09% sodium azide
Storage conditions	4° C
RRID	AB_10985495

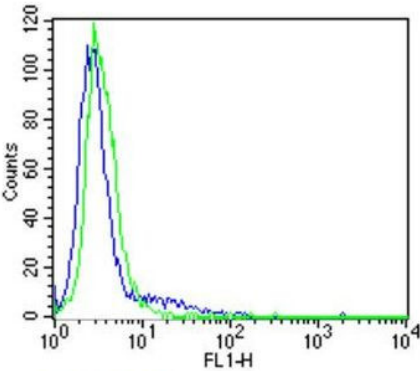
Applications	Tested Dilution	Publications
Western Blot (WB)	-	1 Publication
Immunohistochemistry (IHC)	-	1 Publication
Immunocytochemistry (ICC/IF)	Assay-dependent	-
Flow Cytometry (Flow)	Assay-dependent	-

Product Specific Information

MA5-13562 targets CD26 in FACS and IF applications and shows reactivity with Human and Rat samples. This antibody is not suitable for rat PC12 cells in FACS analysis.

The MA5-13562 immunogen is human T cell clone.

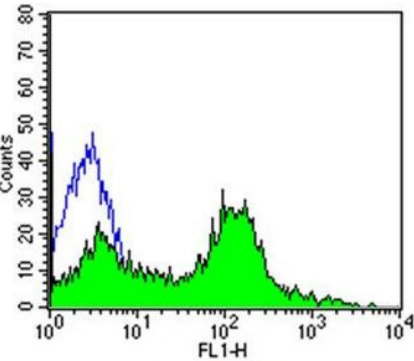
Product Images For CD26 Monoclonal Antibody (202-36)



Cell: PC12
Concentration: 0.25µg/test (100ul)
Theory location: Membrane

CD26 Antibody (MA5-13562) in Flow

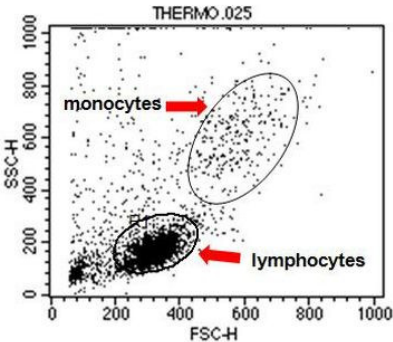
Flow cytometry analysis of CD26 in PC12 cells compared to an isotype control (blue). Cells were harvested, adjusted to a concentration of $1-5 \times 10^6$ cells/mL, fixed with 2% paraformaldehyde, washed with PBS, and incubated with CD26 monoclonal antibody (Product # MA5-13562) at a dilution of 0.25 µg/test for 60 min at room temperature. Cells were then blocked in a solution of 2% BSA-PBS for 30 min at room temperature, incubated for 40 min at room temperature in the dark using a DyLight 488-conjugated goat anti-mouse IgG (H+L) secondary antibody, and re-suspended in PBS for FACS analysis.



Cell: peripheral blood lymphocytes
Concentration: 0.25µg/test (100ul)
Theory location: Membrane

CD26 Antibody (MA5-13562) in Flow

Flow cytometry analysis of CD26 in PBMC cells compared to an isotype control (blue). Human blood was collected, combined with a hydrophilic polysaccharide, centrifuged, transferred to a conical tube and washed with PBS. 50 µL of cell solution was added to each tube at a dilution of 2×10^7 cells/mL, followed by the addition of 50 µL of isotype control and primary antibody (Product # MA5-13562) at a dilution of 0.25 µg/test. Cells were incubated for 30 min at 4°C and washed with a cell buffer, followed by incubation with a DyLight 488-conjugated goat anti-mouse IgG (H+L) secondary for 30 min at 4°C in the dark. FACS analysis was performed using 400 µL of cell buffer.



Cell: peripheral blood lymphocytes
Concentration: 0.25µg/test (100ul)
Theory location: Membrane

CD26 Antibody (MA5-13562) in Flow

Flow cytometry analysis of CD26 in PBMC cells compared to an isotype control (blue). Human blood was collected, combined with a hydrophilic polysaccharide, centrifuged, transferred to a conical tube and washed with PBS. 50 µL of cell solution was added to each tube at a dilution of 2×10^7 cells/mL, followed by the addition of 50 µL of isotype control and primary antibody (Product # MA5-13562) at a dilution of 0.25 µg/test. Cells were incubated for 30 min at 4°C and washed with a cell buffer, followed by incubation with a DyLight 488-conjugated goat anti-mouse IgG (H+L) secondary for 30 min at 4°C in the dark. FACS analysis was performed using 400 µL of cell buffer.

Western Blot (1)

<p>The Prostate</p> <p>Co-purification of Mac-2 binding protein with galectin-3 and association with prostasomes in human semen.</p> <p>"MA5-13562 was used in western blot to identify the candidate binding ligands of galectin-3 in human semen"</p> <p>Authors: Block AS,Saraswati S,Lichti CF,Mahadevan M,Diekman AB</p>	<p>Year 2011</p> <p>Species Human</p> <p>Dilution 1:1000</p>
--	---

Immunohistochemistry (1)

<p>The Journal of biological chemistry</p> <p>Heparan sulfate plays a central role in a dynamic in vitro model of protein-losing enteropathy.</p> <p>"MA5-13562 was used in immunohistochemistry To study the the role of heparan sulfate in a dynamic in vitro model of protein-losing enteropathy"</p> <p>Authors: Bode L,Murch S,Freeze HH</p>	<p>Year 2006</p> <p>Species Human</p>
--	---

For Research Use Only. Not for use in diagnostic procedures. Not for resale without express authorization. Products are warranted to operate or perform substantially in conformance with published Product specifications in effect at the time of sale, as set forth in the Production documentation, specifications and/or accompanying package inserts ("Documentation"). No claim of suitability for use in applications regulated by FDA is made. The warranty provided herein is valid only when used by properly trained individuals. Unless otherwise stated in the Documentation, this warranty is limited to one year from date of shipment when the Product is subjected to normal, proper and intended usage. This warranty does not extend to anyone other than the Buyer. Any model or sample furnished to Buyer is merely illustrative of the general type and quality of goods and does not represent that any Product will conform to such model or sample. NO OTHER WARRANTIES, EXPRESS OR IMPLIED, ARE GRANTED INCLUDING WITHOUT LIMITATION, IMPLIED WARRANTIES OF MERCHANTABILITY, FITNESS FOR ANY PARTICULAR PURPOSE, OR NON INFRINGEMENT. BUYER'S EXCLUSIVE REMEDY FOR NON-CONFORMING PRODUCTS DURING THE WARRANTY PERIOD IS LIMITED TO REPAIR, REPLACEMENT OF OR REFUND FOR THE NON-CONFORMING PRODUCT(S) AT SELLER'S SOLE OPTION. THERE IS NO OBLIGATION TO REPAIR, REPLACE OR REFUND FOR PRODUCTS AS THE RESULT OF (I) ACCIDENT, DISASTER OR EVENT OF FORCE MAJEURE, (II) MISUSE, FAULT OR NEGLIGENCE OF OR BY BUYER, (III) USE OF THE PRODUCTS IN A MANNER FOR WHICH THEY WERE NOT DESIGNED, OR (IV) IMPROPER STORAGE AND HANDLING OF THE PRODUCTS. Unless otherwise expressly stated on the Product or in the documentation accompanying the Product, the Product is intended for research only and is not to be used for any other purpose, including without limitation, unauthorized commercial uses, in vitro diagnostic uses, ex vivo or in vivo therapeutic uses, or any type of consumption by or application to human or animals.