

CBP Monoclonal Antibody (NM11), Biotin

Product Details	
Size	500 µL
Species Reactivity	Human, Mink, Mouse, Non-human primate, Rat
Published Species	Human
Host/Isotype	Mouse / IgG2b, kappa
Class	Monoclonal
Type	Antibody
Clone	NM11
Conjugate	Biotin
Immunogen	E1A affinity purified p300 protein
Form	Liquid
Concentration	0.2 mg/mL
Purification	Protein A
Storage buffer	PBS, pH 7.4, with 0.2% BSA
Contains	0.09% sodium azide
Storage conditions	4° C
RRID	AB_10979633

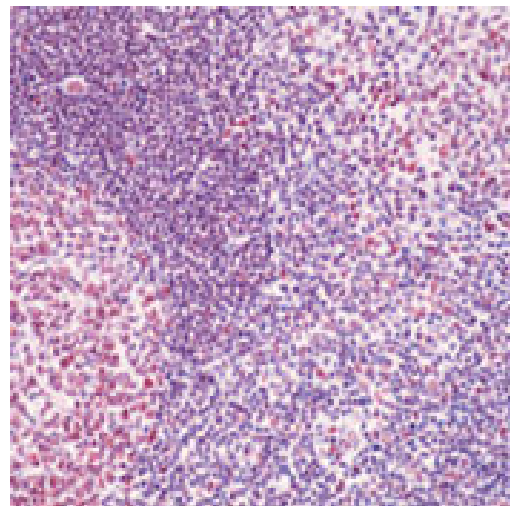
Applications	Tested Dilution	Publications
Western Blot (WB)	-	1 Publication
Immunohistochemistry (IHC)	-	1 Publication
Immunohistochemistry (Paraffin) (IHC (P))	1:50-1:100	-
Immunocytochemistry (ICC/IF)	-	1 Publication

Product Specific Information

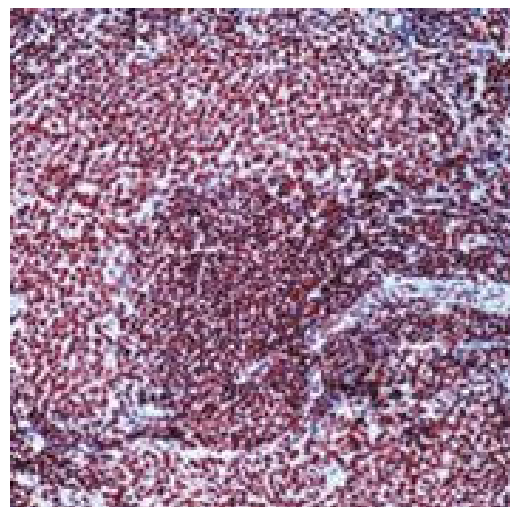
MA5-13631 targets p300/CBP (CREB-Binding Protein) in IF and IHC (P) applications and shows reactivity with Human, Mink, mouse, Non-human primate, and Rat samples.

The MA5-13631 immunogen is e1A affinity purified p300 protein.

Product Images For CBP Monoclonal Antibody (NM11), Biotin



CBP Antibody (MA5-13631) in IHC (P)
Formalin-fixed, paraffin-embedded human tonsil stained with p300 antibody using peroxidase-conjugate and AEC chromogen. Note nuclear staining of proliferating cells.



CBP Antibody (MA5-13631) in IHC (P)
Formalin-fixed, paraffin-embedded rat spleen stained with p300 antibody using peroxidase-conjugate and AEC chromogen. Note nuclear staining of proliferating cells.

Western Blot (1)

<p>The Journal of experimental medicine</p> <p>KLF2 Is a novel transcriptional regulator of endothelial proinflammatory activation.</p> <p>"MA5-13631 was used in western blot to investigate the influence of KLF2 on endothelial inflammation"</p> <p>Authors: SenBanerjee S,Lin Z,Atkins GB,Greif DM,Rao RM,Kumar A,Feinberg MW,Chen Z,Simon DI,Luscinskas FW, Michel TM,Gimbrone MA,García-Cardena G,Jain MK</p>	<p>Year 2004</p> <p>Species Human</p>
-----------------------------------------------------------------------------------------------------------------------------------------------------------------------------------------------------------------------------------------------------------------------------------------------------------------------------------------------------------------------------------------------------------------------------	-----------------------------------------------

Immunohistochemistry (1)

<p>Breast cancer research and treatment</p> <p>Expression of sex steroid receptors and their co-factors in normal and malignant breast tissue: AIB1 is a carcinoma-specific co-activator.</p> <p>"MA5-13631 was used in immunohistochemistry to study the expression of estrogen receptors and their transcriptional co-factors in normal and malignant breast tissue"</p> <p>Authors: Hudelist G,Czerwenka K,Kubista E,Marton E,Pischinger K,Singer CF</p>	<p>Year 2003</p> <p>Species Human</p> <p>Dilution 1:50</p>
--------------------------------------------------------------------------------------------------------------------------------------------------------------------------------------------------------------------------------------------------------------------------------------------------------------------------------------------------------------------------------------------------------------------------------------------------------------------	------------------------------------------------------------------------

Immunocytochemistry (1)

<p>Molecular & cellular proteomics : MCP</p> <p>Virus-derived platforms for visualizing protein associations inside cells.</p> <p>"MA5-13631 was used in immunocytochemistry to evaluate a virus-derived method for the study of protein associations inside cells"</p> <p>Authors: Miller CL,Arnold MM,Broering TJ,Eichwald C,Kim J,Dinoso JB,Nibert ML</p>	<p>Year 2007</p> <p>Species Human</p>
-------------------------------------------------------------------------------------------------------------------------------------------------------------------------------------------------------------------------------------------------------------------------------------------------------------------------------------------------------------------------	-----------------------------------------------

For Research Use Only. Not for use in diagnostic procedures. Not for resale without express authorization. Products are warranted to operate or perform substantially in conformance with published Product specifications in effect at the time of sale, as set forth in the Production documentation, specifications and/or accompanying package inserts ("Documentation"). No claim of suitability for use in applications regulated by FDA is made. The warranty provided herein is valid only when used by properly trained individuals. Unless otherwise stated in the Documentation, this warranty is limited to one year from date of shipment when the Product is subjected to normal, proper and intended usage. This warranty does not extend to anyone other than the Buyer. Any model or sample furnished to Buyer is merely illustrative of the general type and quality of goods and does not represent that any Product will conform to such model or sample. NO OTHER WARRANTIES, EXPRESS OR IMPLIED, ARE GRANTED INCLUDING WITHOUT LIMITATION, IMPLIED WARRANTIES OF MERCHANTABILITY, FITNESS FOR ANY PARTICULAR PURPOSE, OR NON INFRINGEMENT. BUYER'S EXCLUSIVE REMEDY FOR NON-CONFORMING PRODUCTS DURING THE WARRANTY PERIOD IS LIMITED TO REPAIR, REPLACEMENT OF OR REFUND FOR THE NON-CONFORMING PRODUCT(S) AT SELLER'S SOLE OPTION. THERE IS NO OBLIGATION TO REPAIR, REPLACE OR REFUND FOR PRODUCTS AS THE RESULT OF (I) ACCIDENT, DISASTER OR EVENT OF FORCE MAJEURE, (II) MISUSE, FAULT OR NEGLIGENCE OF OR BY BUYER, (III) USE OF THE PRODUCTS IN A MANNER FOR WHICH THEY WERE NOT DESIGNED, OR (IV) IMPROPER STORAGE AND HANDLING OF THE PRODUCTS. Unless otherwise expressly stated on the Product or in the documentation accompanying the Product, the Product is intended for research only and is not to be used for any other purpose, including without limitation, unauthorized commercial uses, in vitro diagnostic uses, ex vivo or in vivo therapeutic uses, or any type of consumption by or application to human or animals.