

# ErbB2 (HER-2) Monoclonal Antibody (3B5), Biotin

## Product Details

Size	500 µL
Species	Human, Mouse, Non-human primate, Rat
Published Species	Avian, Rat, Hamster, Cat, Human, Mouse
Expression System	Mouse / IgG1
Class	Monoclonal
Type	Antibody
Clone	3B5
Conjugate	Biotin
Immunogen	A synthetic peptide from the C-terminus of human c-erbB-2 protein. This Sequence Is Identical In Rat Neu Protein.
Form	Liquid
Concentration	0.2 mg/mL
Purification	Protein G
Storage buffer	PBS, pH 7.4, with 0.2% BSA
Contains	0.09% sodium azide
Storage Conditions	4° C
RRID	AB_10982527

Applications	Tested Dilution	Publications
Immunohistochemistry (IHC)	1:1000-1:1500	26 Publications
Immunoprecipitation (IP)	2 µg/mL	2 Publications
Western Blot (WB)	1 µg/mL	15 Publications
ELISA (ELISA)	-	3 Publications
Immunocytochemistry (ICC)	-	6 Publications

## Product Specific Information

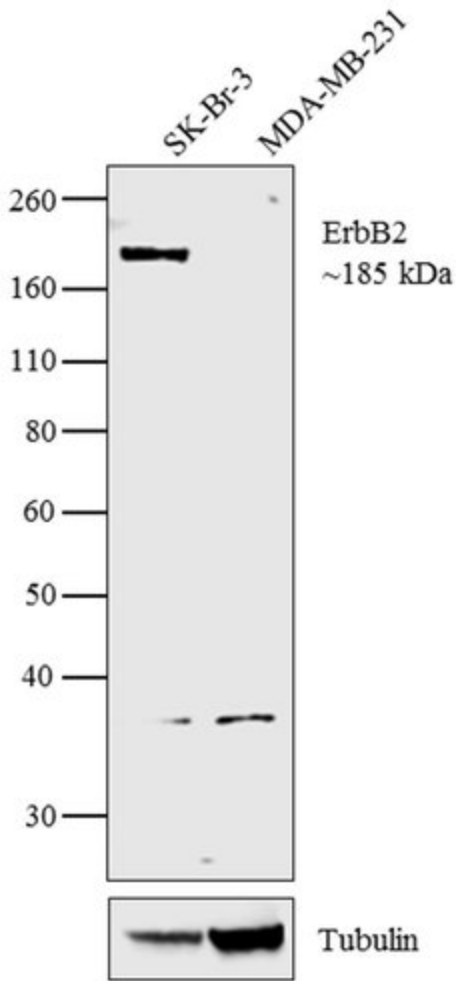
MA5-13672 targets HER-2 in IHC, IP, and WB applications and shows reactivity with Human, mouse, Non-human primate, and Rat samples.

The MA5-13672 immunogen is a synthetic peptide from the C-terminus of human c-erbB-2 protein. This Sequence Is Identical In Rat Neu Protein.

## Advanced Verification Data

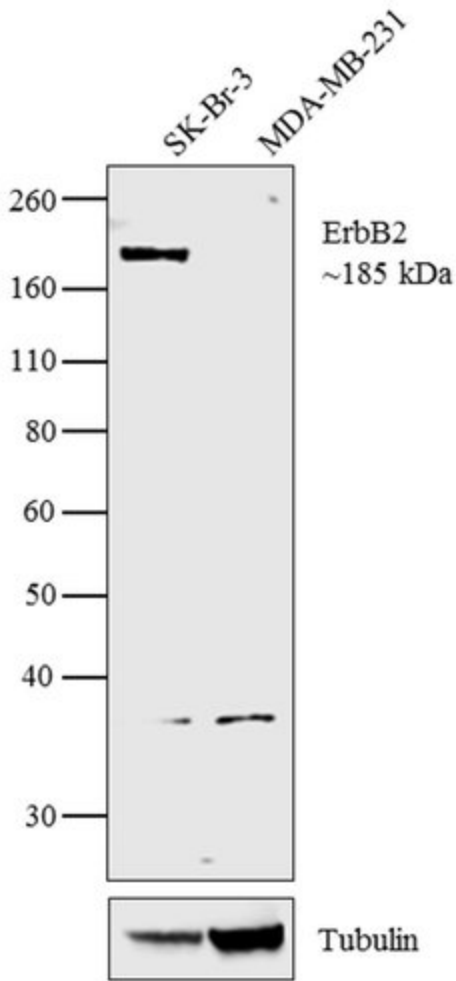
### ErbB2 (HER-2) Antibody (MA5-13672)

Antibody specificity was demonstrated by detection of differential basal expression of the target across cell models owing to their inherent genetic constitution. Relative expression of ErbB2 was observed in SK-BR-3 and MDA-MB-231 in Western Blot using ErbB2 Monoclonal Antibody (Product # MA5-13672). SK-BR-3 has been reported to over-express ErbB2, whereas MDA-MB-231 has been shown to be negative for ErbB2 expression (PMCID: PMC2914277). Relative expression validation info.



### ErbB2 (HER-2) Antibody (MA5-13672)

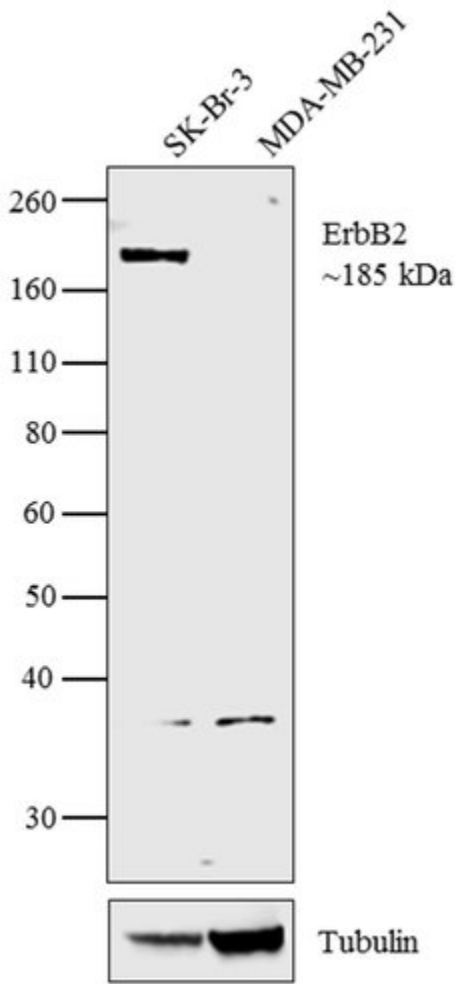
Antibody specificity was demonstrated by detection of differential basal expression of the target across cell models owing to their inherent genetic constitution. Relative expression of ErbB2 was observed in SK-BR-3 and MDA-MB-231 in Western Blot using ErbB2 Monoclonal Antibody (Product # MA5-13672). SK-BR-3 has been reported to over-express ErbB2, whereas MDA-MB-231 has been shown to be negative for ErbB2 expression (PMCID: PMC2914277). Relative expression validation info.



## Product Images For ErbB2 (HER-2) Monoclonal Antibody (3B5), Biotin

### ErbB2 (HER-2) Antibody (MA5-13672) in WB

Western blot analysis was performed on membrane enriched extracts (30 µg lysate) of SK-BR-3 (1) and MDA-MB-231 (2). The blots were probed with Anti-ErbB2 Mouse Monoclonal Antibody (Product # MA5-13672, 1 µg/mL dilution) and detected by chemiluminescence using Streptavidin-HRP (Product # N200, 1:10,000 dilution). A 185 kDa band corresponding to ErbB2 was observed in SK-BR-3 but not in MDA-MB-231, which is a negative control for ErbB2. Known quantity of protein samples were electrophoresed using Novex® NuPAGE® 4-12 % Bis-Tris gel (Product # NP0321BOX), XCell SureLock™ Electrophoresis System (Product # EI0002) and Novex® Sharp Pre-Stained Protein Standard (Product # LC5800). Resolved proteins were then transferred onto a nitrocellulose membrane using the wet transfer system. The membrane was probed with the relevant primary antibody following blocking with 5 % skimmed milk. Chemiluminescent detection was performed using Pierce™ ECL Western Blotting Substrate (Product # 32106).



[View more figures on thermofisher.com](https://www.thermofisher.com)

## ELISA (3)

### Physiological measurement

#### Impedance spectroscopy assisted by magnetic nanoparticles as a potential biosensor principle for breast cancer cells in suspension.

"MA5-13672 was used in ELISA to study the use of impedance spectroscopy combined with magnetic nanoparticles for the measurement of breast cancer cells in suspension"

Authors: Silva JG,Cárdenas RA,Quiróz AR,Sánchez V,Lozano LM,Pérez NM,López J,Villanueva C,González CA

**Species**  
Human

**Dilution**  
Not Cited

**Year**  
2014

### American journal of clinical pathology

#### Comparison of central HER2 testing with quantitative total HER2 expression and HER2 homodimer measurements using a novel proximity-based assay.

"MA5-13672 was used in ELISA to develop and evaluate a novel proximity-based assay for quantitating total HER2 expression and HER2 homodimer"

Authors: Huang W,Reinholz M,Weidler J,Yolanda L,Paquet A,Whitcomb J,Lingle W,Jenkins RB,Chen B,Larson JS,Tan Y,Sherwood T,Bates M,Perez EA

**Species**  
Not Applicable

**Dilution**  
Not Cited

**Year**  
2010

[View more ELISA references on thermofisher.com](#)

## Western Blot (15)

### Scientific reports

#### A cell-based screening system for influenza A viral RNA transcription /replication inhibitors.

"MA5-13672 was used in western blot to develop a cell-based screening system to identify compounds that inhibit influenza A viral RNA transcription/replication"

Authors: Ozawa M,Shimajima M,Goto H,Watanabe S,Hatta Y,Kiso M,Furuta Y,Horimoto T,Peters NR,Hoffmann FM,Kawaoka Y

**Species**  
Human

**Dilution**  
Not Cited

**Year**  
2013

### Journal of nuclear medicine : official publication, Society of Nuclear Medicine

#### Monitoring afatinib treatment in HER2-positive gastric cancer with 18F-FDG and 89Zr-trastuzumab PET.

"MA5-13672 was used in western blot to study the pharmacodynamics of afatinib in HER2-positive gastric cancer using PET"

Authors: Janjigian YY,Viola-Villegas N,Holland JP,Divilov V,Carlin SD,Gomes-DaGama EM,Chiosis G,Carbonetti G,de Stanchina E,Lewis JS

**Species**  
Human

**Dilution**  
1:500

**Year**  
2013

[View more WB references on thermofisher.com](#)

## More applications with references on thermofisher.com

**IHC (26)**   **ICC (6)**   **IP (2)**

For Research Use Only. Not for use in diagnostic procedures. Not for resale without express authorization. Products are warranted to operate or perform substantially in conformance with published Product specifications in effect at the time of sale, as set forth in the Production documentation, specifications and/or accompanying package inserts ("Documentation"). No claim of suitability for use in applications regulated by FDA is made. The warranty provided herein is valid only when used by properly trained individuals. Unless otherwise stated in the Documentation, this warranty is limited to one year from date of shipment when the Product is subjected to normal, proper and intended usage. This warranty does not extend to anyone other than the Buyer. Any model or sample furnished to Buyer is merely illustrative of the general type and quality of goods and does not represent that any Product will conform to such model or sample. NO OTHER WARRANTIES, EXPRESS OR IMPLIED, ARE GRANTED INCLUDING WITHOUT LIMITATION, IMPLIED WARRANTIES OF MERCHANTABILITY, FITNESS FOR ANY PARTICULAR PURPOSE, OR NON INFRINGEMENT. BUYER'S EXCLUSIVE REMEDY FOR NON-CONFORMING PRODUCTS DURING THE WARRANTY PERIOD IS LIMITED TO REPAIR, REPLACEMENT OF OR REFUND FOR THE NON-CONFORMING PRODUCT(S) AT SELLER'S SOLE OPTION. THERE IS NO OBLIGATION TO REPAIR, REPLACE OR REFUND FOR PRODUCTS AS THE RESULT OF (I) ACCIDENT, DISASTER OR EVENT OF FORCE MAJEURE, (II) MISUSE, FAULT OR NEGLIGENCE OF OR BY BUYER, (III) USE OF THE PRODUCTS IN A MANNER FOR WHICH THEY WERE NOT DESIGNED, OR (IV) IMPROPER STORAGE AND HANDLING OF THE PRODUCTS. Unless otherwise expressly stated on the Product or in the documentation accompanying the Product, the Product is intended for research only and is not to be used for any other purpose, including without limitation, unauthorized commercial uses, in vitro diagnostic uses, ex vivo or in vivo therapeutic uses, or any type of consumption by or application to human or animals.