

ErbB2 (HER-2) Monoclonal Antibody (3B5)

Product Details

| | |
|--------------------|---|
| Size | 500 µL |
| Species Reactivity | Human, Mouse |
| Published Species | Avian, Rat, Hamster, Cat, Mouse, Human |
| Host/Isotype | Mouse / IgG1 |
| Class | Monoclonal |
| Type | Antibody |
| Clone | 3B5 |
| Conjugate | Unconjugated |
| Immunogen | A synthetic peptide from the C-terminus of human c-erbB-2 protein. This Sequence Is Identical In Rat Neu Protein. |
| Form | Liquid |
| Concentration | 0.1 mg/mL |
| Purification | Protein G |
| Storage buffer | PBS, pH 7.4, with 0.2% BSA |
| Contains | 0.09% sodium azide |
| Storage conditions | 4° C |
| RRID | AB_10985617 |

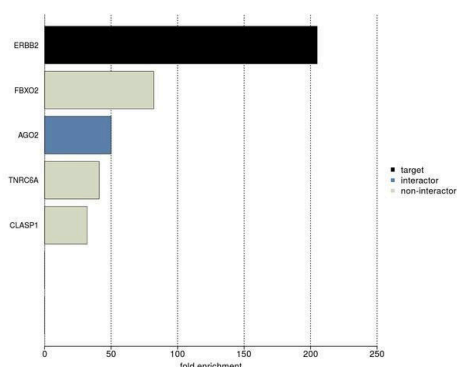
| Applications | Tested Dilution | Publications |
|---|-----------------|-----------------|
| Western Blot (WB) | - | 19 Publications |
| Immunohistochemistry (IHC) | 1:1,000-1:2,000 | 30 Publications |
| Immunohistochemistry (Paraffin) (IHC (P)) | - | 1 Publication |
| Immunocytochemistry (ICC/IF) | 1:50-1:500 | 4 Publications |
| Flow Cytometry (Flow) | 1:10-1:100 | - |
| ELISA (ELISA) | - | 4 Publications |
| Immunoprecipitation (IP) | 1:25 | 3 Publications |

Product Specific Information

MA5-13675 targets HER-2 in IHC, IP, ICC, IF, FACS and WB applications and shows reactivity with Human, mouse, Non-human primate, and Rat samples.

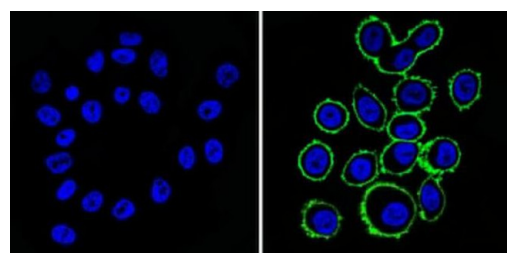
The MA5-13675 immunogen is a synthetic peptide from the C-terminus of human c-erbB-2 protein. This Sequence Is Identical In Rat Neu Protein.

Product Images For ErbB2 (HER-2) Monoclonal Antibody (3B5)



ErbB2 (HER-2) Antibody (MA5-13675)

IP-MS enrichment of ERBB2 (LFQ intensity): ERBB2 was enriched 205-fold from HCT116 lysate compared to background proteins, using the optimized IP-MS workflow with Pierce MS-Compatible Magnetic IP Kit protein A/G (Product # 90409) and ERBB2 antibody (Product # MA5-13675). The STRING database (www.string-db.org) was used to identify the protein interactor list. See more information on IP-MS verification of antibody selectivity. {IP-MS}

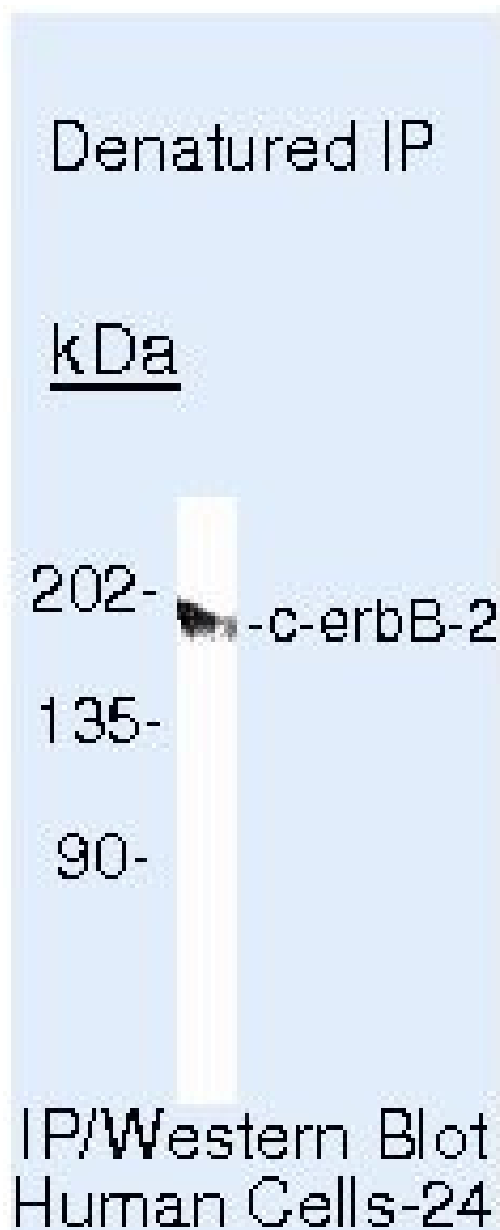


ErbB2 (HER-2) Antibody (MA5-13675) in ICC/IF

Immunofluorescent analysis of HER-2/ErbB2 (green) showing membrane staining in SK-BR-3 cells (right) compared to a negative control without primary antibody (left). Cells were permeabilized with 0.1% Triton X-100 in TBS for 5-10 minutes and blocked with 3% BSA-PBS for 30 minutes at room temperature. Cells were probed with a HER-2/ErbB2 monoclonal antibody (Product # MA5-13675) in 3% BSA-PBS at a dilution of 1:100 and incubated overnight at 4°C in a humidified chamber. Cells were washed with PBST and incubated with a DyLight-488 conjugated secondary antibody in PBS at room temperature in the dark. Nuclei were stained with DAPI (blue) and images were taken at a magnification of 60x.

ErbB2 (HER-2) Antibody (MA5-13675) in IP

Immunoprecipitation of HER-2 using HER-2 Monoclonal Antibody (Product # MA5-13675) on denatured Human SKBR3 Cells.



View more figures on thermofisher.com

📖 61 References

Western Blot (19)

Molecular and cellular biology

Aberrant Neuregulin 1/ErbB Signaling in Charcot-Marie-Tooth Type 4D Disease.

"MA5-13675 was used in Western Blotting to suggest that the demyelinating phenotype of Charcot-Marie-Tooth type 4D (CMT4D) disease is at least in part a consequence of molecular defects in neuregulin 1/ErbB signaling."

Authors: Jiang LT,Chen YH,Huang JH,Tong WF,Jin LJ,Li LX

Year
2022

Species
Mouse

Frontiers in cell and developmental biology

Excessive *All-Trans* Retinoic Acid Inhibits Cell Proliferation Through Upregulated MicroRNA-4680-3p in Cultured Human Palate Cells.

"Published figure using ErbB2 (HER-2) monoclonal antibody (Product # MA5-13675) in Western Blot"

Authors: Yoshioka H,Ramakrishnan SS,Shim J,Suzuki A,Iwata J

Year
2021

View more WB references on thermofisher.com

Immunohistochemistry (30)

Disease markers

Expression and Clinical Significance of HER2 Gene and DNMT1 in Non-Small-Cell Lung Cancer.

"Published figure using ErbB2 (HER-2) monoclonal antibody (Product # MA5-13675) in Immunohistochemistry"

Authors: Diao W,Ding C,Yuan B,Li Z,Sun N,Huang J

Year
2022

Breast cancer research : BCR

Quantitative measurement of HER2 expression in breast cancers: comparison with 'real-world' routine HER2 testing in a multicenter Collaborative Biomarker Study and correlation with overall survival.

"MA5-13675 was used in immunohistochemistry to determine the best method to assess HER2 status in breast cancer samples"

Authors: Yardley DA,Kaufman PA,Huang W,Krekow L,Savin M,Lawler WE,Zrada S,Starr A,Einhorn H,Schwartzberg LS, Adams JW,Lie Y,Paquet AC,Sperinde J,Haddad M,Anderson S,Brigino M,Pesano R,Bates MP,Weidler J,Bosserman L

Year
2015

Species
Human

View more IHC references on thermofisher.com

More applications with references on thermofisher.com

- IHC (P) (1)
- ICC/IF (4)
- ELISA (4)
- IP (3)

For Research Use Only. Not for use in diagnostic procedures. Not for resale without express authorization. Products are warranted to operate or perform substantially in conformance with published Product specifications in effect at the time of sale, as set forth in the Production documentation, specifications and/or accompanying package inserts ("Documentation"). No claim of suitability for use in applications regulated by FDA is made. The warranty provided herein is valid only when used by properly trained individuals. Unless otherwise stated in the Documentation, this warranty is limited to one year from date of shipment when the Product is subjected to normal, proper and intended usage. This warranty does not extend to anyone other than the Buyer. Any model or sample furnished to Buyer is merely illustrative of the general type and quality of goods and does not represent that any Product will conform to such model or sample. NO OTHER WARRANTIES, EXPRESS OR IMPLIED, ARE GRANTED INCLUDING WITHOUT LIMITATION, IMPLIED WARRANTIES OF MERCHANTABILITY, FITNESS FOR ANY PARTICULAR PURPOSE, OR NON INFRINGEMENT. BUYER'S EXCLUSIVE REMEDY FOR NON-CONFORMING PRODUCTS DURING THE WARRANTY PERIOD IS LIMITED TO REPAIR, REPLACEMENT OF OR REFUND FOR THE NON-CONFORMING PRODUCT(S) AT SELLER'S SOLE OPTION. THERE IS NO OBLIGATION TO REPAIR, REPLACE OR REFUND FOR PRODUCTS AS THE RESULT OF (I) ACCIDENT, DISASTER OR EVENT OF FORCE MAJEURE, (II) MISUSE, FAULT OR NEGLIGENCE OF OR BY BUYER, (III) USE OF THE PRODUCTS IN A MANNER FOR WHICH THEY WERE NOT DESIGNED, OR (IV) IMPROPER STORAGE AND HANDLING OF THE PRODUCTS. Unless otherwise expressly stated on the Product or in the documentation accompanying the Product, the Product is intended for research only and is not to be used for any other purpose, including without limitation, unauthorized commercial uses, in vitro diagnostic uses, ex vivo or in vivo therapeutic uses, or any type of consumption by or application to human or animals.