

# TIMP1 Monoclonal Antibody (102D1), Biotin

Product Details	
Size	500 µL
Species Reactivity	Human
Published Species	Rat, Human, Mouse
Host/Isotype	Mouse / IgG1
Class	Monoclonal
Type	Antibody
Clone	102D1
Conjugate	Biotin
Immunogen	Recombinant human TIMP-1
Form	Liquid
Concentration	0.2 mg/mL
Purification	Protein G
Storage buffer	PBS, pH 7.4, with 0.2% BSA
Contains	0.09% sodium azide
Storage conditions	4° C
RRID	AB_11004450

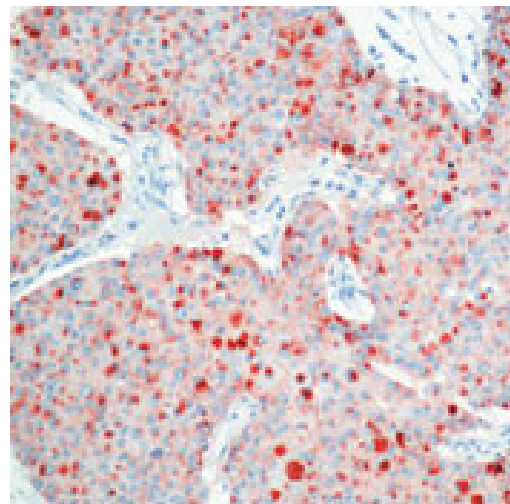
Applications	Tested Dilution	Publications
Western Blot (WB)	1:50	6 Publications
Immunohistochemistry (IHC)	-	24 Publications
Immunohistochemistry (Paraffin) (IHC (P))	1-2 µg/mL	-
ELISA (ELISA)	-	1 Publication
Neutralization (Neu)	-	1 Publication

## Product Specific Information

MA5-13685 targets TIMP-1 in IHC (P) and WB applications and shows reactivity with Human samples.

The MA5-13685 immunogen is recombinant human TIMP-1.

Product Images For TIMP1 Monoclonal Antibody (102D1), Biotin



**TIMP1 Antibody (MA5-13685) in IHC (P)**  
Formalin-fixed, paraffin-embedded human breast carcinoma stained with TIMP-1 antibody using peroxidase-conjugate and AEC chromogen. Note cytoplasmic staining of tumor cells.

[View more figures on thermofisher.com](https://thermofisher.com)

## Western Blot (6)

<p><b>Genes, chromosomes &amp; cancer</b></p> <p><b>Molecular events underlying interleukin-6 independence in a subclone of the CMA-03 multiple myeloma cell line.</b></p> <p>"MA5-13685 was used in western blot to study the molecular basis for the IL-6-independent growth of a variant of the CMA-03 multiple myeloma cell line"</p> <p>Authors: Verdelli D,Nobili L,Todoerti K,Mosca L,Fabris S,D'Anca M,Pellegrino E,Piva R,Inghirami G,Capelli C,Introna M,Baldini L,Chiaramonte R,Lombardi L,Neri A</p>	<p><b>Year</b> 2014</p> <p><b>Species</b> Human</p>
<p><b>Cancer science</b></p> <p><b>Hypoxia promotes metastasis in human gastric cancer by up-regulating the 67-kDa laminin receptor.</b></p> <p>"MA5-13685 was used in western blot to study the role of the 67 kDa laminin receptor in the mechanism by which hypoxia promotes human gastric cancer metastasis"</p> <p>Authors: Liu L,Sun L,Zhao P,Yao L,Jin H,Liang S,Wang Y,Zhang D,Pang Y,Shi Y,Chai N,Zhang H,Zhang H</p>	<p><b>Year</b> 2010</p> <p><b>Species</b> Human</p> <p><b>Dilution</b> 1:200</p>

[View more WB references on thermofisher.com](#)

## Immunohistochemistry (24)

<p><b>Australian dental journal</b></p> <p><b>Immunoexpression of matrix metalloproteinases and their inhibitors in different areas of oral squamous cell carcinoma.</b></p> <p>"MA5-13685 was used in immunohistochemistry to study the expression of MMPs and TIMPs in different histopathological regions of oral squamous cell carcinomas"</p> <p>Authors: Suarez-Roa ML,Asbun-Bojalil J,Ruiz-Godoy LM,Meneses-García AA</p>	<p><b>Year</b> 2012</p> <p><b>Species</b> Human</p> <p><b>Dilution</b> 1:50</p>
<p><b>Journal of cancer research and clinical oncology</b></p> <p><b>Expression of metalloproteases and their inhibitors by tumor and stromal cells in ductal carcinoma in situ of the breast and their relationship with microinvasive events.</b></p> <p>"MA5-13685 was used in immunohistochemistry to study the immunohistochemical expression of MMPs and TIMPs in ductal carcinoma in situ of the breast"</p> <p>Authors: González LO,González-Reyes S,Junquera S,Marín L,González L,Del Casar JM,González JM,Vizoso F</p>	<p><b>Year</b> 2010</p> <p><b>Species</b> Human</p> <p><b>Dilution</b> 1:100</p>

[View more IHC references on thermofisher.com](#)

## More applications with references on thermofisher.com

ELISA (1) Neu (1)

For Research Use Only. Not for use in diagnostic procedures. Not for resale without express authorization. Products are warranted to operate or perform substantially in conformance with published Product specifications in effect at the time of sale, as set forth in the Production documentation, specifications and/or accompanying package inserts ("Documentation"). No claim of suitability for use in applications regulated by FDA is made. The warranty provided herein is valid only when used by properly trained individuals. Unless otherwise stated in the Documentation, this warranty is limited to one year from date of shipment when the Product is subjected to normal, proper and intended usage. This warranty does not extend to anyone other than the Buyer. Any model or sample furnished to Buyer is merely illustrative of the general type and quality of goods and does not represent that any Product will conform to such model or sample. NO OTHER WARRANTIES, EXPRESS OR IMPLIED, ARE GRANTED INCLUDING WITHOUT LIMITATION, IMPLIED WARRANTIES OF MERCHANTABILITY, FITNESS FOR ANY PARTICULAR PURPOSE, OR NON INFRINGEMENT. BUYER'S EXCLUSIVE REMEDY FOR NON-CONFORMING PRODUCTS DURING THE WARRANTY PERIOD IS LIMITED TO REPAIR, REPLACEMENT OF OR REFUND FOR THE NON-CONFORMING PRODUCT(S) AT SELLER'S SOLE OPTION. THERE IS NO OBLIGATION TO REPAIR, REPLACE OR REFUND FOR PRODUCTS AS THE RESULT OF (I) ACCIDENT, DISASTER OR EVENT OF FORCE MAJEURE, (II) MISUSE, FAULT OR NEGLIGENCE OF OR BY BUYER, (III) USE OF THE PRODUCTS IN A MANNER FOR WHICH THEY WERE NOT DESIGNED, OR (IV) IMPROPER STORAGE AND HANDLING OF THE PRODUCTS. Unless otherwise expressly stated on the Product or in the documentation accompanying the Product, the Product is intended for research only and is not to be used for any other purpose, including without limitation, unauthorized commercial uses, in vitro diagnostic uses, ex vivo or in vivo therapeutic uses, or any type of consumption by or application to human or animals.