

ERCC1 Monoclonal Antibody (3H11)

Product Details

Size	500 µL
Species Reactivity	Human
Published Species	Human
Host/Isotype	Mouse / IgG2a, kappa
Class	Monoclonal
Type	Antibody
Clone	3H11
Conjugate	Unconjugated
Immunogen	Full length recombinant human ERCC1 protein
Form	Liquid
Concentration	0.2 mg/mL
Purification	Protein A
Storage buffer	PBS, pH 7.4, with 0.2% BSA
Contains	0.09% sodium azide
Storage conditions	4° C
RRID	AB_10982462

Applications	Tested Dilution	Publications
Western Blot (WB)	1-3 µg/mL	7 Publications
Immunohistochemistry (IHC)	-	1 Publication
Immunocytochemistry (ICC/IF)	-	1 Publication
Immunoprecipitation (IP)	2 µg/mL	-

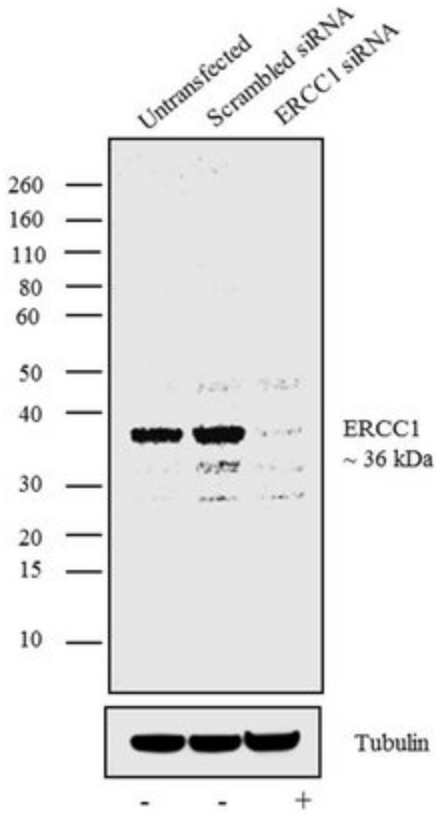
Product Specific Information

MA5-13830 targets ERCC1 in IP and WB applications and shows reactivity with Human samples.

The MA5-13830 immunogen is full length recombinant human ERCC1 protein.

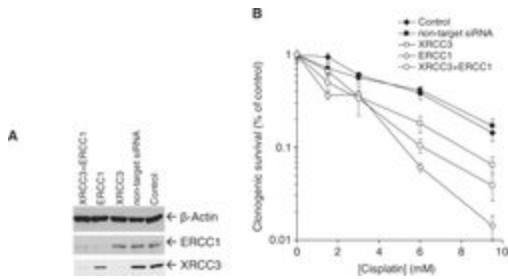
ERCC1 Antibody (MA5-13830)

Antibody specificity was demonstrated by siRNA mediated knockdown of target protein. HeLa cells were transfected with ERCC1 siRNA and decrease in signal intensity was observed in western blot application using Anti-ERCC1 Mouse Monoclonal Antibody (Product# MA513830). Knockdown validation info.

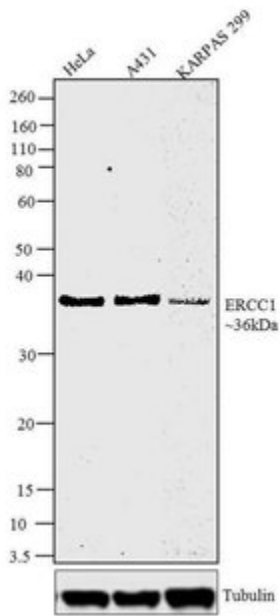


ERCC1 Antibody (MA5-13830)

Figure 9. XRCC3 acts in the same pathway as ERCC1 in ICL repair. (A) Western blot showing knockdown of ERCC1, XRCC3 or ERCC1+XRCC3 in SQ20B cells. NT, non-targeting. β -Actin was used to control for loading. (B) The effects on clonogenic survival of knocking down ERCC1, XRCC3 or ERCC1+XRCC3 in SQ20B to cisplatin treatment. NT siRNA was used as negative control. Cisplatin was added to the dishes for 2 h before changing to drug-free medium. Graph indicates average and standard deviation of three to eight experiments. Knockdown validation info.



Product Images For ERCC1 Monoclonal Antibody (3H11)



ERCC1 Antibody (MA5-13830) in WB

Western blot analysis was performed on whole cell extracts (30 μ g lysate) of HeLa (Lane 1), A431 (Lane 2) and KARPAS 299 (lane 3). The blots were probed with Anti-ERCC1 Mouse Monoclonal Antibody (Product # MA5-13830, 1-3 μ g/mL) and detected by chemiluminescence Goat anti-Mouse IgG (H+L) Secondary Antibody, HRP conjugate (Product # 62-6520, 1:4000 dilution). A 36 kDa band corresponding to ERCC1 was observed across cell lines tested. Known quantity of protein samples were electrophoresed using Novex® NuPAGE® 12 % Bis-Tris gel (Product # NP0342BOX), XCell SureLock™ Electrophoresis System (Product # EI0002) and Novex® Sharp Pre-Stained Protein Standard (Product # LC5800). Resolved proteins were then transferred onto a nitrocellulose membrane iBlot® 2 Dry Blotting System (Product # IB21001). The membrane was probed with the relevant primary and secondary Antibody following blocking with 5 % skimmed milk. Chemiluminescent detection was performed using Pierce™ ECL Western Blotting Substrate (Product # 32106).

[View more figures on thermofisher.com](https://www.thermofisher.com)

Western Blot (7)

Experimental and therapeutic medicine

Effects of taxol resistance gene 1 expression on the chemosensitivity of SGC-7901 cells to oxaliplatin.

"MA5-13830 was used in western blot to characterize chemosensitivity of SGC-7901 cells to oxaliplatin and the effects of taxol resistance gene 1 expression"

Authors: Liu L,Bai Z,Ma X,Wang T,Yang Y,Zhang Z

Species
Human

Dilution
1:500

Year
2016

Cellular and molecular life sciences : CMLS

Delayed c-Fos activation in human cells triggers XPF induction and an adaptive response to UVC-induced DNA damage and cytotoxicity.

"MA5-13830 was used in western blot to study the role of delayed c-Fos activation in the adaptive response to UVC-induced DNA damage and cytotoxicity"

Authors: Tomicic MT,Reischmann P,Rasenberger B,Meise R,Kaina B,Christmann M

Species
Human

Dilution
1:500-1:1,000

Year
2011

[View more WB references on thermofisher.com](#)

Immunohistochemistry (1)

Applied immunohistochemistry & molecular morphology : AIMM

Development of an unsupervised pixel-based clustering algorithm for compartmentalization of immunohistochemical expression using Automated QUantitative Analysis.

"MA5-13830 was used in immunohistochemistry to evaluate a novel image processing algorithm for immunohistochemical analysis"

Authors: Gustavson MD,Bourke-Martin B,Reilly DM,Cregger M,Williams C,Tedeschi G,Pinard R,Christiansen J

Species
Human

Dilution
1:1000

Year
2009

Immunocytochemistry (1)

Journal of signal transduction

The Concept of Divergent Targeting through the Activation and Inhibition of Receptors as a Novel Chemotherapeutic Strategy: Signaling Responses to Strong DNA-Reactive Combinatorial Mimicries.

"MA5-13830 was used in immunocytochemistry and western blot to study the concept of divergent targeting through the activation and inhibition of receptors as a novel chemotherapeutic strategy"

Authors: Watt HL,Rachid Z,Jean-Claude BJ

Species
Human

Dilution
Not Cited

Year
2012

More applications with references on thermofisher.com

For Research Use Only. Not for use in diagnostic procedures. Not for resale without express authorization. Products are warranted to operate or perform substantially in conformance with published Product specifications in effect at the time of sale, as set forth in the Production documentation, specifications and/or accompanying package inserts ("Documentation"). No claim of suitability for use in applications regulated by FDA is made. The warranty provided herein is valid only when used by properly trained individuals. Unless otherwise stated in the Documentation, this warranty is limited to one year from date of shipment when the Product is subjected to normal, proper and intended usage. This warranty does not extend to anyone other than the Buyer. Any model or sample furnished to Buyer is merely illustrative of the general type and quality of goods and does not represent that any Product will conform to such model or sample. NO OTHER WARRANTIES, EXPRESS OR IMPLIED, ARE GRANTED INCLUDING WITHOUT LIMITATION, IMPLIED WARRANTIES OF MERCHANTABILITY, FITNESS FOR ANY PARTICULAR PURPOSE, OR NON INFRINGEMENT. BUYER'S EXCLUSIVE REMEDY FOR NON-CONFORMING PRODUCTS DURING THE WARRANTY PERIOD IS LIMITED TO REPAIR, REPLACEMENT OF OR REFUND FOR THE NON-CONFORMING PRODUCT(S) AT SELLER'S SOLE OPTION. THERE IS NO OBLIGATION TO REPAIR, REPLACE OR REFUND FOR PRODUCTS AS THE RESULT OF (I) ACCIDENT, DISASTER OR EVENT OF FORCE MAJEURE, (II) MISUSE, FAULT OR NEGLIGENCE OF OR BY BUYER, (III) USE OF THE PRODUCTS IN A MANNER FOR WHICH THEY WERE NOT DESIGNED, OR (IV) IMPROPER STORAGE AND HANDLING OF THE PRODUCTS. Unless otherwise expressly stated on the Product or in the documentation accompanying the Product, the Product is intended for research only and is not to be used for any other purpose, including without limitation, unauthorized commercial uses, in vitro diagnostic uses, ex vivo or in vivo therapeutic uses, or any type of consumption by or application to human or animals.