

Ezrin Monoclonal Antibody (3C12)

Product Details

Size	500 µL
Species Reactivity	Bovine, Hamster, Human, Marsupial, Mouse, Non-human primate, Rat
Published Species	Dog, Rat, Human, Mouse
Host/Isotope	Mouse / IgG1
Class	Monoclonal
Type	Antibody
Clone	3C12
Conjugate	Unconjugated
Immunogen	A recombinant fragment of human ezrin corresponding to aa 362-585
Form	Liquid
Concentration	0.2 mg/mL
Purification	Protein G
Storage buffer	PBS, pH 7.4, with 0.2% BSA
Contains	0.09% sodium azide
Storage Conditions	4° C
RRID	AB_10979020

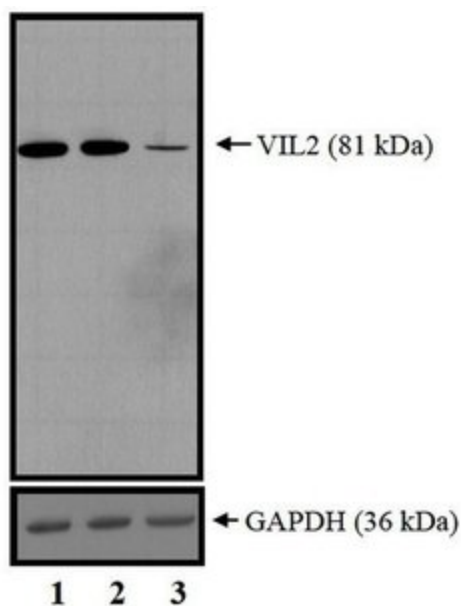
Applications	Tested Dilution	Publications
Immunocytochemistry (ICC)	1:50-1:200	5 Publications
Immunofluorescence (IF)	1:50 - 1:200	1 Publication
Immunohistochemistry (Paraffin) (IHC (P))	1-2 µg/mL	6 Publications
Immunoprecipitation (IP)	2 µg/mL	1 Publication
Western Blot (WB)	0.5-1.0 µg/mL	13 Publications
Immunohistochemistry (IHC)	-	23 Publications
Miscellaneous PubMed (Misc)	-	5 Publications

Product Specific Information

MA5-13862 targets Ezrin in IHC (P), ICC, IP, IF, and WB applications and shows reactivity with Bovine, Hamster, Human, Marsupial, mouse, Non-human primate, and Rat samples.

The MA5-13862 immunogen is a recombinant fragment of human ezrin corresponding to aa 362-585.

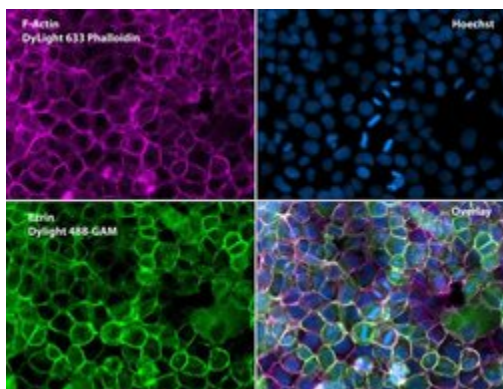
Advanced Verification Data



Ezrin Antibody (MA5-13862)

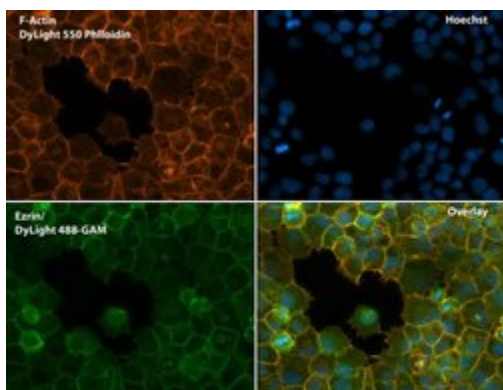
The specificity of anti-Ezrin monoclonal antibody (Product # MA5-13862) was demonstrated by siRNA knockdown. Western blot analysis of HeLa cell extracts using this antibody showed decreased level of Ezrin protein expression in cells transfected with Ezrin (VIL-2) specific siRNA (lane 3) but not in controls (lane 1 and 2). Knockdown validation info.

Product Images For Ezrin Monoclonal Antibody (3C12)



Ezrin Antibody (MA5-13862) in IF

Immunofluorescent analysis of Phalloidin (magenta) and Ezrin (green) in A431 cells. Formalin fixed cells were permeabilized with 0.1% Triton X-100 in PBS for 10 minutes at room temperature and blocked with 2% BSA (Product # 37525) in PBS + 0.1% Triton X-100 for 30 minutes at room temperature. Cells were probed with an Ezrin monoclonal antibody (Product # MA5-13862) at a dilution of 1:75 for at least 1 hour at room temperature, washed with PBS, and incubated with DyLight 488 goat anti-mouse IgG secondary antibody (Product # 35502) at a dilution of 1:250 for 30 minutes at room temperature. Actin was stained with DyLight 633 Phalloidin (Product # 21840) at a dilution of 1:120 (2.5units/mL final concentration) and nuclei (blue) were stained with Hoechst (Product # 62249) at a concentration of 1 µg/mL for 30 minutes. Images were taken on a Zeiss Axio Observer Z1 microscope at 20X magnification.



Ezrin Antibody (MA5-13862) in IF

Immunofluorescent analysis of Phalloidin (orange) and Ezrin (green) in A431 cells. Formalin fixed cells were permeabilized with 0.1% Triton X-100 in PBS for 10 minutes at room temperature and blocked with 2% BSA (Product # 37525) in PBS + 0.1% Triton X-100 for 30 minutes at room temperature. Cells were probed with an Ezrin monoclonal antibody (Product # MA5-13862) at a dilution of 1:75 for at least 1 hour at room temperature, washed with PBS, and incubated with DyLight 488 goat anti-mouse IgG secondary antibody (Product # 35502) at a dilution of 1:250 for 30 minutes at room temperature. Actin was stained with DyLight 550 Phalloidin (Product # 21835) at a dilution of 1:120 (2.5 units/mL final concentration) and nuclei (blue) were stained with Hoechst (Product # 62249) at a concentration of 1 µg/mL for 30 minutes. Images were taken on a Zeiss Axio Observer Z1 microscope at 20X magnification.

View more figures on thermofisher.com

54 References

Immunocytochemistry (5)

FEBS open bio

Suppressor of IKKepsilon forms direct interactions with cytoskeletal proteins, tubulin and -actinin, linking innate immunity to the cytoskeleton.

"MA5-13862 was used in Immunocytochemistry-immunofluorescence to study the functions of suppressor of IKKepsilon.

"

Authors: Sonnenschein HA, Lawrence KF, Wittenberg KA, Slykas FA, Dohleman EL, Knoublauch JB, Fahey SM, Marshall TM, Marion JD, Bell JK

Species
Human

Dilution
Not Cited

Year
2018

Journal of cell science

Activated ezrin controls MISP levels to ensure correct NuMA polarization and spindle orientation.

"MA5-13862 was used in Western Blotting to study how appropriate MISP levels at the cortex are required for proper NuMA polarisation and, therefore, an optimal placement of the mitotic spindle within the cell."

Authors: Kschonsak YT, Hoffmann I

Species
Human

Dilution
1:1,000

Year
2018

[View more ICC references on thermofisher.com](#)

Immunofluorescence (1)

FEBS open bio

Suppressor of IKKepsilon forms direct interactions with cytoskeletal proteins, tubulin and -actinin, linking innate immunity to the cytoskeleton.

"MA5-13862 was used in Immunocytochemistry-immunofluorescence to study the functions of suppressor of IKKepsilon.

"

Authors: Sonnenschein HA, Lawrence KF, Wittenberg KA, Slykas FA, Dohleman EL, Knoublauch JB, Fahey SM, Marshall TM, Marion JD, Bell JK

Species
Human

Dilution
Not Cited

Year
2018

Miscellaneous PubMed (5)

Translational oncology

Distinct Ezrin Truncations Differentiate Metastases in Sentinel Lymph Nodes from Unaffected Lymph Node Tissues, from Primary Breast Tumors, and from Healthy Glandular Breast Tissues.

"MA5-13862 was used in Western Blotting to investigate the expression and truncation of ezrin in sentinel lymph node metastases, unaffected axillary lymph nodes, primary breast tumours, and healthy glandular breast tissues."

Authors: Röwer C, George C, Reimer T, Stengel B, Radtke A, Gerber B, Glocker MO

Species
Human

Dilution
Not Cited

Year
2018

[View more Misc references on thermofisher.com](#)

More applications with references on thermofisher.com

IHC (P) (6)

WB (13)

IHC (23)

IP (1)

For Research Use Only. Not for use in diagnostic procedures. Not for resale without express authorization. Products are warranted to operate or perform substantially in conformance with published Product specifications in effect at the time of sale, as set forth in the Production documentation, specifications and/or accompanying package inserts ("Documentation"). No claim of suitability for use in applications regulated by FDA is made. The warranty provided herein is valid only when used by properly trained individuals. Unless otherwise stated in the Documentation, this warranty is limited to one year from date of shipment when the Product is subjected to normal, proper and intended usage. This warranty does not extend to anyone other than the Buyer. Any model or sample furnished to Buyer is merely illustrative of the general type and quality of goods and does not represent that any Product will conform to such model or sample. NO OTHER WARRANTIES, EXPRESS OR IMPLIED, ARE GRANTED INCLUDING WITHOUT LIMITATION, IMPLIED WARRANTIES OF MERCHANTABILITY, FITNESS FOR ANY PARTICULAR PURPOSE, OR NON-INFRINGEMENT. BUYER'S EXCLUSIVE REMEDY FOR NON-CONFORMING PRODUCTS DURING THE WARRANTY PERIOD IS LIMITED TO REPAIR, REPLACEMENT OF OR REFUND FOR THE NON-CONFORMING PRODUCT(S) AT SELLER'S SOLE OPTION. THERE IS NO OBLIGATION TO REPAIR, REPLACE OR REFUND FOR PRODUCTS AS THE RESULT OF (I) ACCIDENT, DISASTER OR EVENT OF FORCE MAJEURE, (II) MISUSE, FAULT OR NEGLIGENCE OF OR BY BUYER, (III) USE OF THE PRODUCTS IN A MANNER FOR WHICH THEY WERE NOT DESIGNED, OR (IV) IMPROPER STORAGE AND HANDLING OF THE PRODUCTS. Unless otherwise expressly stated on the Product or in the documentation accompanying the Product, the Product is intended for research only and is not to be used for any other purpose, including without limitation, unauthorized commercial uses, in vitro diagnostic uses, ex vivo or in vivo therapeutic uses, or any type of consumption by or application to human or animals.