

Cytokeratin 8/18 Monoclonal Antibody (5D3)

Product Details	
Size	500 µL
Species Reactivity	Human
Published Species	Human
Host/Isotype	Mouse / IgG1
Class	Monoclonal
Type	Antibody
Clone	5D3
Conjugate	Unconjugated
Immunogen	Cytokeratins purified from breast cancer MCF-7 cells
Form	Liquid
Concentration	Conc. Not Determined
Storage buffer	tissue culture supernatant
Contains	0.09% sodium azide
Storage conditions	4° C
RRID	AB_10984885

Applications	Tested Dilution	Publications
Immunohistochemistry (IHC)	-	12 Publications
Immunohistochemistry (Paraffin) (IHC (P))	1:50-1:100	2 Publications
Immunocytochemistry (ICC/IF)	1:250	3 Publications

Product Specific Information

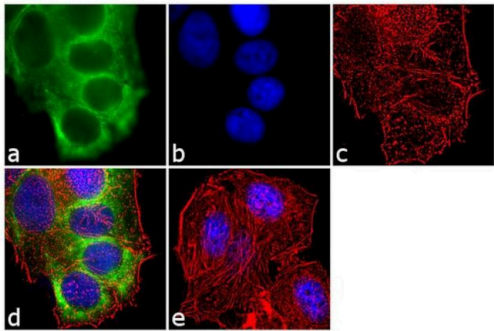
MA5-14088 targets Cytokeratin 8/18 in immunohistochemistry (paraffin) applications and shows reactivity with Human samples.

The MA5-14088 immunogen is cytokeratins purified from breast cancer MCF-7 cells.

Product Images For Cytokeratin 8/18 Monoclonal Antibody (5D3)

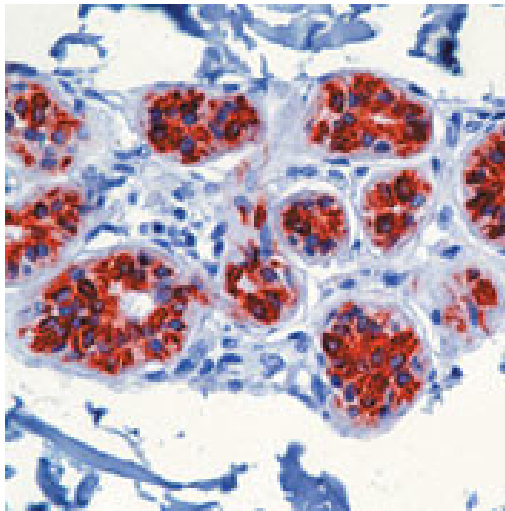
Cytokeratin 8/18 Antibody (MA5-14088) in ICC/IF

Immunofluorescent analysis of Cytokeratin 8, 18 was performed using 70% confluent log phase MCF-7 cells. The cells were fixed with 4% paraformaldehyde for 10 minutes, permeabilized with 0.1% Triton™ X-100 for 10 minutes, and blocked with 1% BSA for 1 hour at room temperature. The cells were labeled with Cytokeratin 8, 18 (5D3) Mouse Monoclonal Antibody (Product # MA5-14088) at 1:250 dilution in 0.1% BSA and incubated for 3 hours at room temperature and then labeled with Goat anti-Mouse IgG (H+L) Superclonal™ Secondary Antibody, Alexa Fluor® 488 conjugate (Product # A28175) a dilution of 1:2000 for 45 minutes at room temperature (Panel a: green). Nuclei (Panel b: blue) were stained with SlowFade® Gold Antifade Mountant with DAPI (Product # S36938). F-actin (Panel c: red) was stained with Rhodamine Phalloidin (Product # R415, 1:300). Panel d represents the merged image showing cytoplasmic localization. Panel e shows the no primary antibody control. The images were captured at 60X magnification.



Cytokeratin 8/18 Antibody (MA5-14088) in IHC (P)

Formalin-fixed, paraffin-embedded human skin stained with Keratin 8/18 antibody using peroxidase-conjugate and AEC chromogen. Note cytoplasmic staining of epithelial cells in the sweat glands.



Immunohistochemistry (12)

<p>International journal of molecular sciences</p> <p>Urinary Tract Tumor Organoids Reveal Eminent Differences in Drug Sensitivities When Compared to 2-Dimensional Culture Systems.</p> <p>"MA5-14088 was used in Immunohistochemistry to conclude that organoids maintained inter-individual sensitivities towards venetoclax, S63845, and cisplatin."</p> <p>Authors: Wei Y,Amend B,Todenhöfer T,Lipke N,Aicher WK,Fend F,Stenzl A,Harland N</p>	<p>Year 2022</p> <p>Species Human</p>
<p>Histopathology</p> <p>A reference image-based method for optimization of clinical immunohistochemistry.</p> <p>"MA5-14088 was used in immunohistochemistry to describe a new method for immunohistochemistry optimization"</p> <p>Authors: Kap M,Lam KH,Ewing-Graham P,Riegman P</p>	<p>Year 2015</p> <p>Species Human</p> <p>Dilution 1:100</p>

View more IHC references on thermofisher.com

Immunohistochemistry (Paraffin) (2)

<p>Applied immunohistochemistry & molecular morphology : AIMM</p> <p>A 2-Step Laemmli and Antigen Retrieval Method Improves Immunodetection.</p> <p>"MA514088 was used in immunohistochemistry - paraffin section to develop an "antigen relaxing" method to improve routine detection of scarce antigens in formalin-fixed, paraffin-embedded material"</p> <p>Authors: Scalia CR,Gendusa R,Cattoretto G</p>	<p>Year 2016</p> <p>Species Human</p> <p>Dilution 1:100</p>
<p>PloS one</p> <p>Histological assessment of PAXgene tissue fixation and stabilization reagents.</p> <p>"MA5-14088 was used in immunohistochemistry - paraffin section to examine the suitability of PAXgene tissue fixation for (immuno)histological methods"</p> <p>Authors: Kap M,Smedts F,Oosterhuis W,Winther R,Christensen N,Reischauer B,Viertler C,Groelz D,Becker KF, Zatloukal K,Langer R,Slotta-Huspenina J,Bodo K,de Jong B,Oelmüller U,Riegman P</p>	<p>Year 2012</p> <p>Dilution 1:100</p>

More applications with references on thermofisher.com

ICC/IF (3)

For Research Use Only. Not for use in diagnostic procedures. Not for resale without express authorization. Products are warranted to operate or perform substantially in conformance with published Product specifications in effect at the time of sale, as set forth in the Production documentation, specifications and/or accompanying package inserts ("Documentation"). No claim of suitability for use in applications regulated by FDA is made. The warranty provided herein is valid only when used by properly trained individuals. Unless otherwise stated in the Documentation, this warranty is limited to one year from date of shipment when the Product is subjected to normal, proper and intended usage. This warranty does not extend to anyone other than the Buyer. Any model or sample furnished to Buyer is merely illustrative of the general type and quality of goods and does not represent that any Product will conform to such model or sample. NO OTHER WARRANTIES, EXPRESS OR IMPLIED, ARE GRANTED INCLUDING WITHOUT LIMITATION, IMPLIED WARRANTIES OF MERCHANTABILITY, FITNESS FOR ANY PARTICULAR PURPOSE, OR NON INFRINGEMENT. BUYER'S EXCLUSIVE REMEDY FOR NON-CONFORMING PRODUCTS DURING THE WARRANTY PERIOD IS LIMITED TO REPAIR, REPLACEMENT OF OR REFUND FOR THE NON-CONFORMING PRODUCT(S) AT SELLER'S SOLE OPTION. THERE IS NO OBLIGATION TO REPAIR, REPLACE OR REFUND FOR PRODUCTS AS THE RESULT OF (I) ACCIDENT, DISASTER OR EVENT OF FORCE MAJEURE, (II) MISUSE, FAULT OR NEGLIGENCE OF OR BY BUYER, (III) USE OF THE PRODUCTS IN A MANNER FOR WHICH THEY WERE NOT DESIGNED, OR (IV) IMPROPER STORAGE AND HANDLING OF THE PRODUCTS. Unless otherwise expressly stated on the Product or in the documentation accompanying the Product, the Product is intended for research only and is not to be used for any other purpose, including without limitation, unauthorized commercial uses, in vitro diagnostic uses, ex vivo or in vivo therapeutic uses, or any type of consumption by or application to human or animals.