

Cyclin B1 Monoclonal Antibody (GNS1)

Product Details	
Size	500 µL
Species	Hamster, Human, Mouse
Published Species	Bovine, Human, Mouse
Expression System	Mouse / IgG1
Class	Monoclonal
Type	Antibody
Clone	GNS1
Conjugate	Unconjugated
Immunogen	Human cyclin B1 protein
Form	Liquid
Concentration	0.2 mg/mL
Purification	Protein G
Storage buffer	PBS, pH 7.4, with 0.2% BSA
Contains	0.09% sodium azide
Storage Conditions	4° C
RRID	AB_10987286

Applications	Tested Dilution	Publications
Flow Cytometry (Flow)	Assay Dependent	-
Immunofluorescence (IF)	Assay Dependent	-
Immunoprecipitation (IP)	2 µg/mL	3 Publications
Western Blot (WB)	1-2 µg/mL	14 Publications
Immunocytochemistry (ICC)	-	3 Publications

Product Specific Information

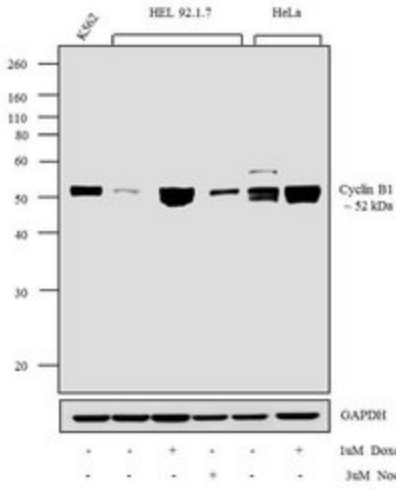
MA5-14319 targets Cyclin B1 in FACS, IF, IP, and WB applications and shows reactivity with Hamster, Human, and mouse samples.

The MA5-14319 immunogen is human cyclin B1 protein.

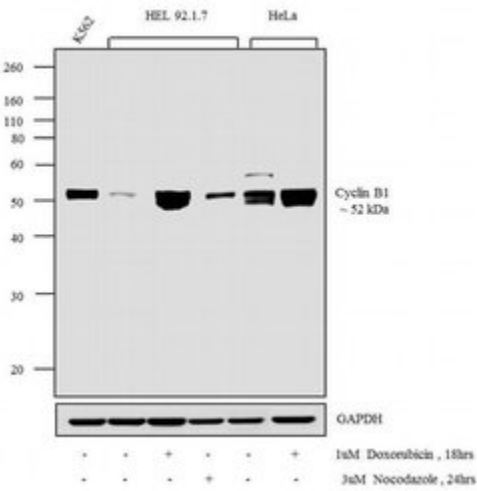
Advanced Verification Data

Cyclin B1 Antibody (MA5-14319)

Altered expression of proteins upon cell treatment demonstrates antibody specificity. Western blot of Cyclin B1 using Cyclin B1 Mouse Monoclonal Antibody (Product # MA5-14319) shows increased expression of Cyclin B1 in HeL 92.1.7 and HeLa upon doxorubicin and/or nocodazole treatment. Cell treatment validation info.



Product Images For Cyclin B1 Monoclonal Antibody (GNS1)

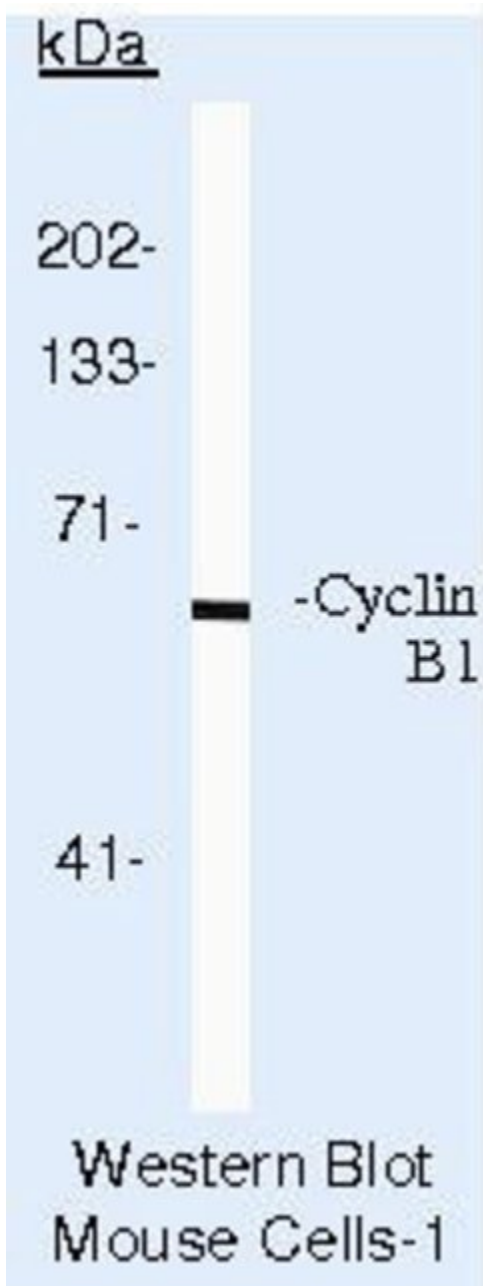


Cyclin B1 Antibody (MA5-14319) in WB

Western blot analysis was performed on whole cell extracts (30 µg lysate) of K562 (Lane 1), HEL 92.1.7 (Lane 2), HEL 92.1.7 treated with 1uM doxorubicin for 18 hour (Lane 3), HEL 92.1.7 treated with 3uM nocodazole for 24 hours (Lane 4), HeLa (Lane 5), HeLa treated with 1uM doxorubicin for 18 hour (Lane 6). The blots were probed with Anti-Cyclin B1 Mouse Monoclonal Antibody (Product # MA5-14319, 1-2 µg/mL) and detected by chemiluminescence using Goat anti-Mouse IgG (H+L) Secondary Antibody, HRP conjugate (Product # 62-6520, 1:4000 dilution). A 52 kDa band corresponding to Cyclin B1 was observed across cell lines tested. Known quantity of protein samples were electrophoresed using Novex® NuPAGE® 12 % Bis-Tris gel (Product # NP0342BOX), XCell SureLock™ Electrophoresis System (Product # EI0002) and Novex® Sharp Pre-Stained Protein Standard (Product # LC5800). Resolved proteins were then transferred onto a nitrocellulose membrane with iBlot® 2 Dry Blotting System (Product # IB21001). The membrane was probed with the relevant primary and secondary Antibody following blocking with 5 % skimmed milk. Chemiluminescent detection was performed using Pierce™ ECL Western Blotting Substrate (Product # 32106).

Cyclin B1 Antibody (MA5-14319) in WB

Western blot of Cyclin B1 using Cyclin B1 Monoclonal Antibody (Product # MA5-14319) on MAD109 Cells.



[View more figures on thermofisher.com](#)

20 References

Western Blot (14)

Proceedings of the National Academy of Sciences of the United States of America

Mechanism of APC/CCDC20 activation by mitotic phosphorylation.

"MA5-14319 was used in western blot to study the mechanism responsible for the activation of mitotic phosphorylation by APC/CCDC20"

Authors: Qiao R, Weissmann F, Yamaguchi M, Brown NG, VanderLinden R, Imre R, Jarvis MA, Brunner MR, Davidson IF, Litos G, Haselbach D, Mechtler K, Stark H, Schulman BA, Peters JM

Species
Not Applicable

Dilution
1:1000

Year
2016

The Journal of biological chemistry

Degradation of the Separase-cleaved Rec8, a Meiotic Cohesin Subunit, by the N-end Rule Pathway.

"MA5-14319 was used in western blot to determine how the N-end rule pathway degrades separase-cleaved Rec8, a meiotic cohesion subunit"

Authors: Liu YJ, Liu C, Chang Z, Wadas B, Brower CS, Song ZH, Xu ZL, Shang YL, Liu WX, Wang LN, Dong W, Varshavsky A, Hu RG, Li W

Species
Not Applicable

Dilution
Not Cited

Year
2016

[View more WB references on thermofisher.com](#)

Immunoprecipitation (3)

The Journal of biological chemistry

Repression of cyclin D1 expression is necessary for the maintenance of cell cycle exit in adult mammalian cardiomyocytes.

"MA5-14319 was used in immunoprecipitation to study the role of cyclin D1 in adult mammalian cardiomyocyte cell cycle exit"

Authors: Tane S, Kubota M, Okayama H, Ikenishi A, Yoshitome S, Iwamoto N, Satoh Y, Kusakabe A, Ogawa S, Kanai A, Molkenin JD, Nakamura K, Ohbayashi T, Takeuchi T

Species
Mouse

Dilution
Not Cited

Year
2014

Development, growth and differentiation

Cell cycle regulation in mouse heart during embryonic and postnatal stages.

"MA5-14319 was used in immunoprecipitation to study the molecular biology of cell cycle regulation in embryonic and post-natal murine heart"

Authors: Ikenishi A, Okayama H, Iwamoto N, Yoshitome S, Tane S, Nakamura K, Obayashi T, Hayashi T, Takeuchi T

Species
Mouse

Dilution
Not Cited

Year
2012

[View more IP references on thermofisher.com](#)

More applications with references on thermofisher.com

ICC (3)

For Research Use Only. Not for use in diagnostic procedures. Not for resale without express authorization. Products are warranted to operate or perform substantially in conformance with published Product specifications in effect at the time of sale, as set forth in the Production documentation, specifications and/or accompanying package inserts ("Documentation"). No claim of suitability for use in applications regulated by FDA is made. The warranty provided herein is valid only when used by properly trained individuals. Unless otherwise stated in the Documentation, this warranty is limited to one year from date of shipment when the Product is subjected to normal, proper and intended usage. This warranty does not extend to anyone other than the Buyer. Any model or sample furnished to Buyer is merely illustrative of the general type and quality of goods and does not represent that any Product will conform to such model or sample. NO OTHER WARRANTIES, EXPRESS OR IMPLIED, ARE GRANTED INCLUDING WITHOUT LIMITATION, IMPLIED WARRANTIES OF MERCHANTABILITY, FITNESS FOR ANY PARTICULAR PURPOSE, OR NON INFRINGEMENT. BUYER'S EXCLUSIVE REMEDY FOR NON-CONFORMING PRODUCTS DURING THE WARRANTY PERIOD IS LIMITED TO REPAIR, REPLACEMENT OF OR REFUND FOR THE NON-CONFORMING PRODUCT(S) AT SELLER'S SOLE OPTION. THERE IS NO OBLIGATION TO REPAIR, REPLACE OR REFUND FOR PRODUCTS AS THE RESULT OF (I) ACCIDENT, DISASTER OR EVENT OF FORCE MAJEURE, (II) MISUSE, FAULT OR NEGLIGENCE OF OR BY BUYER, (III) USE OF THE PRODUCTS IN A MANNER FOR WHICH THEY WERE NOT DESIGNED, OR (IV) IMPROPER STORAGE AND HANDLING OF THE PRODUCTS. Unless otherwise expressly stated on the Product or in the documentation accompanying the Product, the Product is intended for research only and is not to be used for any other purpose, including without limitation, unauthorized commercial uses, in vitro diagnostic uses, ex vivo or in vivo therapeutic uses, or any type of consumption by or application to human or animals.